



# Local Policy Maker Group (LPMG) Role / Structure

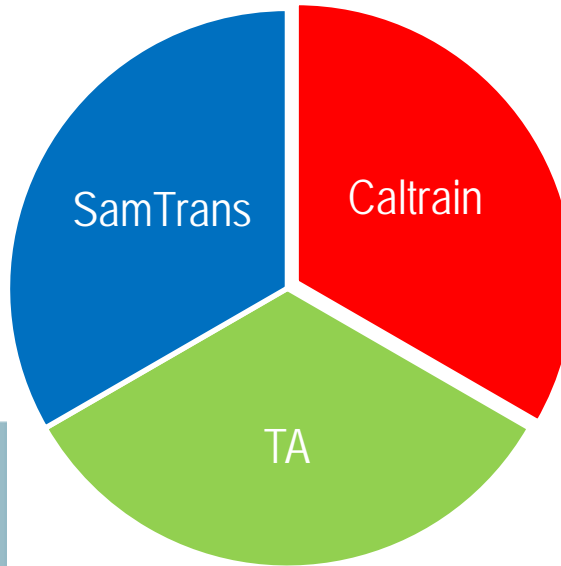
LPMG

April 28 , 2016

# Context

# San Mateo County Transit District

- SamTrans
- San Mateo County Transportation Authority (TA)
- Caltrain



# Caltrain

- Peninsula Corridor Joint Powers Board (JPB)
  - Three counties represented
  - 9 board members (3 from each county)
- Citizens Advisory Committee (JPB CAC)
  - Selected by the JPB (3 from each county)
  - Informs JPB directly
- Bicycle Advisory Committee (JPB BAC)
  - Selected by the Staff Coordinating Council (3 from each county)
  - Informs JPB and CAC through staff



City/County San Francisco



San Mateo County Transit  
District

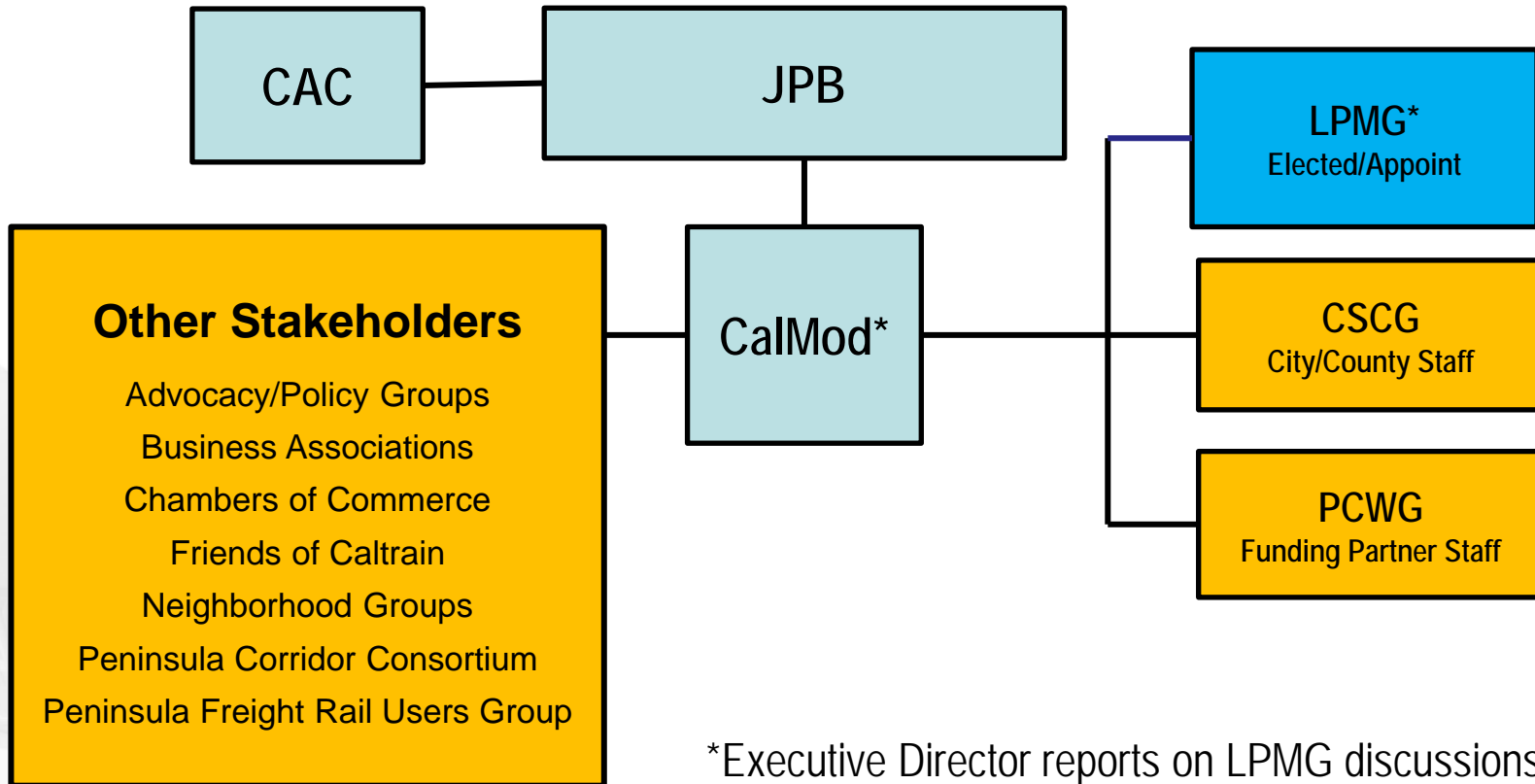


Santa Clara Valley  
Transportation Authority

# LPMG Scope

- Caltrain Modernization Program
  - Advanced Signal System (2016)
  - Corridor Electrification and Electric Trains (2020)
- HSR/Caltrain Blended System Program (2025/2029)

# Local Input



\*Executive Director reports on LPMG discussions to JPB monthly

# LPMG: 20 Members + Chair

CalMod Local Policy Maker Group (LPMG) Members

City / County	Representative	Alternate
<b>Atherton</b>	Councilmember Cary Wiest	Councilmember Rick DeGolia
<b>Belmont</b>	Mayor Eric Reed	Councilmember Charles Stone
<b>Brisbane</b>	Mayor Clifford Lentz	
<b>Burlingame</b>	Councilmember Emily Beach	Councilmember Ricardo Ortiz
<b>Menlo Park</b>	Mayor Rich Cline	Vice Mayor Kirsten Keith
<b>Millbrae</b>	Councilmember Wayne Lee	Councilmember Reuben Holofer
<b>Mountain View</b>	Councilmember Lenny Segel	Councilmember Chris Clark
<b>Palo Alto</b>	Mayor Pat Burt	Councilmember Eric Filseth
<b>Redwood City</b>	Councilmember Shelly Masur	Councilmember Janet Borgens
<b>San Bruno</b>	Councilmember Ken Ibarra	
<b>San Carlos</b>	Councilmember Ron Collins	Councilmember Mark Olbert
<b>San Francisco BOS</b>	TBD	
<b>San Francisco</b>	Gillian Gillett	Susan Gygi
<b>San Jose</b>	Councilmember Raul Peralez	
<b>San Mateo Co. BOS</b>	TBD	
<b>San Mateo</b>	Mayor Joe Goethals	Councilmember Maureen Freschet
<b>Santa Clara Co. BOS</b>	TBD	
<b>Santa Clara</b>	Vice Mayor Teresa O'Neill	Mayor Lisa Gillmor
<b>South San Francisco</b>	Councilmember Karyl Matsumoto	Councilmember Rich Garbarino
<b>Sunnyvale</b>	Councilmember Jim Davis	
<b>CHAIR (JPB Rep): Adrienne Tissier</b>		

4/27/2016

## LPMG Context

- SMC Corridor Rail Working Group request to create regular venue city dialogue / participation
- 2012, LPMG formed (CSCG support)
  - Provide local perspective and input to CalMod Program
- 2014, discussed LPMG structure / role
- 2016, alternate presentations w/ CHSRA



# LPMG Meetings

- Public bi-monthly meeting
  - Follow Brown Act
  - Chair: JPB Member
  - Staff: CalMod Team
- Electronic updates on non-meeting months
- Agenda
  - Driven by CalMod milestones
  - Items requested by members
  - Sent out before the meeting

# Discussion