

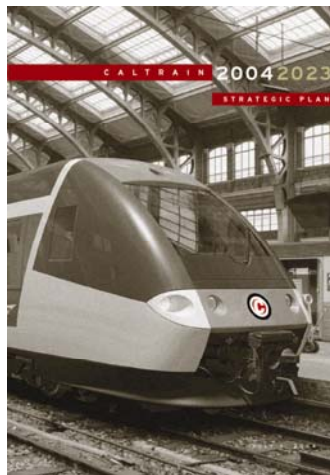


Caltrain Strategic Plan Update

LPMG
November 20, 2013



20-year Strategic Plan (2004)



Vision Statement (2004)

To become the preferred mode of travel along the Peninsula Corridor by:

- Providing passengers with a world-class travel experience
- Acting as a major catalyst for redevelopment and economic activity in communities along its route
- Playing a key role in mobility management along the Peninsula Corridor and in the Bay Area region as a whole

3

Guiding Principles (2004)

1. Satisfy passengers and build ridership
2. Invest wisely in system improvements
3. Promote regional connectivity and cooperation with other transportation providers
4. Partner with communities and broaden communications with the public
5. Develop a solid financial foundation that ensures long-term sustainability

4

Context (2004)

- 28,000 average weekday riders
- Major Events
 - Millbrae station opening
 - Baby Bullet service
- Key Opportunities Ahead
 - Caltrain Electrification
 - Regional Intermodal Network
 - High-speed Rail Connection

5

Context continued

- Funding Challenges
 - Structural deficit
 - No dedicated funding source
 - Limited capital funding
- Investment Scenarios
 - Status Quo to Moderate
 - Enhanced to Build Out
- Future Scenario Link to Funding

6

Strategic Plan Update

7

Today

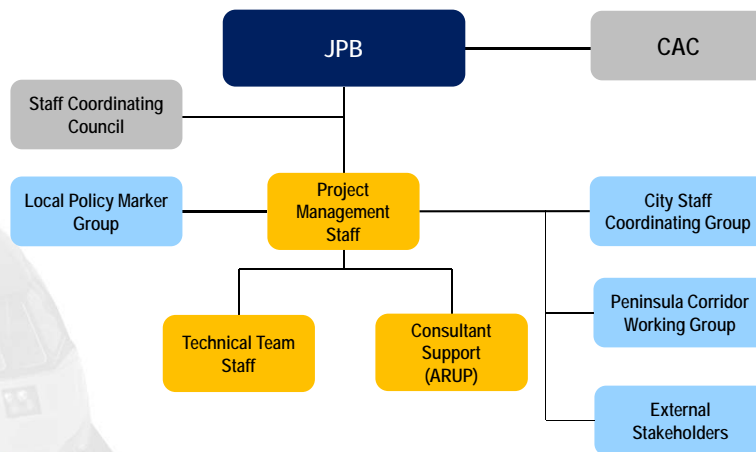
- 50,000 average weekday riders
- Key Events
 - San Bruno Grade Separation
 - \$1.5 billion Caltrain Modernization Program
- Commitment to Blended System
- Funding Challenges

8

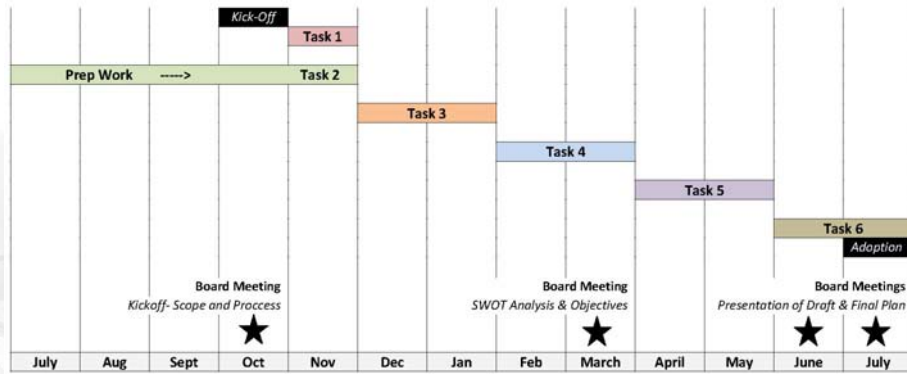
Purpose

- 10-year Outlook
- Key Questions to Address:
 - What do we want to become? (Task 1)
 - How are we doing? (Task 2)
 - What's ahead of us? (Task 3)
 - What do we need to do? (Task 4)
 - How are we going to do it? (Task 5)
- Existing Commitments
 - Caltrain Modernization Program
 - Blended System

Project Organization



Schedule



Q & A