

## Safety Highlights

The Caltrain Holiday Train runs annually and the audiences get bigger every year. Safety is a priority to safeguard the enthusiastic onlookers, especially since so many children look forward to seeing the decorated holiday train and holiday show.



Ambassadors, Transit Police, Train Crew, and a Safety Officer collaboratively established and followed best practices to provide protection behind the scene so onlookers could enjoy the holiday show safely.



The Safety and Security Department and the Transit Police worked closely together to ensure the event was safe for participants and audiences. Barriers established a boundary to allow good line of sight and helped keep persons out of harm's way. This way, everyone went home safely after the show at each designated station the Holiday Train stopped.





## Monthly Safety and Security Report December 2016

### Education

| Rail Safety Presentations/Activities | City       | Attendees |
|--------------------------------------|------------|-----------|
| Crisis Text Line Partnership Launch  | San Carlos | 75        |

### Enforcement

| Event  | DEC<br>2016 | YTD<br>2016 | DEC<br>2015 | YTD<br>2015 |
|--|-------------|-------------|-------------|-------------|
| Felony and Misdemeanor Arrests (all)                   | 9           | 209         | 17          | 200         |
| Parking Citations                                      | 357         | 4053        | 398         | 3696        |
| Traffic Citations                                      | 16          | 573         | 98          | 557         |
| All Other Infraction Citations (including trespassing) | 25          | 956         | 121         | 931         |
| Ejections/Contacts: Train, Station, Right of Way       | 23          | 268         | 14          | 245         |
| Proof-of-Payment Citations                             | 51          | 834         | 91          | 783         |
| Crisis Interventions w/ Emergency Commitments          | 1           | 32          | 2           | 31          |
| Total Calls For Police Service                         | 797         | 9734        | 724         | 8937        |

### **Significant Events**

Dec. 1 – Dec. 31: During this period, the Transit Police conducted monthly High-Intensity Strategic Enforcement Program (HISEP) initiatives targeting education and enforcement in locations where persons may engage in unsafe behavior.

- The Transit Police responded to two reports of persons trespassing on the Caltrain right-of-way. In each instance, the persons were cited and released.
- The Transit Police cited 17 persons for safety violations as part of the HISEP effort.

Dec. 1 - Dec. 31: The Transit Police responded to one report of an intoxicated person at the Menlo Park Caltrain Station. The person was arrested and booked into county jail.

Dec. 1 - Dec. 31: The Transit Police conducted routine security checks at various Caltrain stations. As a result, six persons were arrested on outstanding misdemeanor warrants and one person was arrested on an outstanding felony warrant. In each instance, the person was booked into county jail.

Dec. 1 - Dec. 31: Transit Police received four reports of vehicle burglaries and two reports of vehicle vandalism at various Caltrain Stations.



## Monthly Safety and Security Report December 2016

***The Transit Police would like to remind Caltrain patrons to keep your vehicle doors locked and not leave anything of value visible inside the vehicle.***

Dec. 18: The Transit Police responded to the Chestnut Avenue grade crossing in Redwood City on a report of an adult male trespasser who had been struck by a southbound Caltrain train. Preliminary information suggests the person may have intentionally placed himself in the path of the oncoming train. The incident is under investigation by Transit Police.

Dec. 19: The Transit Police responded to the Burlingame Caltrain Station on a report of a suicidal adult male. The person was located, taken into protective custody and transported to emergency psychiatric care.

Dec. 23: The Transit Police responded to the Charleston Avenue grade crossing in Palo Alto on a report of an adult male trespasser who had been struck by a northbound Caltrain train. Preliminary information suggests the person may have intentionally placed himself in the path of the oncoming train. The incident is under investigation by Transit Police.

Dec. 27: The Transit Police responded to the Caltrain right of way in Burlingame on a report of an adult male trespasser who had been struck by a northbound Caltrain train. Preliminary information suggests the person may have intentionally placed himself in the path of the oncoming train. The incident is under investigation by Transit Police.

### **Bike Thefts:**

Dec. 1 - Dec. 31: The Transit Police received seven reports of bicycle thefts from various Caltrain stations. The largest number of thefts (three) occurred at the San Francisco Caltrain Station.

## Engineering

### Maintenance of Way

The rainstorms of December 2016 disrupted many of TASI's planned track maintenance activities. TASI continued to provide a safe and efficient Infrastructure for our customers.

- Surfaced 8,447 Lineal Feet of main line track and installed 35 Tons of new ballast
- Installed 33 9' Wooden Cross Ties in South San Francisco Yard & 8 Switch Ties along the corridor



## Monthly Safety and Security Report December 2016

- One of our “users” of the San Jose Diridon Station tracks left a ‘gravel surprise’ for our crews, TASI did a nice job in removing the gravel



*Before*



*After*

- Cut a new access road adjacent to Main Track 1 North of Tamien Station to access Control Point Mack Signal House



*Before*



*After*

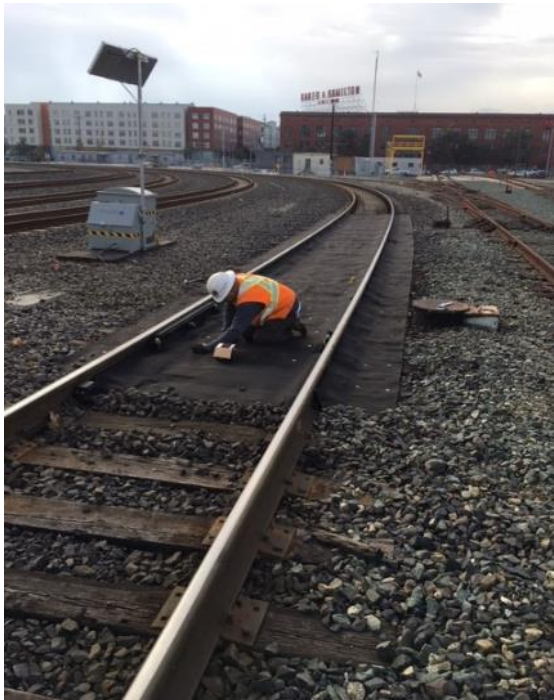


## Monthly Safety and Security Report December 2016

- Installed new Welded Wire Fence on both sides of the Cordilleras Creek in San Carlos. The fence restricts access to the 115 year old Concrete Circular Arch that spans between El Camino Real and Old County Road. A few persons had taken up “residency” underneath the structure, the fencing and recent rains discouraged this being a livable location.



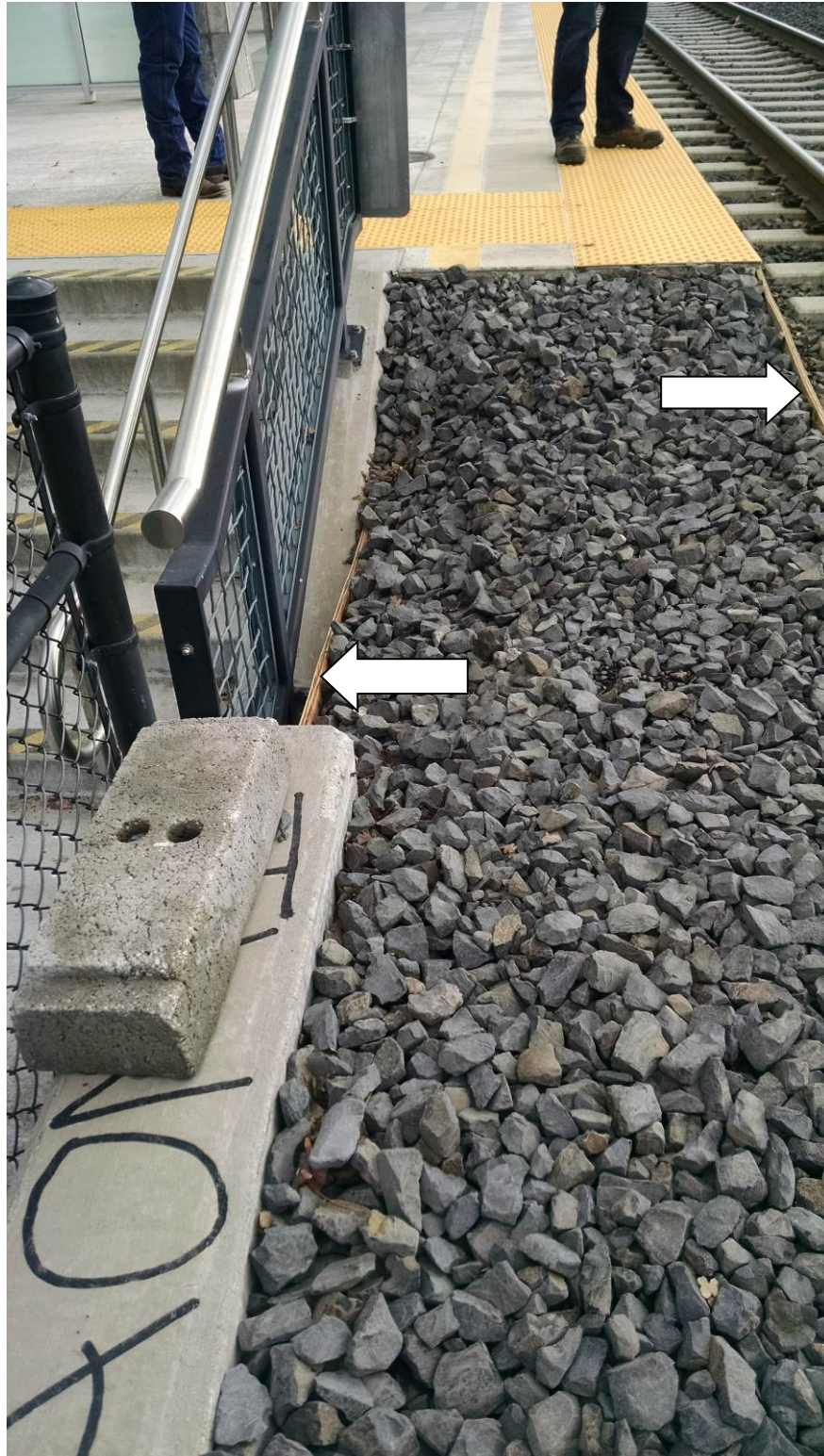
- New Rail Lubricator installed at Control Point 4<sup>th</sup> Street in San Francisco Terminal





## Monthly Safety and Security Report December 2016

- Per a California Public Utilities Commission request, ballast walkways at an 8-to-1 slope were reinstalled at the end of station platforms after removal several years ago; ½” plywood helps to keep the ballast in place on both sides, this location is at Lawrence Station in Sunnyvale.



# Monthly Safety and Security Report December 2016

## Stations

- Training focused on the following areas:
  - Engineers Design Intent
  - Painting Systems Oil based
  - Accessible Pathways
  - Signature work
  
- New Heating Ventilation Air Conditioning (HVAC) Controls were installed at Menlo Park & San Jose Diridon, these thermostats bring our buildings up to Title 24 energy compliance and provides users a “dashboard of information” regarding HVAC operation times and displays ways to save on energy costs.

