



25th Avenue Grade Separation Project

Storm Drain Installation
June 19, 2018

Meeting Agenda

- 25th Avenue Grade Separation Project Overview (PowerPoint)
- Storm Drain Work Details (Project Boards)
- Site Visit (Tour Area of Work)

Project Overview



- 92 Caltrain trains each weekday use the 25th Avenue crossing, in addition to freight
- Lack of grade separation increases delays along corridor

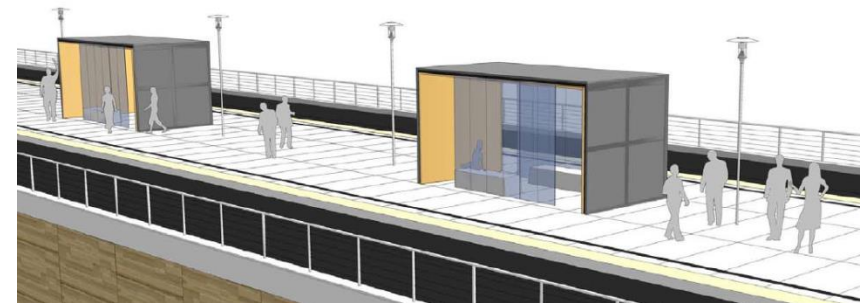
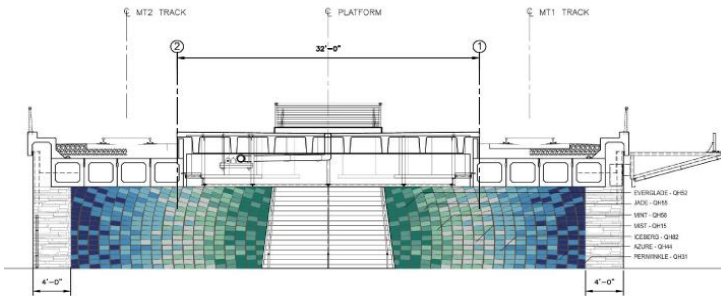
Project Benefits

- Safe rail operations
- Fewer system-wide delays
- Improved traffic flow
- Improved pedestrian and motorist safety
- Facilitate Caltrain electrification which will reduce noise and vibration

Grade Separations



Station Improvements



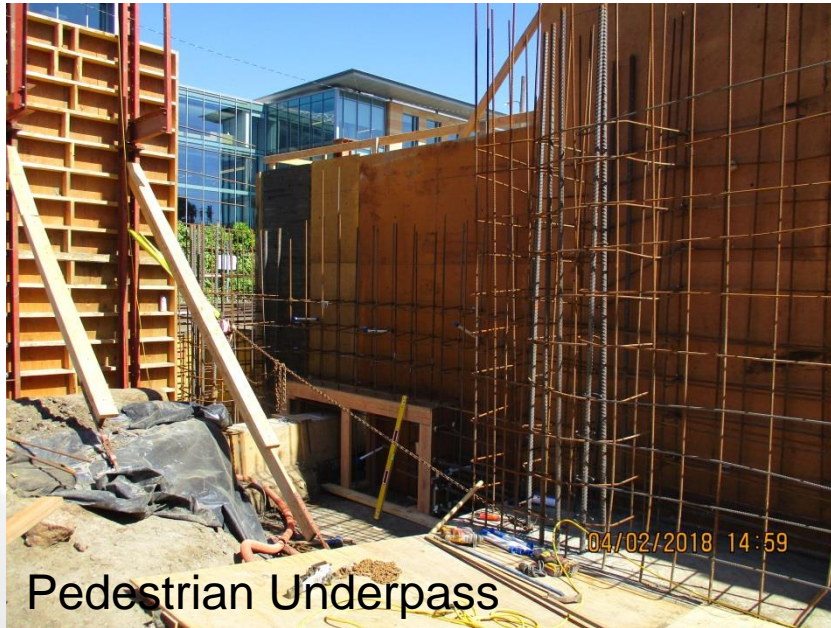
Project Schedule: Overview

Activity	Date
Construction Begins	October 2017
Bridges and MSE Walls	Current – Sept. 2018
E. 25 th Ave. (lane closures)	Current – Jun. 2018
Utility Relocation Work Storm Drain Installation	May 2018 – Dec. 2018 *July 2018
Station Closed	Early 2019 (5 months)
28 th Ave. Complete 31 st Ave. Complete	Mar. 2019 Oct. 2019
E. 25 th Ave. Closure (full)	Oct 2019 (60 Days) – Dec. 2019
Project Complete	Early 2020



*Will be discussed in more detail

Construction





Contact Information

- www.Caltrain.com/25thGS
- Construction Outreach Hotline: 650.508.7726
- Email: SMGradeSep@Caltrain.com