



25th Avenue Grade Separation Project

San Mateo Sustainability & Infrastructure Commission
May 8, 2019

Agenda

- I. Project Description
- II. Project Construction
- III. Station Closure & Outreach
- IV. Questions

Project Description



Project Location



Project Overview

Project Need

- 92 Caltrain trains each weekday use the crossing, in addition to freight
- No. 8 on California Public Utilities Commission railroad crossing safety priority list
- Lack of grade separation increases delays along corridor

Project Elements

- Construct grade separation (elevated rail, lowered road) at 25th Avenue
- New grade separated, east-west connections at 28th and 31st Avenues
- MSE wall (approximately 1 mile)
- 5 bridges
- New Hillsdale Station with updated amenities



Project Benefits

- Improved pedestrian and motorist safety
- Improved traffic flow
- Safe rail operations
- Fewer system-wide delays
- Improve customer experience with new station
- Support Caltrain electrification, which will reduce noise and vibration
- Enhanced east-west connectivity



Elevated Track



Grade Separation (25th Ave)



East-West Connection (28th Ave)



East-West Connection (31st Ave)



Relocated Hillsdale Station



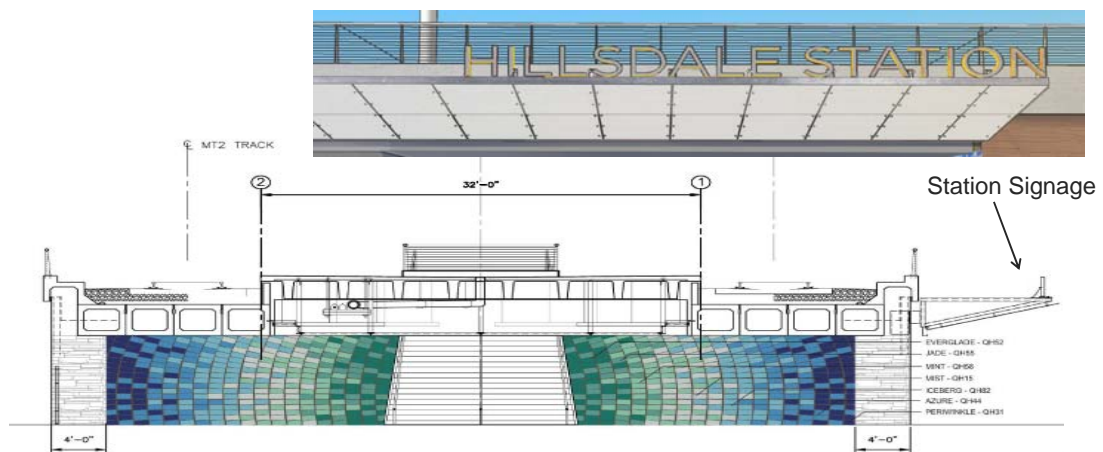
Station Improvements



New Hillsdale Station Access



Station Improvements – Mosaic Wall



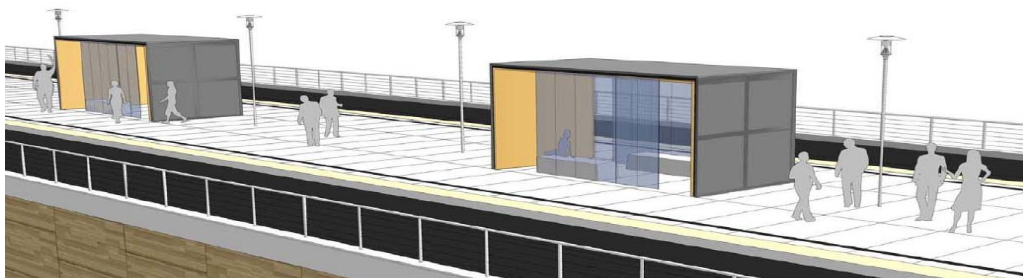
Station Improvements



Stairway Entrance to Platform



Station Improvements - Platform



New Station Platform, Shelters, Lights



Station Improvements - Furnishings



Project Construction

Schedule

Activity	Date
Start of Construction	October 2017
MSE Wall Construction	Sep 2018 – Fall 2019
Station Closed	Dec 2019 to June 2020
Track Cut Over #1 & #2	Feb & March 2020 (1 weekend ea.)
28 th Ave. Completed	June 2020

Schedule Continued

Activity	Date
25 th Ave. Closed	September 2020
25 th Ave. Completed	November 2020
31 st Ave. Completed	January 2021
Project Completed	January 2021

Construction Occurring



Station Closure

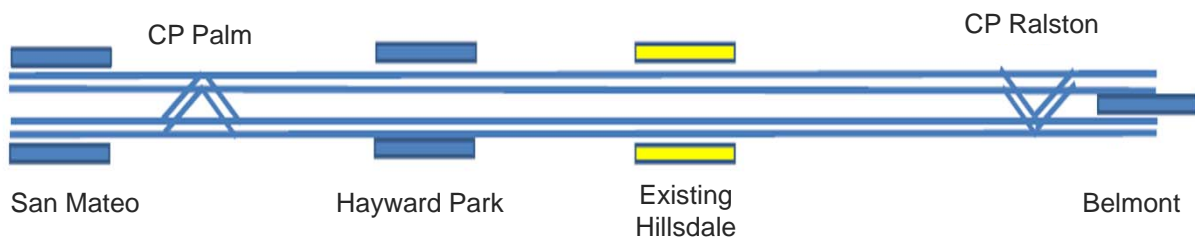
Service During Hillsdale Station Closure

- Examined three options
 - Hayward Park Station only
 - Belmont Station only
 - Combination of Hayward Park and Belmont Stations
- Belmont Station to receive additional train service
 - Operational: to prevent delays, continue smooth service
 - Parking



23

Hayward Park – Operational Constraints



24

Hillsdale Station Closure

Connections Between Stations

- Samtrans bus on El Camino Real
- Additional shuttle service between Belmont and Hillsdale Station during morning and evening commute hours
- Coordination with all public and private shuttles



25

Outreach



26

Outreach

Communication

- Access maps and signage (at Hillsdale and Belmont Stations)
- Notifications: Mailers, social media
- Website

Community Meetings

- Virtual Town Hall
- In-person meetings prior to closure and major milestones



Construction Notices

25th Avenue Grade Separation Project

Dear Caltrain Neighbor,

Starting in mid-October 2017, Caltrain will begin construction on the 25th Avenue Grade Separation Project. Caltrain, in cooperation with the City of San Mateo, will raise the tracks and slightly lower the road (grade separate) at E. 25th Avenue in San Mateo. This will improve safety for both motorists and pedestrians, and it will reduce local traffic congestion in San Mateo. As part of the project, the project will provide an opportunity to complete east-west street connections at 28th and 31st Avenues. As part of the project, Caltrain will build a new elevated Hillsdale Station located at E. 28th Avenue. The new station will offer updated amenities and will allow for better safety and reduced traffic.

The first phase of construction includes the clearing of shrubbery and potholing. Crews will begin to build the bridges and walls needed for the grade separation. Starting October 23, there will be a partial parking lot closure at Hillsdale Station, with temporary parking available at 31st Ave. There will also be periodic partial lane closures and parking restrictions on E. 25th Avenue (all businesses on E. 25th Avenue will remain open for business as usual). In order to maintain regular train service, some activities will be conducted during nights and weekends, outside of normal train service hours. Neighbors may experience construction noise and light during these times. For those who ride Caltrain, there may be some single tracking for a period of time at Hillsdale Station. We apologize for any inconvenience this may cause.

As key milestones approach we will continue to send out notifications. Caltrain also offers a weekly notice for those interested in the latest construction activities. For more information on the project and to sign-up for the weekly construction notice, please visit www.caltrain.com/25thGS. For questions about the project, please call the Caltrain Construction Hotline at 650.508.7726 or email SMGradesep@caltrain.com.

10.6.17

26th Avenue Grade Separation Project: Upcoming Night Work

Dear Caltrain Neighbor,

As part of the 26th Avenue Grade Separation Project, crews will begin installing temporary shoring at 26th Avenue in the Caltrain right-of-way on Wednesday, October 11, 2017. Crews will begin installing temporary shoring at 26th Avenue in the Caltrain right-of-way on Wednesday, October 11, 2017. Crews will begin installing temporary shoring at 26th Avenue in the Caltrain right-of-way on Wednesday, October 11, 2017. Crews will begin installing temporary shoring at 26th Avenue in the Caltrain right-of-way on Wednesday, October 11, 2017.

Partial schedule and lane closures on E. 25th Avenue (between El Camino Real and S. Delaware) are also occurring as part of the project and will be implemented for up to four months. All businesses along E. 25th Avenue will remain open during construction. Please note the construction schedule is subject to change. We apologize for any inconvenience the construction may cause.

The 26th Avenue Grade Separation Project will raise the tracks and slightly lower the road (grade separate) at E. 26th Avenue in San Mateo. Caltrain, in cooperation with the City of San Mateo, is implementing this project to improve safety for both motorists and pedestrians. In addition, the project provides an opportunity to complete east-west street connections at 28th and 31st Avenues. The project will reduce local traffic congestion and turn noise, and as part of the project improvements, Caltrain will build a new elevated Hillsdale Station with updated amenities at E. 28th Avenue, allowing for better safety and reduced traffic. Caltrain offers a weekly notice for those interested in the latest construction activities. To sign-up for the weekly construction notice or for more information visit www.caltrain.com/25thGS. For questions about the project, please call the Caltrain Construction Hotline at 650.508.7726 or email SMGradesep@caltrain.com.

10.10.17

Proyecto de Separación de Niveles en 26th Avenue: Próximamente se realizarán obras nocturnas

Estimado vecino de Caltrain:

Como parte del Proyecto de Separación de Niveles en 26th Avenue, a mediados de febrero los equipos de trabajo comenzarán a instalar puentes temporales en 26th Avenue en el punto de paso de Caltrain. Los trabajos, diseñados para mejorar la seguridad antes de introducir las vías nuevas, consistirán en el uso de maquinaria pesada con un nivel de ruido que puede ser alto durante la noche. Caltrain ofrece a los vecinos un aviso semanal a los fines de semana para que estén preparados para el ruido y la luz durante estas horas. Para aquellos que viajan en una sola vía durante la noche, Caltrain ofrece a los vecinos un aviso semanal a los fines de semana para que estén preparados para el ruido y la luz durante estas horas. Para aquellos que viajan en una sola vía durante la noche, Caltrain ofrece a los vecinos un aviso semanal a los fines de semana para que estén preparados para el ruido y la luz durante estas horas.

Familias se le avisará a cada semana a todas aquellas personas interesadas en las más recientes actividades de construcción. Si desea obtener más información sobre el proyecto, por favor llame al número de línea directa de construcción de Caltrain al 650.508.7726 o envíe un correo electrónico a SMGradesep@caltrain.com.

10.10.17



Project Contact Information

Construction Hotline: 650.508.7726

Email: SMGradeSep@Caltrain.com

www.caltrain.com/25thGS



29

Questions



30