



25th Avenue Grade Separation

Oct. 18, 2017

Agenda

- I. Overview**
- II. Project Description**
- III. Project Benefits**
- IV. Project Construction**
- V. Questions**



Overview



Project Location



E. 25th Ave Railroad Crossing

- 92 Caltrain trains each weekday use this crossing, in addition to freight
- Lack of grade separation increases delays along corridor



Project Description



Project Elements

Construct Grade Separation (elevated rails, lowered roads) between Hillsdale Blvd and Highway 92

- Concrete bridge 25th & 28th Ave
- Steel bridge at 31st Ave
- Concrete retaining walls
- MSE walls

Project Elements Continued

- Reconstruct E. 25th Ave. sidewalks and roadway
- Relocate existing utilities
- Relocate Hillsdale Station and provide station access and parking
- Construct new East-West connections at 28th and 31st Avenues

Elevated Track



Grade Separation (25th Ave)



East-West Connection (28th Ave)



East-West Connection (31st Ave)



Relocated Hillsdale Station



Station Improvements



Stairway Entrance to Platform

Station Improvements - Platform

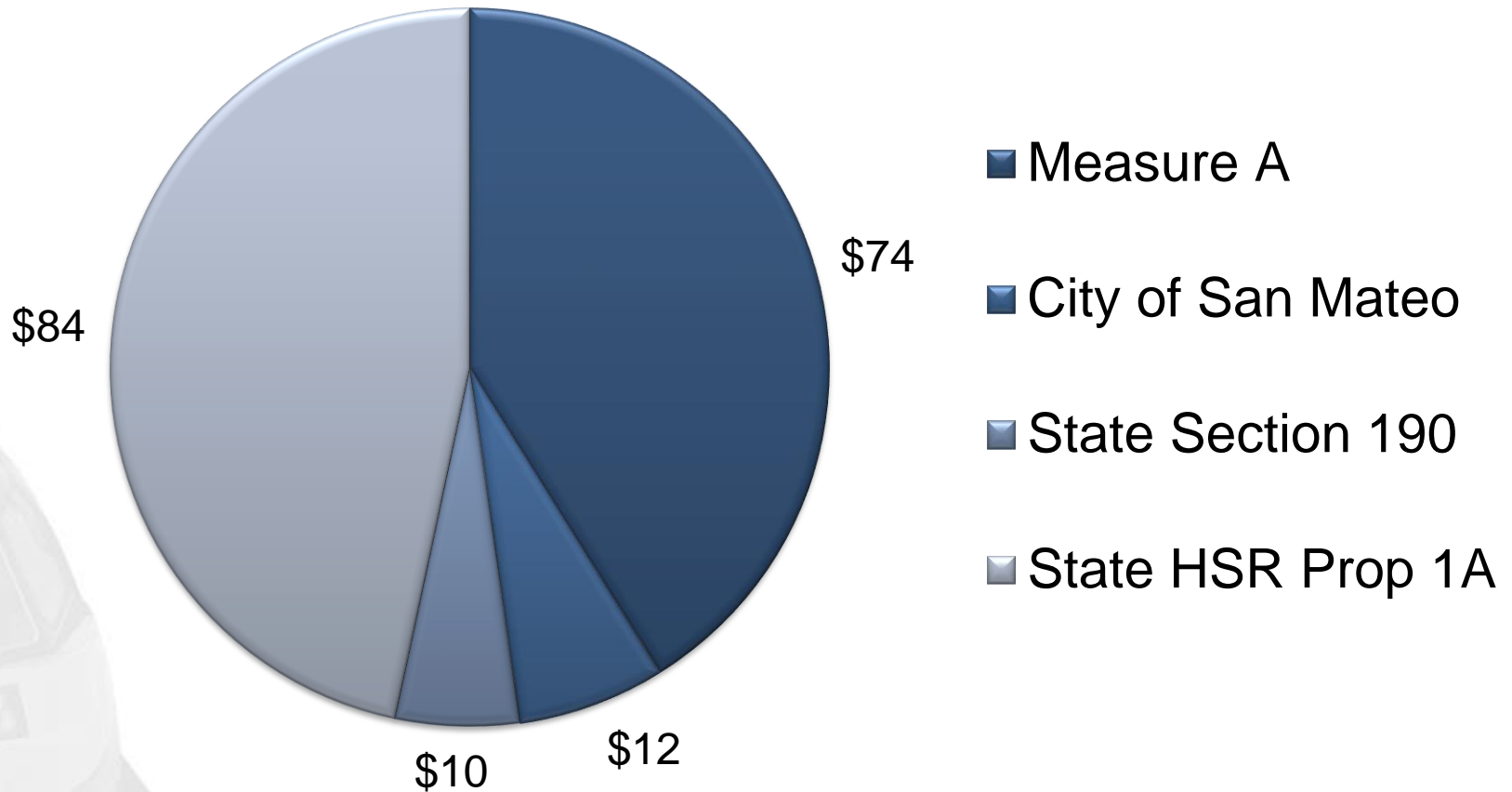


New Station Platform,
Shelters, Lights

Station Improvements - Furnishings



Project Funding, in Millions





Project Benefits



Project Benefits

- Safe rail operations
- Fewer system-wide delays
- Improved traffic flow
- Improved pedestrian and motorist safety
- Facilitate Caltrain electrification which will reduce noise and vibration



Project Construction



Schedule

Activity	Date
Mobilization	Sep 2017 - Oct 2017
Begin Construction	Oct 2017
Hillsdale Station Temporary Parking	Jan 2018 – Dec 2018
Bridges and MSE Walls	Oct 2017 – Mar 2019
25 th Avenue Closure (Partial)	Sep 2017 – Aug 2018
Bridge at E. 25th Ave (14FT clearance)	Apr 2018 – Oct 2019

Schedule – Cont.

Activity	Date
Station Closed	Dec 2018 – May 2019
Roads Completed	May 2019 – 28 th Ave Oct 2019 – 31 st Ave Dec 2019 – 25 th Ave
Project Completed	Jan 2020

Hillsdale Station Closure

- Enhanced train service provided at Belmont Station
- Enhanced Samtrans bus and shuttle service provided between Hillsdale and Belmont Stations

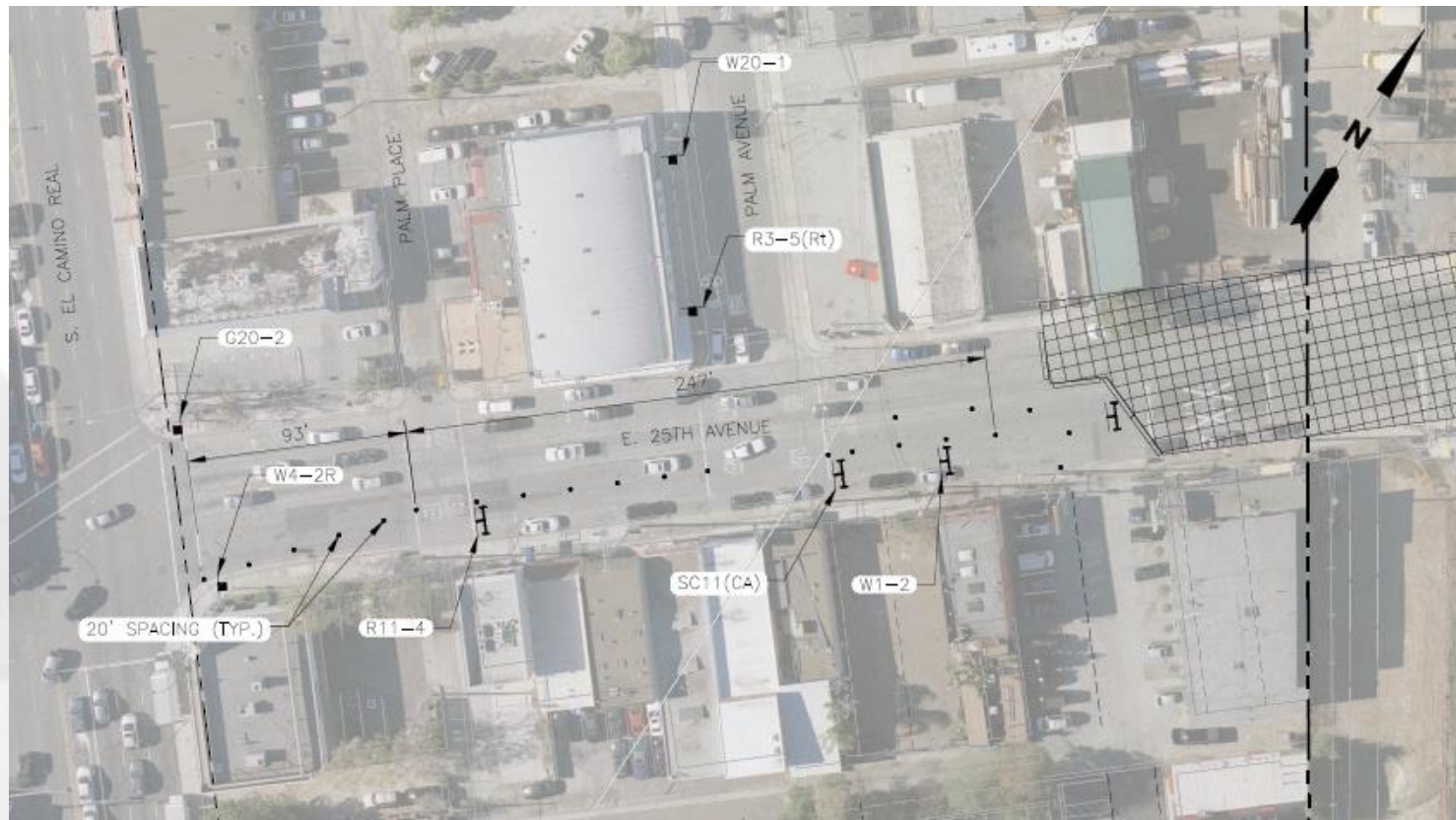
Hillsdale Station Closure

- Passengers who drive, get dropped off or use transit → use Belmont Station
- Passengers who walk to Hillsdale → take Samtrans bus (ECR Line) or shuttle to Belmont Station

Construction Impacts/Mitigation

Traffic and Parking Impacts at 25th Ave

Full closure during reconstruction and lowering road – 60 Days Max





Questions

