



# 25<sup>th</sup> Avenue Grade Separation Project

Open House  
April 17, 2018

# Project Overview



- 92 Caltrain trains each weekday use the 25th Avenue crossing, in addition to freight
- Lack of grade separation increases delays along corridor

# Project Benefits

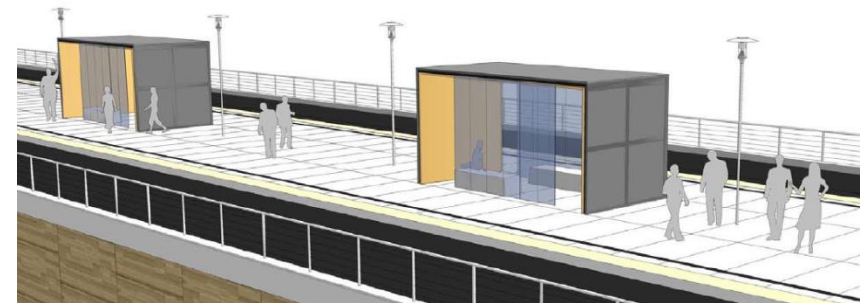
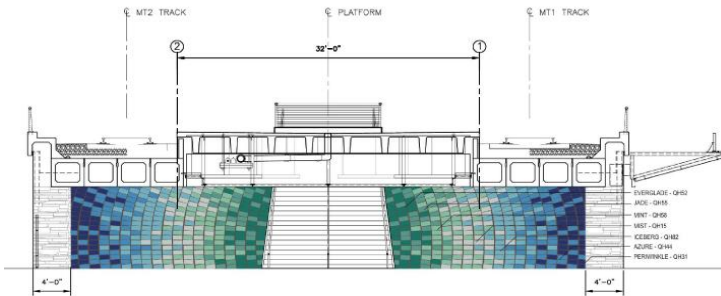
- Safe rail operations
- Fewer system-wide delays
- Improved traffic flow
- Improved pedestrian and motorist safety
- Facilitate Caltrain electrification which will reduce noise and vibration



# Grade Separations



# Station Improvements



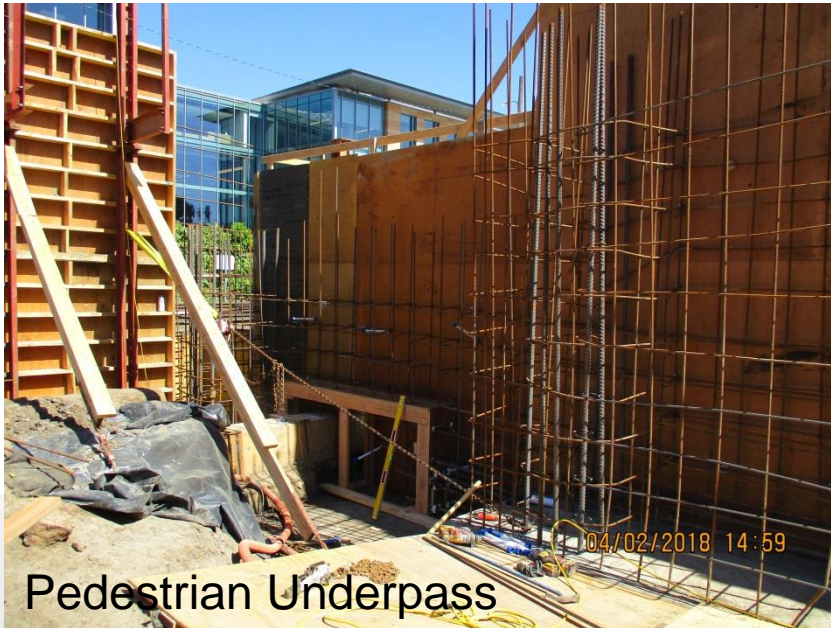


# Schedule: Overview

Activity	Date
Construction Begins	October 2017
Bridges and MSE Walls	Current – Sept. 2018
E. 25 <sup>th</sup> Ave. (intermittent lane closures)	Current – Jun. 2018
PG&E Pipeline Work	May 2018 – Sept. 2018
Station Closed	Early 2019 (5 months)
28 <sup>th</sup> Ave. Complete	Mar. 2019
31 <sup>st</sup> Ave. Complete	Oct. 2019
E. 25 <sup>th</sup> Ave. Closure (full)	Oct 2019 (60 Days)
E. 25 <sup>th</sup> Ave. Complete	Dec 2019
Project Complete	Early 2020



# Construction





# Contact Information

## 25th Avenue Grade Separation Project

- [www.Caltrain.com/25thGS](http://www.Caltrain.com/25thGS)
- Construction Outreach Hotline: 650.508.7726
- Email: SMGradeSep@Caltrain.com

## PG&E Pipeline Work

- [www.PGE.com/Gas](http://www.PGE.com/Gas)
- Project Questions: 650.598.7416





# PG&E Pipeline Work

## PG&E Gas Safety Project

### Gas Pipeline Replacement

Modernizing sections of the natural gas system

Thank you for your patience while we work as quickly and safely as possible.

#### Contact us with questions or concerns

- To learn about our natural gas system, visit [pge.com/gas](http://pge.com/gas)
- For information on fieldwork and pipeline safety programs, call our Gas System Help Line at **1-888-743-7431**
- For questions regarding this project, contact Scott Hart at **1-650-598-7416**



Together, Building  
a Better California



# Open House

