



# 25<sup>th</sup> Avenue Grade Separation

December 13, 2017

# Agenda

- I. Overview**
- II. Project Description**
- III. Project Benefits**
- IV. Project Construction**
- V. Next Steps**
- VI. Questions**



# Overview



# Project Location



## E. 25<sup>th</sup> Ave Railroad Crossing

- 92 Caltrain trains each weekday use this crossing, in addition to freight
- Lack of grade separation increases delays along corridor



# Project Description



# Project Elements

Construct Grade Separation (elevated rails, lowered roads) between Hillsdale Blvd and Highway 92

- Concrete bridge 25<sup>th</sup> & 28<sup>th</sup> Ave
- Steel bridge at 31<sup>st</sup> Ave
- Concrete retaining walls
- MSE walls

# Elevated Track





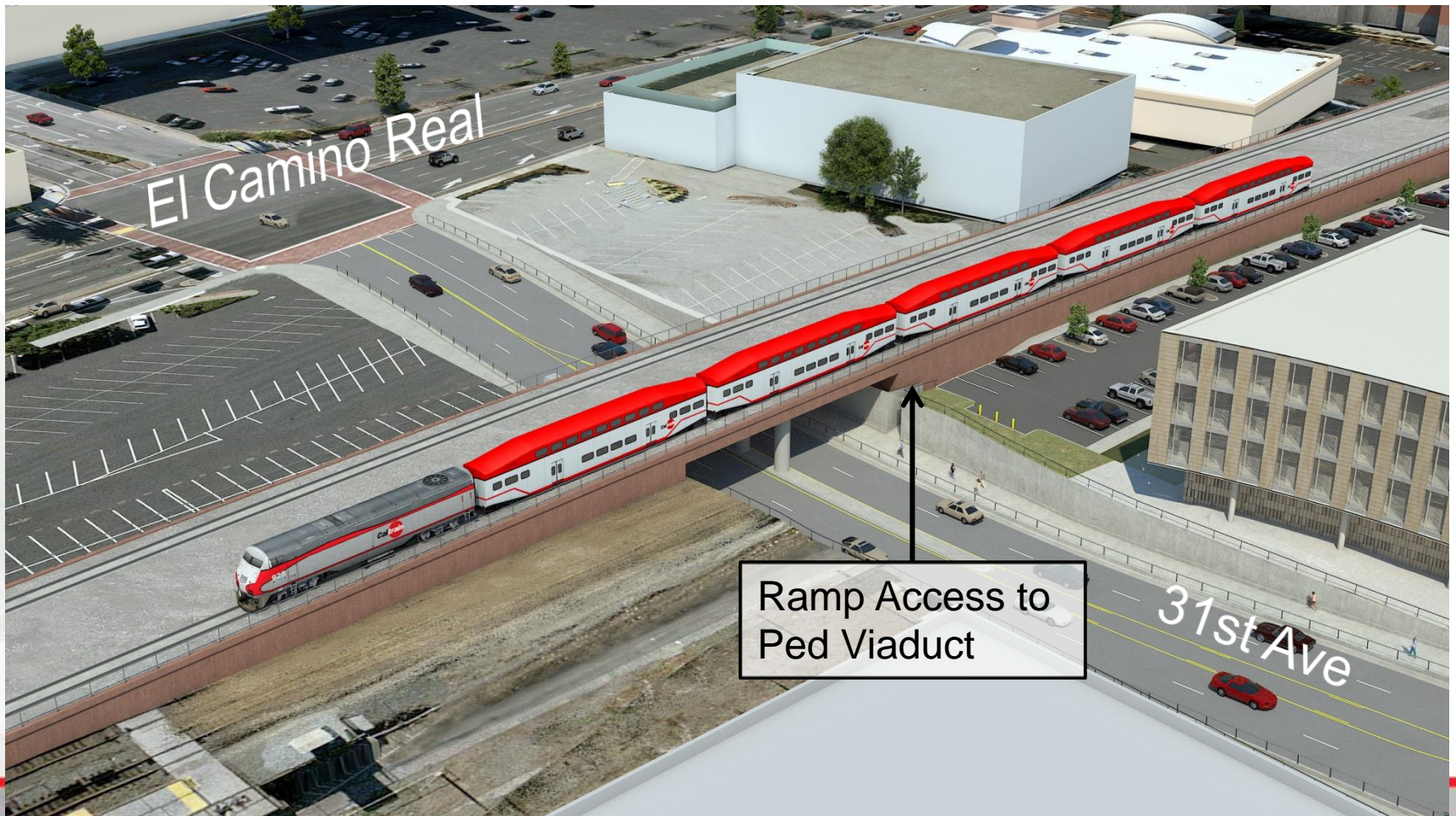
# Grade Separation (25th Ave)



# East-West Connection (28th Ave)



# East-West Connection (31st Ave)



# Relocated Hillsdale Station



# Station Improvements



# Station Improvements – Mosaic Wall

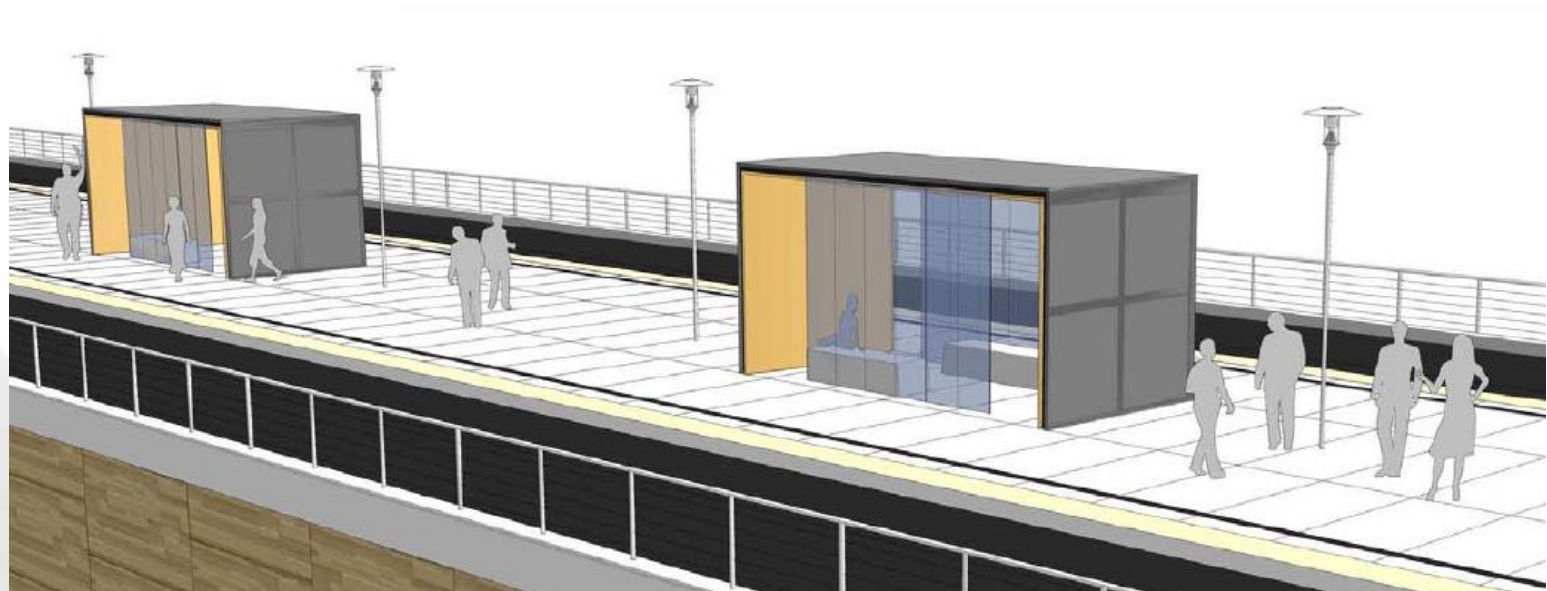


# Station Improvements



Stairway Entrance to Platform

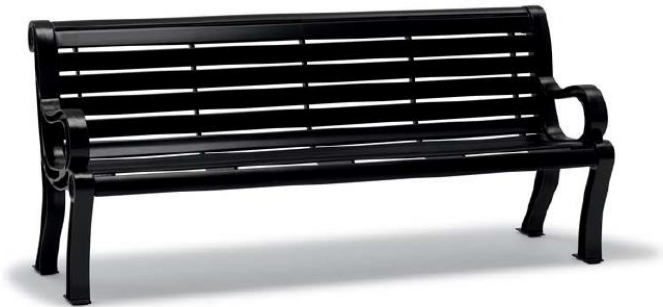
# Station Improvements - Platform



New Station Platform,  
Shelters, Lights



# Station Improvements - Furnishings

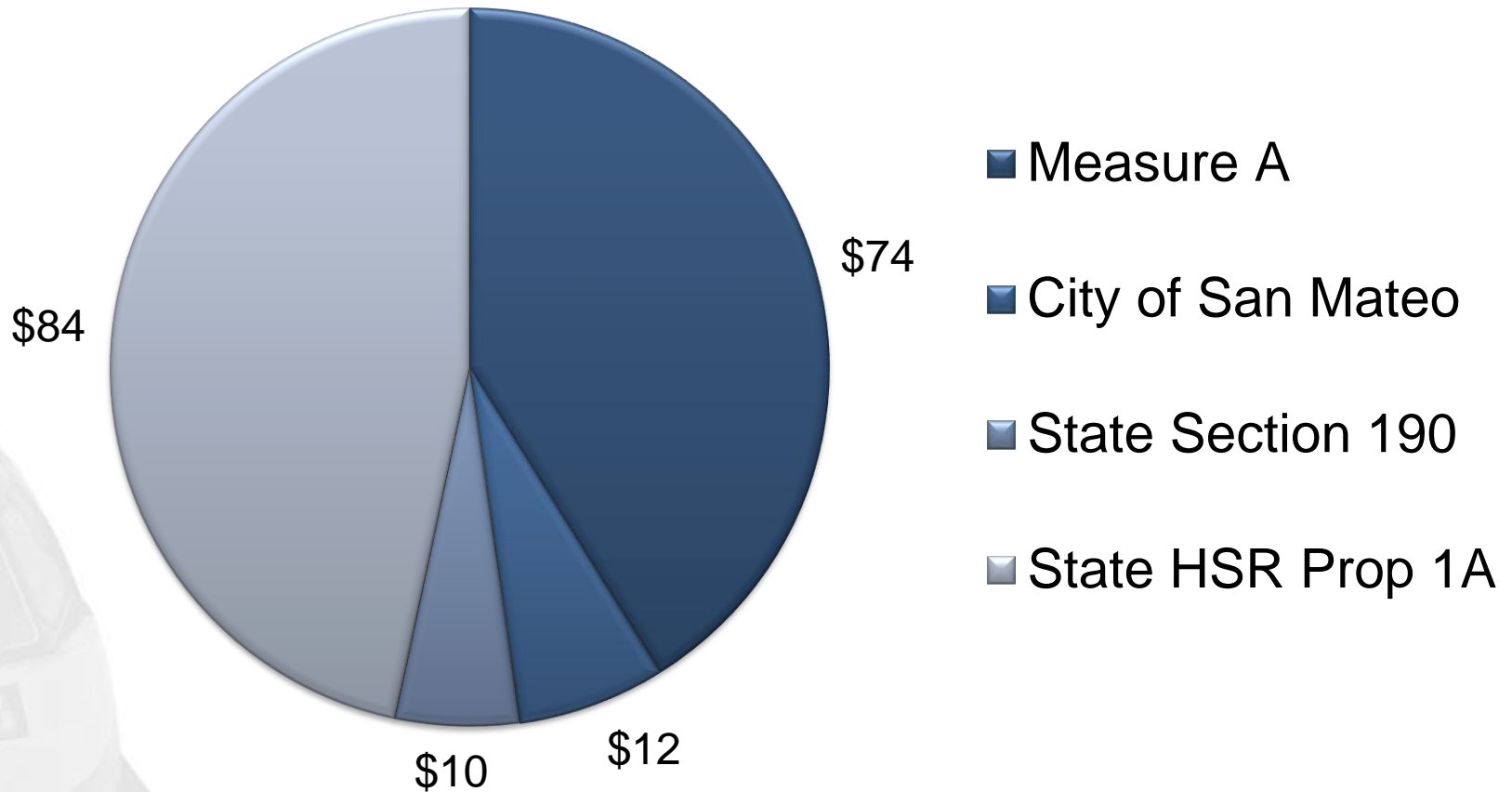


STANLEY™ Create a life.  
Product name for reference. Visit [STANLEY.COM](http://STANLEY.COM) for details.

# New Hillsdale Station Access



# Project Funding, in Millions





# Project Benefits



# Project Benefits

- Safe rail operations
- Fewer system-wide delays
- Improved traffic flow
- Improved pedestrian and motorist safety
- Facilitate Caltrain electrification which will reduce noise and vibration



# Project Construction



# Schedule: Overview

Activity	Date
Mobilization	Sept 2017 - Oct 2017
Begin Construction	Oct 2017
Hillsdale Station Temp Parking (available for public use)	Oct 2017 – Dec 2018
Bridges and MSE Walls	Nov 2017 – Mar 2019
E. 25 <sup>th</sup> Ave. (lane closures)	Nov 2017 – Oct 2019
Bridge at E. 25th Ave (14FT clearance)	May 2018 – Oct 2019

## Schedule: Overview cont.

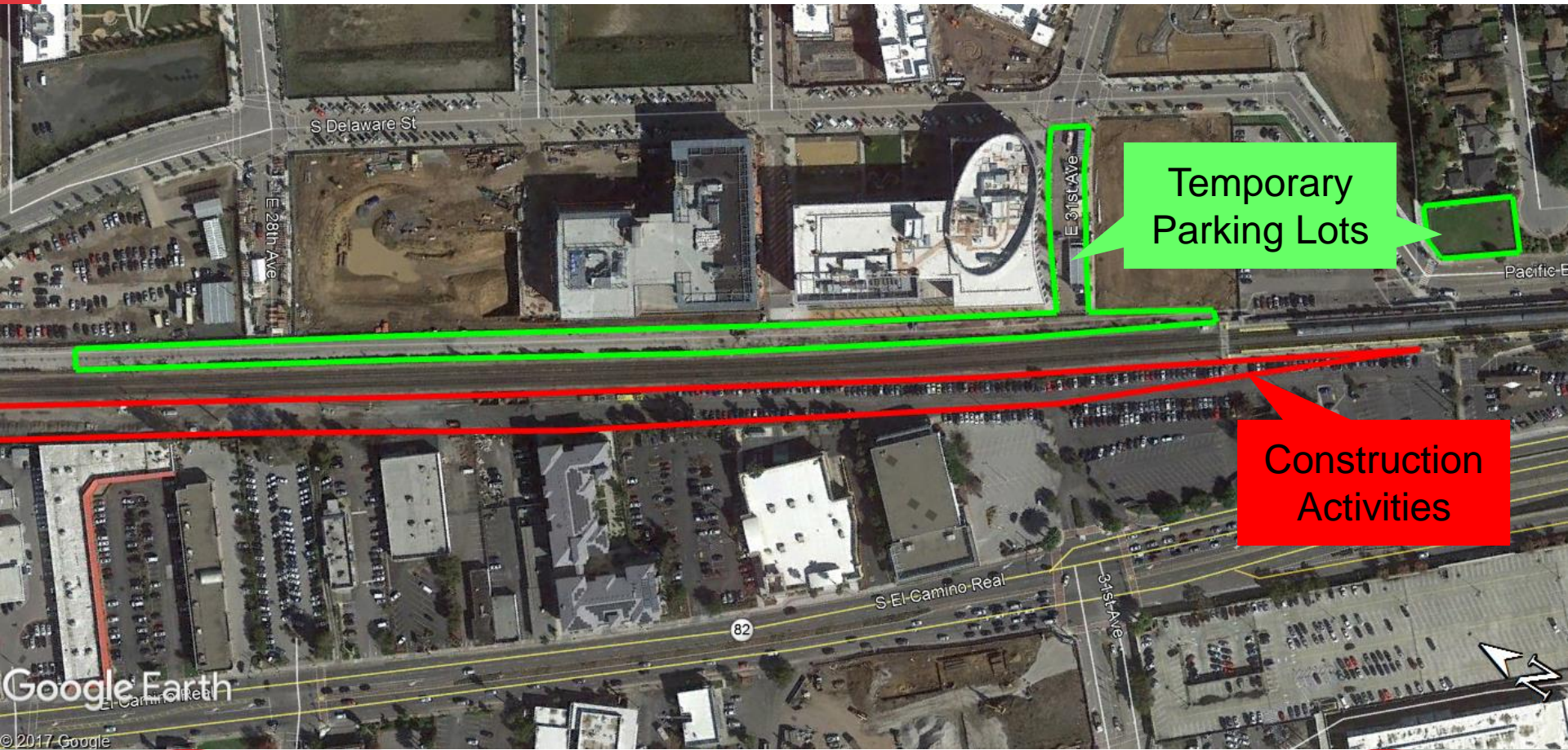
Activity	Date
Station Closed	Dec 2018 – May 2019
Road Completed – 28 <sup>th</sup> Ave	May 2019
E. 25 <sup>th</sup> Ave. Closure (full)	Oct 2019 – Dec 2019
Roads Completed	Oct 2019 – 31 <sup>st</sup> Ave Dec 2019 – 25 <sup>th</sup> Ave
Project Completed	Jan 2020



# Schedule: Night Work Overview

Activity	Date
Temporary Sheet Pile Shoring	Nov 2017 – Dec 2017
Cast-in-drilled-hole pile construction	Nov 2017 – Feb 2018
MSE walls	Feb 2018 – July 2018
Bridge	March 2018 – July 2018
Final Track Cutover	Nov 2018

# Existing Hillsdale Station Temporary Parking Lot



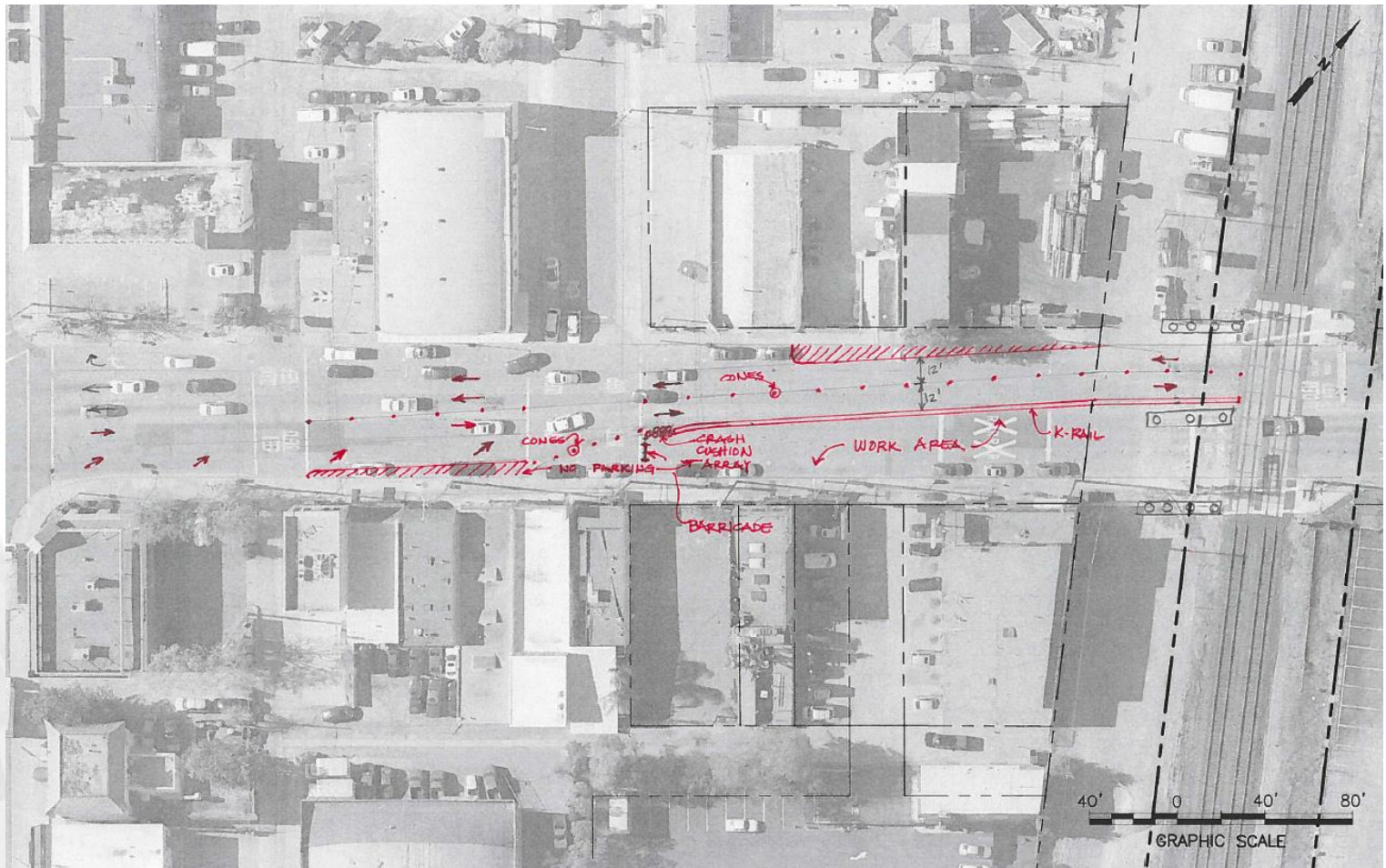
# Hillsdale Station Closure

- Enhanced train service provided at Belmont Station
- Enhanced Samtrans bus and shuttle service provided between Hillsdale and Belmont Stations

# Hillsdale Station Closure

- Passengers who drive, get dropped off or use transit → use Belmont Station
- Passengers who walk to Hillsdale → take Samtrans bus (ECR Line) or shuttle to Belmont Station
  - Shuttle schedule will match enhanced train schedule
  - Shuttle pick-up location at east triangular lot

# Example Lane Closure: 25th Ave



# Work Hours

- Majority of construction activities will take place Mon-Fri during the day
- Certain construction activities require work to be completed at night or on weekends when there is reduced or no revenue train service
- JPB will notify community in advance of nighttime and weekend work

# Potential Impacts during Construction

## Noise and Vibration Impacts:

- Temporary: Only during construction
- Construction equipment and procedures selected to monitor noise and vibration impacts
- Noise monitoring station at Peninsula Station (2901 ECR)



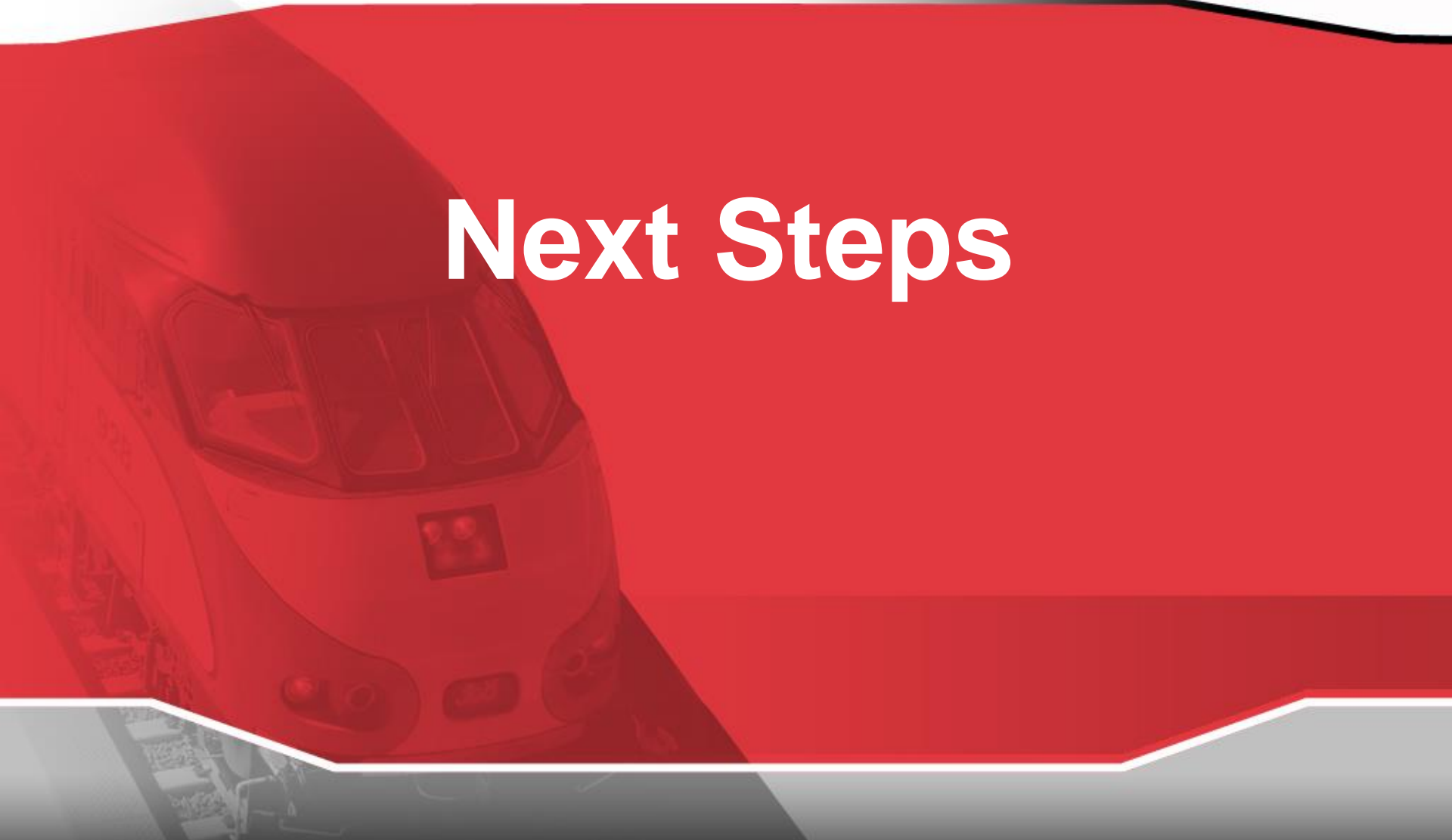
# Construction Impacts / Mitigation

- Single tracking trains
- Shoring Work
  - Pre-drilling (will also occur during day)
  - Different equipment obtained
- Pile Work: Additional crew/equipment



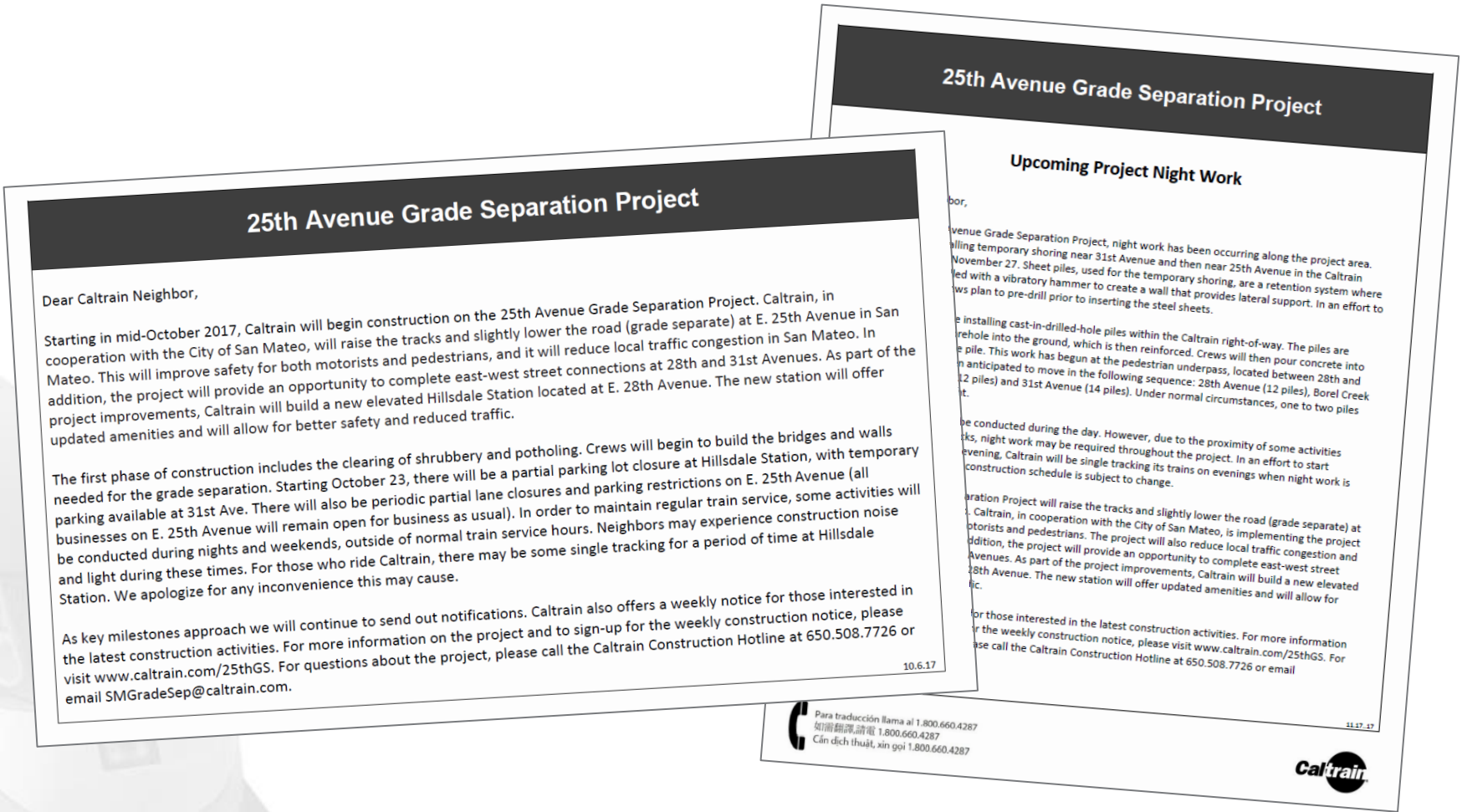


# Next Steps





# Construction Notices



## 25th Avenue Grade Separation Project

Dear Caltrain Neighbor,

Starting in mid-October 2017, Caltrain will begin construction on the 25th Avenue Grade Separation Project. Caltrain, in cooperation with the City of San Mateo, will raise the tracks and slightly lower the road (grade separate) at E. 25th Avenue in San Mateo. This will improve safety for both motorists and pedestrians, and it will reduce local traffic congestion in San Mateo. In addition, the project will provide an opportunity to complete east-west street connections at 28th and 31st Avenues. As part of the project improvements, Caltrain will build a new elevated Hillsdale Station located at E. 28th Avenue. The new station will offer updated amenities and will allow for better safety and reduced traffic.

The first phase of construction includes the clearing of shrubbery and potholing. Crews will begin to build the bridges and walls needed for the grade separation. Starting October 23, there will be a partial parking lot closure at Hillsdale Station, with temporary parking available at 31st Ave. There will also be periodic partial lane closures and parking restrictions on E. 25th Avenue (all businesses on E. 25th Avenue will remain open for business as usual). In order to maintain regular train service, some activities will be conducted during nights and weekends, outside of normal train service hours. Neighbors may experience construction noise and light during these times. For those who ride Caltrain, there may be some single tracking for a period of time at Hillsdale Station. We apologize for any inconvenience this may cause.

As key milestones approach we will continue to send out notifications. Caltrain also offers a weekly notice for those interested in the latest construction activities. For more information on the project and to sign-up for the weekly construction notice, please visit [www.caltrain.com/25thGS](http://www.caltrain.com/25thGS). For questions about the project, please call the Caltrain Construction Hotline at 650.508.7726 or email [SMGradeSep@caltrain.com](mailto:SMGradeSep@caltrain.com).

10.6.17

## 25th Avenue Grade Separation Project

### Upcoming Project Night Work

For the 25th Avenue Grade Separation Project, night work has been occurring along the project area. Temporary shoring near 31st Avenue and then near 25th Avenue in the Caltrain right-of-way, installed on November 27. Sheet piles, used for the temporary shoring, are a retention system where sheet piles are driven into the ground with a vibratory hammer to create a wall that provides lateral support. In an effort to reduce noise, crews plan to pre-drill prior to inserting the steel sheets.

Crews are installing cast-in-drilled-hole piles within the Caltrain right-of-way. The piles are drilled into the ground, which is then reinforced. Crews will then pour concrete into the hole to form the pile. This work has begun at the pedestrian underpass, located between 28th and 31st Avenues. Work is anticipated to move in the following sequence: 28th Avenue (12 piles), Borel Creek (12 piles) and 31st Avenue (14 piles). Under normal circumstances, one to two piles are installed per day.

Construction activities will be conducted during the day. However, due to the proximity of some activities to residential areas, some night work may be required throughout the project. In an effort to start construction as early as possible in the evening, Caltrain will be single tracking its trains on evenings when night work is required. The construction schedule is subject to change.

The 25th Avenue Grade Separation Project will raise the tracks and slightly lower the road (grade separate) at E. 25th Avenue in San Mateo. Caltrain, in cooperation with the City of San Mateo, is implementing the project to improve safety for motorists and pedestrians. The project will also reduce local traffic congestion and provide an opportunity to complete east-west street connections at 28th and 31st Avenues. As part of the project improvements, Caltrain will build a new elevated Hillsdale Station located at E. 28th Avenue. The new station will offer updated amenities and will allow for better safety and reduced traffic.

For those interested in the latest construction activities. For more information on the project and to sign-up for the weekly construction notice, please visit [www.caltrain.com/25thGS](http://www.caltrain.com/25thGS). For questions about the project, please call the Caltrain Construction Hotline at 650.508.7726 or email [SMGradeSep@caltrain.com](mailto:SMGradeSep@caltrain.com).

11.17.17

Para traducción llame al 1.800.660.4287  
如需翻譯,請電 1.800.660.4287  
Für die Übersetzung, rufen Sie 1.800.660.4287



## Public Outreach & Community Engagement

- Project website:  
[www.caltrain.com/25thGS](http://www.caltrain.com/25thGS)
- Construction Outreach Hotline: 650.508.7726
- Email: SMGradeSep@Caltrain.com
- Regular Updates and Public Meetings
  - Prior to Station Closure
  - Prior to Street Closure

- Schedules
- Stations
- Fares
- Rider Information
- Projects & Plans**
  - Projects
  - Plans
  - Caltrain Modernization
- About Caltrain



+ Print Text Size  
> caltrain.com > Projects & Plans > Projects > Caltrain Capital Program > 25th Avenue Grade Separation

## 25th Avenue Grade Separation

Sign Up for Project Updates



Rendering of Completed 25th Avenue Grade Separation Project

**Subscribe**  
You can now receive Caltrain notifications via e-mail!  
Find out more [HERE](#)

- Highlights**
- Weekday Timetable
  - Weekend Timetable
  - Special Events
  - Electrification





# Contact

<b>Construction Information</b>	<b>Service Information</b>
<p data-bbox="280 596 853 718"><b>Office of Public Affairs</b> <b>Phone: 650.508.7726</b></p>	<p data-bbox="1066 596 1839 718"><b>Customer Service Department</b> <b>Phone: 800.660.4287</b></p>
<p data-bbox="653 839 1336 1011"><b>1250 San Carlos Avenue</b> <b>PO Box 3006</b> <b>San Carlos, CA 94040-1306</b></p>	
<p data-bbox="666 1082 1323 1132"><b><a href="http://www.caltrain.com/25thGS">www.caltrain.com/25thGS</a></b></p>	



# Questions

