



25th Avenue Grade Separation

Community Meeting
November 13, 2018

Agenda

- I. Project Need**
- II. Project Benefits**
- III. Project Description**
- IV. Funding**
- V. Schedule**
- VI. Construction**
- VII. Next Steps**

Project Need



E. 25th Ave Railroad Crossing

- 92 Caltrain trains each weekday use this crossing, in addition to freight
- Lack of grade separation increases delays along corridor

Project Benefits



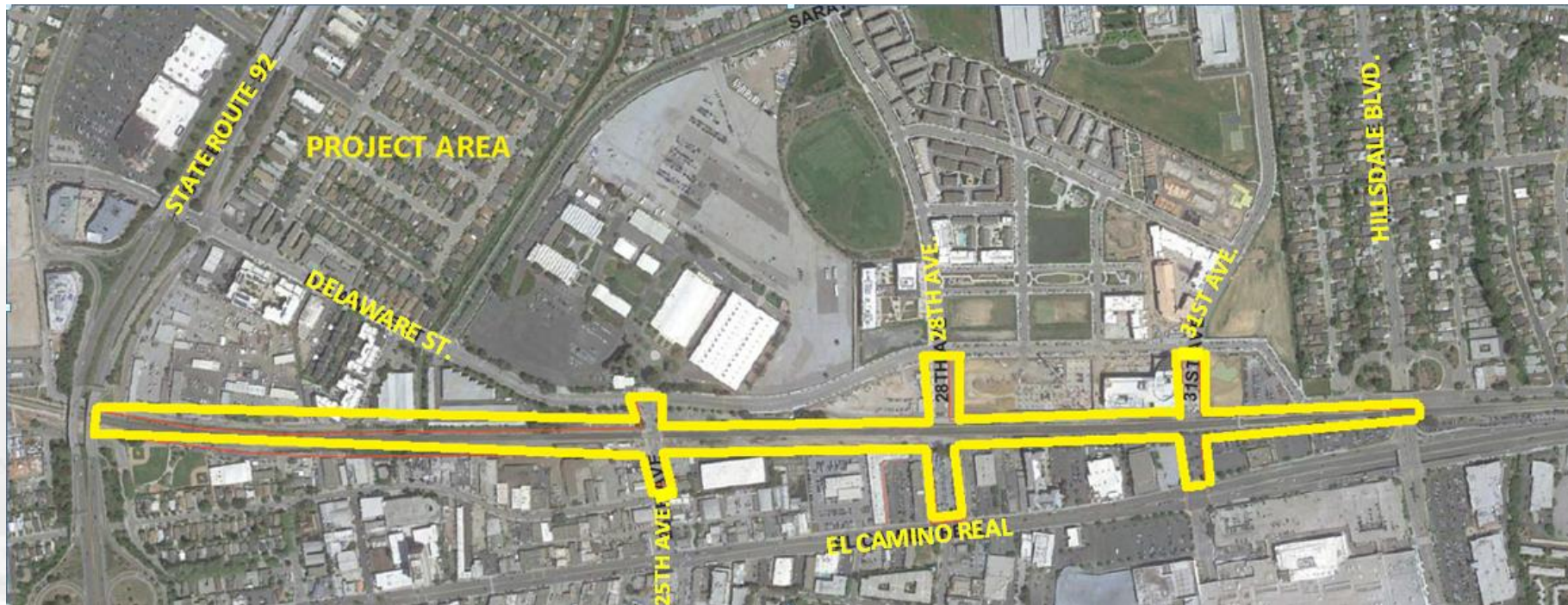
Project Benefits

- Safe rail operations
- Fewer system-wide delays
- Improved traffic flow
- Enhanced E-W connectivity
- Improved pedestrian and motorist safety
- Support Caltrain electrification

Project Description



Project Location



Project Elements

Construct Grade Separation (elevated rails, lowered roads) between Hillsdale Blvd and Highway 92

- Five bridges
- Approx. 1 mile of MSE Wall
- New elevated station at Hillsdale

Elevated Track



Grade Separation (25th Ave)



East-West Connection (28th Ave)



East-West Connection (31st Ave)



Relocated Hillsdale Station



Station Improvements



New Hillsdale Station Access



Station Improvements – Mosaic Wall

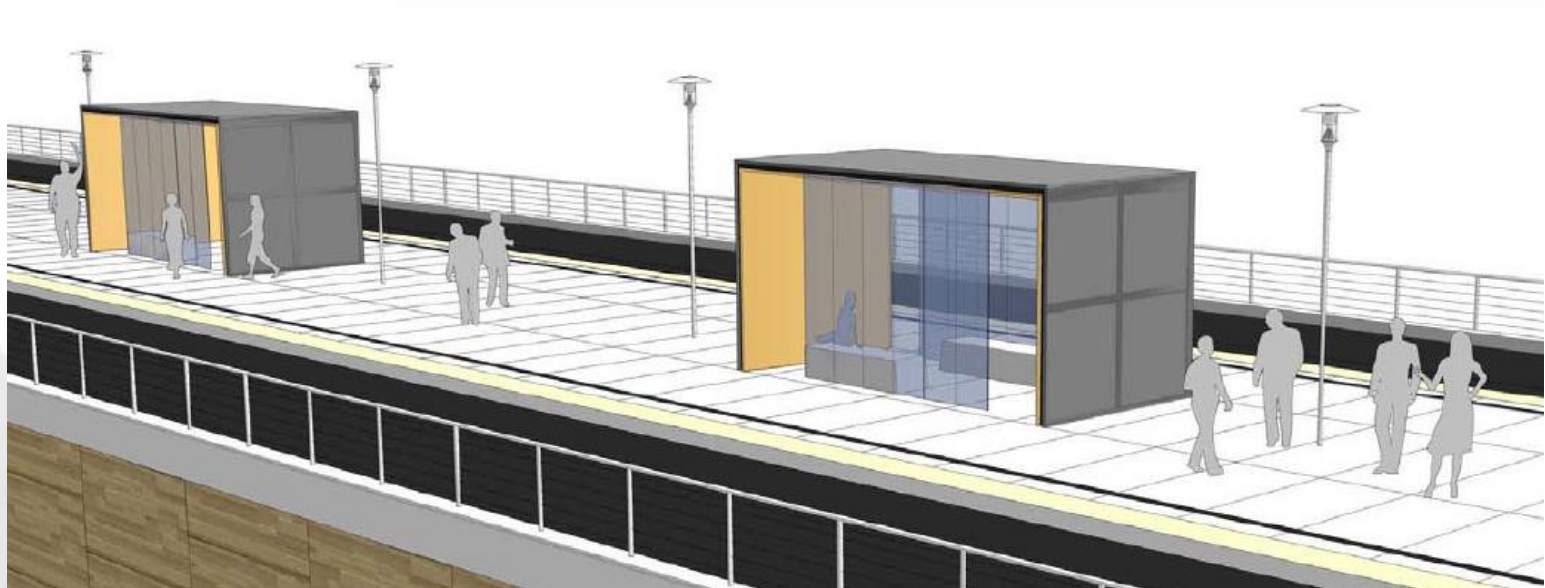


Station Improvements



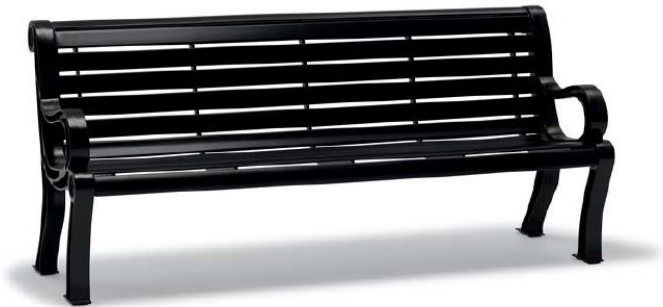
Stairway Entrance to Platform

Station Improvements - Platform



New Station Platform,
Shelters, Lights

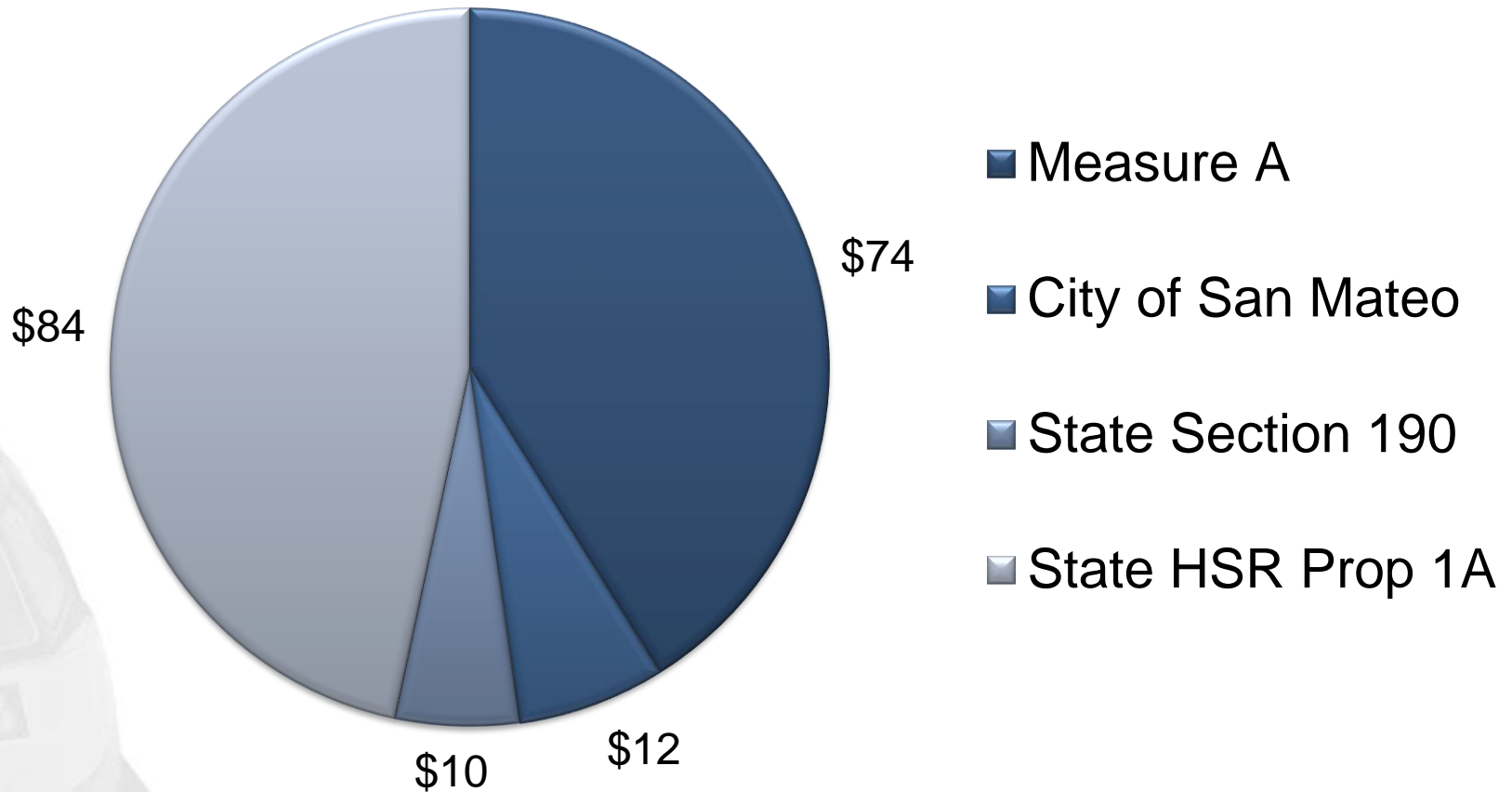
Station Improvements - Furnishings



STANLEY™ Create a life.
Product name for reference. Visit STANLEY.COM for details.

Project Funding

Project Funding, in Millions



Schedule



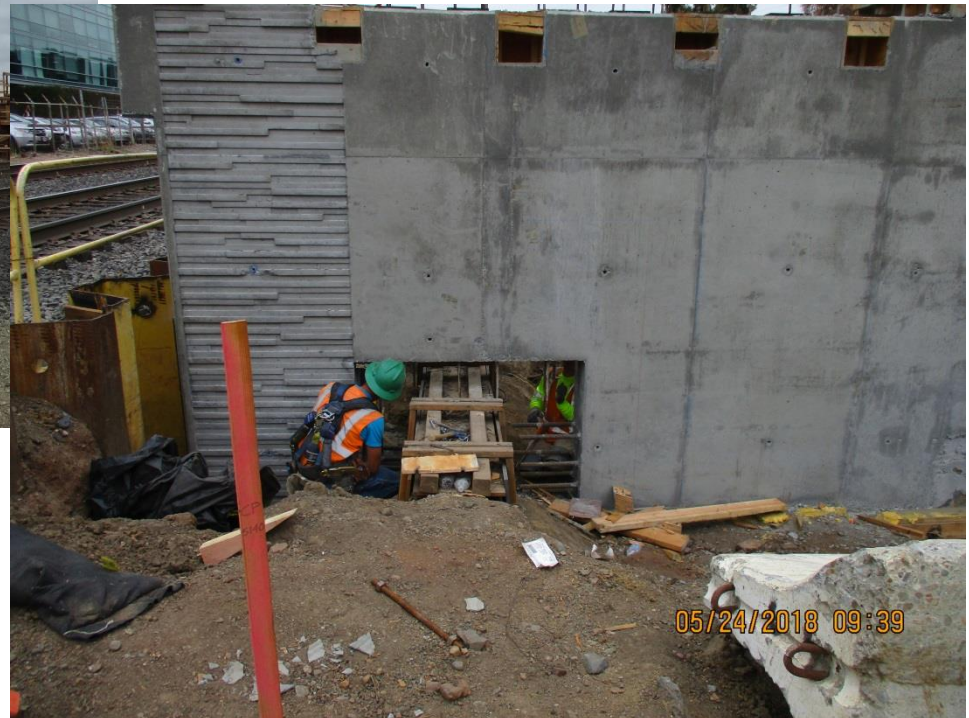
Schedule Impacts

- Fiber optic conflicts
- OCS milestone

Schedule Impacts



Schedule Impacts



Schedule

Activity	Date
MSE Wall Construction	Sep 2018 - Oct 2019
AT&T Relocation	Summer 2019
Station Closed	Sept 2019 – Feb. 2020
Track Cut Over #1 & #2	Fall 2019 (1 weekend ea.)
28 th Ave. Completed	Feb. 2020
25 th Ave. Closed	Spring 2020

Schedule Continued

Activity	Date
31 st Ave. Completed	August 2020
25 th Ave. Completed	April 2020
Project Completed	Oct. 2020

Hillsdale Station Closure

- Passengers who drive, get dropped off or use transit → use Belmont Station
- Passengers who walk to Hillsdale → take Samtrans bus (ECR Line) or shuttle to Belmont Station
 - Shuttle schedule will match enhanced train schedule
 - Shuttle pick-up location at east triangular lot

Construction



Project Progress

Bridges

Beresford Creek – Complete

25th Ave – Abutments & Columns Complete

28th Ave – Abutments on going

Pedestrian U/P – Installed bridge girders

31st Ave – Ready to install TPFOC Protection

Relocate Utilities:

- Third Party Utilities: On Going
- JPB Utilities: On Going

MSE Wall construction has begun

Bridges



MSE Wall



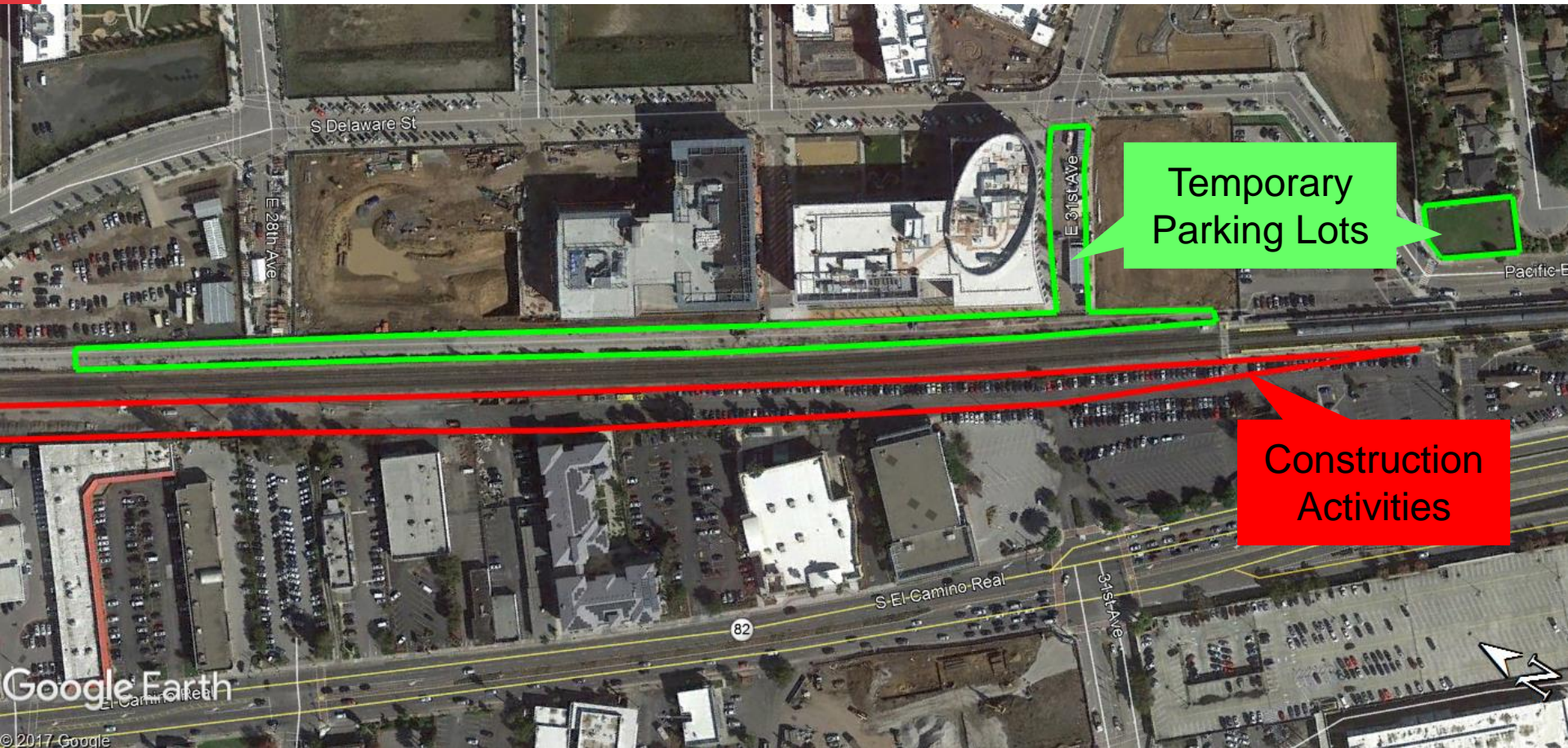
Bridge at MSE Wall



PG&E Gas Line Relocation



Existing Hillside Station Temporary Parking Lot



Temporary
Parking Lots

Construction
Activities

Work Hours

- Majority of construction activities will take place Mon-Fri during the day
- Certain construction activities require work to be completed at night or on weekends when there is reduced or no revenue train service
- JPB will notify community in advance of nighttime and weekend work

Potential Impacts during Construction

Noise and Vibration Impacts:

- Temporary: Only during construction
- Construction equipment and procedures selected to monitor noise and vibration impacts
- Noise monitoring station at Peninsula Station (2901 ECR)

(Not to Scale)



Construction Impacts / Mitigation

- Single tracking trains
- Shoring Work
 - Pre-drilling (will also occur during day)
 - Different equipment obtained
- Pile Work: Additional crew/equipment

Next Steps

Public Outreach & Community Engagement

- Weekly Construction Updates
- Construction Notices
- Website and Social Media
- Public Meetings
 - Prior to Station Closure
 - Major Milestones

- Schedules
- Stations
- Fares
- Rider Information
- Projects & Plans**
 - Projects
 - Plans
 - Caltrain Modernization
- About Caltrain



> caltrain.com > Projects & Plans > Projects > Caltrain Capital Program > 25th Avenue Grade Separation

+ Print Text Size

25th Avenue Grade Separation

Sign Up for Project Updates



Rendering of Completed 25th Avenue Grade Separation Project

Subscribe

You can now receive Caltrain notifications via e-mail!
Find out more [HERE](#)

- ### Highlights
- Weekday Timetable
 - Weekend Timetable
 - Special Events
 - Electrification

Social

Social Media



Construction Notices

25th Avenue Grade Separation Project

Dear Caltrain Neighbor,

Starting in mid-October 2017, Caltrain will begin construction on the 25th Avenue Grade Separation Project. Caltrain, in cooperation with the City of San Mateo, will raise the tracks and slightly lower the road (grade separate) at E. 25th Avenue in San Mateo. This will improve safety for both motorists and pedestrians, and it will reduce local traffic congestion in San Mateo. In addition, the project will provide an opportunity to complete east-west street connections at 28th and 31st Avenues. As part of the project improvements, Caltrain will build a new elevated Hillsdale Station located at E. 28th Avenue. The new station will offer updated amenities and will allow for better safety and reduced traffic.

The first phase of construction includes the clearing of shrubbery and potholing. Crews will begin to build the bridges and walls needed for the grade separation. Starting October 23, there will be a partial parking lot closure at Hillsdale Station, with temporary parking available at 31st Ave. There will also be periodic partial lane closures and parking restrictions on E. 25th Avenue (all businesses on E. 25th Avenue will remain open for business as usual). In order to maintain regular train service, some activities will be conducted during nights and weekends, outside of normal train service hours. Neighbors may experience construction noise and light during these times. For those who ride Caltrain, there may be some single tracking for a period of time at Hillsdale Station. We apologize for any inconvenience this may cause.

As key milestones approach we will continue to send out notifications. Caltrain also offers a weekly notice for those interested in the latest construction activities. For more information on the project and to sign-up for the weekly construction notice, please visit www.caltrain.com/25thGS. For questions about the project, please call the Caltrain Construction Hotline at 650.508.7726 or email SMGradeSep@caltrain.com.

10.6.17

25th Avenue Grade Separation Project: Upcoming Night Work

Dear Caltrain Neighbor,

As part of the 25th Avenue Grade Separation Project, crews will begin installing temporary shoring at 25th Avenue in the Caltrain right-of-way in mid-February. Sheet piles, used for temporary shoring, are a retention system where steel sheets are installed with a vibratory hammer to create a support wall. In an effort to mitigate the noise, crews will pre-drill prior to inserting the sheets. The majority of work is conducted during the day, some night work is required due to the activity's proximity to the railroad. To start construction earlier in the evening, Caltrain plans to single track its trains when night work is scheduled.

sidewalk and lane closures on E. 25th Avenue (between El Camino Real and S. Delaware) are also occurring as part of the project and will be intermittent for up to four months. All businesses along E. 25th Avenue will remain open during construction. The construction schedule is subject to change. We apologize for any inconvenience the construction may cause.

25th Avenue Grade Separation Project will raise the tracks and slightly lower the road (grade separate) at E. 25th Avenue in San Mateo. Caltrain, in cooperation with the City of San Mateo, is implementing the project to improve safety for both motorists and pedestrians. In addition, the project provides an opportunity to complete east-west street connections at 28th and 31st Avenues. The project will reduce local traffic congestion and horn noise, and as part of the project improvements, Caltrain will build a new elevated Hillsdale Station with updated amenities at E. 28th Avenue, allowing for better safety and reduced traffic.

We offer a weekly notice for those interested in the latest construction activities. To sign-up for the weekly construction notice, please visit www.caltrain.com/25thGS. For questions about the project, please call the Caltrain Construction Hotline at 650.508.7726 or email SMGradeSep@caltrain.com.

1.8.18

Proyecto de Separación de Niveles en 25th Avenue: Próximamente se realizarán obras nocturnas

Dear Caltrain Neighbor,

Como parte del Proyecto de Separación de Niveles en 25th Avenue, a mediados de febrero los equipos de trabajo empezarán a instalar pilas de acero en el derecho de paso de Caltrain. Las pilas de acero, utilizadas para apuntalar y retención. Con el propósito de reducir el ruido, los equipos de trabajo realizarán perforaciones preliminares en las tablas de acero. Aunque la mayor parte de la obra se llevará a cabo durante el día, es necesario realizar algunas actividades durante la noche. Para comenzar las obras de construcción más temprano por la noche, Caltrain planea operar un solo tren en la vía cuando se haya programado trabajo nocturno.

El primer fase de construcción incluye la limpieza de maleza y el potholing. Los equipos comenzarán a construir los puentes y muros necesarios para la separación de niveles en la 25th Avenue (entre El Camino Real y S. Delaware) como parte del proyecto y serán intermitentes durante hasta cuatro meses. Todos los negocios ubicados a lo largo de E. 25th Avenue permanecerán abiertos durante la construcción. El horario de construcción está sujeto a cambios. Le pedimos disculpas por cualquier molestia que las obras de construcción pudieran ocasionar.

El Proyecto de Separación de Niveles en 25th Avenue elevará las vías y reducirá ligeramente el nivel de la calle (separación de niveles) en San Mateo. Caltrain, en cooperación con la Ciudad de San Mateo, implementa este proyecto con el propósito de mejorar la seguridad para los peatones y reducir la congestión del tráfico local y el ruido de los autos. Además, el proyecto brinda la oportunidad de construir una nueva Estación Hillsdale elevada en la 28th Avenue, lo que reforzará la seguridad y reducirá el tráfico.

Para recibir el aviso semanal a todas aquellas personas interesadas en las más recientes actividades de construcción. Si desea alguna pregunta acerca del proyecto, o información adicional, visite www.caltrain.com/25thGS. Si tiene alguna pregunta, llame a la Línea Directa de Construcción de Caltrain al 650.508.7726 o envíe un correo electrónico a SMGradeSep@caltrain.com.

Para traducción llama al 1.800.660.4287
中文服務熱線: 1.800.660.4287
越南服務熱線: 1.800.660.4287





Contact Information

Caltrain

Website: www.caltrain.com/25thGS

Phone: 650.508.7726

Email: SMGradeSep@Caltrain.com

Twitter: [@Caltrain](#), [@GoCaltrain](#)

City of San Mateo

Website: <http://bit.ly/CoSM-25thGrade>

Twitter: [@CityofSanMateo](#)