



# 25<sup>th</sup> Avenue Grade Separation

San Mateo City Council  
November 5, 2018

# Agenda

- I. Project Need and Description**
- II. Project Benefits**
- III. Schedule**
- IV. Construction**
- V. Next Steps**



# Project Need and Description



# Project Location



## E. 25<sup>th</sup> Ave Railroad Crossing

- 92 Caltrain trains each weekday use this crossing, in addition to freight
- Lack of grade separation increases delays along corridor

# Project Elements

Construct Grade Separation (elevated rails, lowered roads) between Hillsdale Blvd and Highway 92

- Five bridges
- Approx. 1 mile of MSE Wall
- New elevated station at Hillsdale

# Elevated Track



# Grade Separation (25th Ave)





# East-West Connection (28th Ave)



# East-West Connection (31st Ave)



# Relocated Hillsdale Station





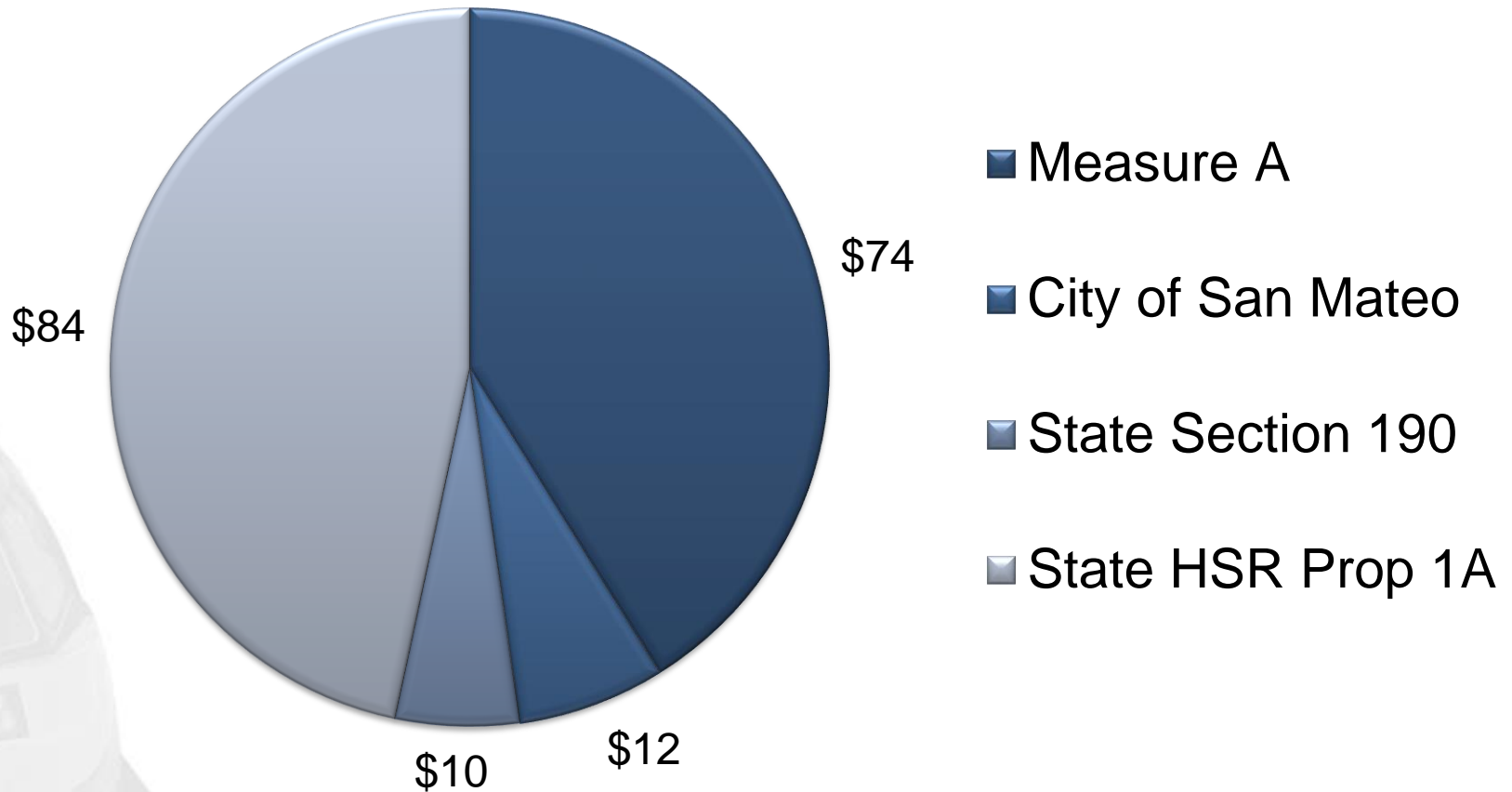
# Project Benefits



# Project Benefits

- Safe rail operations
- Fewer system-wide delays
- Improved traffic flow
- Enhanced E-W connectivity
- Improved pedestrian and motorist safety
- Support Caltrain electrification

# Project Funding, in Millions





# Schedule



# Schedule

| Activity              | Date  |
|-----------------------|---|
| MSE Wall Construction | Sep 2018 - Oct 2019   |
| Station Closed        | Sept 2019 – Feb. 2020   |
| Roads Completed       | Feb. 2020 – 28 <sup>th</sup> Ave<br>Aug. 2020 – 31 <sup>st</sup> Ave<br>April 2020 – 25 <sup>th</sup> Ave |
| Project Completed     | Oct. 2020   |

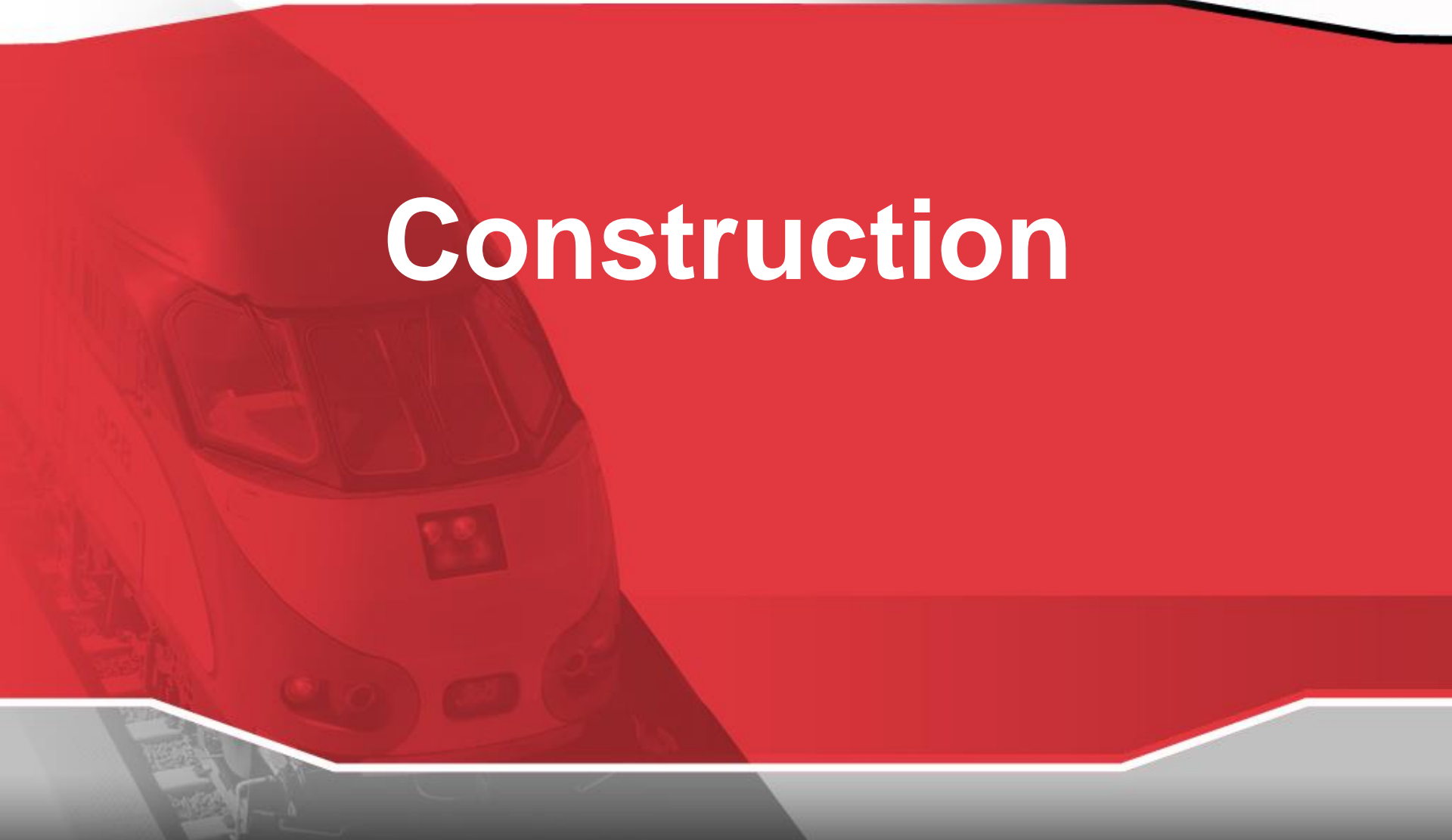


# Hillsdale Station Closure

- Enhanced train service provided at Belmont Station
- Enhanced Samtrans bus and shuttle service provided between Hillsdale and Belmont Stations



# Construction



# Project Updates

## Bridges

**Beresford Creek** – Complete

**25<sup>th</sup> Ave** – Abutments & Columns Complete

**28<sup>th</sup> Ave** – Abutments on going

**Pedestrian U/P** – Installed bridge girders

**31<sup>st</sup> Ave** – Ready to install TPFOC Protection

## Relocate Utilities:

- Third Party Utilities: On Going
- JPB Utilities: On Going

**MSE Wall construction** has begun

# 28<sup>th</sup> Ave Bridge



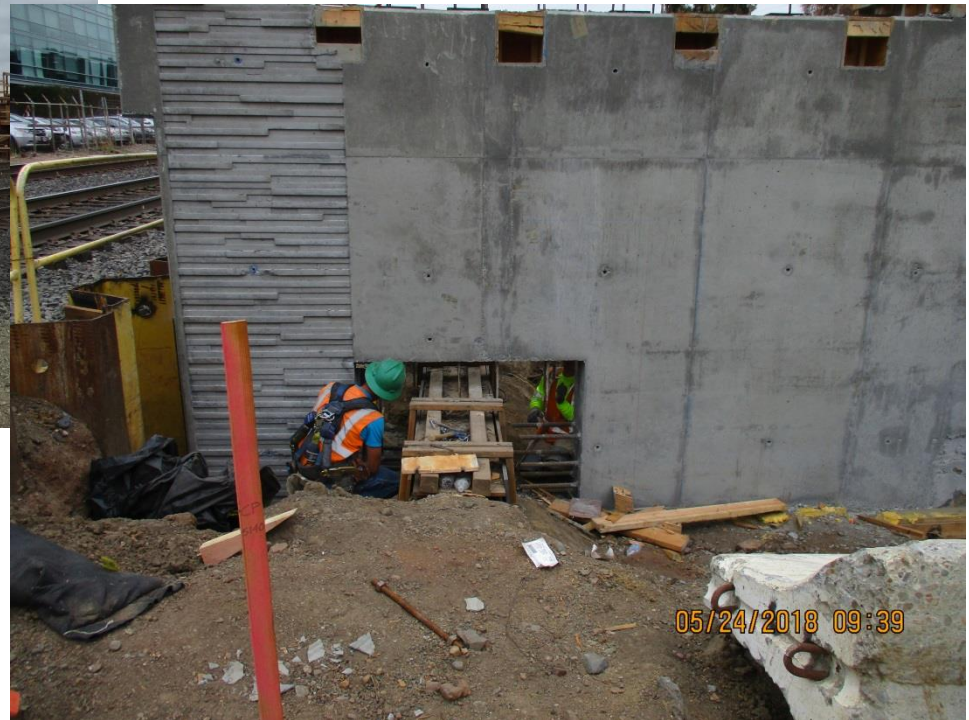
# 28<sup>th</sup> Ave Bridge



# 31<sup>st</sup> Ave Bridge



# Pedestrian Underpass Bridge



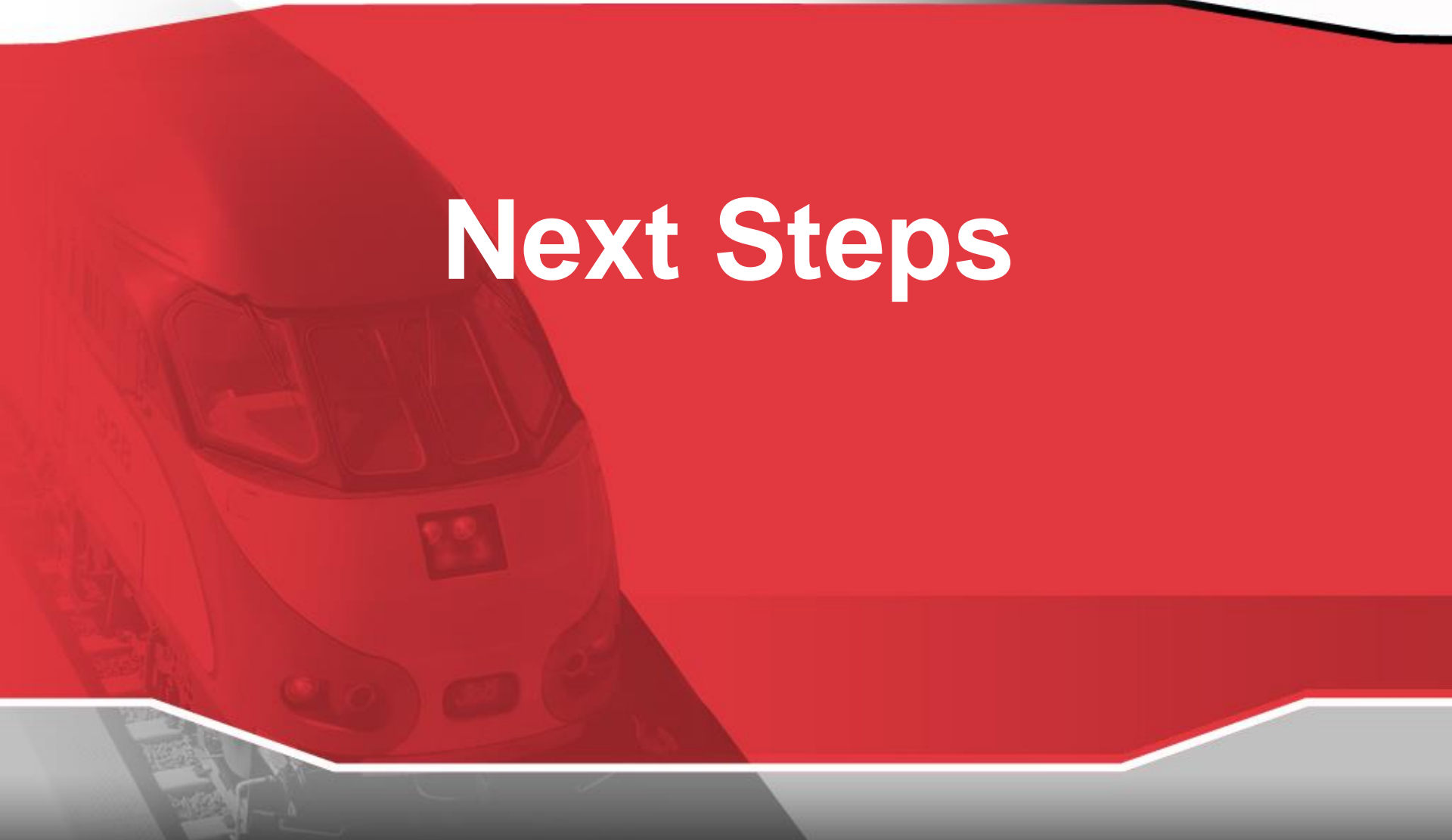
# PG&E Gas Line Relocation







# Next Steps



# Next Steps

- Finalize settlement of time and cost impacts related to the Fiber Optic delay
- Review project estimates
- Return to the JPB board with a recommendation
- Public outreach



# Questions

