



25th Avenue Grade Separation

Community Meeting
November 8, 2017

Agenda

- I. Overview**
- II. Project Description**
- III. Project Benefits**
- IV. Project Construction**
- V. Next Steps**
- VI. Questions**



Overview



Project Location



E. 25th Ave Railroad Crossing

- 92 Caltrain trains each weekday use this crossing, in addition to freight
- Lack of grade separation increases delays along corridor



Project Description



Project Elements

Construct Grade Separation (elevated rails, lowered roads) between Hillsdale Blvd and Highway 92

- Concrete bridge 25th & 28th Ave
- Steel bridge at 31st Ave
- Concrete retaining walls
- MSE walls

Project Elements Continued

- Reconstruct E. 25th Ave. sidewalks and roadway
- Relocate existing utilities
- Relocate Hillside Station and provide station access and parking
- Construct new East-West connections at 28th and 31st Avenues

Elevated Track



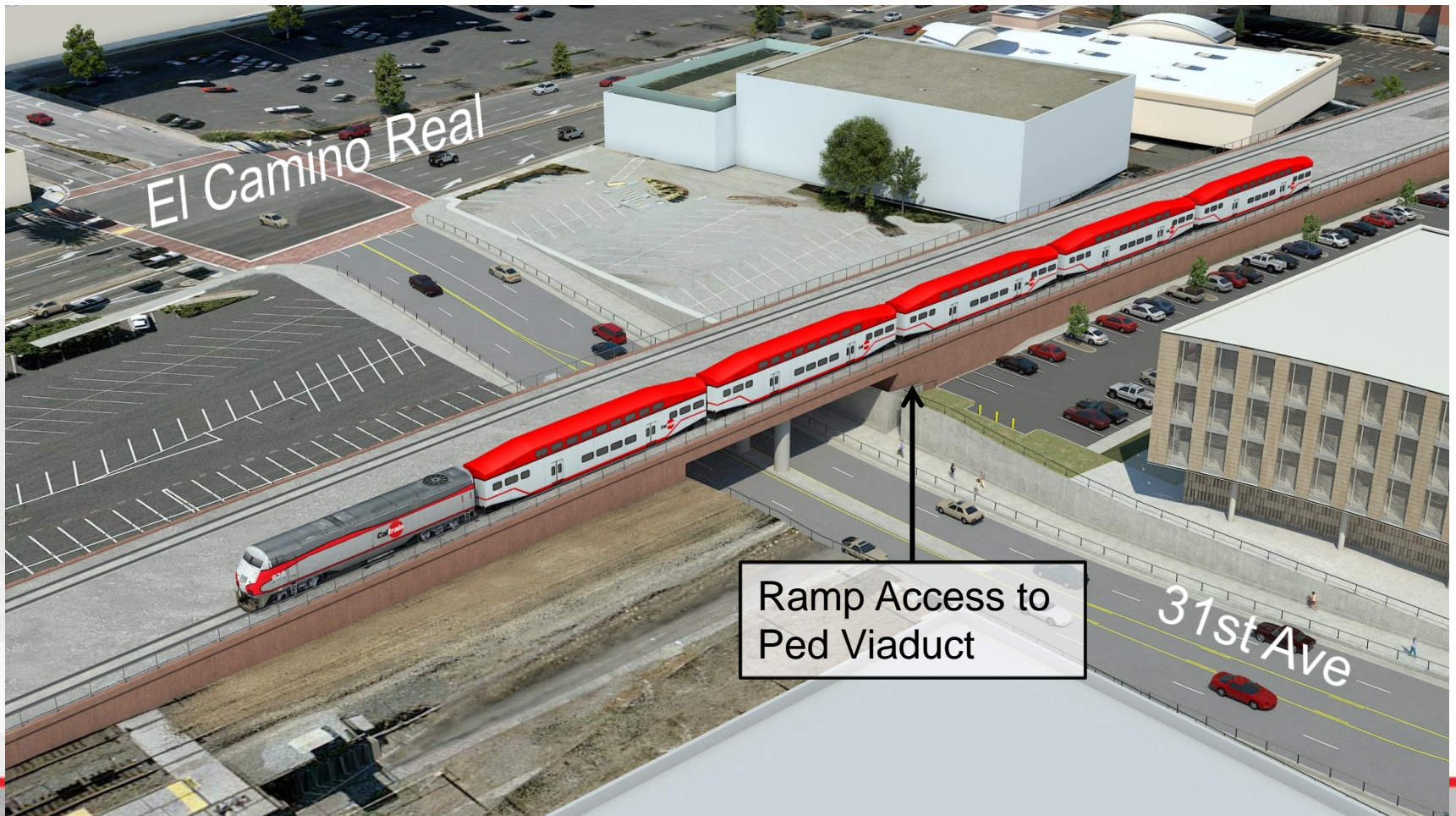
Grade Separation (25th Ave)



East-West Connection (28th Ave)



East-West Connection (31st Ave)



Relocated Hillsdale Station



Station Improvements – Mosaic Wall



Station Improvements



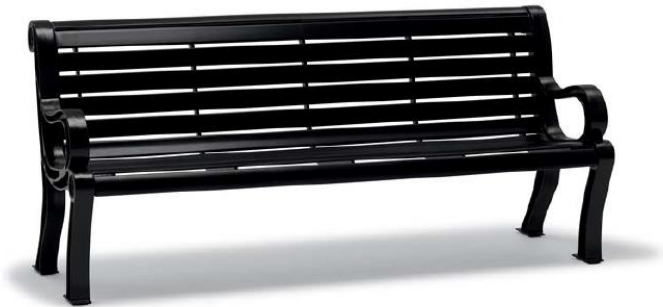
Stairway Entrance to Platform

Station Improvements - Platform



New Station Platform,
Shelters, Lights

Station Improvements - Furnishings

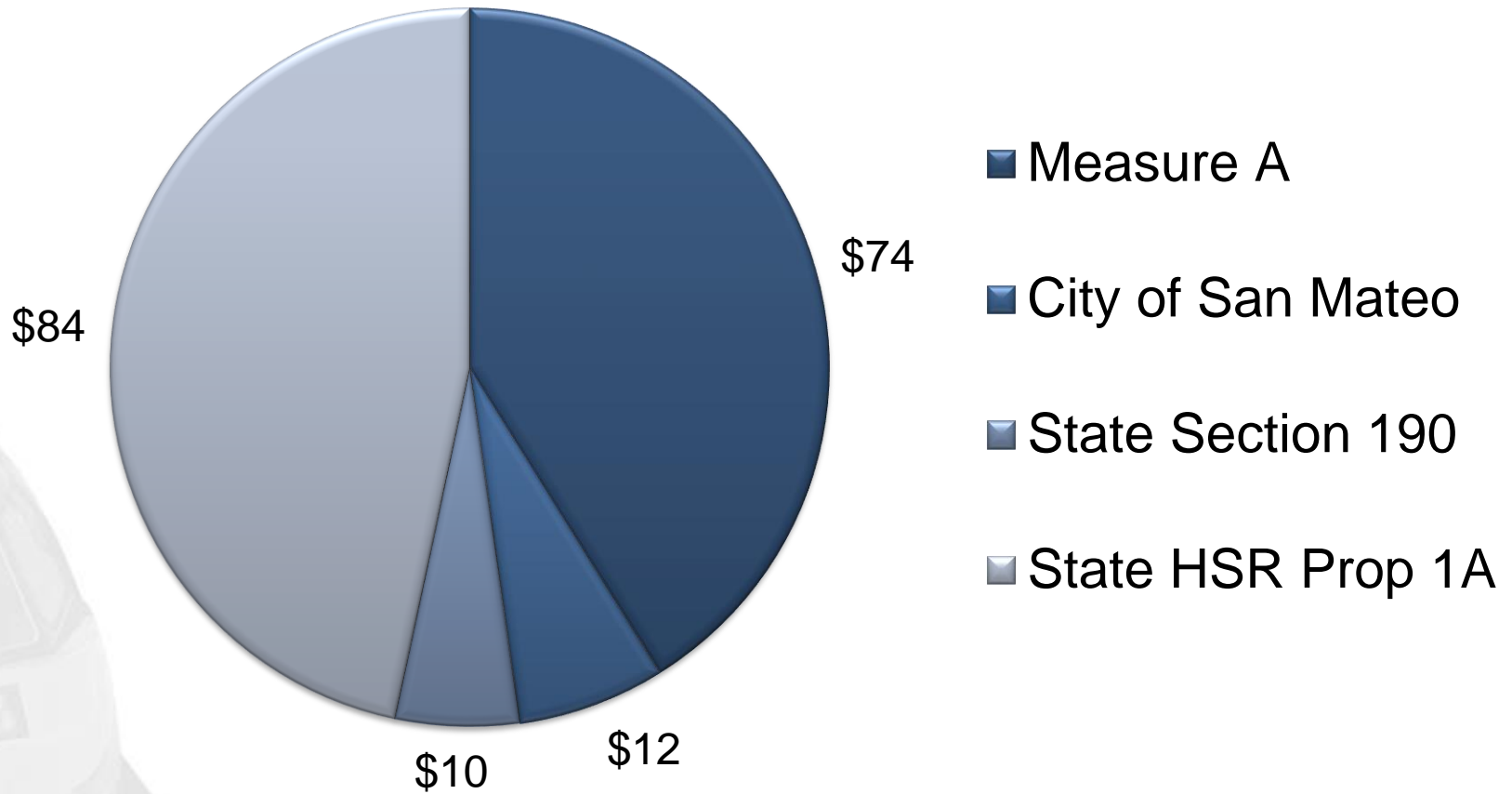


STANLEY™ Create a life.
Product name for reference. Visit STANLEY.COM for details.

New Hillsdale Station Access



Project Funding, in Millions





Project Benefits



Project Benefits

- Safe rail operations
- Fewer system-wide delays
- Improved traffic flow
- Improved pedestrian and motorist safety
- Facilitate Caltrain electrification which will reduce noise and vibration



Project Construction



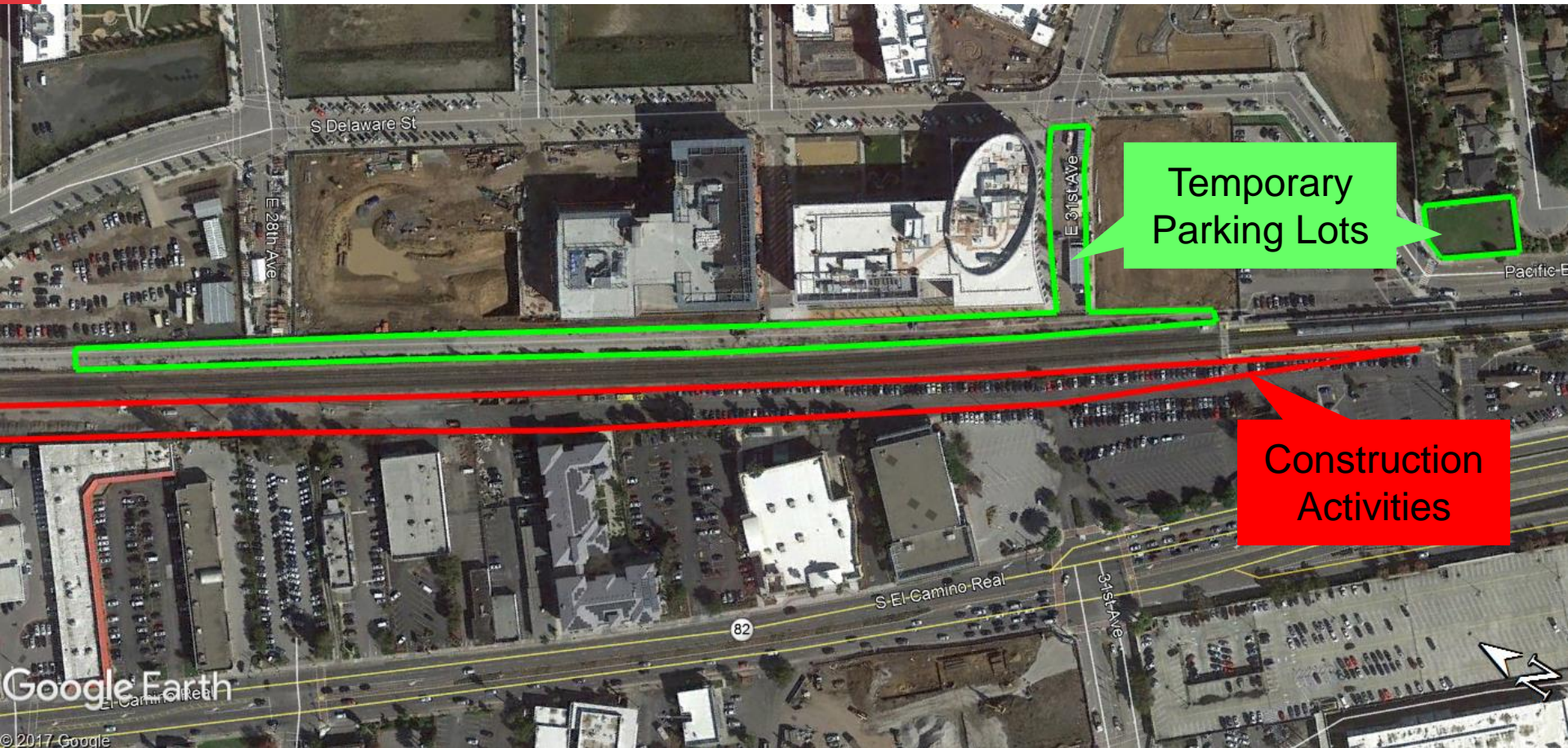
Schedule: Overview

Activity	Date
Mobilization	Sept 2017 - Oct 2017
Begin Construction	Oct 2017
Hillsdale Station Temp Parking (available for public use)	Oct 2017 – Dec 2018
Bridges and MSE Walls	Nov 2017 – Mar 2019
E. 25 th Ave. (lane closures)	Nov 2017 – Oct 2019
Bridge at E. 25th Ave (14FT clearance)	May 2018 – Oct 2019

Schedule: Overview cont.

Activity	Date
Station Closed	Dec 2018 – May 2019
Road Completed – 28 th Ave	May 2019
E. 25 th Ave. Closure (full)	Oct 2019 – Dec 2019
Roads Completed	Oct 2019 – 31 st Ave Dec 2019 – 25 th Ave
Project Completed	Jan 2020

Existing Hillsdale Station Temporary Parking Lot



Temporary
Parking Lots

Construction
Activities

Hillsdale Station Closure

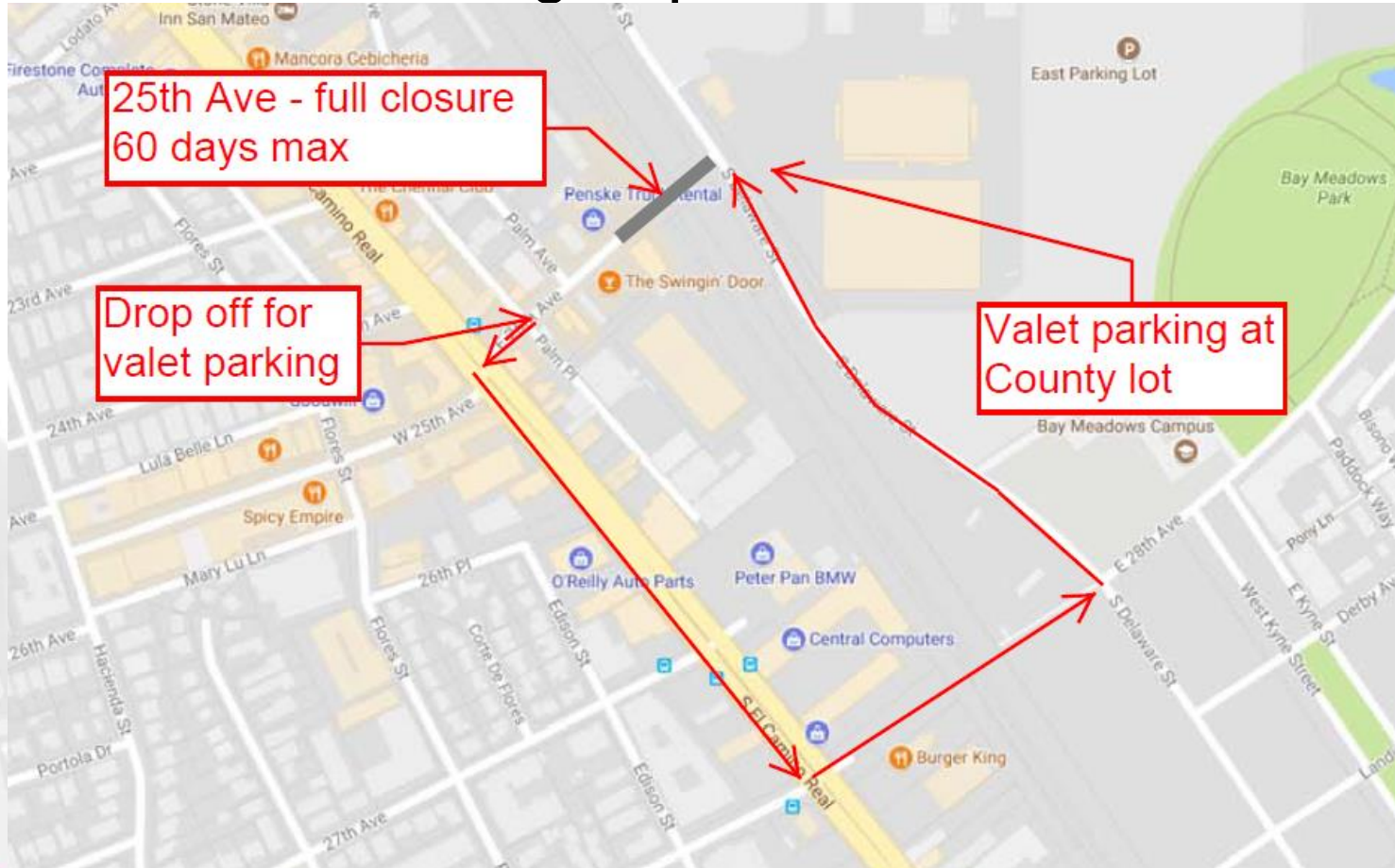
- Enhanced train service provided at Belmont Station
- Enhanced Samtrans bus and shuttle service provided between Hillsdale and Belmont Stations

Hillsdale Station Closure

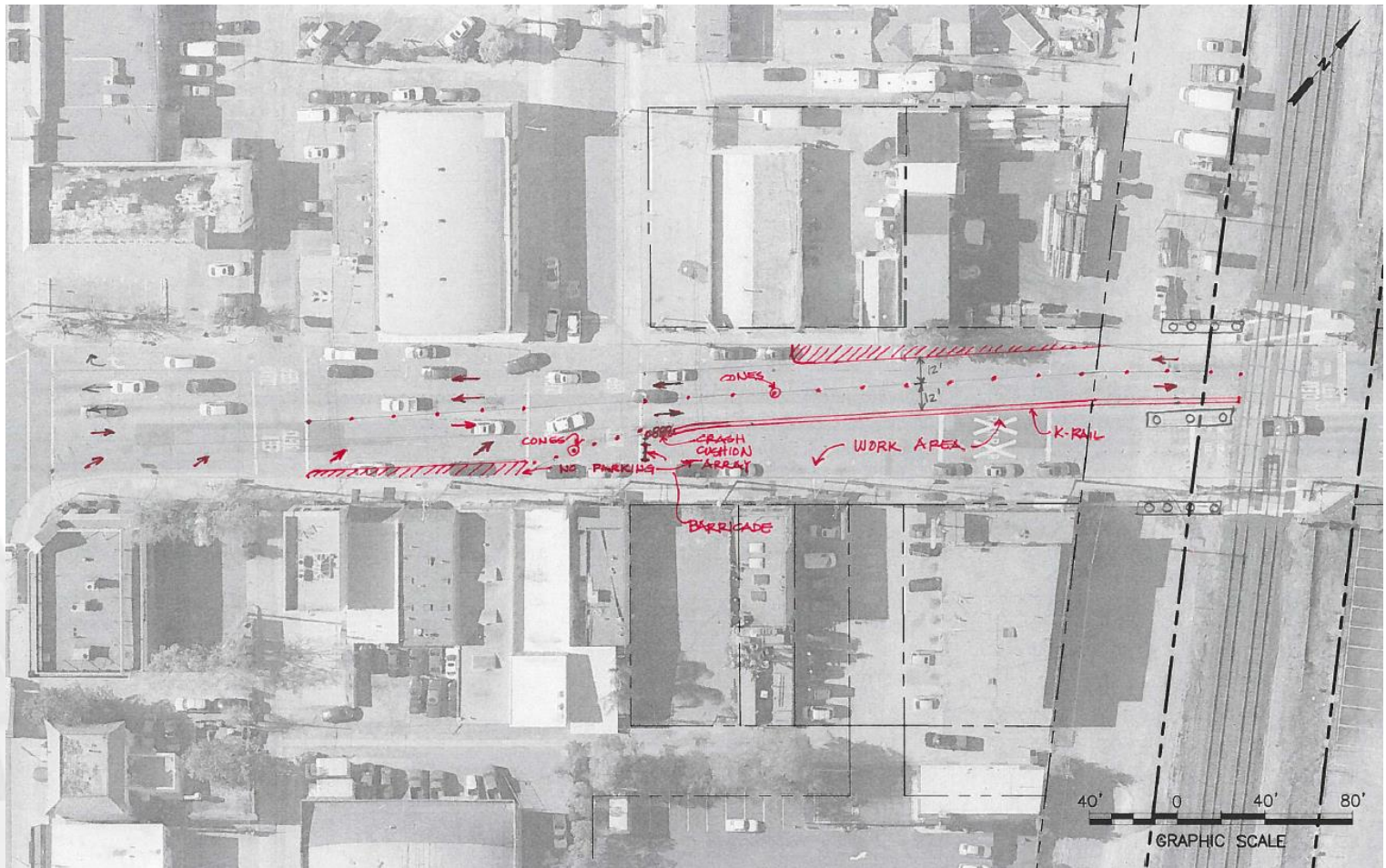
- Passengers who drive, get dropped off or use transit → use Belmont Station
- Passengers who walk to Hillsdale → take Samtrans bus (ECR Line) or shuttle to Belmont Station
 - Shuttle schedule will match enhanced train schedule
 - Shuttle pick-up location at east triangular lot

Construction Impacts/Mitigation

Traffic and Parking Impacts at 25th Ave



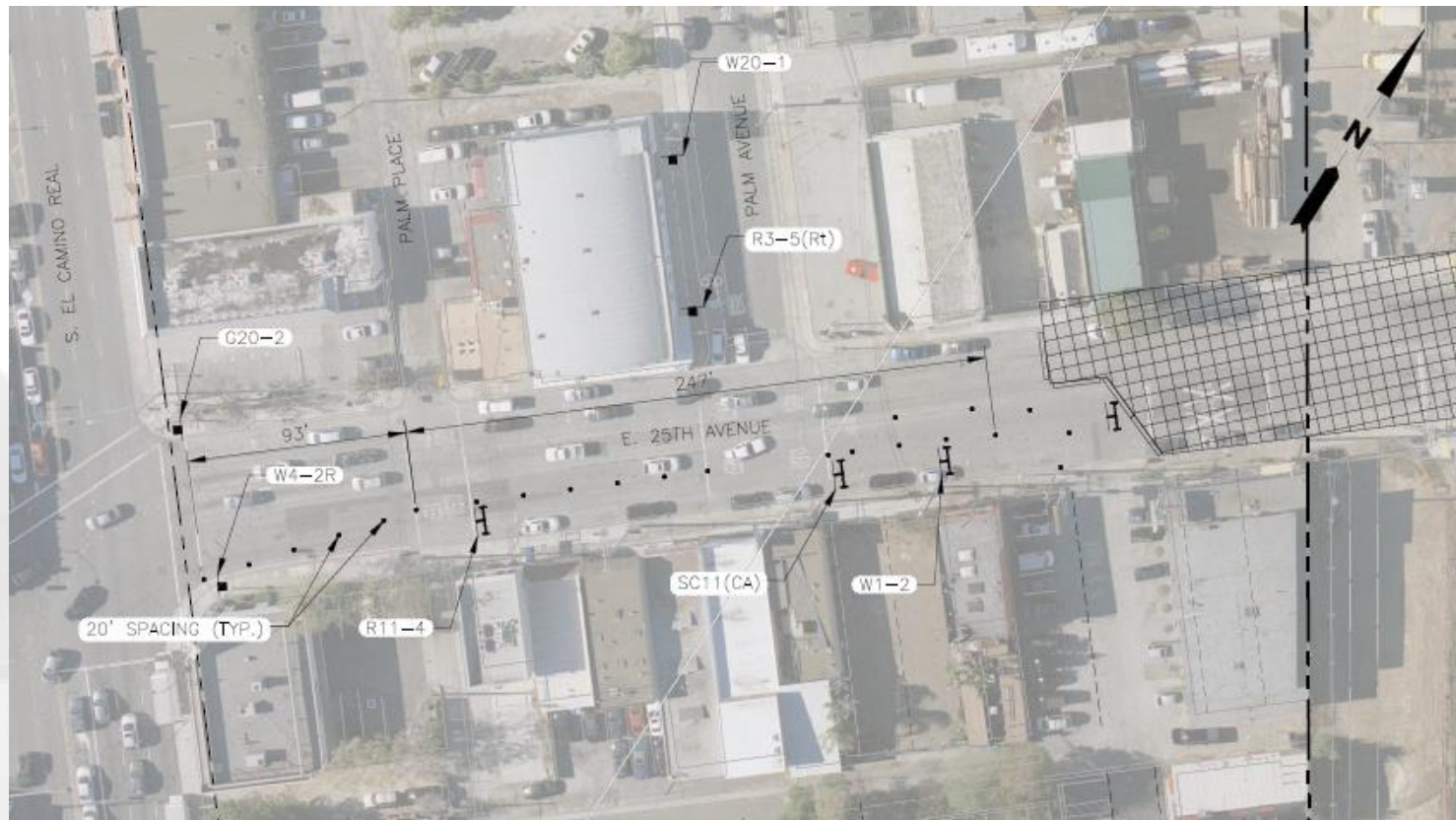
Example Lane Closure: 25th Ave



Construction Impacts/Mitigation

Traffic and Parking Impacts at 25th Ave

Full closure during reconstruction and lowering road – 60 Days Max



Construction Impacts/Mitigation

Relocate Utilities (work done by utilities)

- Protect facilities in place where possible
- Bore new facilities where feasible

Potential Impacts during Construction

Noise and Vibration Impacts:

- Temporary: Only during construction
- Construction equipment and procedures selected to monitor noise and vibration impacts
- Noise monitoring station at Peninsula Station (2901 ECR)

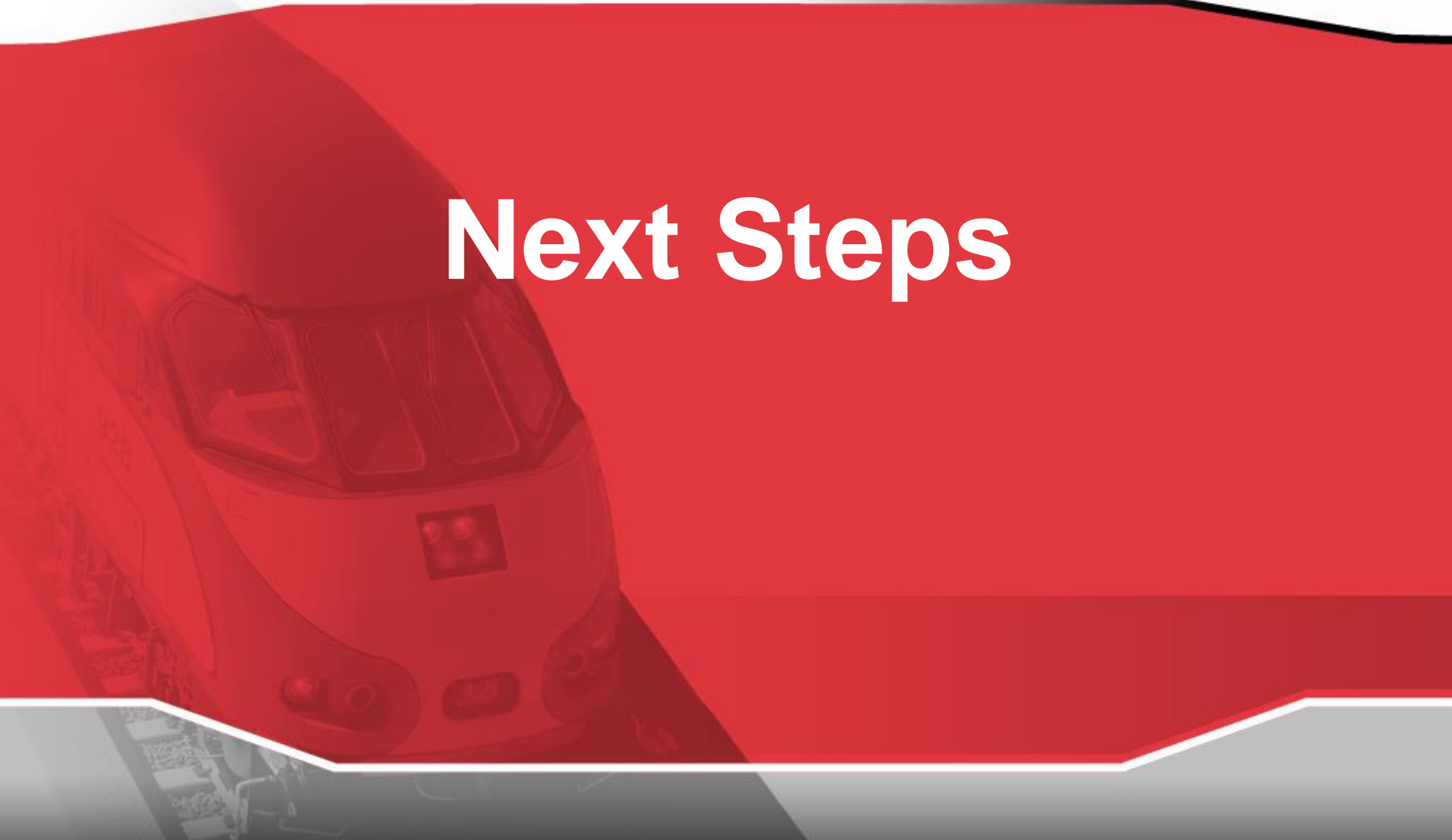


Work Hours

- Majority of construction activities will take place Mon-Fri during the day
- Certain construction activities require work to be completed at night or on weekends when there is reduced or no revenue train service
- JPB will notify community in advance of nighttime and weekend work



Next Steps



Construction Notices

25th Avenue Grade Separation Project

Dear Caltrain Neighbor,

Please join us for a community meeting regarding the 25th Avenue Grade Separation Project. Caltrain, in cooperation with the City of San Mateo, will raise the tracks and slightly lower the road (grade separate) at 25th Avenue in San Mateo. This will improve safety for both motorists and pedestrians, and it will reduce local traffic congestion in San Mateo. In addition, the project will provide an opportunity to complete east-west street connections at 28th and 31st Avenues. As part of the project improvements, Caltrain will build a new elevated Hillsdale Station located at 28th Avenue. The new station will offer updated amenities and will allow for better safety and reduced traffic.

Meeting Information

Tuesday, April 11, 2017 from 6:30 p.m. to 7:30 p.m.
First Presbyterian Church, Lighthouse Room
194 W 25th Ave, San Mateo, CA 94403
Entrance at back of building on Lula Belle Ln.
Parking available in church lot at 25th & Hacienda St.

The meeting will include a presentation detailing the project scope and tentative construction schedule. For more information on the project, please visit www.caltrain.com/25thGS.

3.22.17

Example of mailed notice

Public Outreach & Community Engagement

- Project website:
www.caltrain.com/25thGS
- Construction Outreach Hotline: 650.508.7726
- Email: SMGradeSep@Caltrain.com
- Regular Updates and Public Meetings
 - Prior to Station Closure
 - Prior to Street Closure

- Schedules
- Stations
- Fares
- Rider Information
- Projects & Plans**
 - Projects
 - Plans
 - Caltrain Modernization
- About Caltrain



+ Print Text Size

> caltrain.com > Projects & Plans > Projects > Caltrain Capital Program > 25th Avenue Grade Separation

25th Avenue Grade Separation

Sign Up for Project Updates



Rendering of Completed 25th Avenue Grade Separation Project

Subscribe

You can now receive Caltrain notifications via e-mail!
Find out more [HERE](#)

- ### Highlights
- Weekday Timetable
 - Weekend Timetable
 - Special Events
 - Electrification

Social

Social Media



Contact

Construction Information	Service Information
<p data-bbox="278 596 853 716">Office of Public Affairs Phone: 650.508.7726</p>	<p data-bbox="1064 596 1837 716">Customer Service Department Phone: 800.660.4287</p>
<p data-bbox="653 839 1335 1011">1250 San Carlos Avenue PO Box 3006 San Carlos, CA 94040-1306</p>	
<p data-bbox="668 1082 1319 1129">www.caltrain.com/25thGS</p>	



Questions

