



25th Avenue Grade Separation Project Update

SMCTA CAC
March 31, 2020

Agenda

- I. Project Overview
- II. Progress Update
- III. Financial Status
- IV. Update on Temporary Station Closure

The Project



Project Overview

Project Elements

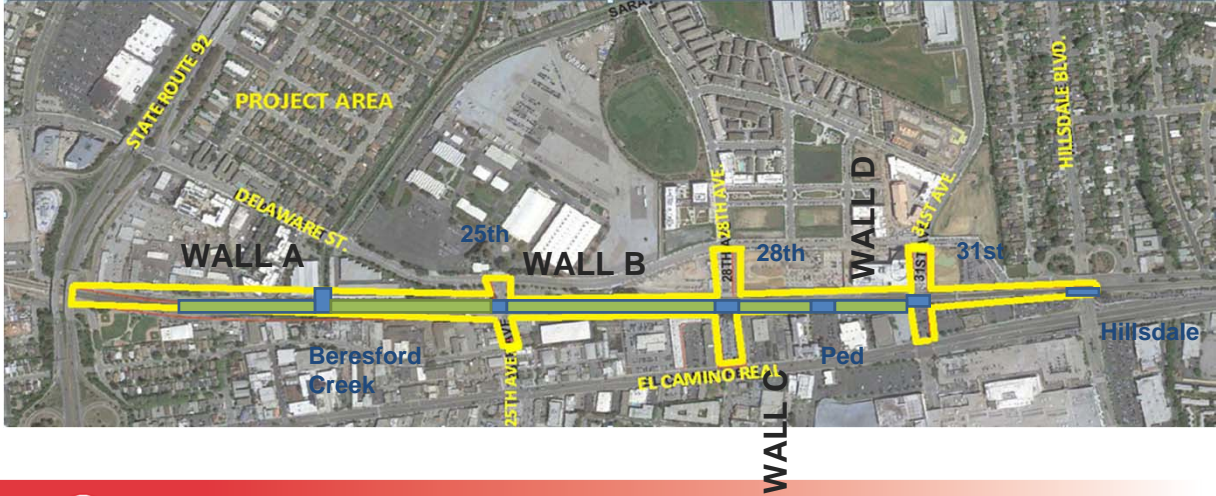
- Three grade separations: 25th, 28th, 31st Avenues
- Bike/pedestrian underpass
- Relocated parking track
- New Hillsdale Station (located closer to 28th Avenue)

Overall Benefits

- Pedestrian, cyclist, and motorist safety
- Safe rail operations and fewer system-wide delays
- Improved traffic flow and enhanced east-west connectivity
- Reduced train horn noise
- Station with centerboard platform & updated amenities



Project Location



Relocated Parking Track



Project Rendering of Elevated Track



Progress Update



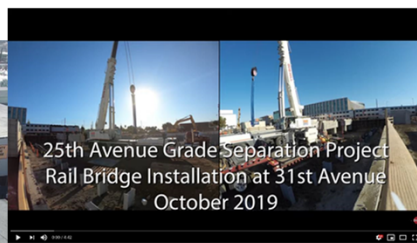
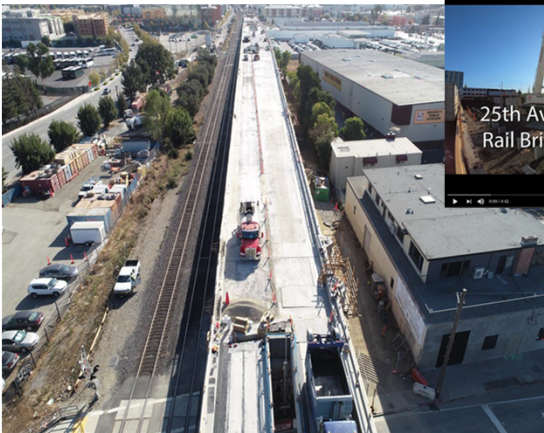
Since Last Update...

- Completed retaining walls
- Installed all bridges
- Constructed skeleton track
- Constructed 28th/31st Avenues west side
- Began New Station Construction



9

Completed Walls & Bridges



Bridge Installation Timelapses at www.caltrain.com/25thGS/photo

New Track & Roads (West Side)



New Station Under Construction

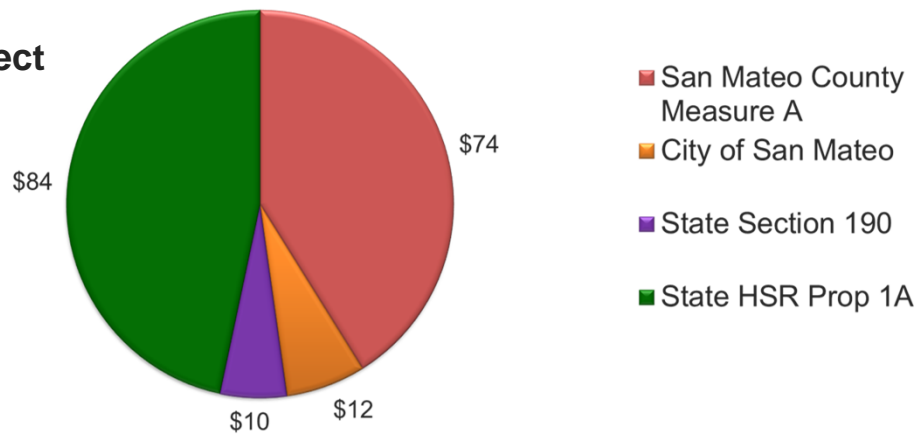


Project Funding



Project Funding, in Millions

\$ 180 Project



Update on Temporary Hillsdale Station Closure



Hillsdale Station Closure: **May 16, 2020**

- Duration: Up to 6 months
- Closure required to:
 - Transition ground-level tracks to elevated tracks
 - Create east-west connection at 28th Avenue
 - Build new Hillsdale Station (closer to 28th Avenue)
- Caltrain will continue overall passenger service.
 - COVID-19 has created a highly fluid situation with respect to service provision



Development of Rider Closure Plan

- Analyze Survey Data (summer 2019) and Annual Counts
- Reviewed train timetables and bus / shuttle frequency
- Analyzed rider bus / shuttle needs and capacity
- Reviewed public feedback
 - Over 4,000 touchpoints, ~2,050 provided feedback
 - Sources: Council Meetings, City Staff, neighborhood associations, office tenants, Nueva School, project email, 20+ public meetings, virtual town hall
- Focused on rider experience during the closure
- Acknowledged challenges



17

Rider Closure Plan

- All plans are subject to change based on COVID-19 service changes and funding
- All Hillsdale Caltrain service switches to Belmont
- Free parking at Belmont Station
- Free SamTrans [ECR](#) bus service between Belmont and San Mateo Stations
- Free SamTrans Route [292](#) bus service between Hillsdale Shopping Center and San Mateo Station
- Free SamTrans bus service on all routes (except FCX) for riders with the Caltrain Clipper monthly pass 2+ zones
- Free peak period Belmont/Hillsdale Shuttle service (if available)
- Caltrain will coordinate with existing public and private shuttles serving the two stations



18

Rider & Community Communication

Rider Communication

- Signage: electronic, A-frames, info boards, banner
- Take-ones, parking lot windshield drops
- Ambassadors at stations, conductor announcements, customer support
- Radio and print ads

Community Communication

- Newsletters, mailers to community, email distribution list
- Regular communication to electeds and organizations
- Social Media, dedicated webpage www.caltrain.com/HillsdaleClosure
- Virtual Town Hall: April 9, 2020



19

Contact Information

Hillsdale Closure Rider Information

Website: www.caltrain.com/HillsdaleClosure

Phone: 1-800-660-4287

25th Ave. Grade Separation Project Information

Website: www.caltrain.com/25thGS

SMGradeSep@caltrain.com

