



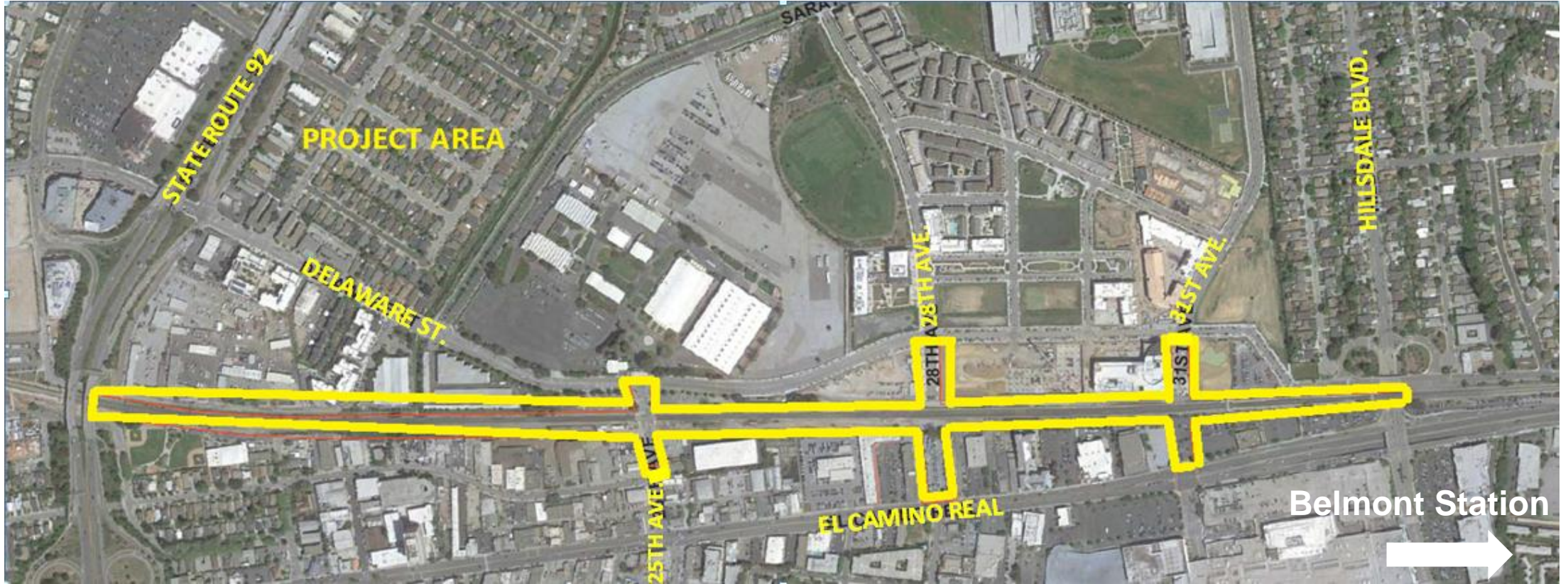
25th Avenue Grade Separation Project
Belmont Chamber of Commerce Annual Meeting
July 11, 2019

Agenda

- I. Project Description
- II. Project Construction
- III. Station Closure & Outreach
- IV. Questions

Project Description

Project Location



Project Overview

Project Need

- 92 Caltrain trains each weekday use the crossing, in addition to freight
- No. 8 on California Public Utilities Commission railroad crossing safety priority list
- Lack of grade separation increases delays along corridor

Project Elements

- Construct grade separation (elevated rail, lowered road) at 25th Avenue
- New grade separated, east-west connections at 28th and 31st Avenues
- MSE wall (approximately 1 mile)
- 5 bridges
- New Hillsdale Station with updated amenities

Project Benefits

- Improved pedestrian and motorist safety
- Improved traffic flow
- Safe rail operations
- Fewer system-wide delays
- Improve customer experience with new station
- Support Caltrain electrification, which will reduce noise and vibration
- Enhanced east-west connectivity

Elevated Track



Grade Separations



New Hillside Station



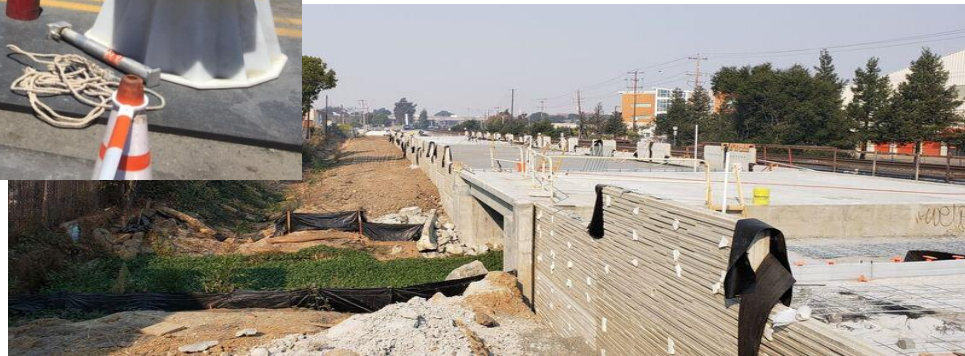
Project Construction

Schedule Overview



Activity	Date
Start of Construction	October 2017
Hillsdale Station Closure (service to Belmont Station)	December 2019 to June 2020
28 th Ave. Complete	June 2020
25 th Ave. Closed	September 2020
25 th Ave. Complete	November 2020
31 st Ave. Complete	January 2021
Project Complete	January 2021

Construction Occurring



Station Closure & Outreach

Hillsdale Station Closure

Service

- Belmont Station to receive additional train service
- Coordination with public and private shuttles
- Enhanced shuttle service between Belmont and Hillsdale Stations during commute hours
- Samtrans bus available between Hillsdale and Belmont Stations at no additional charge for those transferring to/from Caltrain (bus arrives every 12-15 min. on El Camino Real on weekdays)

Outreach

Communication

- Notifications: Mailers to Belmont community (summer 2019 and winter 2019), social media, project distribution list
- Access maps and signage (at Hillsdale and Belmont Stations)
- Website

Community Meetings

- Virtual Town Hall on 7/31/19
- In-person meetings prior to closure and major milestones



Construction Notices

25th Avenue Grade Separation Project

Dear Caltrain Neighbor,

Starting in mid-October 2017, Caltrain will begin construction on the 25th Avenue Grade Separation Project. Caltrain, in cooperation with the City of San Mateo, will raise the tracks and slightly lower the road (grade separate) at E. 25th Avenue in San Mateo. This will improve safety for both motorists and pedestrians, and it will reduce local traffic congestion in San Mateo. In addition, the project will provide an opportunity to complete east-west street connections at 28th and 31st Avenues. As part of the project improvements, Caltrain will build a new elevated Hillsdale Station located at E. 28th Avenue. The new station will offer updated amenities and will allow for better safety and reduced traffic.

The first phase of construction includes the clearing of shrubbery and potholing. Crews will begin to build the bridges and walls needed for the grade separation. Starting October 23, there will be a partial parking lot closure at Hillsdale Station, with temporary parking available at 31st Ave. There will also be periodic partial lane closures and parking restrictions on E. 25th Avenue (all businesses on E. 25th Avenue will remain open for business as usual). In order to maintain regular train service, some activities will be conducted during nights and weekends, outside of normal train service hours. Neighbors may experience construction noise and light during these times. For those who ride Caltrain, there may be some single tracking for a period of time at Hillsdale Station. We apologize for any inconvenience this may cause.

As key milestones approach we will continue to send out notifications. Caltrain also offers a weekly notice for those interested in the latest construction activities. For more information on the project and to sign-up for the weekly construction notice, please visit www.caltrain.com/25thGS. For questions about the project, please call the Caltrain Construction Hotline at 650.508.7726 or email SMGradeSep@caltrain.com.

10.6.17

25th Avenue Grade Separation Project: Upcoming Night Work

Dear Caltrain Neighbor,

As part of the 25th Avenue Grade Separation Project, crews will begin installing temporary shoring at 25th Avenue in the Caltrain right-of-way in mid-February. Sheet piles, used for temporary shoring, are a retention system where steel sheets are installed with a vibratory hammer to create a support wall. In an effort to mitigate the noise, crews will pre-drill prior to inserting the sheets. While the majority of work is conducted during the day, some night work is required due to the activity's proximity to the railroad tracks. To start construction earlier in the evening, Caltrain plans to single track its trains when night work is scheduled.

Partial sidewalk and lane closures on E. 25th Avenue (between El Camino Real and S. Delaware) are also occurring as part of the project and will be intermittent for up to four months. All businesses along E. 25th Avenue will remain open during construction. Please note the construction schedule is subject to change. We apologize for any inconvenience the construction may cause.

The 25th Avenue Grade Separation Project will raise the tracks and slightly lower the road (grade separate) at E. 25th Avenue in San Mateo. Caltrain, in cooperation with the City of San Mateo, is implementing the project to improve safety for both motorists and pedestrians. In addition, the project provides an opportunity to complete east-west street connections at 28th and 31st Avenues. The project will reduce local traffic congestion and horn noise, and as part of the project improvements, Caltrain will build a new elevated Hillsdale Station with updated amenities at E. 28th Avenue, allowing for better safety and reduced traffic.

Caltrain offers a weekly notice for those interested in the latest construction activities. To sign-up for the weekly construction notice or for more information visit www.caltrain.com/25thGS. For questions about the project, please call the Caltrain Construction Hotline at 650.508.7726 or email SMGradeSep@caltrain.com.

1.31.18

Proyecto de Separación de Niveles en 25th Avenue: Próximamente se realizarán obras nocturnas

Estimado vecino de Caltrain:

Como parte del Proyecto de Separación de Niveles en 25th Avenue, a mediados de febrero los equipos de trabajo empezarán a instalar puntales temporales en 25th Avenue en el derecho de paso de Caltrain. Las tablestacas, utilizadas para apuntalar temporalmente, son un sistema de retención en el que láminas de acero son instaladas con un martillo vibratorio con el fin de crear un muro de retención. Con el propósito de reducir el ruido, los equipos de trabajo realizarán perforaciones preliminares antes de introducir las tablestacas. Aunque la mayor parte de la obra se llevará a cabo durante el día, es necesario realizar algún trabajo nocturno debido a la proximidad de la obra a las vías del tren. Para empezar las obras de construcción más temprano por la noche, Caltrain planea colocar a sus trenes en una sola vía cuando se haya programado trabajo nocturno.

También se llevará a cabo el cierre parcial en las aceras de E. 25th Avenue (entre El Camino Real and S. Delaware) como parte del proyecto, lo cual se hará intermitentemente durante hasta cuatro meses. Todos los negocios ubicados a lo largo de E. 25th Avenue permanecerán abiertos durante las obras. Por favor tome en cuenta que el calendario de construcción está sujeto a cambios. Le rogamos nos disculpe por cualquier molestia que las obras de construcción pudieran ocasionar.

El Proyecto de Separación de Niveles en 25th Avenue elevará las vías y reducirá ligeramente el nivel de la calle (separación de niveles) sobre E. 25th Street en San Mateo. Caltrain, en cooperación con la Ciudad de San Mateo, implementa este proyecto con el fin de mejorar la seguridad tanto de automovilistas como de peatones. Asimismo, este proyecto brinda la oportunidad de concluir conexiones de este a oeste en 28th Avenue y 31st Avenue. El proyecto reducirá la congestión del tráfico local y el ruido de servicios actualizados en E. 28th Avenue, lo que reforzará la seguridad y reducirá el tráfico.

Caltrain ofrece un aviso semanal a todas aquellas personas interesadas en las más recientes actividades de construcción. Si desea inscribirse para recibir el aviso semanal sobre la construcción o información adicional, visite www.caltrain.com/25thGS. Si tiene alguna pregunta acerca del proyecto, sírvase llamar a la Línea Directa de Construcción de Caltrain al 650.508.7726 o envíe un email a SMGradeSep@caltrain.com.

Para traducción llame al 1.800.660.4287
如需要翻譯請電 1.800.660.4287
คำศัพท์: 1.800.660.4287



Project Contact Information

Caltrain Customer Service: 1.800.660.4287

Email: SMGradeSep@Caltrain.com

Website: www.caltrain.com/25thGS



What's Next

What's Next

CalMod

CALTRAIN ELECTRIFICATION PROJECT

STATUS UPDATE | January 2018

MILESTONES

- 1999: Caltrain strategic plan makes electrification a priority
- 2015: Environmental Clearance
- 2016: Award Contract
- 2017: Groundbreaking
- 2019: First Electric Train Arrives
- 2021: Passenger Service with Electric Trains
- 2022: Additional Capacity Improvements

**Please keep in mind that testing and construction will overlap on each segment and be tested individually, prior to final system testing. Subject to change.*

KEY REGIONAL BENEFITS 2040

- GREENHOUSE GASES (ANNUAL): 176,000 METRIC TONS CO₂
- DIESEL TO ELECTRIC: LOWER FUEL COSTS
- TRAFFIC CONGESTION: 619,000 VEHICLE MILES
- 21% INCREASE DAILY RIDERSHIP
- \$2.5 BILLION ECONOMIC BENEFITS
- MORE SERVICE: MORE FREQUENT & FASTER TRIPS

FOR MORE INFORMATION

- www.calmod.org
- 650.399.9659
- Para traducción llame al 1.800.660.4287
- Project Outreach Office: 900a m. to 5:00p.m. 2121 S. El Camino Real, Bldg A, Ste A-100 San Mateo, CA 94403

Caltrain

Caltrain Electrification
CalMod.org

CALTRAIN BUSINESS PLAN

DEVELOPING A LONG-RANGE VISION FOR CALTRAIN

CITY OF BELMONT BOOKLET

MAY 2019

Caltrain

Caltrain Business Plan
Caltrain2040.org