

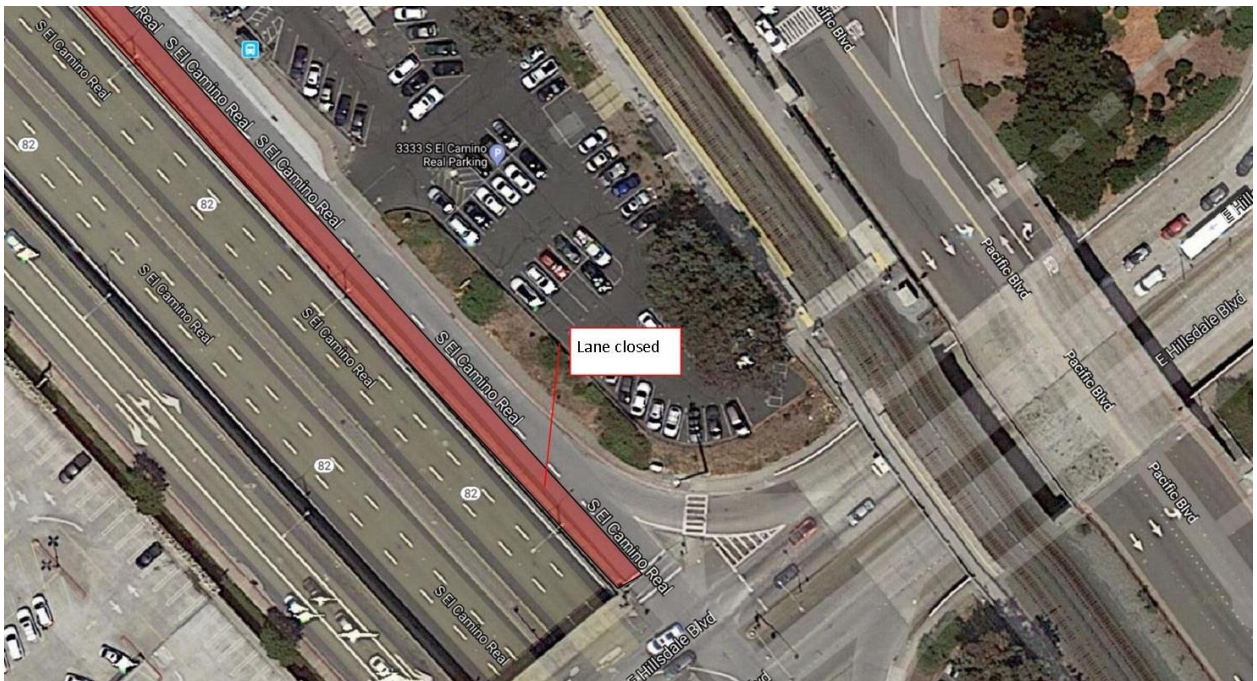


## S. El Camino Real Lane Closure (Between Hillsdale Boulevard & 31st Avenue)

Dear Caltrain Neighbor,

San Mateo's 25th Avenue Grade Separation Project is progressing towards its goals to improve safety, and reduce traffic congestion and train horn noise. On Monday, March 2, 2020 to Friday, March 6, the project will close one lane on S. El Camino Real between Hillsdale Boulevard and 31st Avenue from 9:00 a.m. to 3:00 p.m. (see map below). Please plan your route accordingly.

This necessary stage of the project will involve trucks bringing in materials from El Camino Real to 31st Avenue for paving the new retaining wall. Note unintended schedule changes do occur, and we thank you in advance for your patience.



### **About the 25<sup>th</sup> Avenue Grade Separation Project**

Caltrain, in cooperation with the City of San Mateo, is improving safety, traffic flow, and reducing train horn noise in the City. The project will separate the railroad tracks from the road at E. 25<sup>th</sup> Avenue, create two new east-west connections at 28th and 31st Avenues, and build a new Hillsdale Station with updated amenities to better serve the community.

### **How to Stay Informed**

Caltrain offers a weekly notice for those interested in the latest construction activities. To sign-up for the weekly construction notice or for more information visit [www.caltrain.com/25thgs](http://www.caltrain.com/25thgs). For questions about the project, please call the Caltrain Customer Service at 800.660.4287 or email [SMGradeSep@caltrain.com](mailto:SMGradeSep@caltrain.com).