



25th Avenue Grade Separation

April 11 2017

Agenda

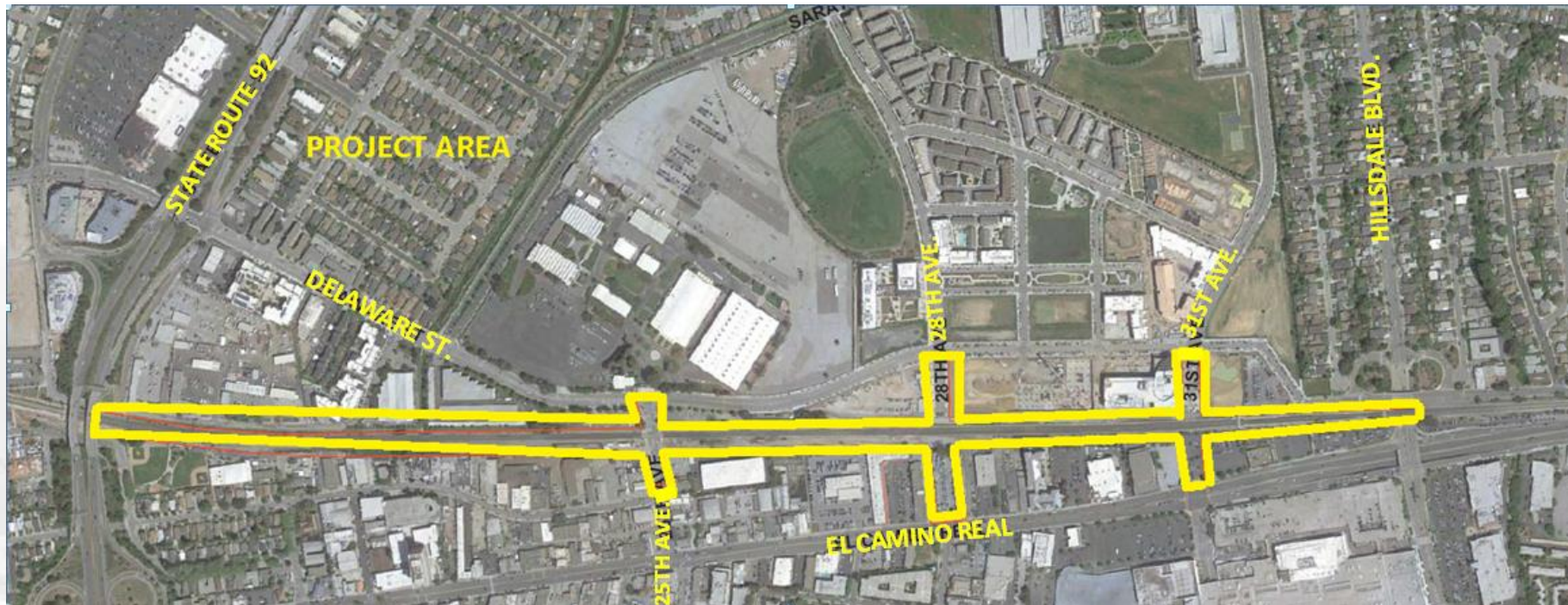
- I. Overview**
- II. Project Description**
- III. Project Benefits**
- IV. Project Construction (E. 25th Avenue)**
- V. Next Steps**
- VI. Questions**



Overview



Project Location



E. 25th Railroad Crossing

- 92 Caltrain trains each workday use this crossing
- Lack of grade separation increases delays along corridor



Project Description



Project Elements

Construct Grade Separation (elevated rails, lowered roads) between Hillsdale Blvd and Highway 92

- Concrete bridge at 25th & 28th Ave
- Steel bridge at 31st Ave
- Concrete retaining walls
- MSE walls

Project Elements Continued

- Reconstruct E. 25th Ave. sidewalks and road
- Relocate existing utilities
- Relocate Hillside Station and provide station access and parking
- Construct new East-West connections at 28th and 31st Avenues

Elevated Track



Relocated Hillsdale Station



East-West Connection (28th Ave)



Grade Separation (25th Ave)





Project Benefits



Project Benefits

- Safe rail operations
- Improved traffic flow
- Fewer system-wide delays
- Improved pedestrian and motorist safety
- Facilitate Caltrain electrification which will reduce noise and vibration



Project Construction



Schedule

| Activity | Date |
|---|------------------------|
| Mobilization | July 2017 - Oct. 2017 |
| Begin Construction | Fall 2017 |
| Bridge Foundations at E. 25th (lane closures) | Fall 2017 - Early 2018 |
| Bridge at E. 25th (14FT clearance) | Spring 2018 - End 2018 |

Schedule – Cont.

| Activity | Date |
|---|------------------------------|
| Station Closed | Early 2019 (5 months max) |
| Reconstruct Sidewalk | Summer 2019 |
| Reconstruct E. 25th Avenue (full street closure) | Summer 2019 (60 days max) |
| Project Completed | Early 2020 |

Construction Impacts/Mitigation

- Lane closures and temporary parking restrictions during construction of foundations and bridge abutments
- 14FT clearance at E. 25th > prioritize opening of 28th.

Construction Impacts/Mitigation

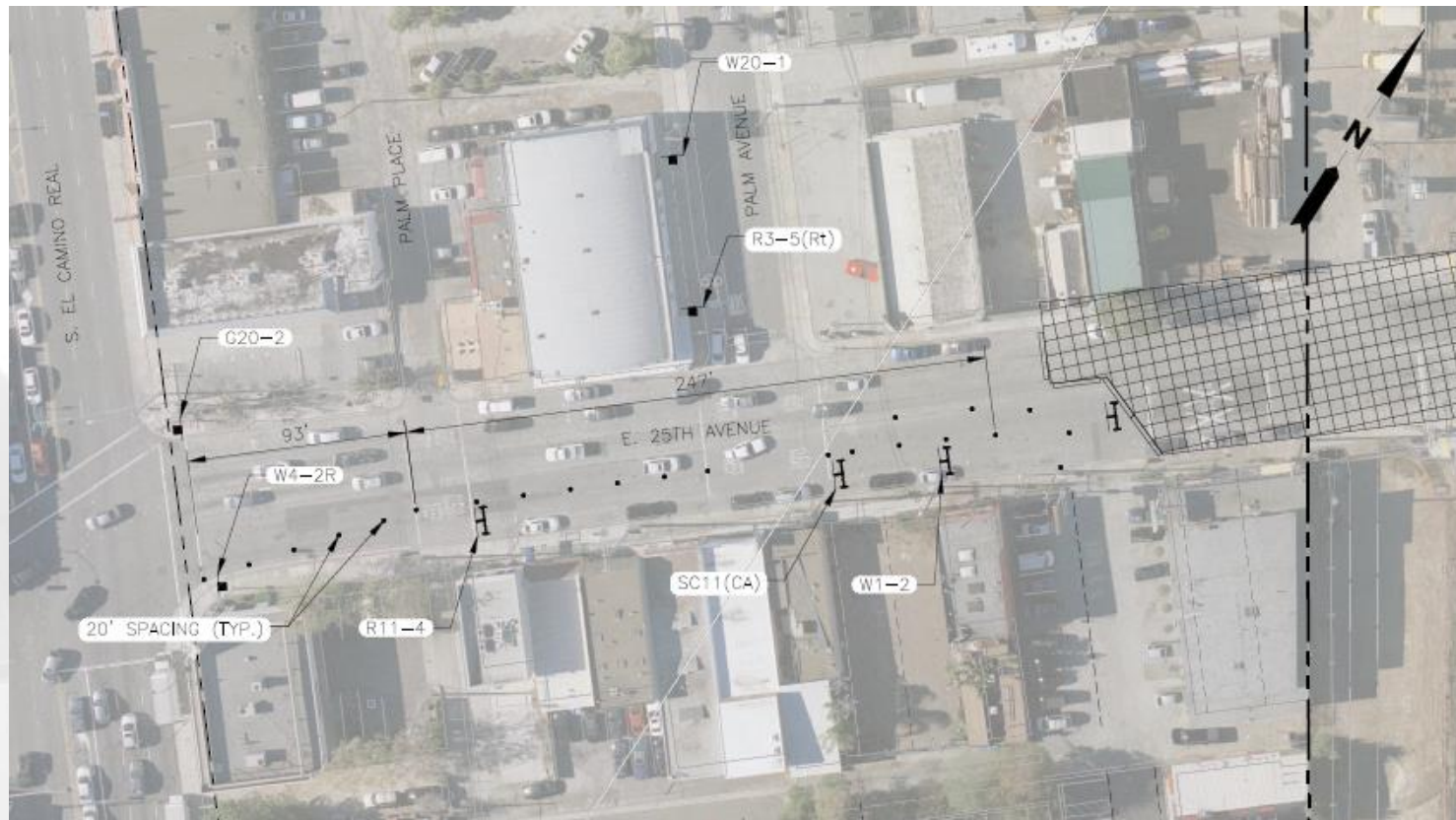
Reconstruct Sidewalk

- Work done at night
- Maintain access to businesses

Construction Impacts/Mitigation

Traffic and Parking Impacts

Full closure during reconstruction and lowering road – 60 Days Max



Construction Impacts/Mitigation

Relocate Utilities (work done by utilities)

- Protect facilities in place where possible
- Bore new facilities where feasible

Potential Impacts during Construction

Noise and Vibration Impacts:

- Temporary: **Only** during construction
- Construction equipment and procedures selected to ensure noise and vibration impact thresholds are not exceeded
- Additional noise mitigation measures will be implemented

Next Steps

- June 2017: Award Construction Contract
- Sept. 2017: More accurate schedule
- Fall 2017: Additional public meetings

Public Outreach & Community Engagement

- Dedicated Web page:
www.caltrain.com/25thGS
- Construction Outreach Hotline: 650.508.7726
- Regular Updates and Public Meetings
 - Pre-construction and during construction
 - Tied to critical milestones/project decisions
 - Mail/Email/Website

- Schedules
- Stations
- Fares
- Rider Information
- Projects & Plans**
 - Projects
 - Plans
 - Caltrain Modernization
- About Caltrain



> caltrain.com > Projects & Plans > Projects > Caltrain Capital Program > 25th Avenue Grade Separation

+ Print Text Size

25th Avenue Grade Separation

Sign Up for Project Updates



Rendering of Completed 25th Avenue Grade Separation Project

Subscribe

You can now receive Caltrain notifications via e-mail!
Find out more [HERE](#)

- ### Highlights
- Weekday Timetable
 - Weekend Timetable
 - Special Events
 - Electrification

Social

Social Media

Construction Notices

25th Avenue Grade Separation Project

Dear Caltrain Neighbor,

Please join us for a community meeting regarding the 25th Avenue Grade Separation Project. Caltrain, in cooperation with the City of San Mateo, will raise the tracks and slightly lower the road (grade separate) at 25th Avenue in San Mateo. This will improve safety for both motorists and pedestrians, and it will reduce local traffic congestion in San Mateo. In addition, the project will provide an opportunity to complete east-west street connections at 28th and 31st Avenues. As part of the project improvements, Caltrain will build a new elevated Hillsdale Station located at 28th Avenue. The new station will offer updated amenities and will allow for better safety and reduced traffic.

Meeting Information

Tuesday, April 11, 2017 from 6:30 p.m. to 7:30 p.m.
First Presbyterian Church, Lighthouse Room
194 W 25th Ave, San Mateo, CA 94403
Entrance at back of building on Lula Belle Ln.
Parking available in church lot at 25th & Hacienda St.

The meeting will include a presentation detailing the project scope and tentative construction schedule. For more information on the project, please visit www.caltrain.com/25thGS.

3.22.17

Example of mailed notice



Contact

| Construction Information | Service Information |
|--|--|
| <p data-bbox="280 596 853 716">Office of Public Affairs Phone: 650.508.7726</p> | <p data-bbox="1066 596 1839 716">Customer Service Department Phone: 800.660.4287</p> |
| <p data-bbox="653 839 1336 1011">1250 San Carlos Avenue PO Box 3006 San Carlos, CA 94040-1306</p> | |
| <p data-bbox="666 1082 1323 1130">www.caltrain.com/25thGS</p> | |



Questions

