



25th Avenue Grade Separation

April 19, 2017

Agenda

- I. Overview**
- II. Project Description**
- III. Project Benefits**
- IV. Project Construction**
- V. Next Steps**
- VI. Questions**



Overview



Project Location



E. 25th Railroad Crossing

- 92 Caltrain trains each workday use this crossing, in addition to freight
- Lack of grade separation increases delays along corridor



Project Description



Project Elements

Construct Grade Separation (elevated rails, lowered roads) between Hillsdale Blvd and Highway 92

- Concrete bridge 25th & 28th Ave
- Steel bridge at 31st Ave
- Concrete retaining walls
- MSE walls

Project Elements Continued

- Reconstruct E. 25th Ave. sidewalks and road
- Relocate existing utilities
- Relocate Hillsdale Station and provide station access and parking
- Construct new East-West connections at 28th and 31st Avenues

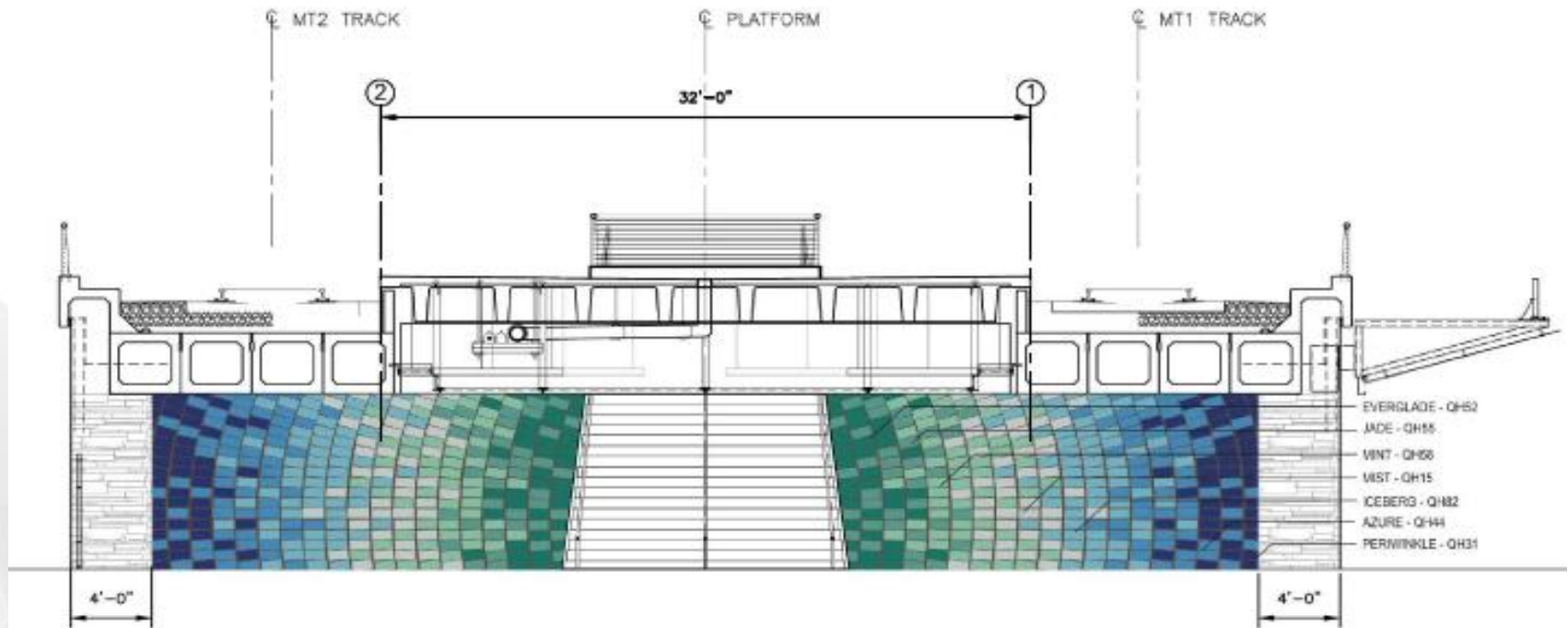
Elevated Track



Relocated Hillsdale Station



Art Wall at Hillsdale Station





East-West Connection (31st Ave)



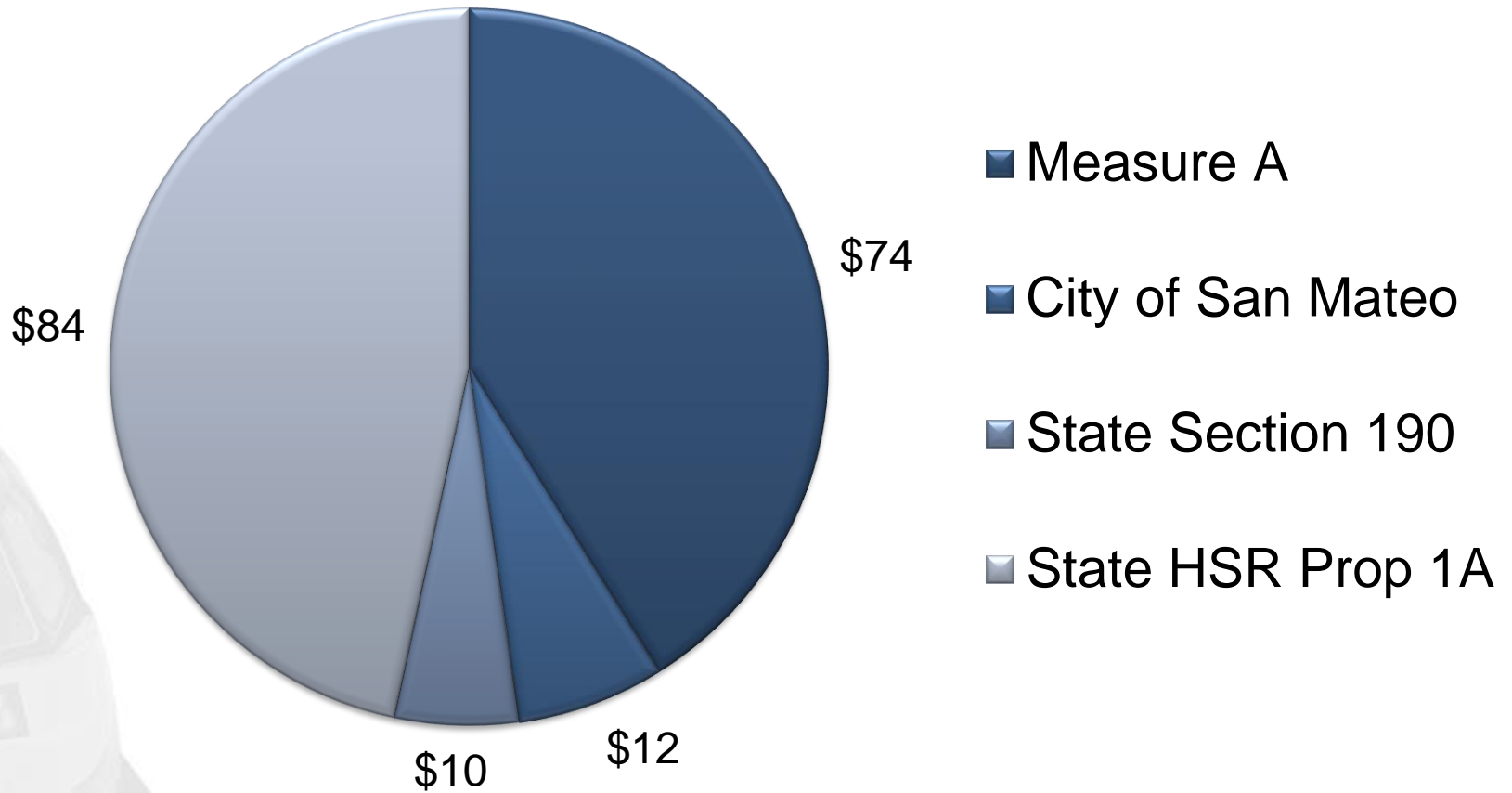
East-West Connection (28th Ave)



Grade Separation (25th Ave)



Project Funding





Project Benefits



Project Benefits

- Safe rail operations
- Fewer system-wide delays
- Improved traffic flow
- Improved pedestrian and motorist safety
- Facilitate Caltrain electrification which will reduce noise and vibration



Project Construction



Schedule

Activity	Date
Mobilization	July 2017 - Oct. 2017
Begin Construction	Fall 2017
Temp Parking at Hillsdale Station	Fall 2017
Bridges and MSE Walls	Fall 2017 - Early 2019
Bridge at E. 25th (14FT clearance)	Spring 2018 - End 2018

Schedule – Cont.

Activity	Date
Station Closed	Early 2019 (5 months max)
Roads Complete	Spring 2019 – 28 th Ave Summer 2019 – 31 st Ave Summer 2019 – 25 th Ave
Project Completed	Early 2020

Hillsdale Station Closure

- Hillsdale Station Closure
 - Enhanced train service provided at Belmont Station
 - Enhanced Samtrans bus and shuttle service provided between Hillsdale and Belmont

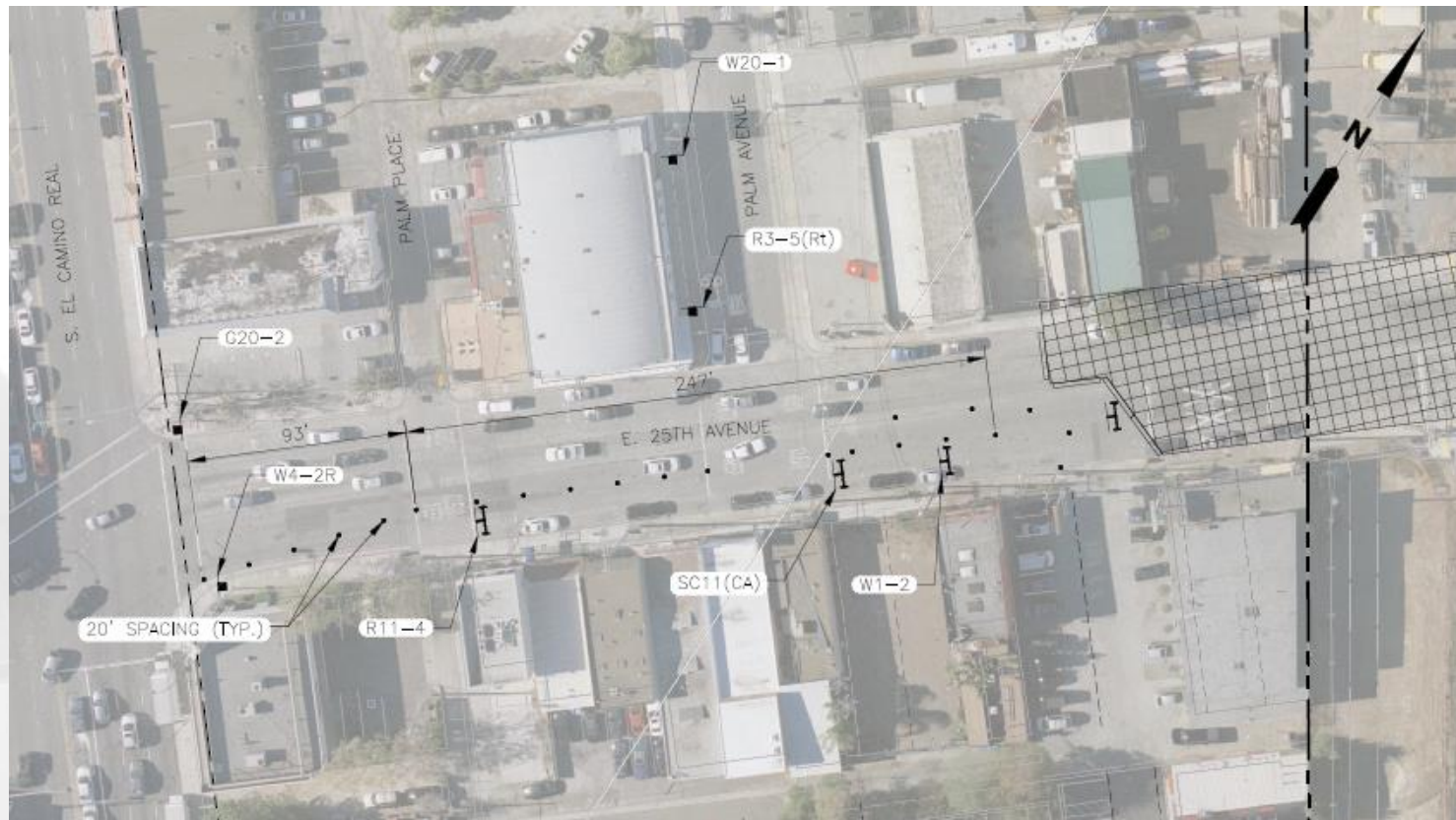
Hillsdale Station Closure

- Passengers who drive, get dropped off or use transit → use Belmont Station
- Passengers who walk to Hillsdale → take Samtrans bus or shuttle to Belmont Station

Construction Impacts/Mitigation

Traffic and Parking Impacts at 25th Ave

Full closure during reconstruction and lowering road – 60 Days Max



Construction Impacts/Mitigation

Relocate Utilities (work done by utilities)

- Protect facilities in place where possible
- Bore new facilities where feasible

Potential Impacts during Construction

Noise and Vibration Impacts:

- Temporary: Only during construction
- Construction equipment and procedures selected to ensure noise and vibration impact thresholds are not exceeded
- Additional noise mitigation measures will be implemented

Work Hours

- Majority of construction activities will take place Mon-Fri during the day
- Certain construction activities require work to be completed at night or on weekends when there is reduced or no revenue train service
- JPB will notify community in advance of nighttime and weekend work

Next Steps

- June 2017: Award Construction Contract
- Sept. 2017: More accurate schedule
- Fall 2017: Additional public meetings

Public Outreach & Community Engagement

- Dedicated Web page:
www.caltrain.com/25thGS
- Construction Outreach Hotline: 650.508.7726
- Regular Updates and Public Meetings
 - Pre-construction and during construction
 - Tied to critical milestones/project decisions
 - Mail/Email/Website

- Schedules
- Stations
- Fares
- Rider Information
- Projects & Plans**
 - Projects
 - Plans
 - Caltrain Modernization
- About Caltrain



+ Print Text Size
> caltrain.com > Projects & Plans > Projects > Caltrain Capital Program > 25th Avenue Grade Separation

25th Avenue Grade Separation

[Sign Up for Project Updates](#)



Rendering of Completed 25th Avenue Grade Separation Project

Subscribe

You can now receive Caltrain notifications via e-mail!
Find out more [HERE](#)

- ### Highlights
- Weekday Timetable
 - Weekend Timetable
 - Special Events
 - Electrification

Social

Social Media

Construction Notices

25th Avenue Grade Separation Project

Dear Caltrain Neighbor,

Please join us for a community meeting regarding the 25th Avenue Grade Separation Project. Caltrain, in cooperation with the City of San Mateo, will raise the tracks and slightly lower the road (grade separate) at 25th Avenue in San Mateo. This will improve safety for both motorists and pedestrians, and it will reduce local traffic congestion in San Mateo. In addition, the project will provide an opportunity to complete east-west street connections at 28th and 31st Avenues. As part of the project improvements, Caltrain will build a new elevated Hillsdale Station located at 28th Avenue. The new station will offer updated amenities and will allow for better safety and reduced traffic.

Meeting Information

Tuesday, April 11, 2017 from 6:30 p.m. to 7:30 p.m.

First Presbyterian Church, Lighthouse Room

194 W 25th Ave, San Mateo, CA 94403

Entrance at back of building on Lula Belle Ln.

Parking available in church lot at 25th & Hacienda St.

The meeting will include a presentation detailing the project scope and tentative construction schedule. For more information on the project, please visit www.caltrain.com/25thGS.

3.22.17

Example of mailed notice



Contact

Construction Information	Service Information
<p data-bbox="278 596 855 718">Office of Public Affairs Phone: 650.508.7726</p>	<p data-bbox="1064 596 1837 718">Customer Service Department Phone: 800.660.4287</p>
<p data-bbox="653 839 1335 1011">1250 San Carlos Avenue PO Box 3006 San Carlos, CA 94040-1306</p>	
<p data-bbox="668 1082 1319 1129">www.caltrain.com/25thGS</p>	



Questions

