



Clipper CIDs Relocations & Additions Project

JPB Citizens Advisory Committee
July 15, 2020
Agenda Item 8

Clipper CIDs Relocations & Additions

- Who?
- What?
- When?
- How?

Who?

- Who is this project for?
 - Our Customers
 - Eliminate Doubling Back
 - Ease of Use
 - Caltrain
 - Increase #s of Customers @ Key Stations
 - Transition Toward Clipper
- Who is doing this?
 - Caltrain
 - Operations, Fare Management/Marketing, Project Delivery
 - MTC

What?

- What are Clipper Card Interface Devices (CIDs)?
- What did this project do?

What?

- What are Clipper Card Interface Devices (CIDs)?



What?

- What are Clipper CIDs?
 - Regional Fare Collection System
 - Metropolitan Transportation Commission (MTC)
 - Use with Clipper Card
 - Smart Card
 - Fare Payment
 - Transit Fare Payment in San Francisco Bay Area
 - Clipper Card



What?

- What are Clipper CIDs?



What?

- What did this project do?
 - Relocate & Add CIDs
 - To Entrance & Exit Points
 - More CIDs Where Customer Flows
 - 3 Key Stations
 - Redwood City
 - Menlo Park
 - Palo Alto

When?

- Design
 - Redwood City = May 2019
 - Menlo Park = June 2019
 - Palo Alto = August 2019

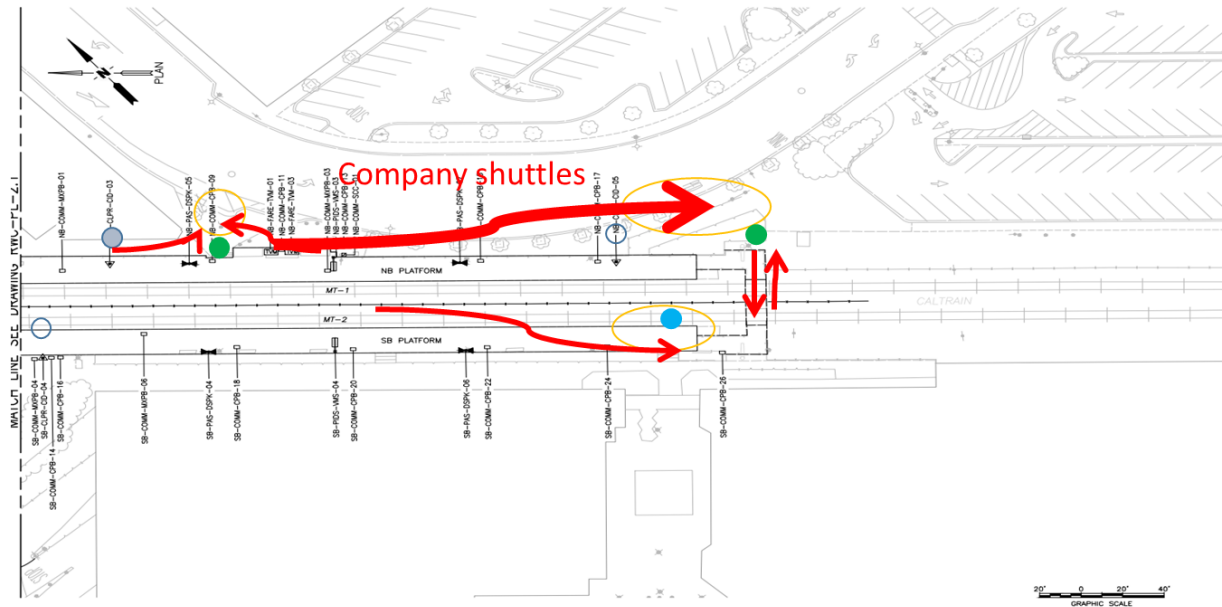
- Construction
 - Redwood City = October 2019
 - Menlo Park = March/May 2020
 - Palo Alto = June 2020

How?

- Identify Where Customers are coming from & going to?
 - Go Pass users
 - Info from Marketing Study
- Add CIDs
 - Limited to 7 New CIDs
- Activate New CIDs
 - Borrow CIDs from MTC
- Remove (Relocate) CIDs
 - Ensure New CIDs Operating 1st

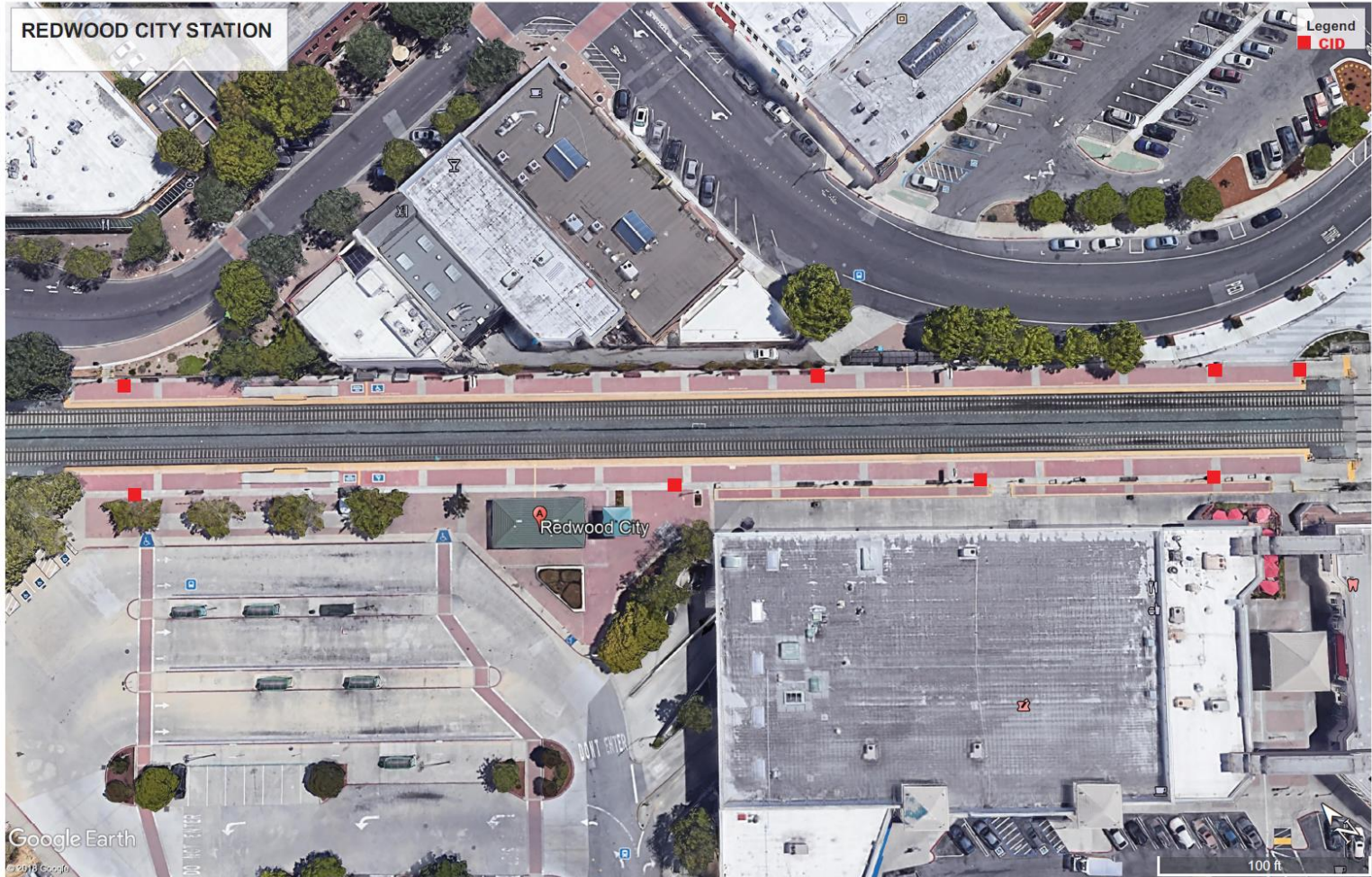
How?

Redwood City Station 07/10/18 AM trains



- Existing CID location
 - Primary recommended CID locations
 - Exit point
 - Move existing CID
 - Secondary recommended CID locations
-

How?



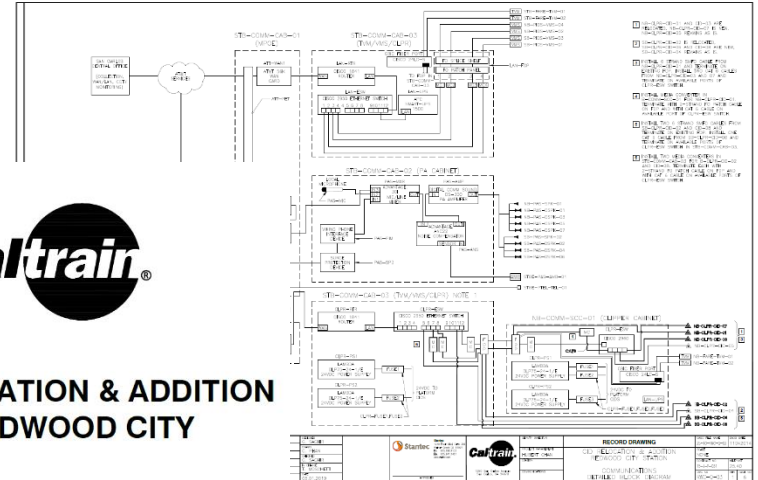
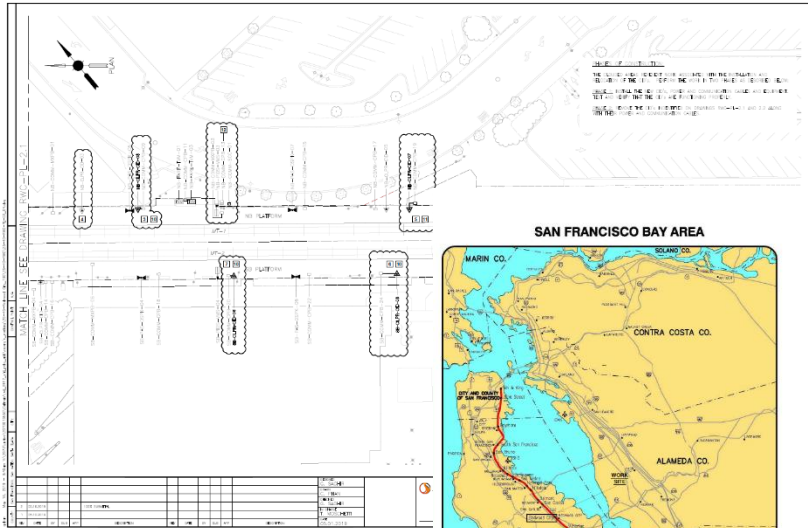
How?



How?



How?



TYPE & QUANTITY	CONDUIT AND CAB FUNCTION
1 - BSMFO CABLE 2*16 AWG	(N) ED-01 COMMUNICATIONS & POWER
1 - CAT 6 CABLE 2*16 AWG	(N) ED-07 COMMUNICATIONS & POWER

TYPE & QUANTITY	CONDUIT AND CAB FUNCTION
1 - BSMFO CABLE 2*16 AWG	(N) ED-01 COMMUNICATIONS & POWER
1 - CAT 6 CABLE 2*16 AWG	(N) ED-07 COMMUNICATIONS & POWER

TYPE & QUANTITY	CONDUIT AND CAB FUNCTION
1 - BSMFO CABLE 2*16 AWG	(N) ED-02 COMMUNICATIONS & POWER
1 - CAT 6 CABLE 2*16 AWG	(N) ED-08 COMMUNICATIONS & POWER
1 - BSMFO CABLE 2*16 AWG	(N) ED-08 COMMUNICATIONS & POWER
1 - CAT 6 CABLE 2*16 AWG	(N) ED-08 COMMUNICATIONS & POWER
1 - BSMFO CABLE 2*16 AWG	(N) ED-08 COMMUNICATIONS & POWER
1 - CAT 6 CABLE 2*16 AWG	(N) ED-08 COMMUNICATIONS & POWER
1 - BSMFO CABLE 2*16 AWG	(N) ED-08 COMMUNICATIONS & POWER
1 - CAT 6 CABLE 2*16 AWG	(N) ED-08 COMMUNICATIONS & POWER
1 - BSMFO CABLE 2*16 AWG	(N) ED-08 COMMUNICATIONS & POWER
1 - CAT 6 CABLE 2*16 AWG	(N) ED-08 COMMUNICATIONS & POWER
1 - BSMFO CABLE 2*16 AWG	(N) ED-08 COMMUNICATIONS & POWER
1 - CAT 6 CABLE 2*16 AWG	(N) ED-08 COMMUNICATIONS & POWER
1 - BSMFO CABLE 2*16 AWG	(N) ED-08 COMMUNICATIONS & POWER
1 - CAT 6 CABLE 2*16 AWG	(N) ED-08 COMMUNICATIONS & POWER
1 - BSMFO CABLE 2*16 AWG	(N) ED-08 COMMUNICATIONS & POWER
1 - CAT 6 CABLE 2*16 AWG	(N) ED-08 COMMUNICATIONS & POWER
1 - BSMFO CABLE 2*16 AWG	(N) ED-08 COMMUNICATIONS & POWER
1 - CAT 6 CABLE 2*16 AWG	(N) ED-08 COMMUNICATIONS & POWER

TYPE & QUANTITY	CONDUIT AND CAB FUNCTION
1 - BSMFO CABLE 2*16 AWG	(N) ED-08 COMMUNICATIONS & POWER
1 - CAT 6 CABLE 2*16 AWG	(N) ED-08 COMMUNICATIONS & POWER

TYPE & QUANTITY	CONDUIT AND CAB FUNCTION
1 - BSMFO CABLE 2*16 AWG	(N) ED-08 COMMUNICATIONS & POWER
1 - CAT 6 CABLE 2*16 AWG	(N) ED-08 COMMUNICATIONS & POWER

QTY	UNIT	DESCRIPTION	MANUFACTURER	PART NUMBER
2	1000'	EA #14 AWG TRIN STRANDED COPPER BLACK COLOR JACKET CONDUCTOR	L-COM	NS121005-00V
8	1500'	EA #14 AWG TRIN STRANDED COPPER RED COLOR JACKET CONDUCTOR	L-COM	H0X-PVT
9	800'	EA #16 AWG TRIN STRANDED COPPER BLACK COLOR JACKET CONDUCTOR	COMMATEL-CARR OR EQUAL	PER MANUFACTURER
10	800'	EA #16 AWG TRIN STRANDED COPPER RED COLOR JACKET CONDUCTOR	PER	SR-1110-SC10(XT)
11	401'	EA 1" PVC SCHEDULE 40 CONDUIT UL LISTE	CORNING	33E5F-T410102D
12	10*	EA 1/2" LIQUID TIGHT FLEXIBLE METAL CONDUIT	PER	7953A
13	10*	EA 1/2" LIQUID TIGHT FLEXIBLE METAL CONDUIT	PER	7953A
14	2	EA 24 VDC, 3.14 (IN RAIL MOUNTED) POWER SUPPLY	GRAYBAR	PER MANUFACTURER
15	9	EA 1/4" BORE SCHEDULE 40 PIPE AND FLEX HULLER	GRAYBAR	PER MANUFACTURER
16	8	EA CAT 6 PATH CABLE 7 FT LONG	LEITON	FLW
17	3	EA FIBER PATCH CABLE DUPLEX, SM, SC-SC	PER	02465-07L
18	6	EA UNICAM HIGH PERFORMANCE SC, SM (OS2) CONNECTION	PER	SBVUYUS3RSCU
19	2	EA CRH INSTALLED SINGLE CASSETTE FOR TERMINATING FO CABLE	CORNING	95-200-41
20	3	EA CRH INSTALLED SINGLE CASSETTE FOR TERMINATING FO CABLE	CORNING	CRH-0512-98-POGGE
			OWNER FINISHED	

* CABLE LENGTH IS AN ESTIMATE. CONTRACTOR IS RESPONSIBLE FOR PROVIDING NEEDED LENGTH.



How?



How?



Questions?
