

Safety Highlight

The San Mateo 25th Avenue grade crossing is currently undergoing grade separation construction. To address grade crossing safety during construction, Caltrain Safety convened a meeting with stakeholders to assess regulatory compliance and recommend potential safety improvements. Stakeholders included Caltrain Safety, Transit PD, project contractor safety and project representative, City of San Mateo Engineering, and Caltrain Construction Resident Engineer.

The 25th Avenue Grade Separation project Traffic Management Plan controls were determined to be compliant.



Before: East bound 25th Avenue grade crossing

In efforts to effect improvement, the stakeholders provided several recommendations. Recommendations that were implemented included the following:

- * Added “Stop Here” sign since the railroad traffic safety devices were relocated temporarily farther from the crossing during construction,
- * Re-evaluated adjacent Traffic Signal pre-emption synchronization,
- * Notified of special events that draw high pedestrian traffic that slows vehicle

traffic clearing the street intersection in order to adjust plan accordingly,

- * Conducted random High-Intensity Strategic Enforcement Program (HISEP) initiatives targeting education and enforcement at this grade crossing, and
- * Made clear where vehicles should not stop when grade crossing traffic devices activate upon train approaching by repainting and enlarging “KEEP CLEAR” area.



Signs added where to stop prior to designated “KEEP CLEAR” improved area

Grade Crossing Hazard Analysis is conducted as part of ongoing safety continuous improvements that are practicable and consistent along the Caltrain corridor.

The 25th Avenue grade crossing will be separated from train traffic when construction is completed. The Grade Crossings Improvement project is a result of the Grade Crossing Hazard Analysis that was conducted jointly by Caltrain Safety and Engineering and is currently completing safety improvements at 15 grade crossings from San Francisco to San Jose.

At Caltrain, safety is always a priority.



Monthly Safety and Security Report April 2018

Peninsula Corridor Electrification Project (PCEP) Safety/Security

PCEP Safety and Security Certification – Construction Phase

Project safety and security certification is the process of verifying that certain elements of a project conform to an identified list of safety and security requirements. The requirements are defined by design criteria, contract specifications, applicable codes, and industry best practices. As PCEP has entered into the construction/installation project phase, the contractor will begin to issue the *Construction Conformance Checklists* to the project Construction Manager or Quality Control Manager as deemed appropriate. This phase of certification is focused on verification that the Project’s safety and security related requirements are satisfactorily incorporated into the finished project as designed. The *Construction Conformance Checklists* tracks the testing and/or inspection activities that verify conformance to the established safety and security requirements of the project.

As the safety and security certification checklists are being completed, the PCEP contractor will assemble and organize the required verification documents. Verification documentation includes the following:

- Visual Inspection reports;
- Test reports;
- Photos supporting verification;
- Daily Inspection Logs;
- Factory certifications; and/or
- Reviewing and documenting of selected tests.

Education

Rail Safety Presentations/Activities	City	Attendees
JPB CAC Safety Education & Suicide Prevention Presentation	San Carlos	25
NorCal Rail Safety Team Meeting	San Carlos	20
PCEP Fire Life Safety Committee	San Mateo	12



Monthly Safety and Security Report August 2018

Enforcement

Event	AUG 2018	YTD 2018
Felony and Misdemeanor Arrests (all)	19	117
Parking Citations	755	4364
Traffic Citations	156	587
All Other Infraction Citations (including trespassing)	42	491
Ejections/Contacts: Train, Station, Right of Way	28	245
Proof-of-Payment Citations	1094	1288
Crisis Interventions w/ Emergency Commitments	2	26
Total Calls For Police Service	937	7187

Significant

Aug 1 – Aug 31: During this period, the Transit Police conducted monthly High-Intensity Strategic Enforcement Program (HISEP) initiatives targeting education and enforcement in locations where persons may engage in unsafe behavior.

- The Transit Police responded to five reports of persons trespassing on the Caltrain right of way. In each instance, the person was cited and released.
- The Transit Police cited 37 persons for safety violations as part of the HISEP effort.

Aug 1 – Aug 31: The Transit Police conducted routine security checks at various Caltrain stations. As a result, one person was arrested on outstanding felony warrant and 13 persons were arrested on outstanding misdemeanor warrants. In each instance, the person was booked into county jail.

Aug 1 – Aug 31: Transit Police responded to one report of an individual who appeared to be a danger to them self. The person was located, taken into protective custody, and transported to emergency psychiatric care.

Aug 1- Aug 31: Transit Police continued several enforcement measures in association with Caltrain’s special baseball service:

The Transit Police would like to remind Caltrain patrons to keep vehicle doors locked and not leave anything of value visible inside the vehicle.



Monthly Safety and Security Report August 2018

Aug 1- Aug 31: Transit Police received –

- one report of vehicle burglary at the Sunnyvale Caltrain station

Aug 24: The Transit Police responded to a report of an adult male trespassing on the Caltrain right of way in Burlingame struck by a southbound train. The incident is under investigation by the Transit Police.

Bike Thefts:

Aug 1 – Aug 31: The Transit Police received in total 11 reports of bicycle thefts:

- The bicycle thefts occurred at various Caltrain stations.
- The largest number of thefts (five) occurred at the Palo Alto Caltrain Station.

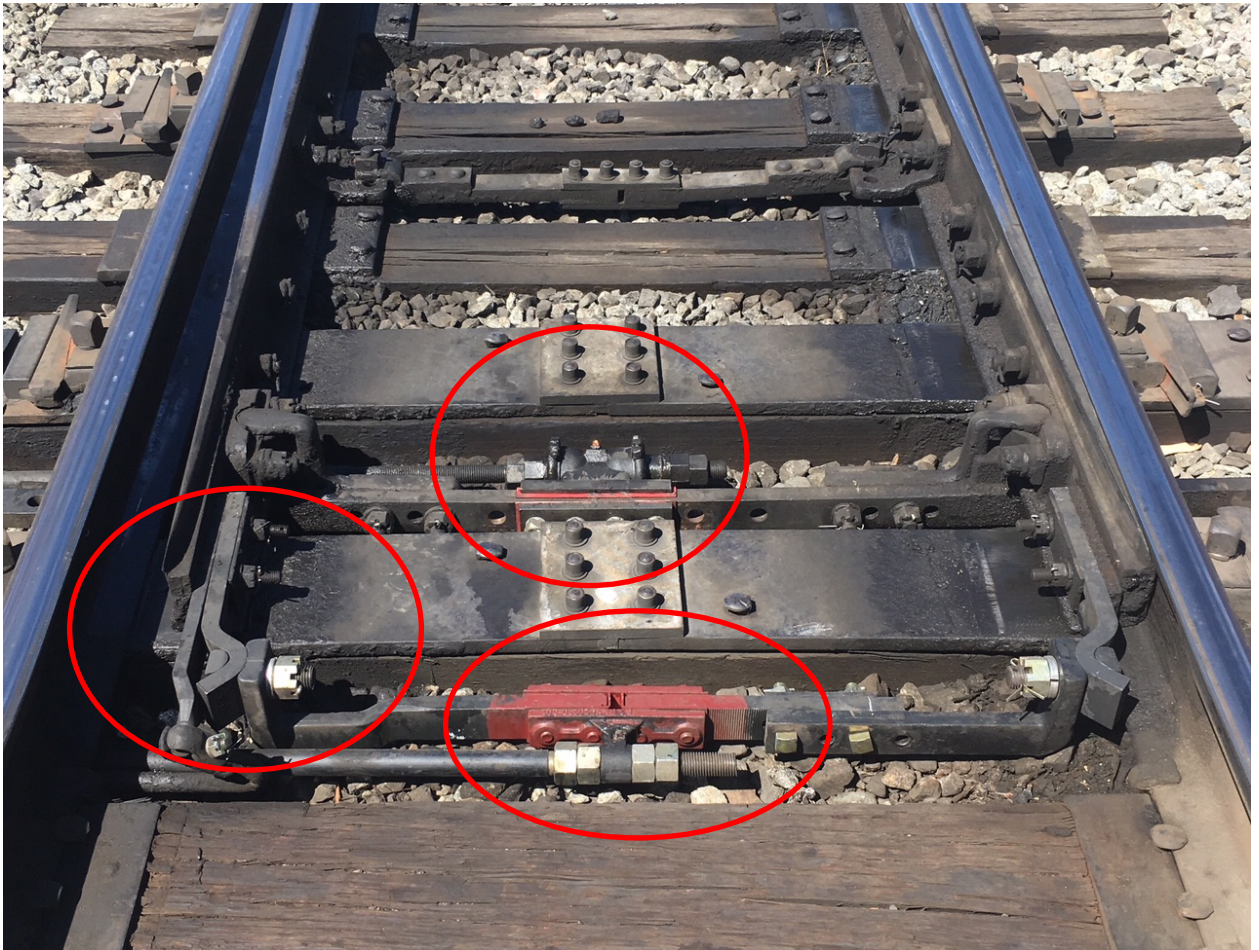
Please visit www.smcsheriff.com/patrol-services/transit-police-bureau for tips to keep your bicycle safe.

Engineering

Maintenance of Way

- Surfaced 16,222 lineal feet of mainline track
- Performed maintenance grinding and welding on 48 turnouts on the mainline, installed 20 new thermite welds, and installed 54 new railroad ties.
- Switch Rehabilitation project: Rehabilitated 22 switch machines on the mainline. This project addresses replacement of designated critical components at designated critical control points on the mainline. The project's intent is to improve on time train performance upon completion by reducing downtime at these signals.

Monthly Safety and Security Report August 2018



Replaced insulated switch rods, basket rods, point detector rods and other related components at Mile Post 14.23 in Burlingame.

- Thermite welding and switch component welding throughout mainline.
 - Mile post 14.23 in Burlingame

Monthly Safety and Security Report August 2018



Switch point repair at Control Point Sierra in South San Francisco

- Repair work completed on mainline switch that was damaged by contractor just north of South San Francisco Station; replaced ties and re-adjusted switch



Switchpoint ground down to remove cracks in the metal and built up with new welded metal

Monthly Safety and Security Report August 2018



Switch point ground down and ready for service

Monthly Safety and Security Report August 2018

- Install new asphalt to remove tripping hazard at Lawrence Station



Before



During



Completed work

Monthly Safety and Security Report August 2018

- Tree trimming along the ROW at various locations:



Tree trimming at MP 27 in Redwood City



Bush removal at Villa Terrace Crossing in San Mateo

Monthly Safety and Security Report August 2018



Limb removal at Sunnyvale Station

- Installation of solar panel rail greasers at CP Sierra(South SF) and at Mile Post 17.38 in San Mateo



South San Francisco



San Mateo