

# CALTRAIN ELECTRIFICATION



## SOUTH SAN FRANCISCO STATION STORM DRAIN RELOCATION NOTICE | October, 2019

### UPCOMING ACTIVITIES AND CLOSURE

Beginning **October 28**, Caltrain Electrification crews will temporarily close a portion of the South San Francisco Station platform area in order to perform underground storm drain relocation construction at the South San Francisco Station. The temporary closure will last from **October 28 until November 25, 2019**.

Caltrain crews will be extending the existing fence adjacent to the construction on the Traction Power Substation (TPS) an additional 15 feet to the east. The temporary extension will extend to the rear of the existing platform shelters at the north end of the platform. The shelters will remain open to Caltrain customers during construction which is expected to have minimal effect on the boarding of Caltrain customers from the platform.

Once construction is complete, the temporary fencing will be removed, restoring full platform access to customers.

A map of the temporary closure area is provided on the back of this notice.

### CONSTRUCTION ACTIVITIES

The anticipated construction activities during this time will be excavation, trench shoring, installation of piping materials and backfill. Crews will utilize excavation equipment, pneumatic hammers, and dump trucks for removal.

Work will take place during the day and at night, with work occurring between 5 a.m. and 3 p.m. Monday - Friday. The construction area will be closed to the public 24/7 during the construction period.

### PROJECT OVERVIEW

Over the last decade, Caltrain has experienced a substantial increase in ridership and anticipates further increases in ridership demand as the Bay Area's population grows. Caltrain Electrification, scheduled to be operational by 2022, will electrify and upgrade the performance, operating efficiency, capacity, safety and reliability of Caltrain's commuter rail service.

Caltrain Electrification is a key component of the Caltrain Modernization Program and consists of replacing diesel-hauled with an electric train system for services between Fourth and King Street Station in San Francisco and the Tamien Station in San Jose. The project will include the installation of new electrical infrastructure and the purchase of electric trains.

### CONTACT INFORMATION

Caltrain has established a project information line and project e-mail for Caltrain Electrification to respond to questions and comments from residents and stakeholders.

The project information line can be reached at **650.399.9659** or toll free at **800.660.4287**.

The project e-mail is [calmod@caltrain.com](mailto:calmod@caltrain.com)

### In addition, Caltrain has established a community outreach office at:

2121 S. El Camino Real  
Suite A-100  
San Mateo, CA 94403

A project representative will be available to answer questions in person by appointment Mondays through Fridays during construction.

Sign up for weekly construction updates at:  
[www.calmod.org/get-involved](http://www.calmod.org/get-involved)

**WE APOLOGIZE FOR ANY INCONVENIENCE THIS MAY CAUSE.**

#### FOR MORE INFORMATION



[calmod.org](http://calmod.org)

Para traducción llame al 1.800.660.4287

如需翻譯,請電 1.800.660.4287

Cần dịch thuật, xin gọi 1.800.660.4287

#### CONTACT

MAIL: 2121 S. El Camino Real, Suite 300  
San Mateo, CA 94403



650.399.9659

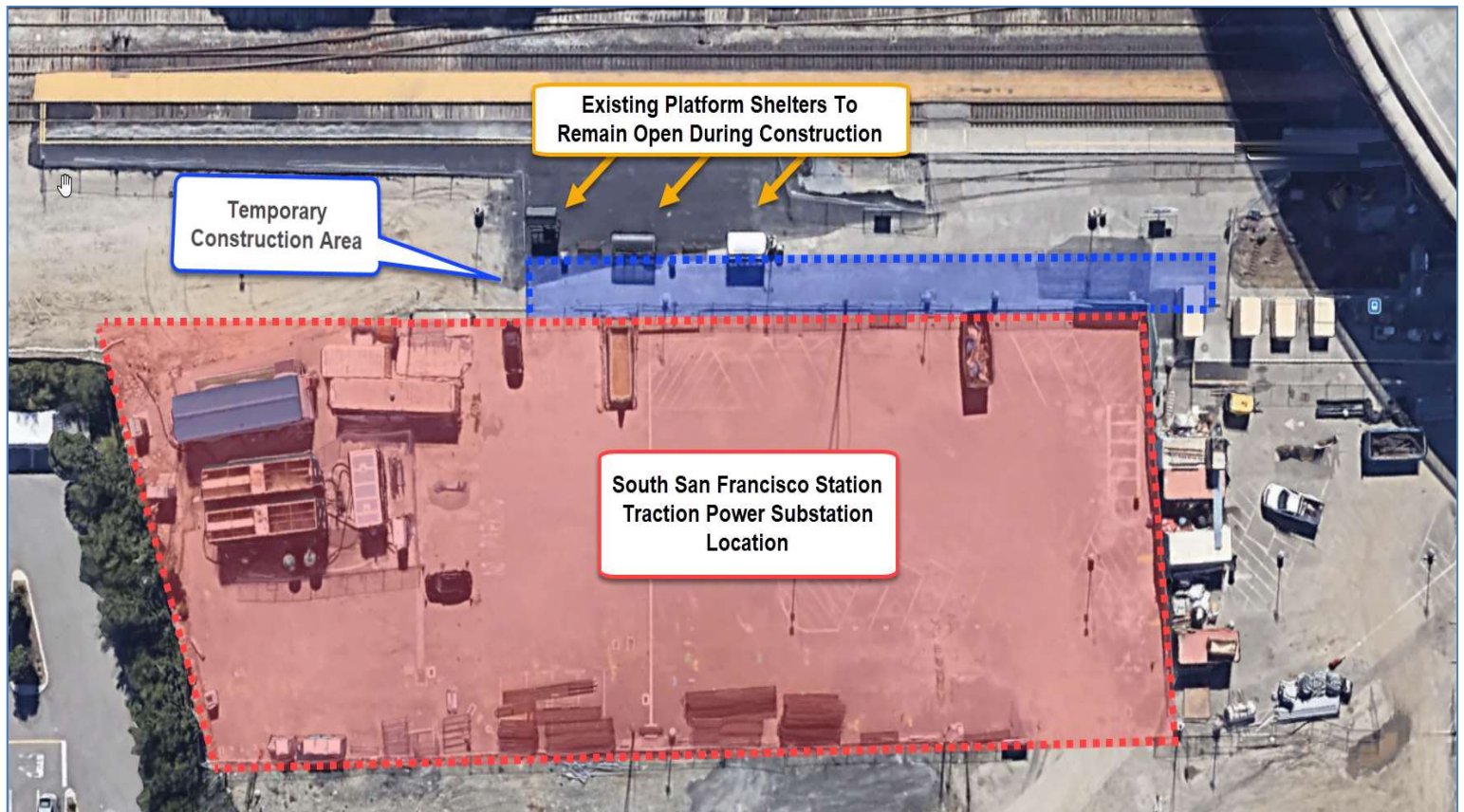


[calmod@caltrain.com](mailto:calmod@caltrain.com)

# CALTRAIN ELECTRIFICATION

SOUTH SAN FRANCISCO STATION STORM DRAIN RELOCATION NOTICE | October, 2019

## WORK AREA



Once construction is complete the temporary fencing will be removed, restoring full platform area access.

### FOR MORE INFORMATION



[calmod.org](http://calmod.org)

Para traducción llama al 1.800.660.4287

如需翻譯,請電 1.800.660.4287

Cần dịch thuật, xin gọi 1.800.660.4287

### CONTACT

MAIL: 2121 S. El Camino Real, Suite 300  
San Mateo, CA 94403



650.399.9659



[calmod@caltrain.com](mailto:calmod@caltrain.com)

