

CALTRAIN ELECTRIFICATION



CENTER STREET LANE CLOSURE NOTICE | August, 2020

UPCOMING ACTIVITIES AND LANE CLOSURE

Between the period of August 20 and August 21, Caltrain will be performing pothole work in Millbrae that will require a partial closure of the Center Street railroad crossing to vehicle traffic. The temporary lane closure is required due to construction equipment and crews entering and exiting the Caltrain right-of-way at Center Street.

Work will take place on August 20 through August 21 between 7:00 am to 4:00 pm

Center Street will be partially closed during construction which will require flaggers to be present for traffic control.

Directional signs will direct vehicle traffic to use either the eastbound lane or westbound lane of Center Street as a detour during construction. **Only one lane will be closed at a time.** The westbound lane will remain open when work requires closure of the eastbound lane. Once work in the eastbound lane is complete, crews will then close the eastbound lane and open the westbound lane for detour traffic. Crosswalks will remain open for pedestrian traffic.

A lane closure map is provided on the reverse of this notice for vehicle and bicycle traffic.

CONSTRUCTION ACTIVITIES

During the closure, crews will be locating underground utilities, testing soil conditions, and conduct duct back trenching to install signal cable for Caltrain Electrification. Work will consist of excavation, potholing, cutting of asphalt and concrete, conduit installation and excavation restoration. Construction activities require the temporary crossing closures to comply with safety regulations.

Crews will also be working along the Caltrain corridor to install foundations outside of the closure hours noted above. Work may take place during the day and at night, with night work occurring between 10 p.m. and 5 a.m. There may also be occasional 24-hour work on weekends.

Caltrain will work with contractors to minimize night work to limit the impact to surrounding communities; however, some work must be performed at night in order to maintain regular Caltrain service. To mitigate noise and other impacts during night activities, the field team will utilize acoustical noise barrier blankets and will position lights away from residential and business areas. Caltrain has established a dedicated project hotline and email for residents concerned about these potential impacts.

PROJECT OVERVIEW

Over the last decade, Caltrain has experienced a substantial increase in ridership and anticipates further increases in ridership demand as the Bay Area's population grows. Caltrain Electrification, scheduled to be operational by 2022, will electrify and upgrade the performance, operating efficiency, capacity, safety, and reliability of Caltrain's commuter rail service.

Caltrain electrification is a key component of the Caltrain Modernization Program and consists of replacing diesel-hauled with an electric train system for services between Fourth and King Street Station in San Francisco and the Tamien Station in San Jose. The project will include the installation of new electrical infrastructure and the purchase of electric trains.

CONTACT INFORMATION

Caltrain has established a project information line and project e-mail for Caltrain Electrification to record and respond to questions and comments from residents and stakeholders.

The project information line can be reached at **650.399.9659** or toll free at **800.660.4287**.

The project e-mail is calmod@caltrain.com

In addition, Caltrain has established a community outreach office at:

2121 S. El Camino Real
Suite A-100
San Mateo, CA 94403

FOR MORE INFORMATION

 calmod.org

 Para traducción llama al 1.800.660.4287
如需翻譯,請電 1.800.660.4287
Cần dịch thuật, xin gọi 1.800.660.4287

CONTACT

MAIL: 2121 S. El Camino Real, Suite 300
San Mateo, CA 94403

 650.399.9659

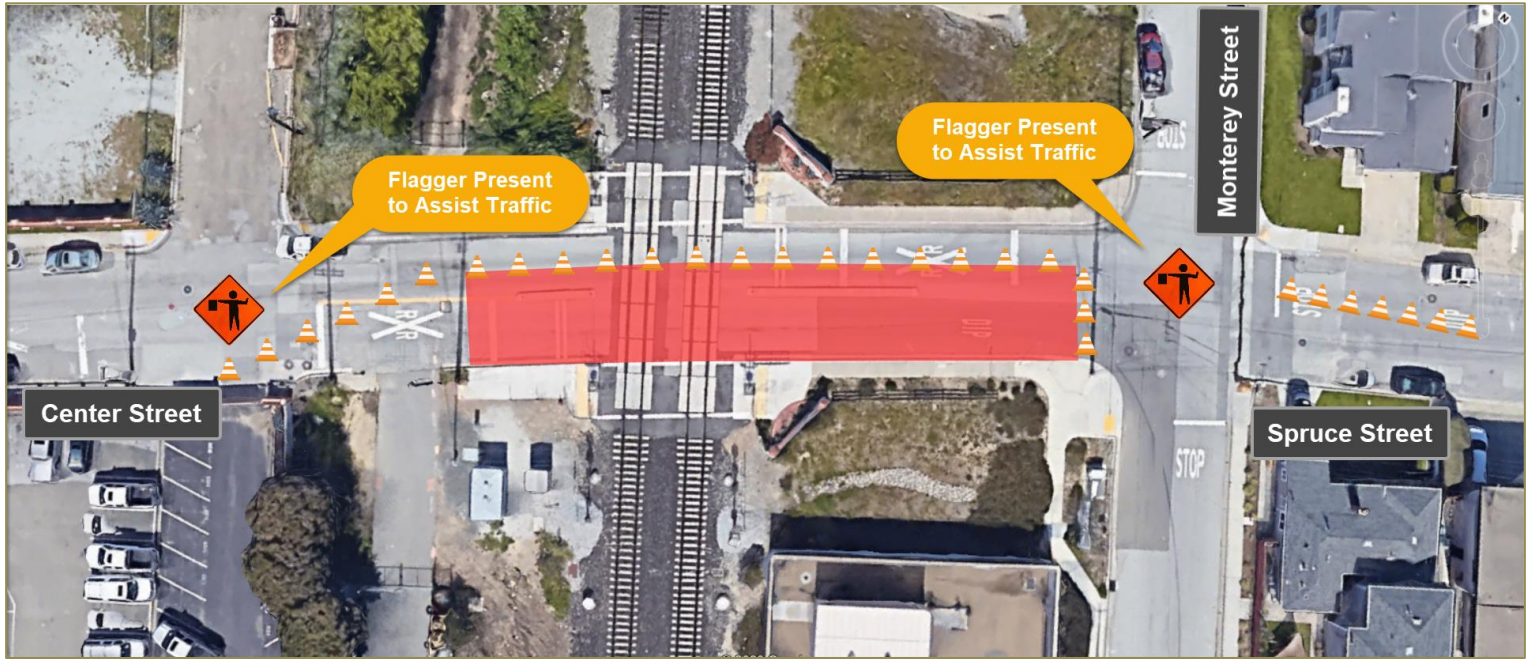
 calmod@caltrain.com

Caltrain Electrification Project

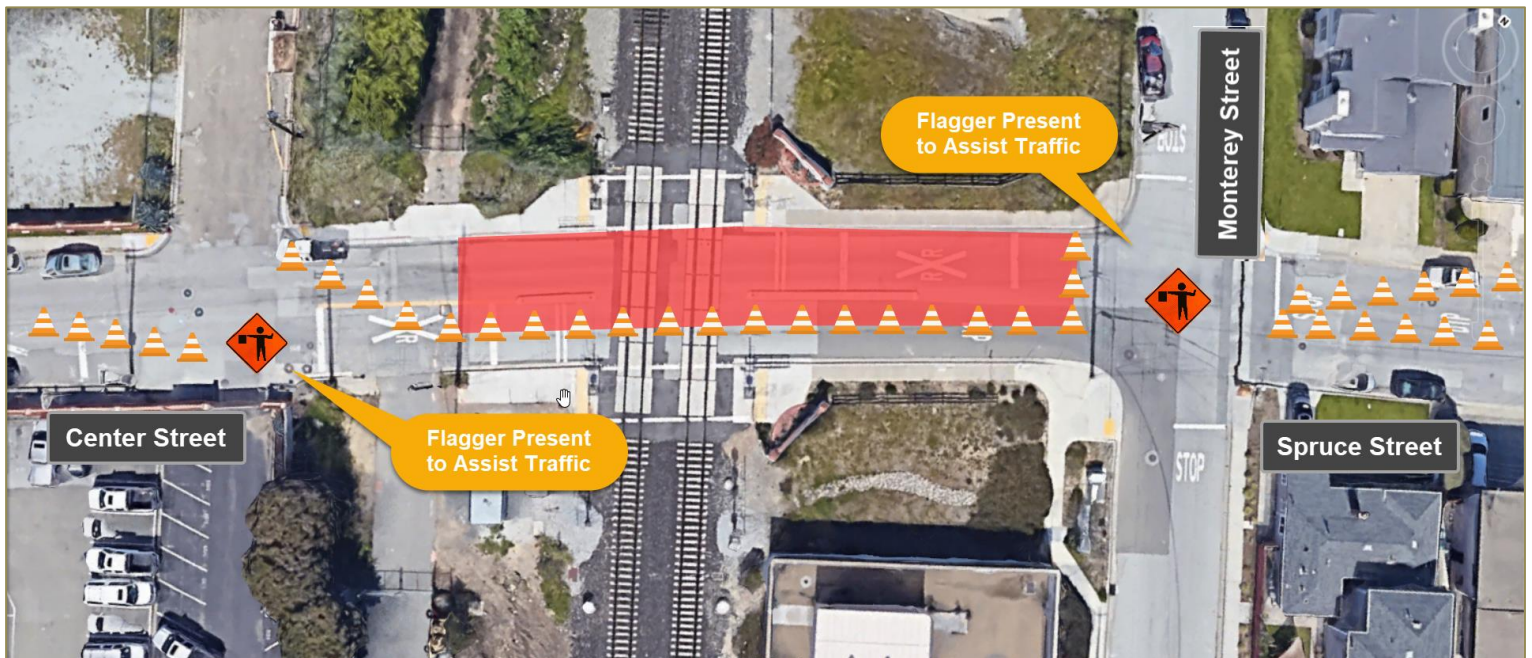
Sign up for weekly construction updates can be found online at:
www.calmod.org/get-involved

CENTER STREET LANE CLOSURE NOTICE | August, 2020

DETOUR MAP – EASTBOUND CLOSURE



DETOUR MAP – WESTBOUND CLOSURE





FOR MORE INFORMATION

 calmod.org

 Para traducción llama al 1.800.660.4287
如需翻譯,請電 1.800.660.4287
Cần dịch thuật, xin gọi 1.800.660.4287

CONTACT

MAIL: 2121 S. El Camino Real, Suite 300
San Mateo, CA 94403

 650.399.9659
 calmod@caltrain.com

