

# Peninsula Corridor Electrification

Creates Thousands of Jobs and Supports Continued Productivity



**SUSTAINABILITY**  
Improved Air Quality  
Reduced Regional Traffic Congestion

**CAPACITY**  
Accommodates More Riders  
Provides Faster Service

## HOWARD AVENUE CROSSING CLOSURE NOTICE | April 6-8, 2018

### UPCOMING ACTIVITIES AND CLOSURE

**Beginning April 6 at 9p.m.** Caltrain will be performing foundation installation work in Burlingame that will require temporary closures at the Howard Avenue grade crossing.

The Howard Avenue roadway crossing will be temporarily closed:

**Friday, Apr. 6 from 9 p.m. to Saturday, Apr. 7 at 5 a.m.**

**AND**

**Saturday, Apr. 7 from 9 p.m. to Sunday, Apr. 8 at 5 a.m.**

Illuminated and directional signs will direct vehicle traffic to detours at North Lane and Bayswater Avenue. A detour map is provided on the reverse of this notice.

### CONSTRUCTION ACTIVITIES

The anticipated construction activities during these closures include excavation, placement of rebar, concrete fill, electrical grounding and installation of foundations. Crews will utilize on-track foundation trains that will require the temporary crossing closures to comply with safety regulations.

Work will take place during the day and at night, with night work occurring between 8 p.m. and 6 a.m. There may also be occasional 24-hour work on weekends. Caltrain will work with contractors to minimize night work to limit the impact to surrounding communities; however, some work must be performed at night in order to maintain regular Caltrain service. To mitigate noise and other impacts during night and weekend activities, the field team will utilize acoustical noise barrier blankets and will position lights away from residential and business areas. Caltrain has established a dedicated project hotline and email for residents concerned about these potential impacts.

### PROJECT OVERVIEW

Over the last decade, Caltrain has experienced a substantial increase in ridership and anticipates further increases in ridership demand as the Bay Area's population grows. Caltrain Electrification, scheduled to be operational by 2022, will electrify and upgrade the performance, operating efficiency, capacity, safety and reliability of Caltrain's commuter rail service.

Caltrain electrification is a key component of the Caltrain Modernization Program and consists of replacing diesel-hauled with Electric Multiple Unit (EMU) train system for services between Fourth and King Street Station in San Francisco and the Tamien Station in San Jose. The project will include the installation of new electrical infrastructure and the purchase of electric vehicles.

### PUBLIC INFORMATION OFFICE

Caltrain has established a project information line and project e-mail for Caltrain Electrification to record and respond to questions and comments from residents and stakeholders.

The project information line can be reached at **650.399.9659** or toll free at **800.660.4287**.

The project e-mail is [calmod@caltrain.com](mailto:calmod@caltrain.com)

**In addition, Caltrain has established a community outreach office at:**

2121 S. El Camino Real  
Suite A-100  
San Mateo, CA 94403

A project representative will be available to answer questions in person from 9:00 a.m. and 5:00 p.m. Mondays through Fridays during construction.


Sign up for weekly construction updates can be found online at: [www.calmod.org/get-involved](http://www.calmod.org/get-involved)

### FOR MORE INFORMATION

 [calmod.org](http://calmod.org)

### CONTACT

MAIL: 2121 S. El Camino Real, Suite 300  
San Mateo, CA 94403

 650.399.9659

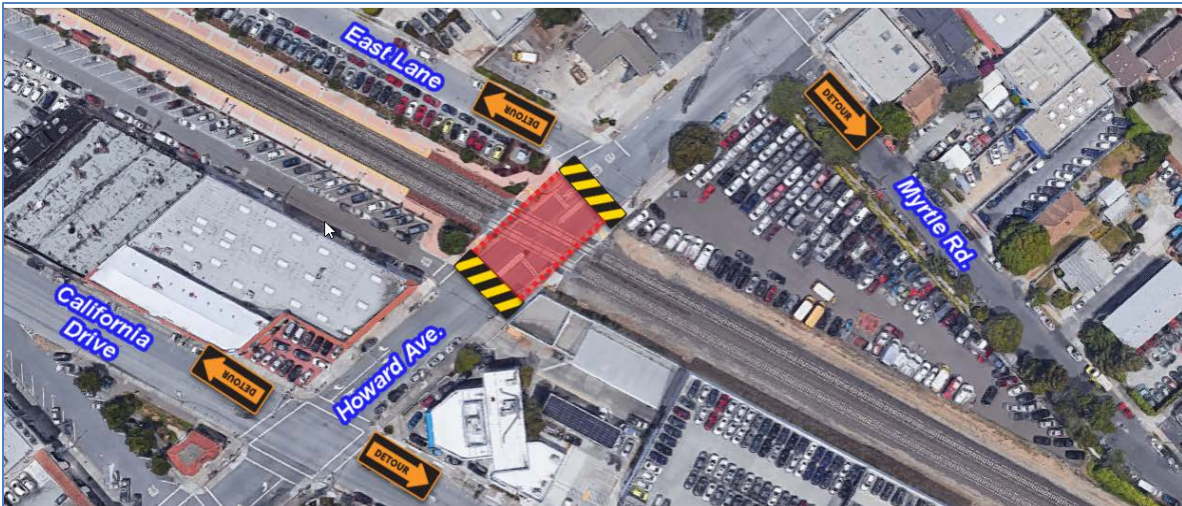
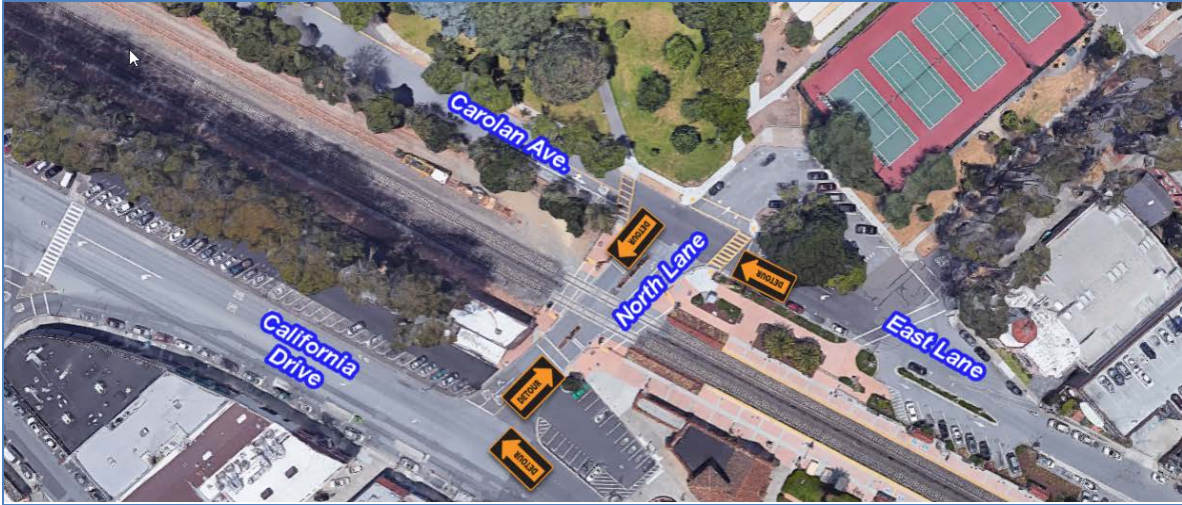
 [calmod@caltrain.com](mailto:calmod@caltrain.com)




# Peninsula Corridor Electrification

HOWARD AVENUE CROSSING CLOSURE NOTICE | April 6-8, 2018

## WORK AREA DETOUR MAP




### FOR MORE INFORMATION

 [calmod.org](http://calmod.org)

### CONTACT

MAIL: 2121 S. El Camino Real, Suite 300  
San Mateo, CA 94403

 650.399.9659

 [calmod@caltrain.com](mailto:calmod@caltrain.com)

