

Peninsula Corridor Electrification

Creates Thousands of Jobs and Supports Continued Productivity



SUSTAINABILITY
Improved Air Quality
Reduced Regional Traffic Congestion

CAPACITY
Accommodates More Riders
Provides More Reliability

ELECTRIFICATION Caltrain **GROUND BREAKING**

VILLA TERRACE & BELLEVUE AVENUE CLOSURE NOTICE | April 2018

UPCOMING ACTIVITIES AND CLOSURE

Between the period of April 16 and April 30, Caltrain will be performing foundation installation work in San Mateo that will require two separate temporary one-day street closures at the Villa Terrace and Bellevue Avenue grade crossings.

Villa Terrace will be temporarily closed for one night from 8 p.m. on April 16 to 6 a.m. on April 17. Signs will be posted on Villa Terrace indicating the exact date of closure.

Illuminated and directional signs will direct vehicle traffic to use Bellevue Avenue as a detour on the night of the closure.

Bellevue Avenue will be temporarily closed for one night from 8 p.m. on April 17 to 6 a.m. April 18. Signs will be posted on Villa Terrace indicating the exact date of closure.

Illuminated and directional signs will direct vehicle traffic to use Villa Terrace or E Poplar Avenue as a detour on the night of the closure.

A detour map for both crossing closures is provided on the reverse of this notice.

CONSTRUCTION ACTIVITIES

The anticipated construction activities during these closures will be for the installation of foundations. Work will consist of excavation, placement of rebar, concrete fill, and electrical grounding. Crews will utilize on-track foundation trains that will require the temporary crossing closures to comply with safety regulations.

Work will take place during the day and at night, with night work occurring between 8 p.m. and 6 a.m. There may also be occasional 24-hour work on weekends. Caltrain will work with contractors to minimize night work to limit the impact to surrounding communities; however, some work must be performed at night in order to maintain regular Caltrain service. To mitigate noise and other impacts during night and weekend activities, the field team will utilize acoustical noise barrier blankets and will position lights away from residential and business areas. Caltrain has established a dedicated project hotline and email for residents concerned about these potential impacts.

PROJECT OVERVIEW

Over the last decade, Caltrain has experienced a substantial increase in ridership and anticipates further increases in ridership demand as the Bay Area's population grows. Caltrain Electrification, scheduled to be operational by 2022, will electrify and upgrade the performance, operating efficiency, capacity, safety and reliability of Caltrain's commuter rail service.

Caltrain electrification is a key component of the Caltrain Modernization Program and consists of replacing diesel-hauled with Electric Multiple Unit (EMU) train system for services between Fourth and King Street Station in San Francisco and the Tamien Station in San Jose. The project will include the installation of new electrical infrastructure and the purchase of electric vehicles.

PUBLIC INFORMATION OFFICE

Caltrain has established a project information line and project e-mail for Caltrain Electrification to record and respond to questions and comments from residents and stakeholders.

The project information line can be reached at **650.399.9659** or toll free at **800.660.4287**.

The project e-mail is calmod@caltrain.com

In addition, Caltrain has established a community outreach office at:

2121 S. El Camino Real
Suite A-100
San Mateo, CA 94403

A project representative will be available to answer questions in person from 9:00 a.m. and 5:00 p.m. Mondays through Fridays during construction.


Sign up for weekly construction updates can be found online at: www.calmod.org/get-involved

FOR MORE INFORMATION

 calmod.org

CONTACT

MAIL: 2121 S. El Camino Real, Suite 300
San Mateo, CA 94403

 650.399.9659

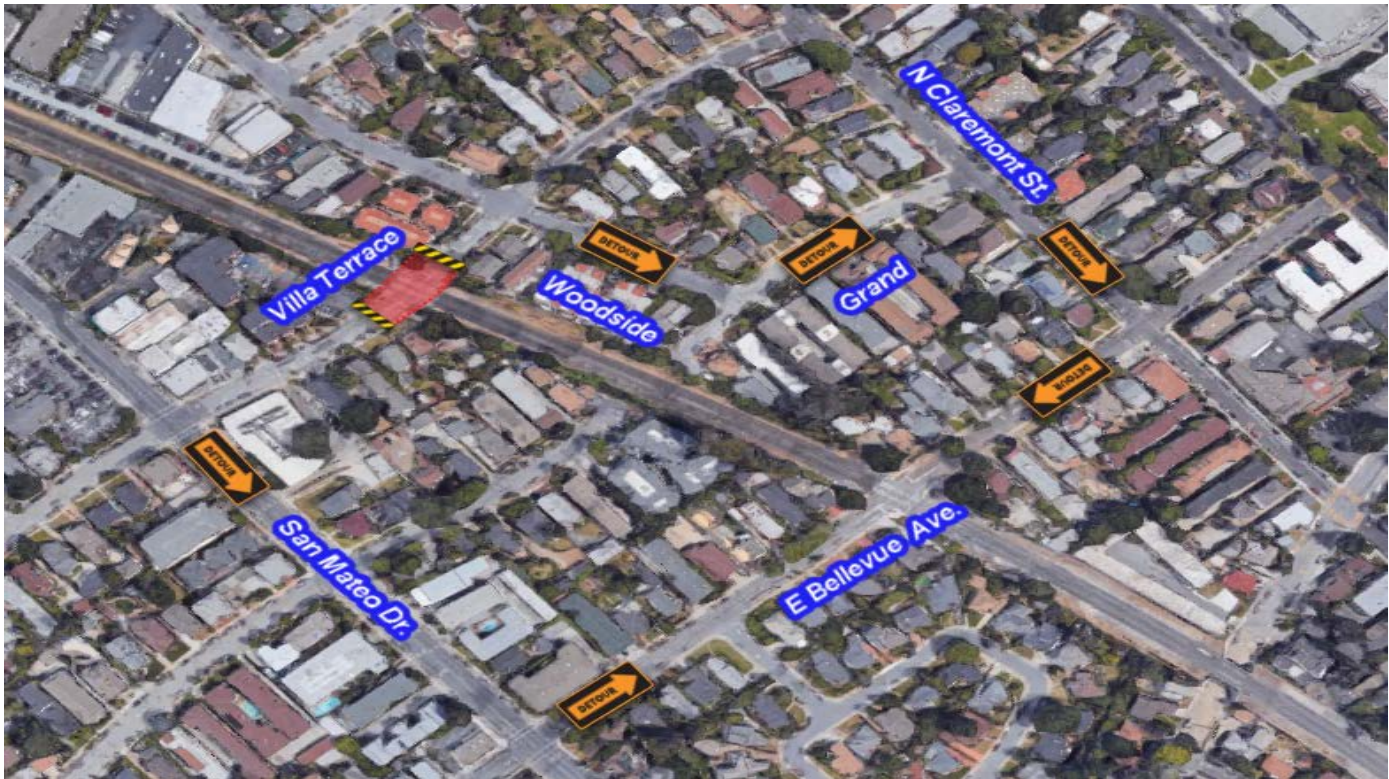
 calmod@caltrain.com



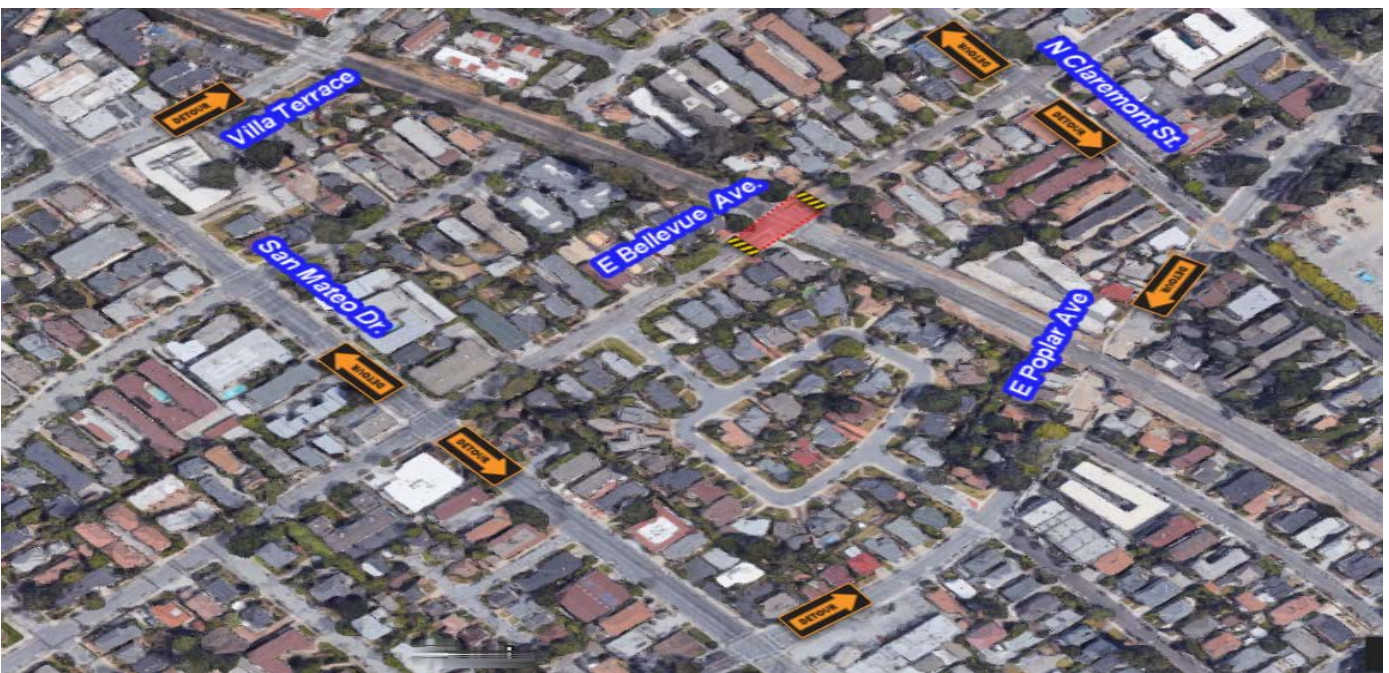
Peninsula Corridor Electrification

VILLA TERRACE & BELLEVUE AVENUE CLOSURE NOTICE | April 2018

VILLA TERRACE WORK AREA DETOUR MAP



BELLEVUE AVE. WORK AREA DETOUR MAP





FOR MORE INFORMATION

 calmod.org

CONTACT

MAIL: 2121 S. El Camino Real, Suite 300
San Mateo, CA 94403

 650.399.9659
 calmod@caltrain.com

