




CalMod

Peninsula Corridor Electrification Update Meeting


Palo Alto Community Meeting
August 28, 2018



CalMod

Agenda

- Caltrain System Overview
- Project Overview
- Electric Multiple Unit (EMU) Design
- Palo Alto Construction Activities
- Questions





Caltrain System

JPB owns right-of-way from SF to San Jose

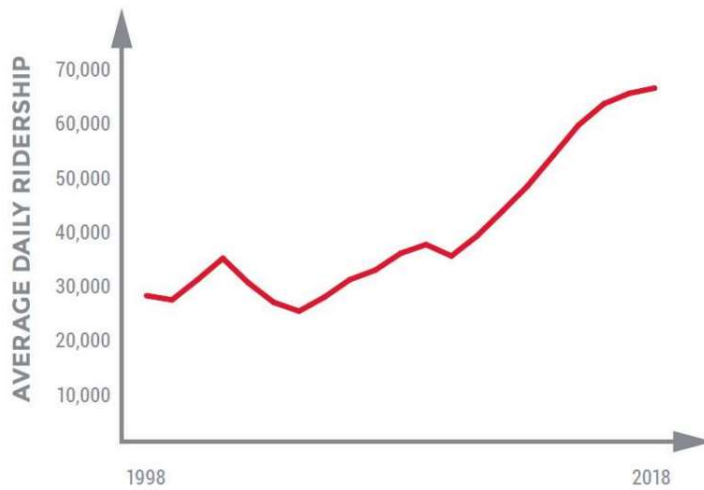


- 32 Stations Gilroy to San Francisco
- 92 Weekday Trains
- At-Grade Crossings, viaducts, and bridges
- Intermodal Connections
- Bike Commuters

Union Pacific owns



Ridership





At Capacity Today



Bi-directional commute with riders standing on trains going southbound and northbound



Aging Fleet

Table 1.2: Caltrain Fleet Inventory

SERIES	QUANTITY	NUMBER OF SEATS	YEAR OF MANUFACTURE	MAKE	RETIRE DATE
Locomotives					
F40 PH-2	5	na	1985	GM - EMD	2015
F40PH-2-CAT	15	na	1985-1987	GM - EMD	2015-2017
F40 PH-2C	3	na	1998	Boise Locomotive	2026
MP36PH-3C	6	na	2003	Motive Power	2033
Passenger Cars					
Gallery Trailer	26	142	1985-1987	Nippon Sharyo	2015-2017
Gallery Trailer	16	148	1985-1987	Nippon Sharyo	2015-2017
Gallery Trailer	14	120	1999-2000	Nippon Sharyo	2030
Gallery Cab (Bike)	10	108	1985-1987	Nippon Sharyo	2015-2017
Gallery Cab (Bike)	6	78	1999-2000	Nippon Sharyo	2030
Gallery Cab (Bike)	21	97	1985	Nippon Sharyo	2015
Bi-Level Trailer*	16	149	1997	Bombardier	2027
Bi-Level Trailer	9	144	2002	Bombardier	2032
Bi-level Trailer (Bike)	2	114	2002	Bombardier	2032
Bi-level Trailer (Bike)	5	114	2001-2002	Bombardier	2031-2032
Bi-level Trailer (Bike)	2	114	2008	Bombardier	2038
Bi-level Trailer (Bike)	1	127	2002	Bombardier	2032
Bi-Level Trailer	6	140	2008	Bombardier	2038

*Trailers recently acquired from Metrolink with refurbishment ongoing.



At Retirement Age: 20/29 loco; 73/134 cars



CalMod

Regional Transportation Needs

- US 101 and Interstate 280 Congested
- Corridor supports growing economy
- 75% Caltrain riders commute to work
- 60% are choice riders



Genentech



facebook



SILICON VALLEY
LEADERSHIP GROUP

Google



Caltrain

CalMod

Project Description

Area	Project	Service
51 miles San Francisco to San Jose (Tamien Station)	<p>Electrification:</p> <ul style="list-style-type: none"> • Overhead Contact System (OCS) • Traction Power Facilities <p>Electric Trains (EMUs)</p> <ul style="list-style-type: none"> • 75 percent of fleet 	<p>Up to 79 mph</p> <p>Service Increase</p> <ul style="list-style-type: none"> • 6 trains / hour / direction • More station stops / reduced travel time • Restore Atherton & Broadway service <p>Mixed-fleet service (interim period)</p> <p>Continue tenant service</p> <ul style="list-style-type: none"> • ACE, Capital Corridor, Amtrak, Freight



Caltrain

CalMod

Service Benefits

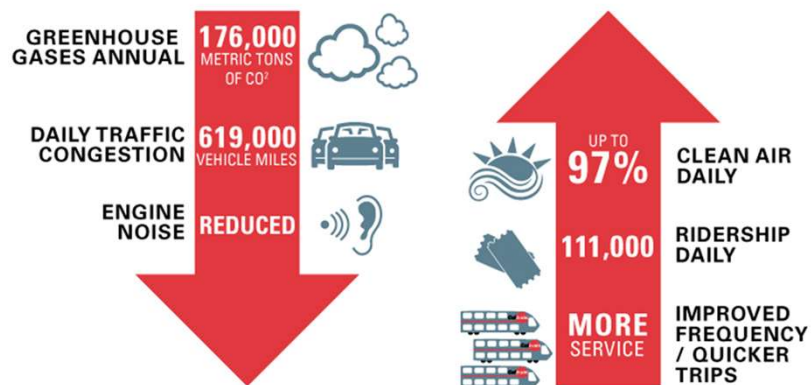
Metric	Today	PCEP
Example Baby Bullet Train		
Retain 5-6 stops	60 minutes	45 minutes
Retain SF to SJ 60 minutes	6 stops	13 stops
Example Redwood City Station		
Train stops / peak hour	3	5



Note: Prototypical Train and Schedule

**CalMod**

Key Regional Benefits (2040)



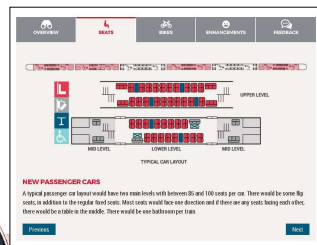
Note: 2013 BAC Report, generates \$2.5B economic activity and 9,600 jobs





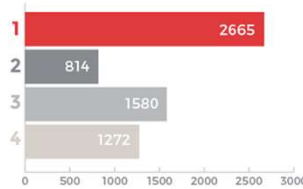
Electric Train

- 2016 Capacity Board Decision (bike to seat ratio, onboard bathrooms, upper doors ‘not precluded’)
- 2017 Design Progressing w/ Additional Public Input
 - Completed: Exterior design, Seat colors, Bike Storage, ADA restroom
- 2018 Virtual Reality 360 Tour



Electric Train Exterior Design Public Poll

EXTERIOR DESIGN POLL RESULTS
6331 TOTAL VOTES



CalMod

Electric Train Exterior Design

WINNING DESIGN: **OPTION 1****Caltrain****CalMod**

Electric Train Seat Design

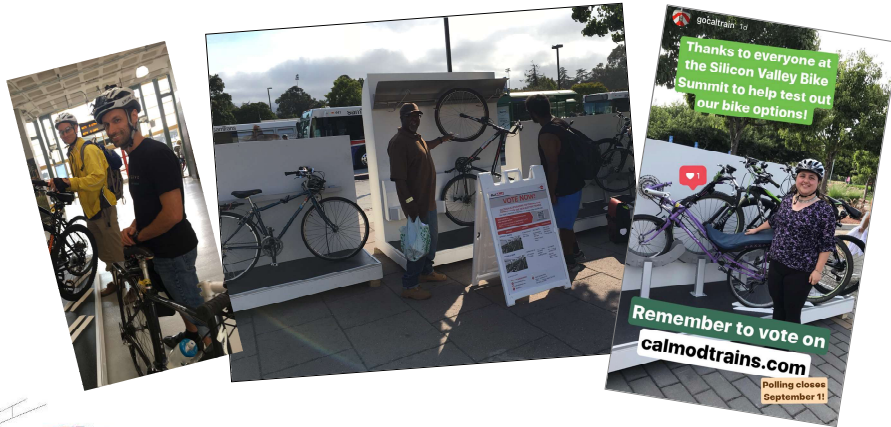
WINNING DESIGN: **OPTION B**SEAT POLL
RESULTS

2549 TOTAL VOTES

**Caltrain**

CalMod

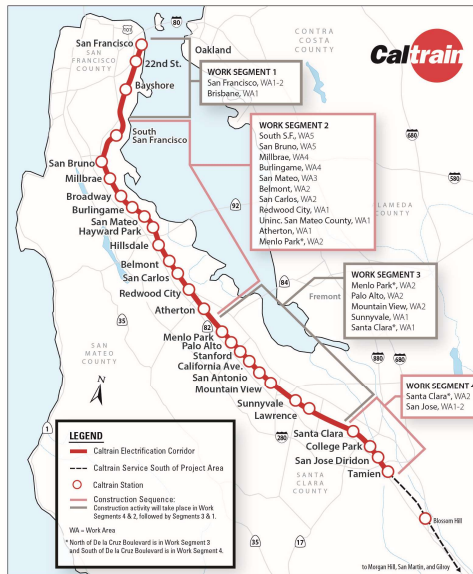
Electric Train Onboard Bike Storage Outreach



CalMod

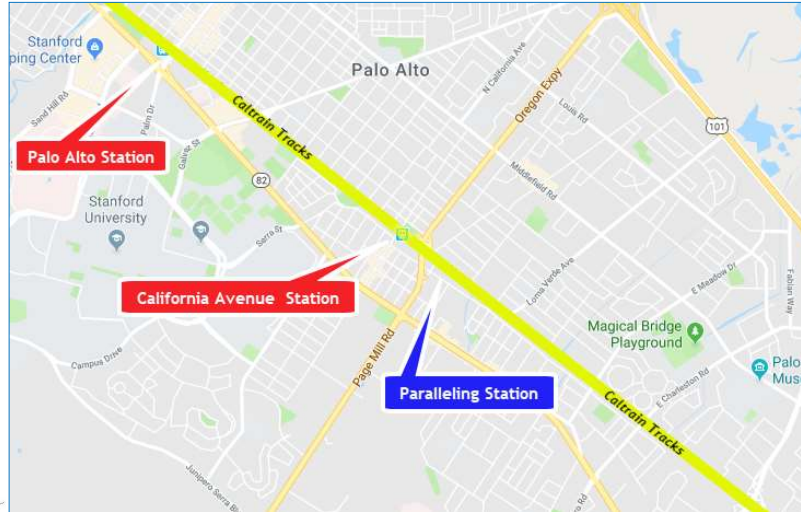
Construction Phasing

- 51 Miles Corridor
- 4 Work Segments
- 3,000 Poles
- 10 Traction Power Facilities





Palo Alto – Work Segment 3



Palo Alto Work Area 3.8 miles



Field Work Status

Pre-Construction Work Completed	<ul style="list-style-type: none"> • Utility Survey • Geotechnical Investigations • Disposal of Soil from Geotechnical Investigations • Soil Resistivity Testing • Site Surveys • Signal Cable Inspections
Pre-Construction Work In Progress	<ul style="list-style-type: none"> • Foundation Potholing
Future Work	<ul style="list-style-type: none"> • Tree Pruning and Removal • Foundation Installation • Overhead Contact System Pole Installation • Overhead Contact System Wire Installation • Paralleling Station



CalMod

Future Construction Activities

Palo Alto

Date	Work Activity	Expected Duration*
Summer/Fall 2018	Potholing	2-3 months
Fall 2018	Tree Pruning/Removal	2-3 months
Spring 2019	Foundation Installation	1-2 months
Summer 2019	Pole/Wire Installation	4-5 months
Summer / Fall 2019	Paralleling Station Construction	6-8 months



*Expected duration indicates first and last day of activity.
Number of actual work days will be fewer.

**CalMod**

Potholing

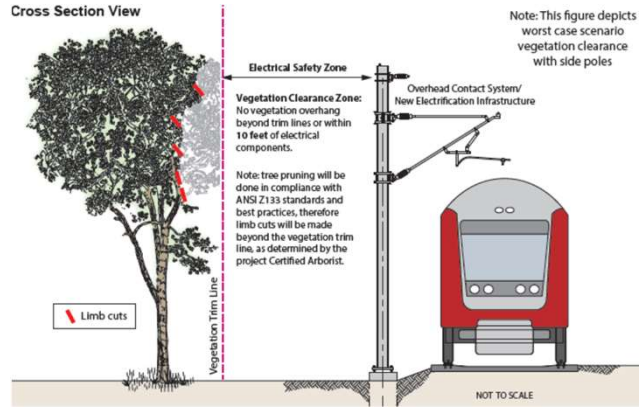


Approx. 263 Potholes in Palo Alto





Tree Pruning and Replacement



Vegetation cleared for Electrical Safety Zone



City of Palo Alto: Tree Pruning and Replacement Plan

City of Palo Alto			
	Caltrain Right of Way	Public Property	Private Property
Trees Removed	52	5	0
Trees Pruned >25%	53	10	0
Trees Pruned <25%	228	91	38
120 Trees will be replaced per the Palo Alto Tree Replacement Plan			



Note: Information may change as the design progresses



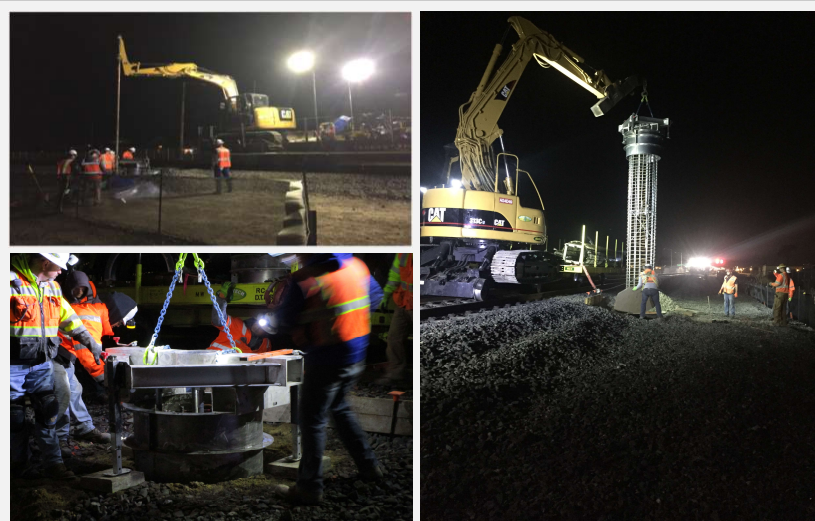
CalMod

Foundation Construction

- Excavation
- Rebar and Anchor Installation
- Electrical Grounding
- Concrete Fill

**Caltrain****CalMod**

Foundation Installation



On Track Equipment

Caltrain

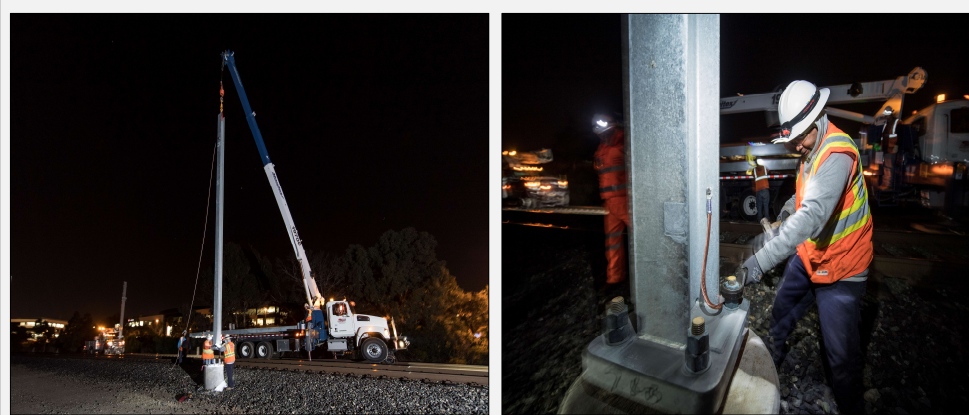
CalMod

Pole Installation

- 3,000 Installed throughout Corridor
 - Approx. 196 poles in Palo Alto
- Pole Height: 30-45.5'
- Pole Spacing: ~180' apart

**Caltrain****CalMod**

Pole Installation



Current Pole Installation

Caltrain

CalMod

Stringing Wire



On-track Equipment

Caltrain**CalMod**

Traction Power Facilities

- 10 Traction Power Facilities Installed throughout Corridor
 - 1 Paralleling Station in Palo Alto
 - Gantry structures up to 50'
- Provides electrical power to trains through the Overhead Contact System
- Unmanned station
- Day and weekend construction work
- Limited night work during construction

**Caltrain**

CalMod

Construction Impacts

- Work will occur during day and night
- Some 24 hour weekend work
- Crews will utilize acoustical barrier blankets and position lights away from homes
- Dedicated hotline for construction complaints

**Caltrain****CalMod**

San Francisco Tunnel Work

- Within the four San Francisco Tunnels:
 - Overhead Contact System Installation
 - Grouting and Notching
 - Drainage and Track Work
- September 2018 through March 2019

**Caltrain**


CalMod**Caltrain Service During Tunnel Work**

- Weekends - Oct 6, 2018 to March 17, 2019
 - Caltrain service north of the Bayshore Station will be suspended on the weekends
 - Bus service will be provided from Bayshore to 4th and King and 22nd Street stations
- Weekday service will remain unchanged
- Caltrain service south of Bayshore will remain unchanged
- Bus schedule will be available in September

**CalMod****Public Outreach**


- Subscribe to Weekly Updates
 - Visit www.calmod.org
- Additional Community Meetings
 - Pole and Wire Installation
 - Paralleling Station Construction
- Social Media
- Construction Outreach Office



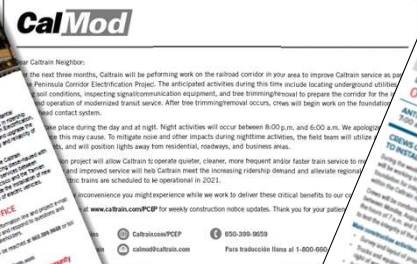


Public Outreach

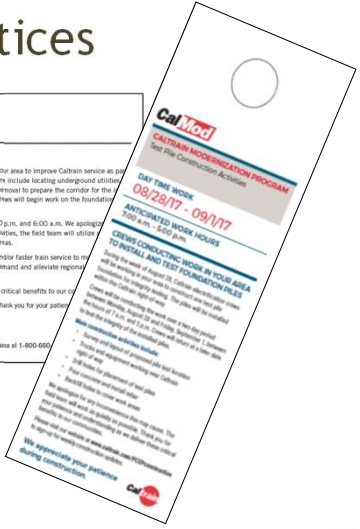
Physical Notices






Peninsula Corridor Electrification
ELECTRIFICATION - GROUNDWORK
SCOTT STREET CLOSURE NOTICE | March 2018




CalMod





CalMod
CALTRAIN MODERNIZATION PROGRAM
Fast Track Construction Activities
FAST TRACK WEEK
08/28/17 - 09/1/17
ANTICIPATED WORK HOURS
7:00 a.m. - 5:00 a.m.
CRUISE CONDUCTING WORK IN YOUR AREA
TO INSTALL AND TEST FOUNDATION PILES







CALMOD CONTACT INFORMATION


WEBSITE  CalMod.org

EMAIL  CalMod@caltrain.com

PHONE  650-399-9659
800-660-4287 (Toll Free)

OFFICE  2121 S. El Camino, Suite A-100
San Mateo, CA 94403
9 a.m. - 5 p.m. Monday - Friday

FACEBOOK  www.facebook.com/caltrain

TWITTER  @caltrain

