

# CALTRAIN ELECTRIFICATION



## CENTRAL EXPRESSWAY at RENGSTORFF AVE. to FARLEY ST. LANE CLOSURE NOTICE | May 2020

### UPCOMING ACTIVITIES AND LANE CLOSURE

On May 1 and May 4 through 6, Caltrain will be performing foundation installation work in Mountain View that will require the temporary closure of the right southbound lane of the Central Expressway at Rengstorff Avenue and Farley Street. The temporary lane closure is required due to construction equipment and crews entering and exiting the Caltrain right-of-way from the Central Expressway.

**Work will take place on May 1, and May 4 through 6, between 9:00 am to 3:00 pm.**

Construction signs and an illuminated directional sign will direct the merging of southbound vehicle traffic from the right lane into the left southbound lane of the Central Expressway. Flaggers will be present at the entrance/exit gate at the Caltrain right-of-way south of Rengstorff Avenue and north of Farley Street to assist the directing of traffic and construction equipment entering and exiting the Caltrain right-of-way from the Central Expressway.

A lane closure map is provided on the reverse of this notice for vehicle and bicycle traffic.

### CONSTRUCTION ACTIVITIES

During the closure, crews will install concrete foundations for Caltrain Electrification. Work will consist of excavation, placement of rebar, concrete fill, electrical grounding and the installation of foundations.

Crews will also be working along the Caltrain corridor to install foundations outside of the closure hours noted above. Work may take place during the day and at night, with night work occurring between 10 p.m. and 5 a.m. There may also be occasional 24-hour work on weekends.

Caltrain will work with contractors to minimize night work to limit the impact to surrounding communities; however, some work must be performed at night in order to maintain regular Caltrain service. To

mitigate noise and other impacts during night activities, the field team will utilize acoustical noise barrier blankets and will position lights away from residential and business areas.

Caltrain has established a dedicated project hotline and email for residents concerned about these potential impacts.

### PROJECT OVERVIEW

Over the last decade, Caltrain has experienced a substantial increase in ridership and anticipates further increases in ridership demand as the Bay Area's population grows. Caltrain Electrification, scheduled to be operational by 2022, will electrify and upgrade the performance, operating efficiency, capacity, safety and reliability of Caltrain's commuter rail service.

Caltrain electrification is a key component of the Caltrain Modernization Program and consists of replacing diesel-hauled with an electric train system for services between Fourth and King Street Station in San Francisco and the Tamien Station in San Jose. The project will include the installation of new electrical infrastructure and the purchase of electric trains.

### CONTACT INFORMATION

Caltrain has established a project information line and project e-mail for Caltrain Electrification to record and respond to questions and comments from residents and stakeholders.


The project information line can be reached at **650.399.9659** or toll free at **800.660.4287**.

The project e-mail is [calmod@caltrain.com](mailto:calmod@caltrain.com)

Sign up for weekly construction updates can be found online at: [www.calmod.org/get-involved](http://www.calmod.org/get-involved)


#### FOR MORE INFORMATION

 [calmod.org](http://calmod.org)

 Para traducción llama al 1.800.660.4287  
如需翻譯,請電 1.800.660.4287  
Cần dịch thuật, xin gọi 1.800.660.4287

#### CONTACT

MAIL: 2121 S. El Camino Real, Suite 300  
San Mateo, CA 94403

 650.399.9659

 [calmod@caltrain.com](mailto:calmod@caltrain.com)

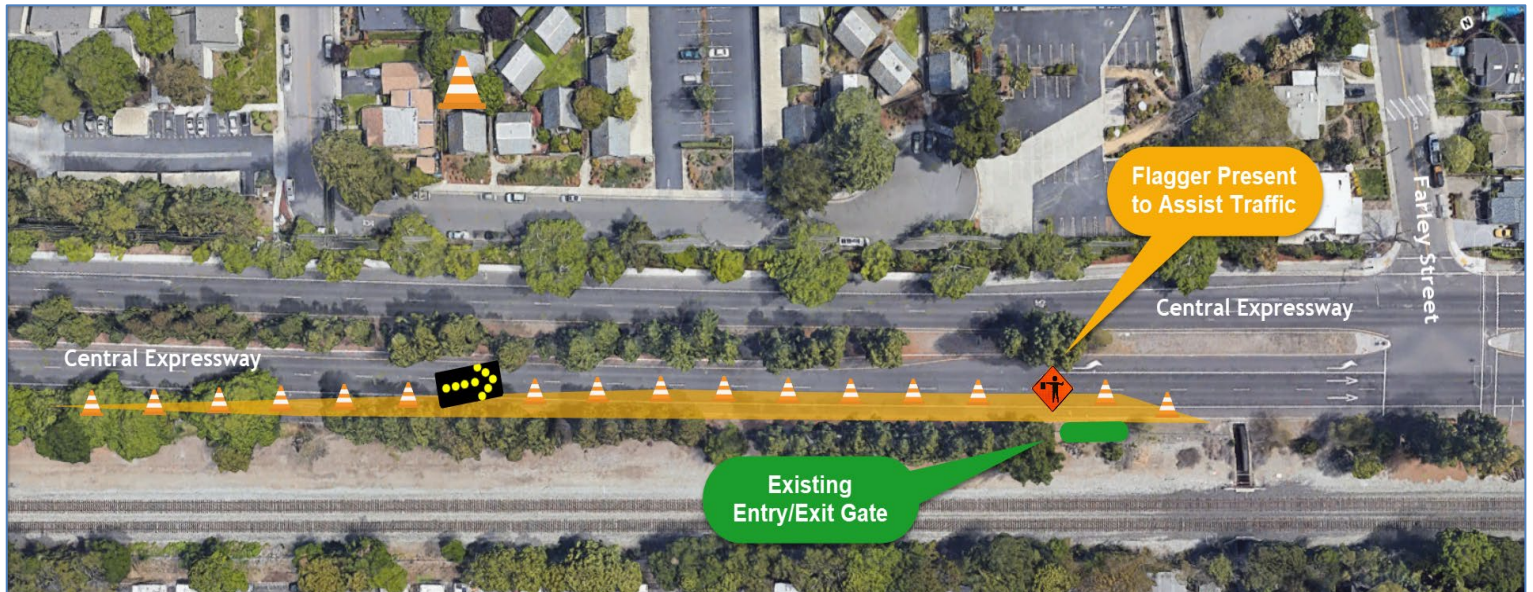
# Caltrain Electrification Project

## CENTRAL EXPRESSWAY at RENGSTORFF AVE. to FARLEY ST. LANE CLOSURE NOTICE | May 2020

### WORK AREA RENGSTORFF AVENUE




### WORK AREA FARLEY STREET



**THERE WILL BE NO WEEKEND WORK DURING THE CONSTRUCTION PERIOD**



#### FOR MORE INFORMATION

 [calmod.org](http://calmod.org)

 Para traducción llama al 1.800.660.4287  
如需翻譯,請電 1.800.660.4287  
Cán dịch thuật, xin gọi 1.800.660.4287

#### CONTACT

MAIL: 2121 S. El Camino Real, Suite 300  
San Mateo, CA 94403

 650.399.9659  
 [calmod@caltrain.com](mailto:calmod@caltrain.com)

