

CALTRAIN ELECTRIFICATION



MARY AVENUE CLOSURE NOTICE | April 2020

UPCOMING ACTIVITIES AND CLOSURE

On the evening of April 17, Caltrain will be performing foundation installation work that will require a temporary closure of the Mary Avenue railroad crossing to vehicle traffic.

From 10 p.m. on April 17 to 5:30 a.m. on April 18 there will be a temporary closure of the Mary Avenue railroad crossing.

Illuminated and directional signs will direct vehicle traffic to Matilda Avenue as a detour on the night of the closure. The north and south crosswalks on Mary Avenue will remain open for pedestrians and bicyclists during construction. Flagmen will be present to assist pedestrians and bicyclists crossing the railroad tracks.

During construction, crews will provide crossing access to Emergency First Responders.

Detour maps are provided on the reverse of this notice for vehicle, pedestrian, and bicyclist traffic.

CONSTRUCTION ACTIVITIES

During the closure, crews will install concrete foundations for Caltrain Electrification. Work will consist of excavation, placement of rebar, concrete fill, electrical grounding and the installation of foundations. Crews will utilize on-track equipment that requires the temporary closure of the above railroad crossing.

Crews will also be working along the Caltrain corridor to install foundations outside of the closure hours noted above. Work may take place during the day and at night, with night work occurring between 10 p.m. and 5 a.m. There may also be occasional 24-hour work on weekends.

Caltrain will work with contractors to minimize night work to limit the impact to surrounding communities; however, some work must be performed at night in order to maintain regular Caltrain service. To mitigate noise and other impacts during night and weekend activities, the field team will utilize acoustical noise barrier blankets and will position lights away from residential and business areas. Caltrain has established a dedicated project hotline and email for residents concerned about these potential impacts.

PROJECT OVERVIEW

Over the last decade, Caltrain has experienced a substantial increase in ridership and anticipates further increases in ridership demand as the Bay Area's population grows. Caltrain Electrification, scheduled to be operational by 2022, will electrify and upgrade the performance, operating efficiency, capacity, safety and reliability of Caltrain's commuter rail service.

Caltrain Electrification is a key component of the Caltrain Modernization Program and consists of replacing diesel-hauled with an electric train system for services between Fourth and King Street Station in San Francisco and the Tamien Station in San Jose. The project will include the installation of new electrical infrastructure and the purchase of electric trains.

CONTACT INFORMATION

Caltrain has established a project information line and project e-mail for Caltrain Electrification to respond to questions and comments from residents and stakeholders.

The project information line can be reached at **650.399.9659** or toll free at **800.660.4287**.

The project e-mail is calmod@caltrain.com

In addition, Caltrain has established a community outreach office at:

2121 S. El Camino Real
Suite A-100
San Mateo, CA 94403

A project representative will be available to answer questions in person by appointment Mondays through Fridays during construction.

Sign up for weekly construction updates at:
www.calmod.org/get-involved

FOR MORE INFORMATION

 calmod.org

Para traducción llame al 1.800.660.4287
如需翻譯請電 1.800.660.4287
Cần dịch thuật, xin gọi 1.800.660.4287

CONTACT

MAIL: 2121 S. El Camino Real, Suite 300
San Mateo, CA 94403

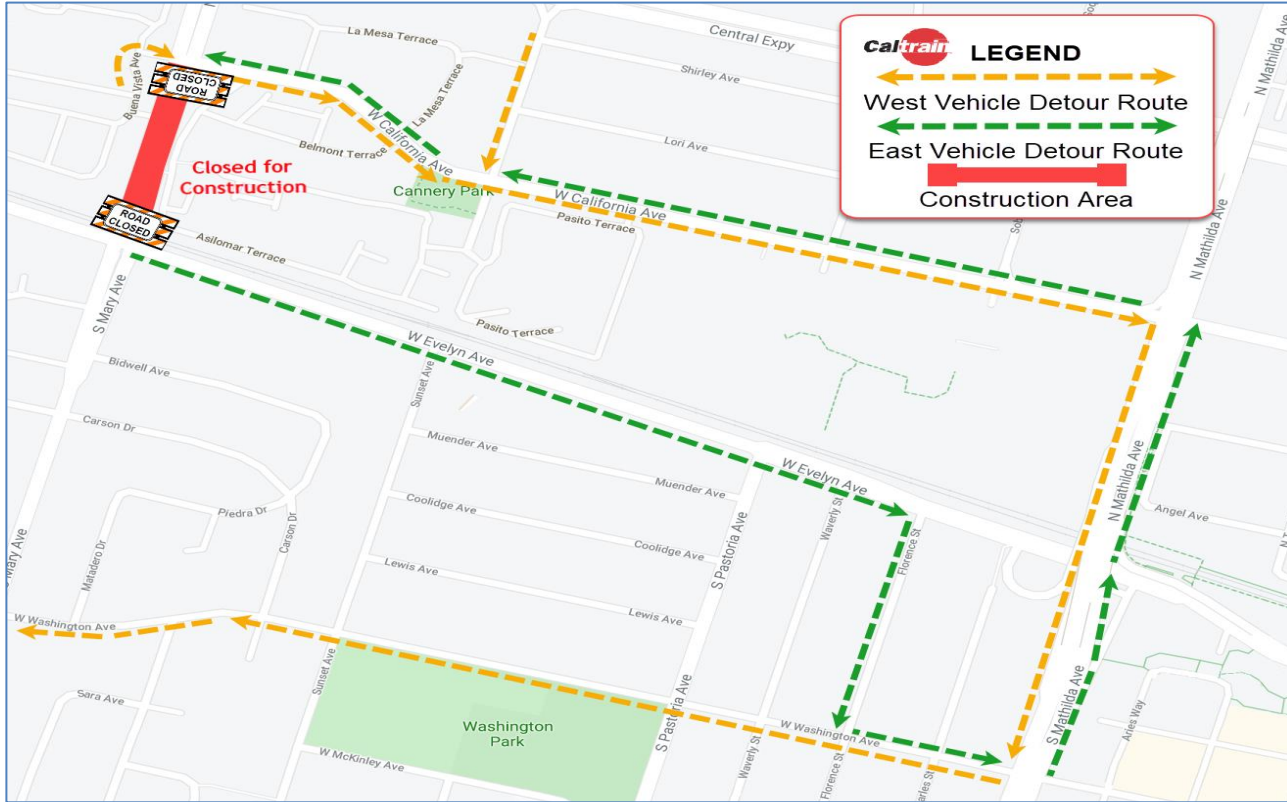
 650.399.9659

 calmod@caltrain.com

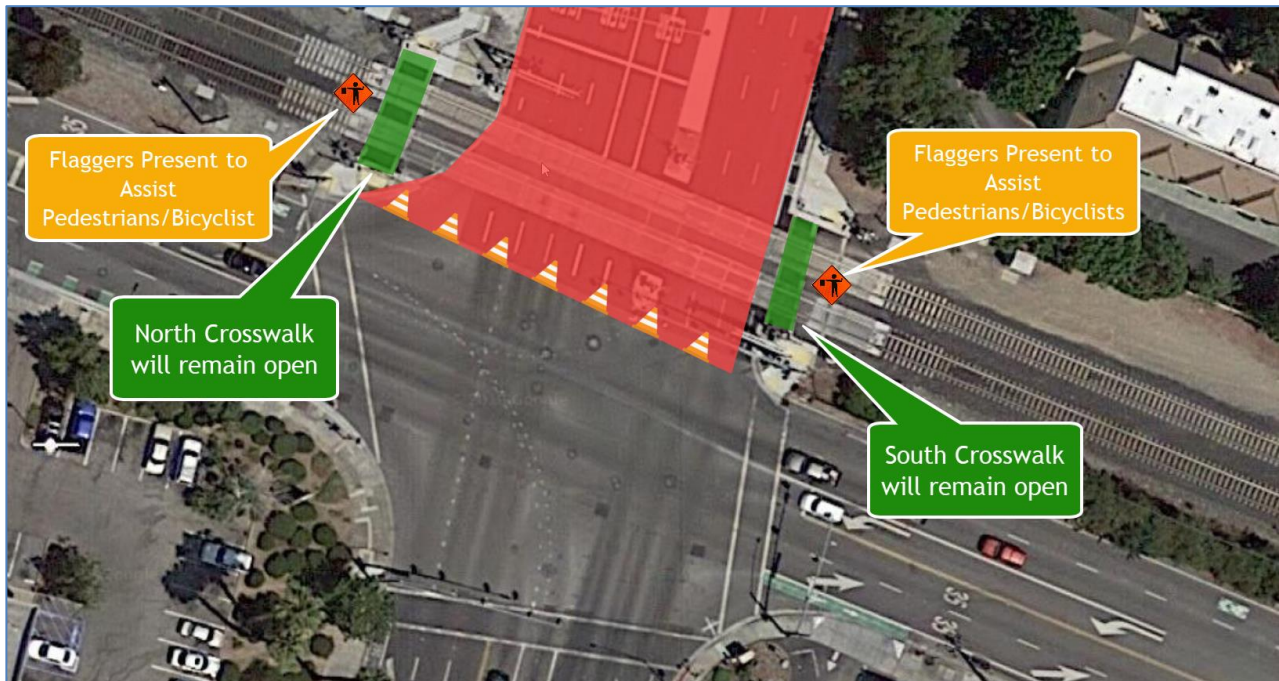
CALTRAIN ELECTRIFICATION

MARY AVENUE CLOSURE NOTICE | April 2020

WORK AREA DETOUR MAP – VEHICLES



WORK AREA DETOUR MAP – PEDESTRIANS



FOR MORE INFORMATION



calmod.org

Para traducción llama al 1.800.660.4287

如需翻譯請電 1.800.660.4287

Cần dịch thuật, xin gọi 1.800.660.4287

CONTACT

MAIL: 2121 S. El Camino Real, Suite 300
San Mateo, CA 94403



650.399.9659



calmod@caltrain.com

