

Peninsula Corridor Electrification

Creates Thousands of Jobs and Supports Continued Productivity

Change is coming
The future is now

CalMod

CONVENIENCE
Increased Service Frequency and Reduced Travel Time

SUSTAINABILITY
Improved Air Quality
Reduced Regional Traffic Congestion



CAPACITY
Accommodates More Riders
Permits New Experiences

AUZERAI AVENUE CLOSURE NOTICE | February 2019

UPCOMING ACTIVITIES AND CLOSURES

Between the period of February 28 to March 2, Caltrain will be performing potholing work in San Jose that will require a partial closure of the Auzerais Avenue railroad crossing to vehicle and pedestrian traffic.

The Auzerais Avenue railroad crossing will be temporarily closed for two (2) nights from 8 p.m. to 6 a.m. between February 28 and March 2.

Auzerais Avenue will be partially closed during construction which will require illuminated flaggers to be present for traffic control.

Illuminated and directional signs will direct vehicle traffic to use either the eastbound lane or westbound lane of Auzerais Avenue as a detour on the night of the closure. Temporary crosswalks will be installed for pedestrian traffic.

Vehicle and pedestrian detour maps are provided on the reverse of this notice.

CONSTRUCTION ACTIVITIES

During the closures, crews will conduct duct bank trenching to install signal cable for Caltrain Electrification. Work will consist of excavation, potholing, cutting of asphalt and concrete, conduit installation, and excavation restoration. Construction activities require the temporary crossing closures to comply with safety regulations.

Work may take place during the day and at night, with night work occurring 8 p.m. and 6 a.m. No work will be conducted during the weekends.

Caltrain will work with contractors to minimize night work to limit the impact to surrounding communities; however, some work must be performed at night in order to maintain regular Caltrain service. To mitigate noise and other impacts during night activities, the field team will utilize acoustical noise barrier blankets and will position lights away from residential and business areas. Caltrain has established a dedicated project hotline and email for residents concerned about these potential impacts.

PROJECT OVERVIEW

Over the last decade, Caltrain has experienced a substantial increase in ridership and anticipates further increases in ridership demand as the Bay Area's population grows. Caltrain Electrification, scheduled to be operational by 2022, will electrify and upgrade the performance, operating efficiency, capacity, safety and reliability of Caltrain's commuter rail service.

Caltrain electrification is a key component of the Caltrain Modernization Program and consists of replacing diesel-hauled with an electric train system for services between Fourth and King Street Station in San Francisco and the Tamien Station in San Jose. The project will include the installation of new electrical infrastructure and the purchase of electric trains.

CONTACT INFORMATION

Caltrain has established a project information line and project e-mail for Caltrain Electrification to record and respond to questions and comments from residents and stakeholders.

The project information line can be reached at **650.399.9659** or toll free at **800.660.4287**.

The project e-mail is calmod@caltrain.com

In addition, Caltrain has established a community outreach office at:

2121 S. El Camino Real
Suite A-100
San Mateo, CA 94403

A project representative will be available to answer questions in person from 9:00 a.m. and 5:00 p.m. Mondays through Fridays during construction.


Sign up for weekly construction updates can be found online at: www.calmod.org/get-involved

FOR MORE INFORMATION

 calmod.org

CONTACT

MAIL: 2121 S. El Camino Real, Suite 300
San Mateo, CA 94403

 650.399.9659

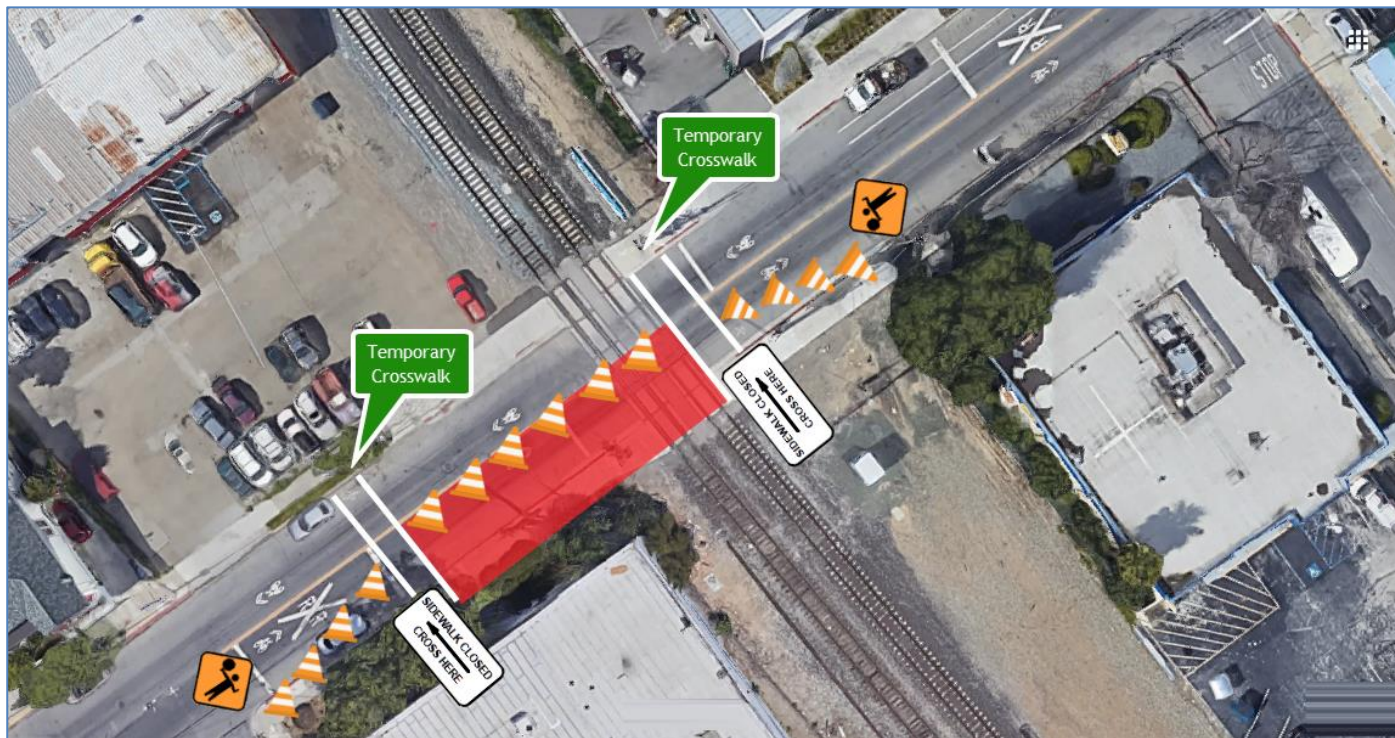
 calmod@caltrain.com



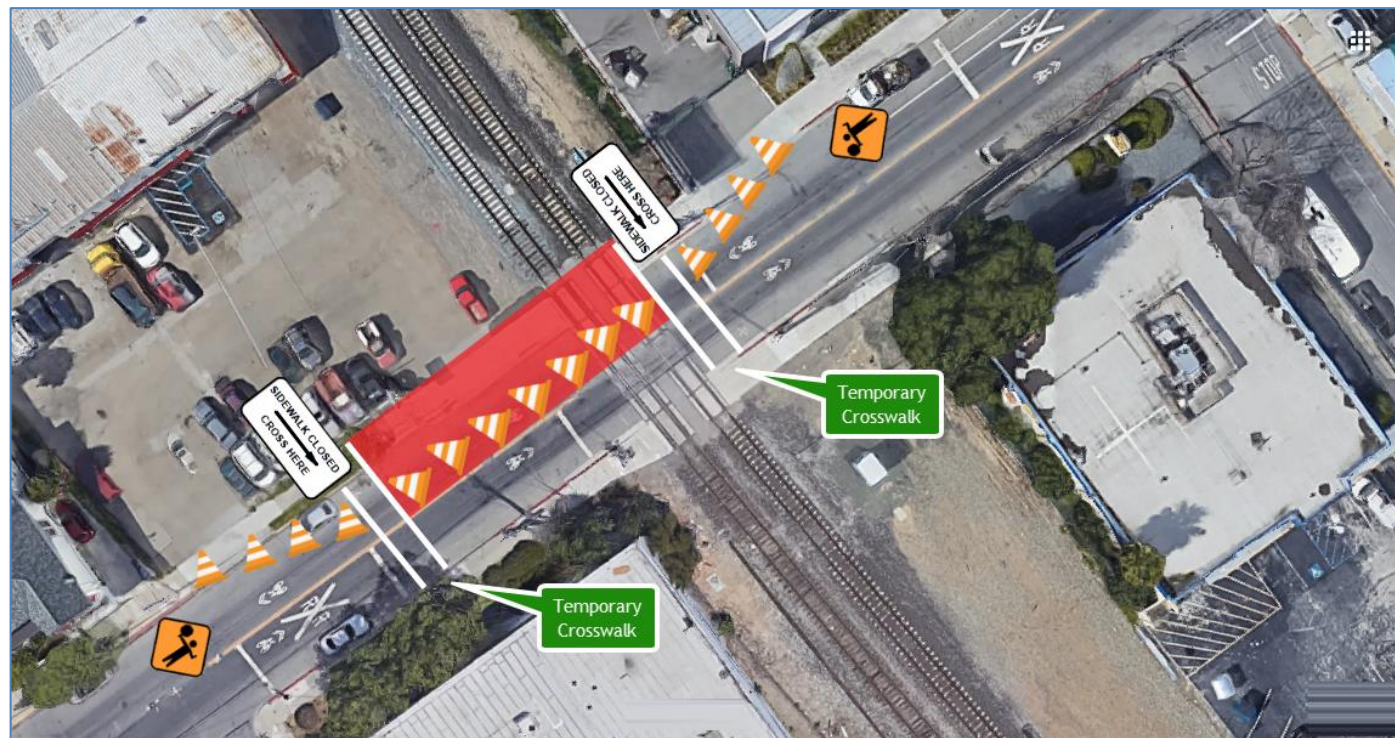
Peninsula Corridor Electrification

AUZERAI AVENUE CLOSURE NOTICE | February 2019


DETOUR MAP - EASTBOUND CLOSURE



DETOUR MAP - WESTBOUND CLOSURE





FOR MORE INFORMATION

 calmod.org

CONTACT

MAIL: 2121 S. El Camino Real, Suite 300
San Mateo, CA 94403

 650.399.9659
 calmod@caltrain.com

