

CALTRAIN ELECTRIFICATION



1st AND 2nd AVENUES at RAILROAD AVENUE LANE CLOSURE NOTICE | November, 2021

UPCOMING ACTIVITIES AND LANE CLOSURE

On November 11, Caltrain will be performing potholing and signal pad installation work that will require a partial lane closure of the 1st Avenue railroad crossing, followed by a partial lane closure of the 2nd Avenue Railroad crossing to vehicle traffic. The temporary lane closures are required due to construction equipment and crews entering and exiting the Caltrain right-of-way at 1st and 2nd Avenues. Crews will also be trenching across the street from the tracks to reach the signal house.

Work will take place at 1st Avenue from November 11 to 26 between 7 a.m. and 3:30 p.m.

Work will take place at 2nd Avenue from November 11 to 26 between 7 a.m. and 3:30 p.m.

1st Avenue and then 2nd Avenue will be partially closed during construction which will require flaggers to be present for traffic control. Weekend work will not be required.

Directional signs will direct vehicle and bicycle traffic to use the eastbound lane of 1st Avenue as a detour during construction. Crosswalks on the north and south side of 1st Avenue will remain open for pedestrian traffic.

After the work at 1st Avenue, portions of S. Railroad Avenue at 2nd Avenue will also be closed to vehicle traffic. Directional signs will direct vehicle traffic to use S. Claremont Street or S. B Street as a detour during construction.

A lane closure map is provided on the reverse of this notice for vehicle and bicycle traffic.

CONSTRUCTION ACTIVITIES

During the closure, crews will be performing potholing and pad installation work for Caltrain Electrification. Work will consist of using a vacuum truck to remove and replace dirt to verify foundations can be installed in designated areas along the Caltrain right-of-way. Crews will also be digging a trench across the street from the tracks to reach the signal house. Crews will utilize off-track equipment that requires the temporary westbound lane closures.

Crews will also be working along the Caltrain corridor to install foundations outside of the closure hours noted above. Work may take place during the day and at night, with night work occurring between 9 p.m. and 6 a.m. There may also be occasional 24-hour work on weekends.

Caltrain will work with contractors to minimize night work to limit the impact to surrounding communities; however, some work must be performed at night in order to maintain regular Caltrain service. To mitigate noise and other impacts during night activities, the field team will utilize acoustical noise barrier blankets and will position lights away from residential and business areas. Caltrain has established a dedicated project hotline and email for residents concerned about these potential impacts.

PROJECT OVERVIEW

Over the last decade, Caltrain has experienced a substantial increase in ridership and anticipates further increases in ridership demand as the Bay Area's population grows. Caltrain Electrification, scheduled to be operational by 2024, will electrify and upgrade the performance, operating efficiency, capacity, safety, and reliability of Caltrain's commuter rail service.

Caltrain electrification is a key component of the Caltrain Modernization Program and consists of replacing diesel-hauled with an electric train system for services between Fourth and King Street Station in San Francisco and the Tamien Station in San Jose. The project will include the installation of new electrical infrastructure and the purchase of electric trains.

CONTACT INFORMATION

Caltrain has established a project information line and project e-mail for Caltrain Electrification to record and respond to questions and comments from residents and stakeholders.

The project information line can be reached at **650.399.9659** or toll free at **800.660.4287**.


The project e-mail is calmod@caltrain.com

Sign up for weekly construction updates can be found online at:

www.calmod.org/get-involved

FOR MORE INFORMATION

 calmod.org

 Para traducción llama al 1.800.660.4287
如需翻譯,請電 1.800.660.4287
Cần dịch thuật, xin gọi 1.800.660.4287

CONTACT

MAIL: 2121 S. El Camino Real, Suite 300
San Mateo, CA 94403

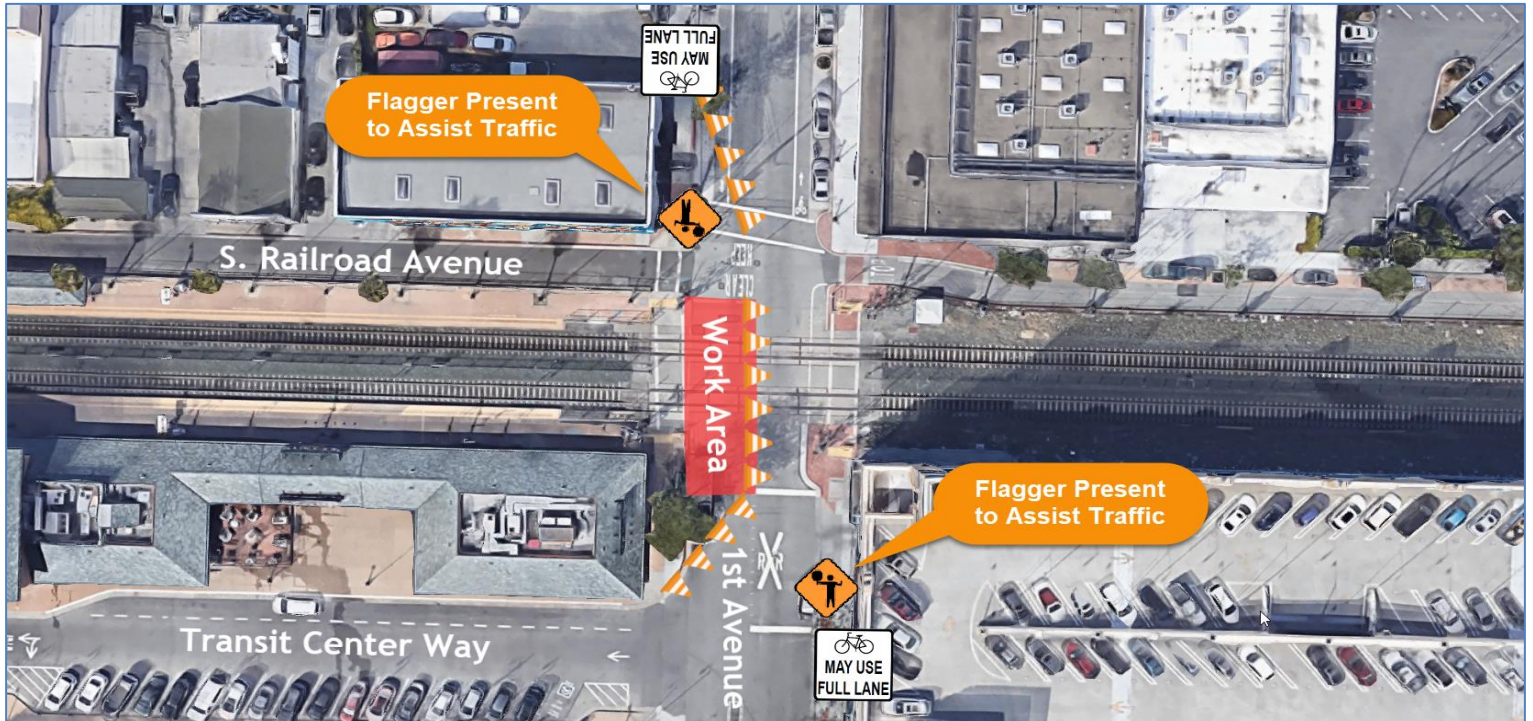
 650.399.9659

 calmod@caltrain.com

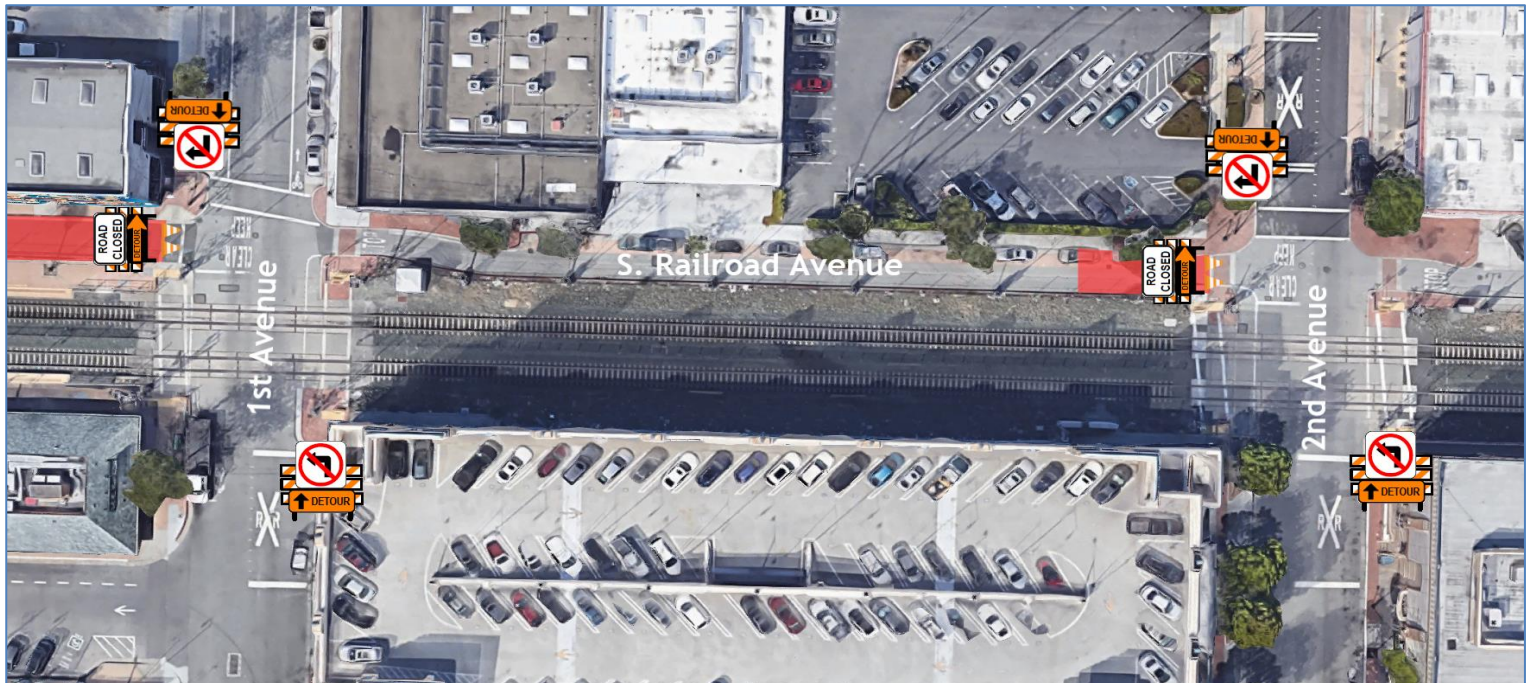
Caltrain Electrification Project

1st AVENUE LANE CLOSURE NOTICE | November, 2021

DETOUR MAP - 1ST AVENUE WESTBOUND CLOSURE




DETOUR MAP - S. RAILROAD AVENUE CLOSURE





FOR MORE INFORMATION

 calmod.org

 Para traducción llama al 1.800.660.4287
如需翻譯,請電 1.800.660.4287
Cần dịch thuật, xin gọi 1.800.660.4287

CONTACT

MAIL: 2121 S. El Camino Real, Suite 300
San Mateo, CA 94403

 650.399.9659
 calmod@caltrain.com

