



San Jose Diridon Station Planning Update

Board of Directors
March 1, 2018
Agenda Item 10

Overview

- San Jose Diridon Station Today
- City of San Jose Diridon Station Area Plan
- Agency Partnerships
- Integrated Station Concept Plan
- Next Steps

San Jose Diridon Station Today

San Jose Diridon Station Today

- JPB owns track/platforms; current bus loop and parking lots
- 9 station tracks with 5 platforms
- About 9,600 weekday Caltrain ridership
- Transportation Service Providers:
 - VTA Light Rail and Bus
 - Regional Rail: Altamont Corridor Express, Capitol Corridor, and Amtrak Coast Starlight
 - Regional Bus and Greyhound
 - Union Pacific Railroad

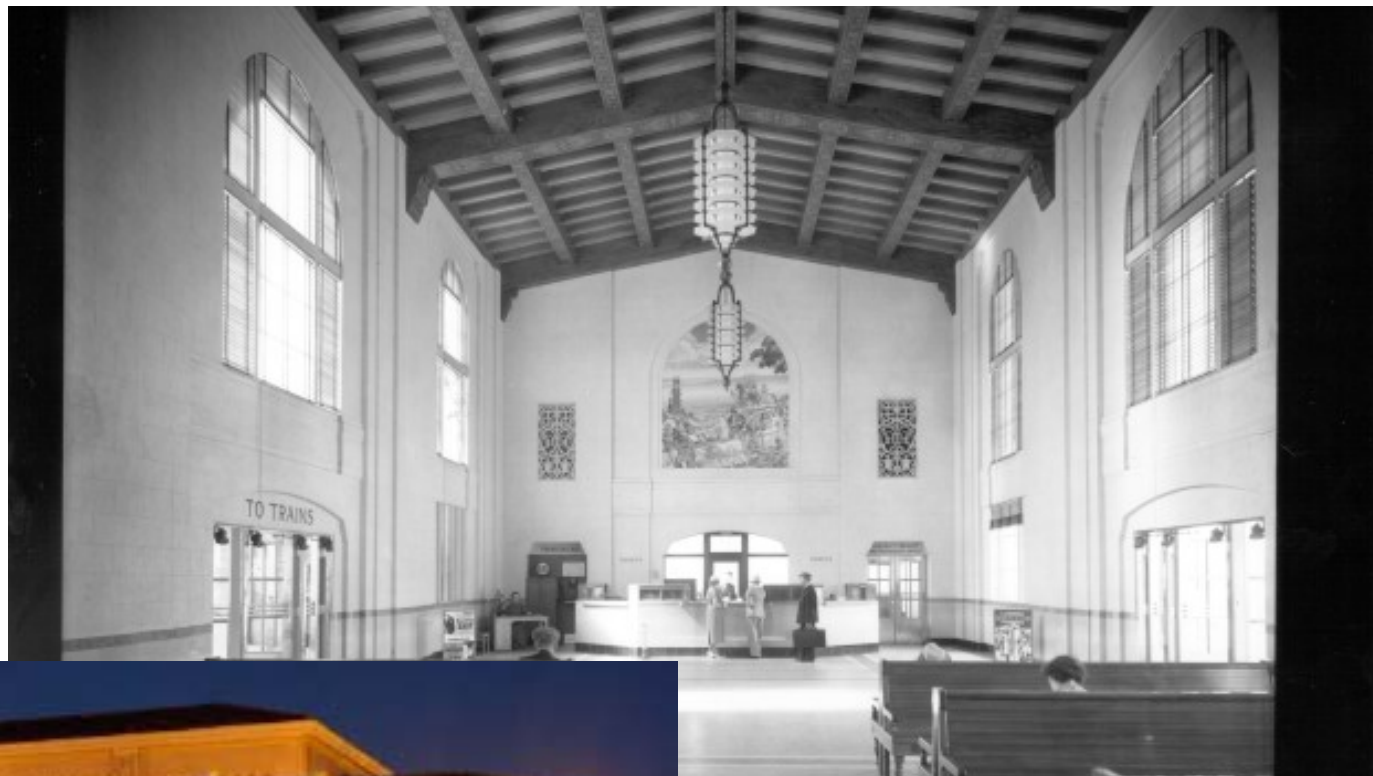


San Jose Diridon Today



San Jose Diridon Station Today

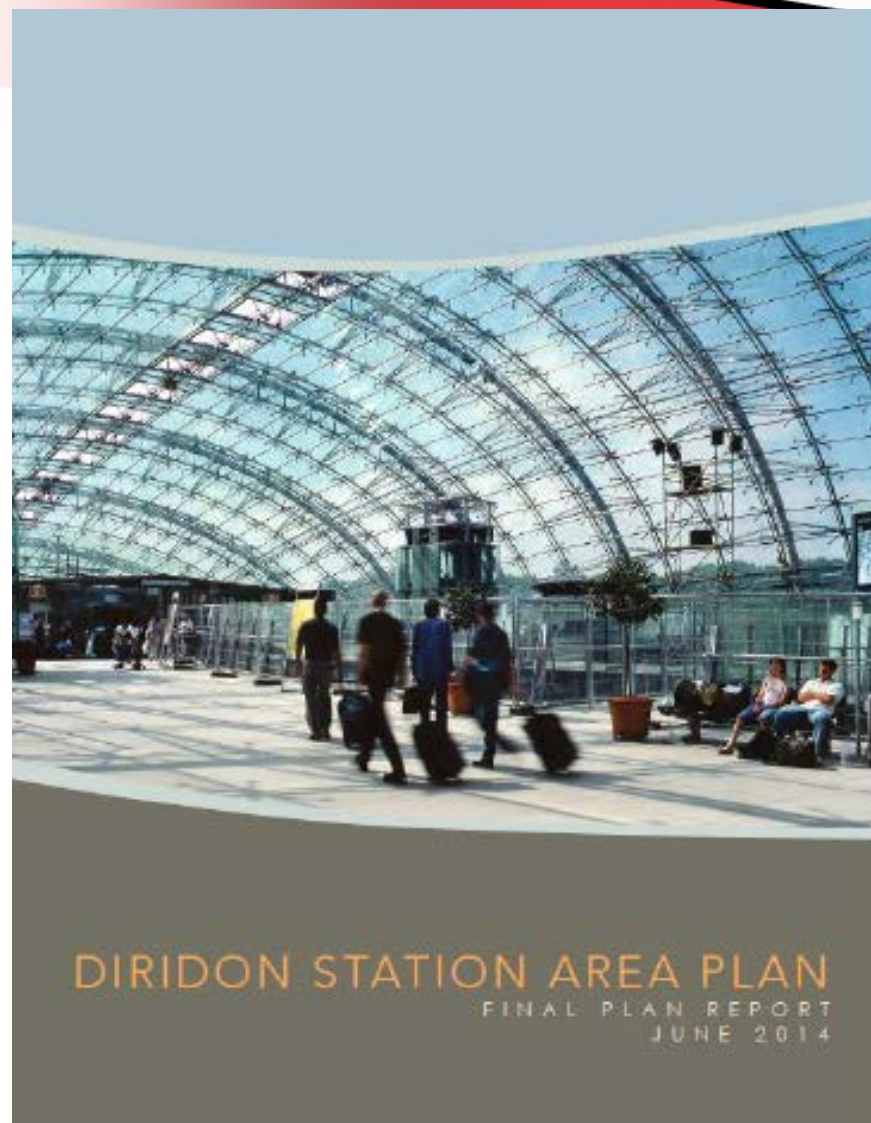
- Station Amenities:
 - Historic Passenger terminal building with main access onto Cahill Street and underground tunnel access to the platforms
 - Bike amenities (Lockers/Racks/Ford GoBike)
 - About 600 Caltrain passenger parking stalls (\$5 daily)
 - Loop in front of station for drop-off/pick-up, TNC/Taxi connections
 - Bathrooms; waiting areas/benches, ticket kiosks, and small retail spaces for purchasing food and beverages
 - Amtrak Customer Service



City of San Jose Station Area Plan

2014 Station Area Plan

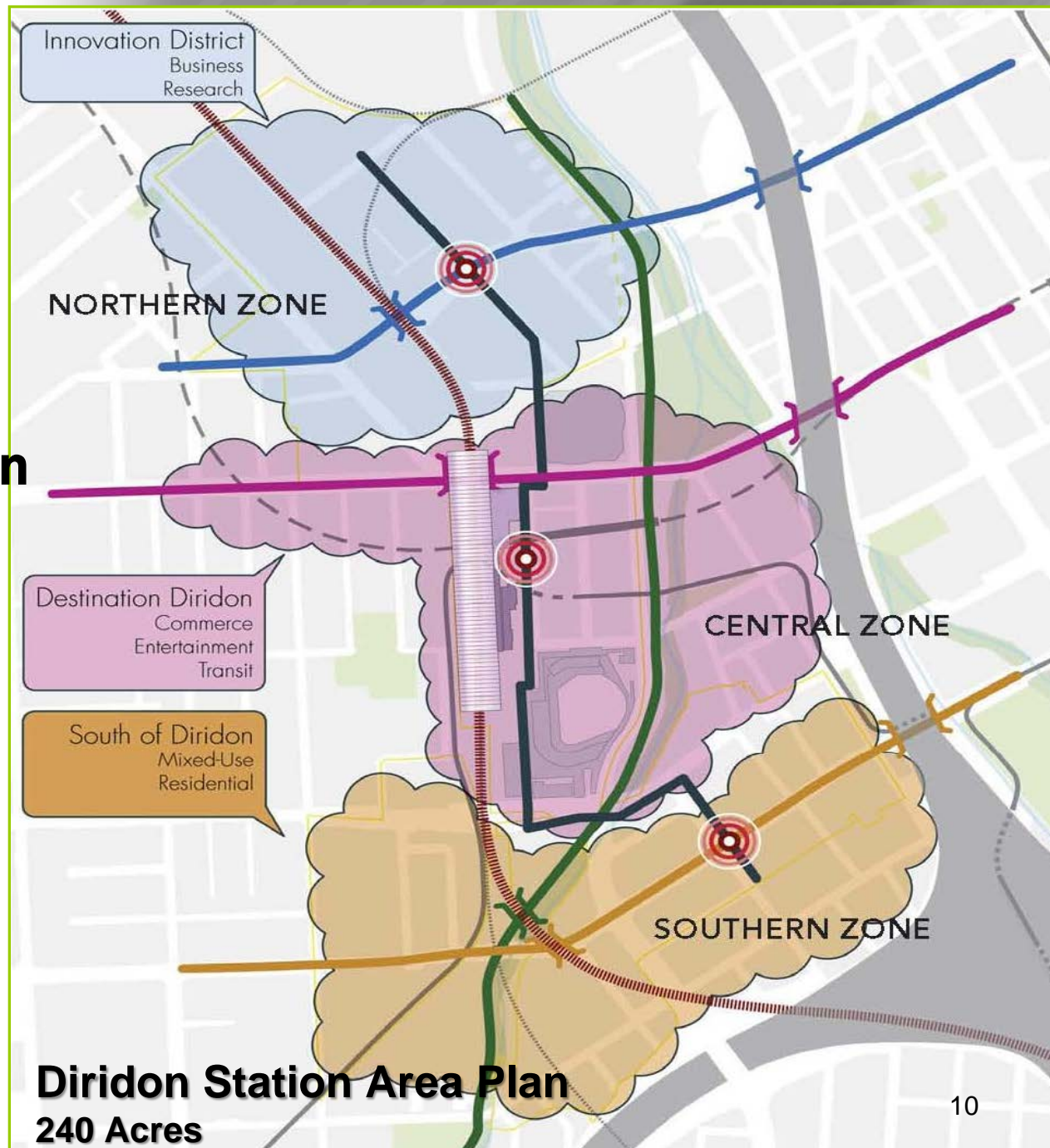
- Plan envisioned dividing the station area into three subareas with a variety of transit-supportive land uses
- Plan focused mostly on station area
- Sets Preferred Land Use
- Urban Design Guidelines and Place Making Strategy
- Addresses Access and Circulation



North: Innovation District

Central: Destination Diridon

South: **Mixed-use** **Residential**



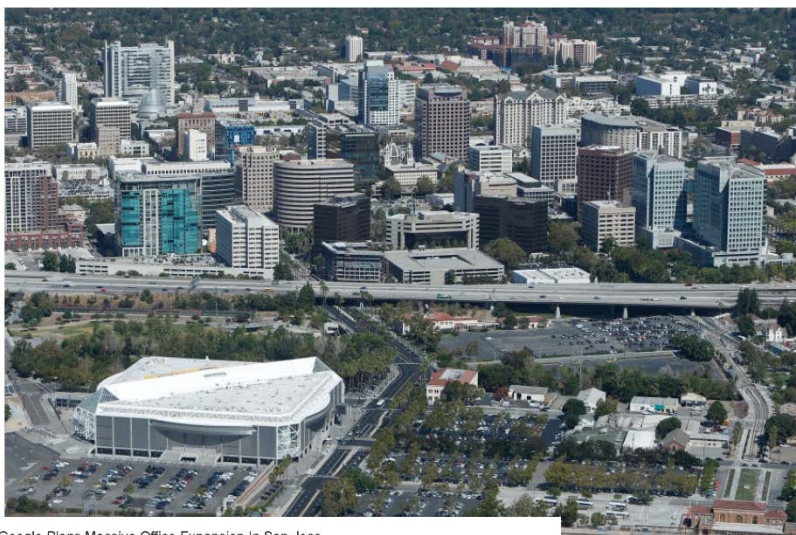
Google Announcement

The Mercury News Q

Business > Economy

Google, San Jose plan search giant's downtown expansion; up to 20,000 jobs possible

283



Google Plans Massive Office Expansion In San Jose

GOOGLE'S AREAS OF INTEREST

The company has been eyeing and buying properties with a plan to create a transit-oriented Google village in downtown San Jose.



- Parcels bought by Google/ Trammel Crow team
- City agency parcel sales being negotiated

Source: Santa Clara County property records, City of San Jose memos

BAY AREA NEWS GROUP

Agency Partnership



Agency Partnership



The San Jose Diridon Station and area will be developed through a strong collaboration between Caltrain, the California High Speed Rail Authority, the Santa Clara Valley Transportation Authority and the City of San Jose, that respects individual agency goals while maximizing long-term common good through transparency and cooperation

Planning for the Future

The San Jose Diridon Station **seamlessly connects** and serves all transportation modes and will be a **grand destination** for community and commerce. The San Jose Diridon Station will **inspire** private investment, be the center of a **vibrant** surrounding area and the gateway to Northern California

Partner Projects Converging

- Caltrain: Electrification and Business Plan
 - JPB, with Authority and rail operator tenants, responsible for rail operations and infrastructure planning
- California High Speed Rail
 - San Jose – Merced Project Section
 - 2018 Business Plan
- VTA: BART Phase 2 Extension
- City of San Jose: Station Area Development
- 2018 California State Rail Plan

Caltrain's Planning Framework

Infrastructure and Facilities planned in a manner that support:

- Blended Corridor System with California High Speed Rail
- Reliability and On-time Performance
 - Both Revenue and non-revenue services
- Recoverability, Contingency and Resiliency
- Future growth potential

Caltrain's Planning Framework

Consistency with 2018 State Rail Plan:

- Working toward 2040 Vision
 - 2022 projects are moving
 - 2027 timeframe
 - 2040 vision
- Integrated statewide rail networks
- Easy, fast connections
- High frequency service
- Customer focus to move easily within the network

All Modes Converge at Diridon Station

Planned Major Regional Rail Services San Jose Diridon-2026

 *HSR*



 *BART*



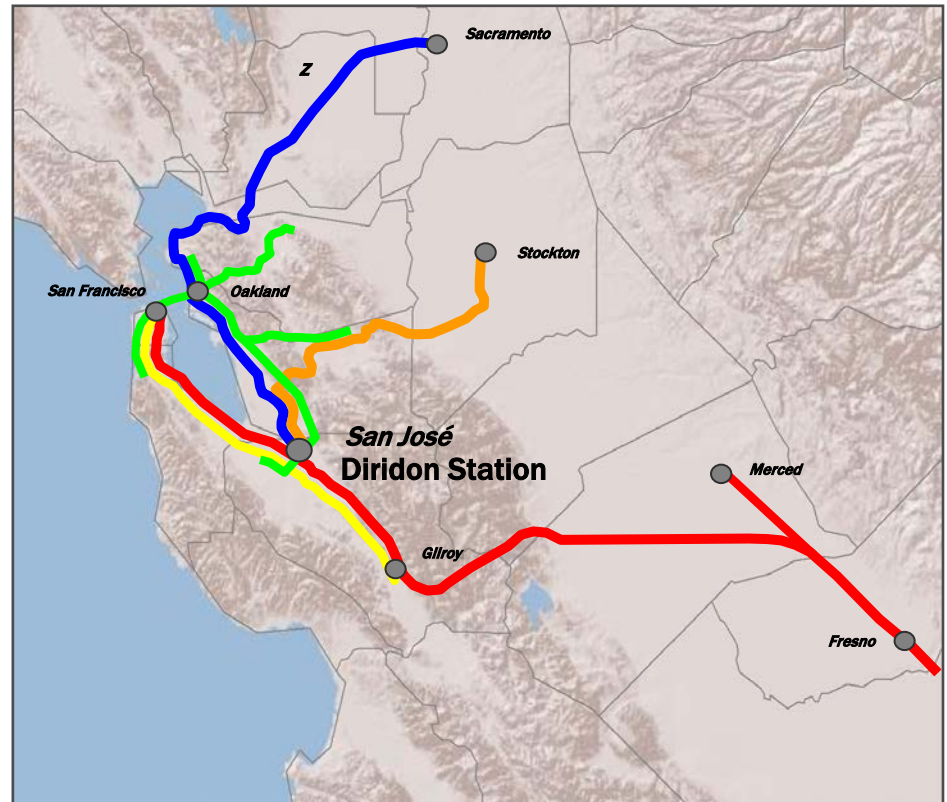
 *Caltrain*



 *ACE*



 *Capitol*



Lessons Learned

- July 2017 Stations Tour
 - Netherlands and France
- Aim big and bold
- Station design projects are “urban” (city-building) projects
- Design from the tracks out
- People-centered design
- Seamless intermodal connections

Rotterdam Station, Netherlands



Utrecht Station, Netherlands



Integrated Station Concept Plan

Agency Partner Guiding Principals

- Treat the station area as a singular, urban transit project rather than an overlap of several capital projects
- Focus on the interaction and cohesiveness between transit systems, public space, and private development
- Develop a robust integrated community engagement process by all stakeholders for station and station area development

Agency Partner Guiding Principals

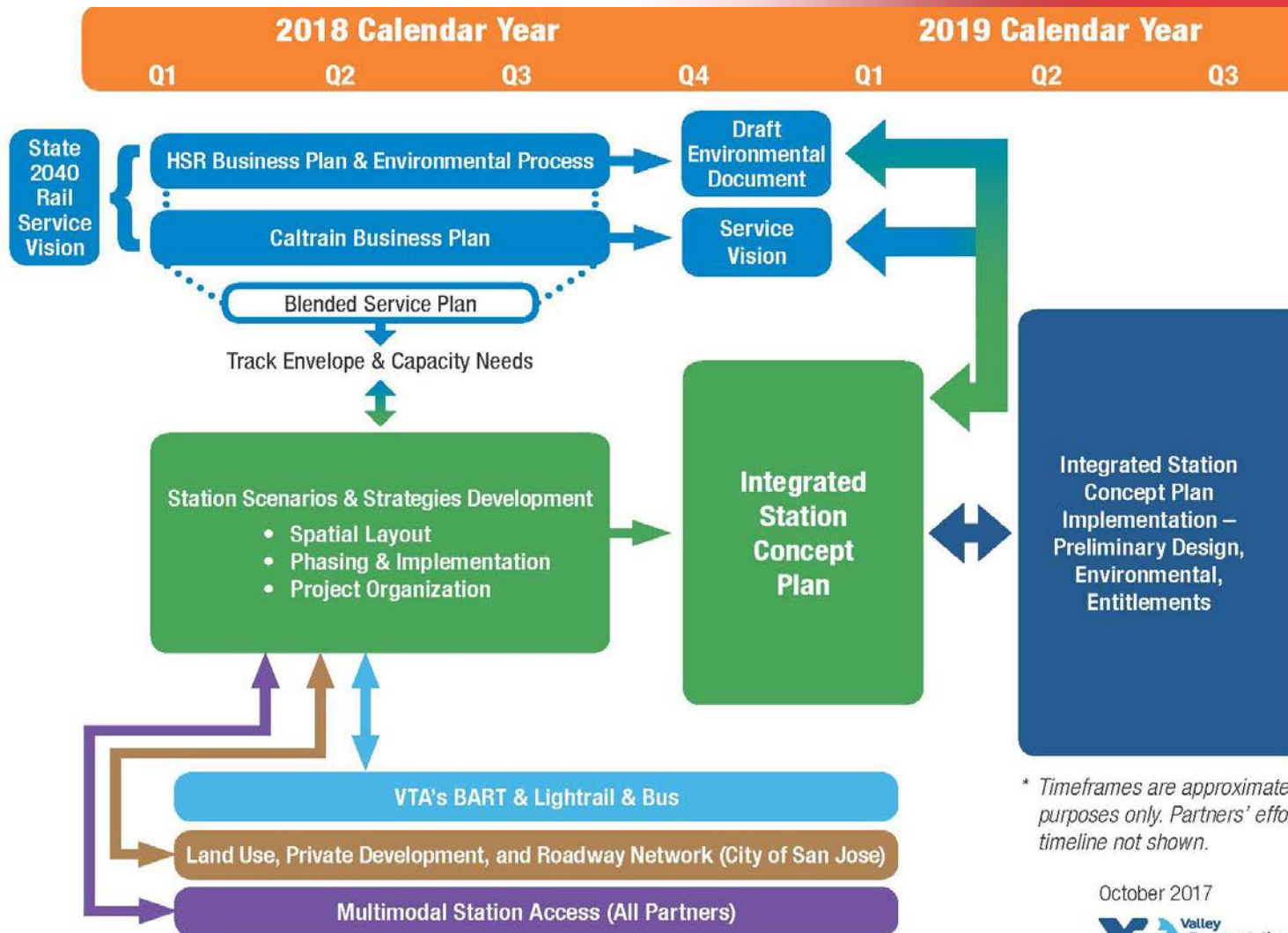
- Plan and design transit and station infrastructure for future capacity needs
- Delineate spatial needs of station to support rail and transit operations while focusing on experience of transit and station users
- Emphasize regional interconnectivity to expand and enhance service provided to customers and potential to address regional traffic congestion

relief

Integrated Station Concept Plan

- Purpose: Integrated and innovative solutions to which partners can commit
- Management: Interagency Partnership (VTA contracting agency)
- Key Components: spatial layouts with multi-modal access and implementation strategies, urban design vision
- Duration: 12 – 18 months (est.)

Plan Framework



* Timeframes are approximate for planning purposes only. Partners' efforts full timeline not shown.

Agency Cooperation Agreement

Purpose:

- Work as a cohesive group
- Fresh, bold look at the station
- Review whole station area including tracks, station, access, etc
- Partner resources & commitments (funding, staffing, grants, etc.)

Next Steps

Next Steps

- Select consultant and award contract
- Complete interagency cooperation agreement
- Coordinate community engagement efforts
- Continue private development coordination
- Explore funding opportunities

Questions?