



# 25<sup>th</sup> Avenue Grade Separation

JPB Board  
March 7, 2019 – Agenda Item# 11

# Agenda

**I. Project Need Benefits & Description**

**II. Construction**

– **Construction Status**

– **Construction Challenges**

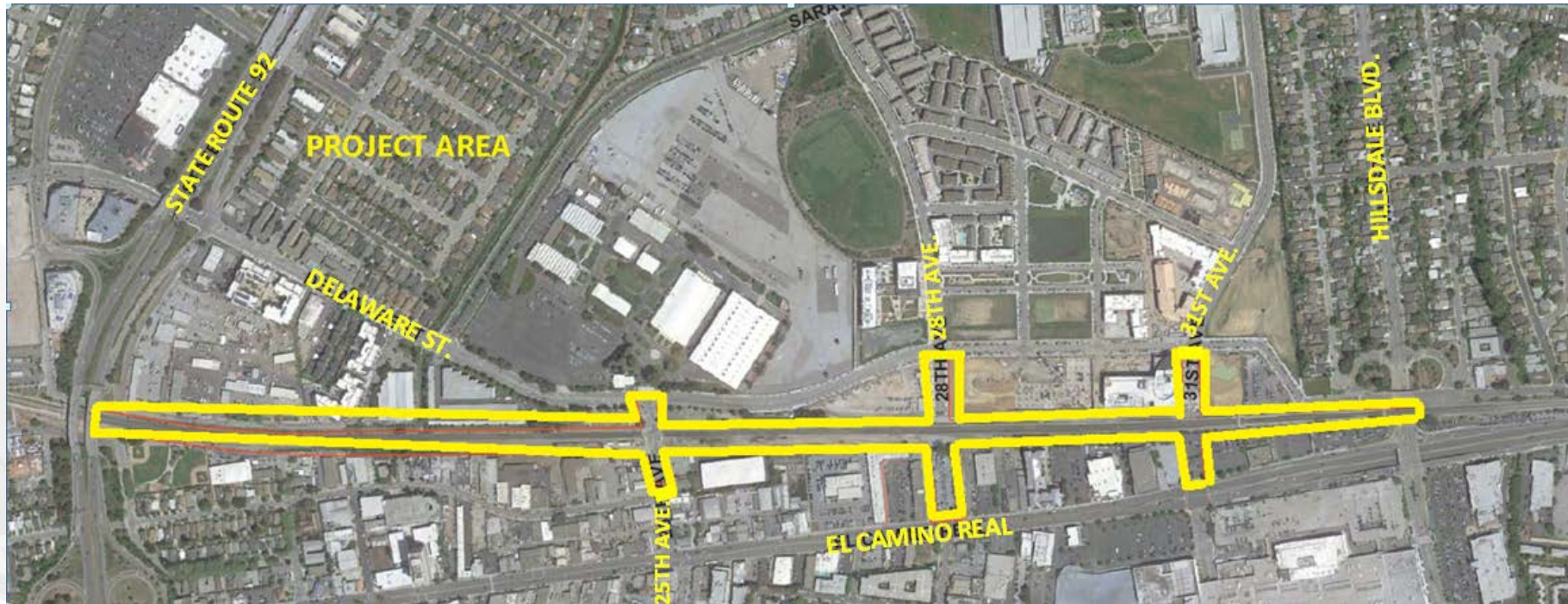
**III. Contract and Budget**



# Project Need, Benefits and Description



# Project Location



## E. 25<sup>th</sup> Ave Railroad Crossing

- 92 Caltrain trains each weekday use this crossing, in addition to freight
- No. 8 on CPUC priority list for railroad crossing safety.

# Project Benefits

- Enhanced E-W connectivity
- Improved pedestrian and motorist safety
- Improved traffic flow
- Fewer system-wide delays
- Support Caltrain electrification
- Improve Customer experience with new Station
- Enable future CAHSR
- Safe rail operations



# Factors Driving Advertisement

- Coordination with PCEP required expedited advertisement:
  - Foundations Constructed as part of 25<sup>th</sup> GS.
  - Poles and wires installed by PCEP

# Risk Factors at Advertisement

- Fiber Optic relocation was pending resolution of negotiations with UPRR
- Funding from CAHSR was pending

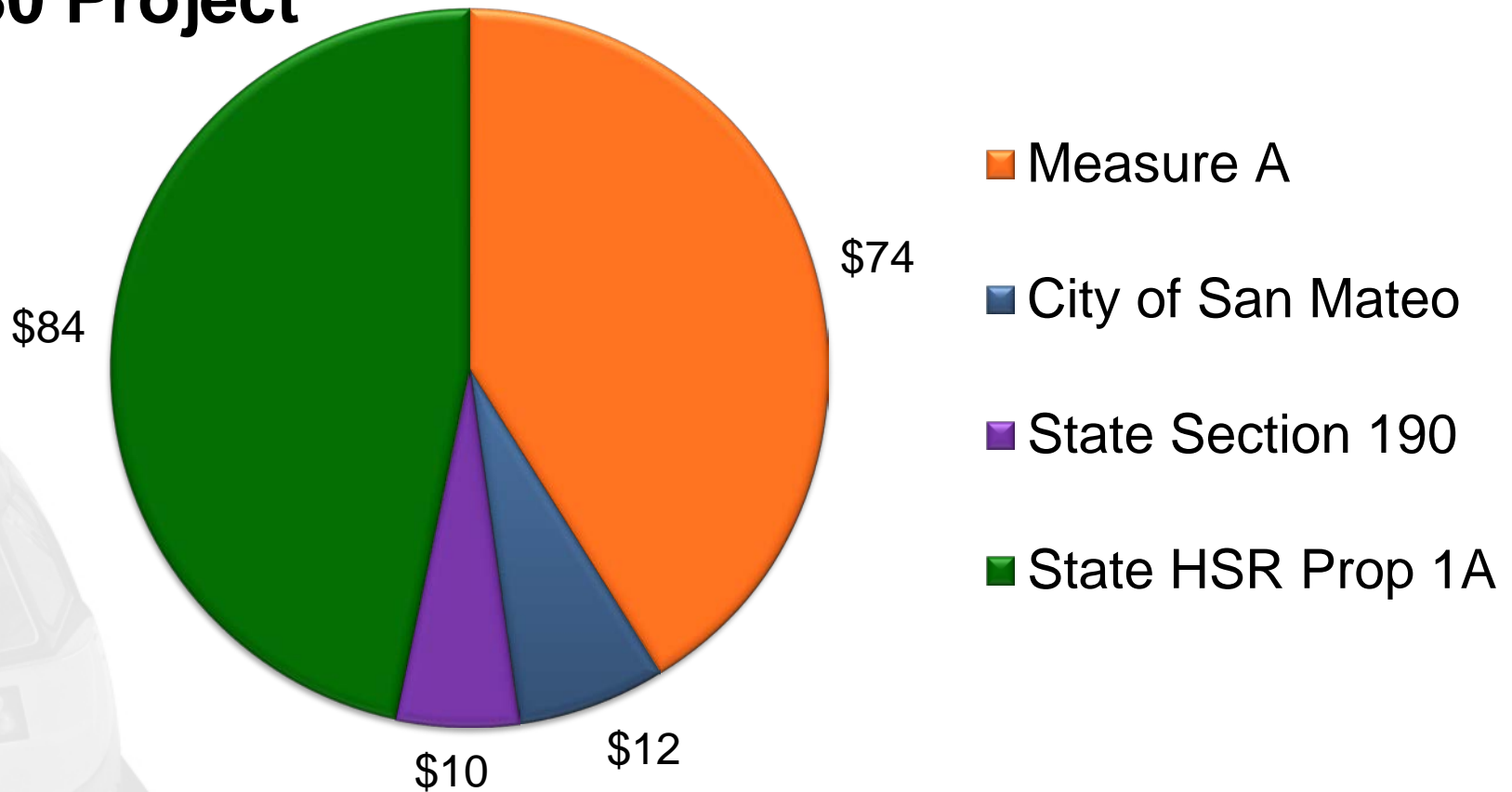


# Contract Award

- Contract Awarded to Shimmick Disney JV July 2017 for \$ 82,890,000
- Original Completion Date Jan. 2020.

# Project Funding, in Millions

\$ 180 Project



# Project Elements

Construct Grade Separation (elevated rails, lowered roads) between Hillsdale Blvd and Highway 92

- Five bridges
- Approx. 1 mile of MSE Wall
- New elevated station at Hillsdale

# Elevated Track





# East-West Connection (28th Ave)



# Relocated Hillsdale Station







# Construction - Status





# Progress

- **Bridges**
  - Beresford Creek Bridge Complete
  - Four (4) remaining Bridges substructure complete; superstructure ongoing.
- **Wall Construction**
  - North of 25<sup>th</sup> Complete this month
  - Betwn 25<sup>th</sup> and 28<sup>th</sup> Ongoing

# Bridges





# MSE Wall





# Construction - Challenges



# Project Impacts

**Utility Relocation** – Major Utility relocations by Utility Companies, including:

- Fiber Optic Duct Bank
- PGE Gas Line
- ATT Communication Duct Bank

**Station** – Relocation and opening delayed by 8 months



# Impacts Due To Fiber Optic





# Working Around Live Fiber





# PG&E Gas Line Relocation









# Contract and Budget



# Contract and Budget

- All impacts from the Fiber Optic delay in 2018 have been addressed and the project schedule has been re-baselined. **Project delayed 8 months.**
- Fiber Optic delays continue
- Return to this board with a recommendation to: increase Contract Authority; No additional budget needed
- No current impact to PCEP



# Questions



# Grade Separation (25th Ave)





# East-West Connection (31st Ave)

