



25th Avenue Grade Separation

JPB Board
April 4, 2019 – Agenda Item#10

Agenda

I. Project Need, Benefits & Description

II. Construction

– **Construction Status**

– **Construction Challenges**

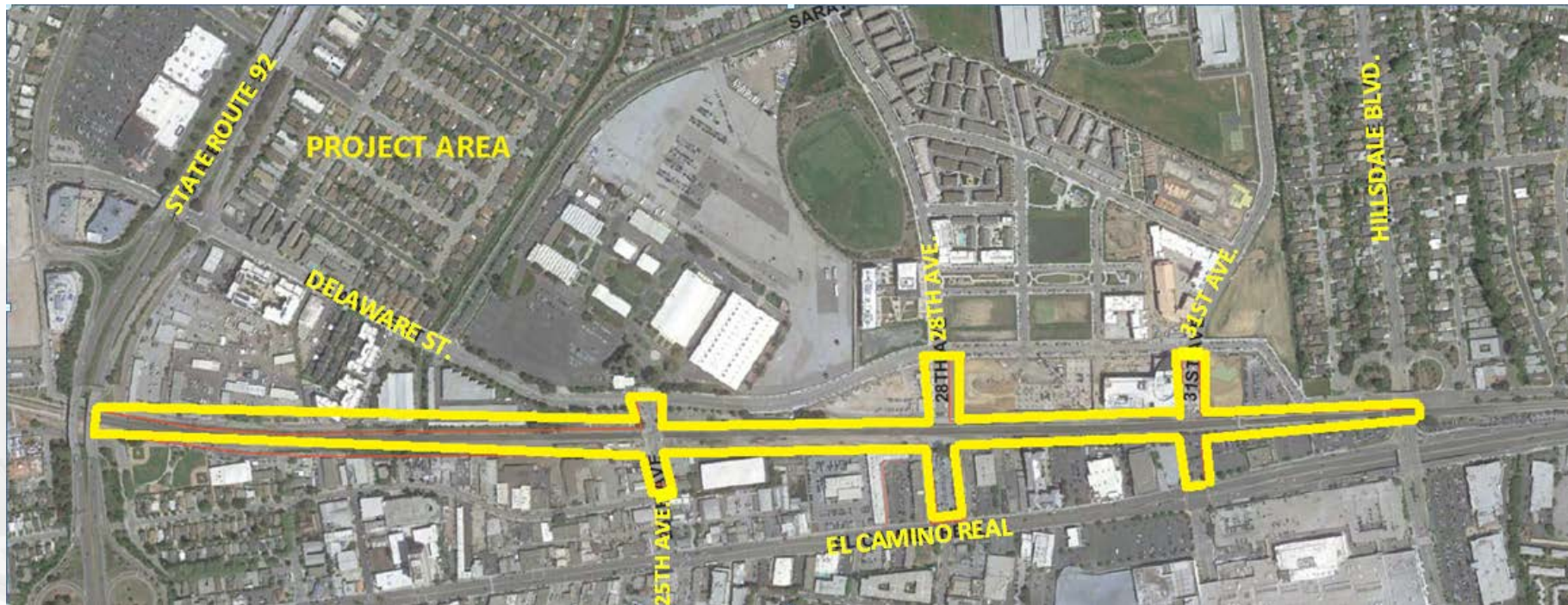
III. Contract and Budget



Project Need, Benefits and Description



Project Location



E. 25th Ave Railroad Crossing

- 92 Caltrain trains each weekday use this crossing, in addition to freight
- No. 8 on California Public Utilities Commission (CPUC) priority list for railroad crossing safety.

Project Benefits

- Enhanced East-West connectivity
- Improved pedestrian and motorist safety
- Improved traffic flow
- Fewer system-wide delays
- Support Caltrain electrification
- Improve Customer experience with new Station
- Enable future California High Speed Rail (CAHSR)
- Safe rail operations

Factors Driving Award Date

- Coordination with Peninsula Corridor Electrification Project (PCEP) required expedited Contract award:
 - Foundations Constructed as part of 25th Grade Separation (GS).
 - Poles and wires installed by PCEP

Risk Factors at Award

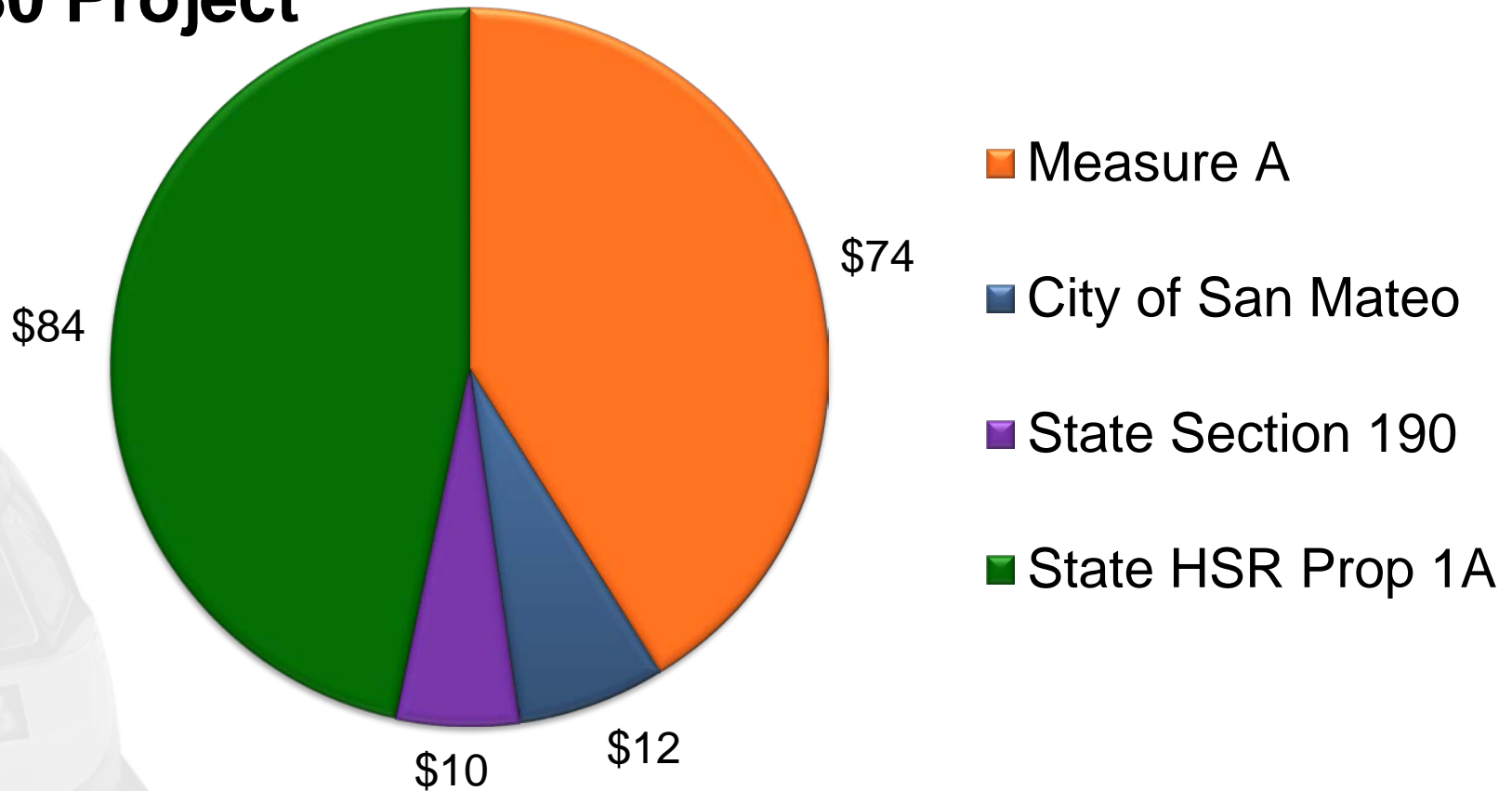
- Fiber Optic relocation was pending resolution of negotiations with Union Pacific Railroad (UPRR)
- Funding from CAHSR was pending

Contract Award

- Contract Awarded to Shimmick Disney JV July 2017 for \$ 82,890,000
- Original Completion Date Jan. 2020.

Project Funding, in Millions

\$ 180 Project



Project Elements

Construct Grade Separation (elevated rails, lowered roads) between Hillsdale Blvd and Highway 92

- Five bridges
- Approx. 1 mile of Mechanically Stabilized Earth (MSE) Wall
- New elevated station at Hillsdale

Elevated Track



East-West Connection (28th Ave)



Relocated Hillsdale Station





Construction - Status



Progress

- **Bridges**
 - Beresford Creek Bridge Complete
 - Four (4) remaining Bridges substructure complete; superstructure ongoing.
- **Wall Construction**
 - North of 25th Complete this month
 - Betwn 25th and 28th Ongoing

Bridges



MSE Wall





Construction - Challenges



Project Impacts

Utility Relocation – Major Utility relocations by Utility Companies, including:

- Fiber Optic Duct Bank
- PGE Gas Line
- ATT Communication Duct Bank

Station – Relocation and opening delayed by 10 months, with an anticipated opening of June 2020

Impacts Due To Fiber Optic



Working Around Live Fiber



PG&E Gas Line Relocation



AT&T



Weather Impacts

2018-2019 “Atmospheric Rivers”

- Caused Project Delays due to excess rain days
- Created significant stormwater flows requiring substantial dewatering

Weather Impacts





Contract and Budget



Contract and Budget

- All impacts from the Fiber Optic delay in 2018 have been addressed and the project schedule has been re-baselined.
- Fiber Optic delays continued through March 2019. **Total Project Delayed up to 12 months. Current Anticipated Completion Date of January 2021.**
- Return to this board with a recommendation to: increase Contract Authority; No additional budget needed
- No current impact to PCEP



Questions



Grade Separation (25th Ave)



East-West Connection (31st Ave)

