



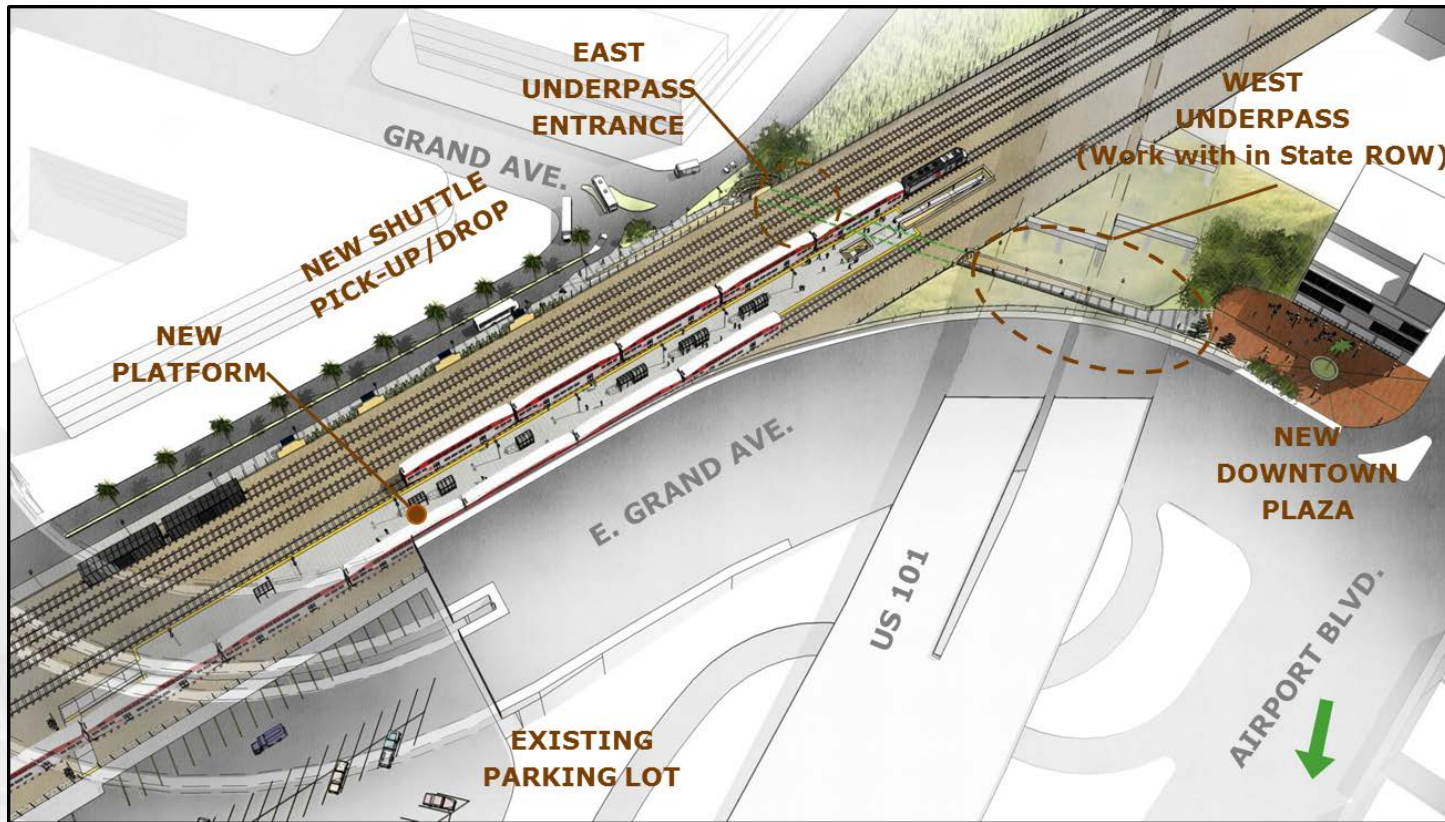
# South San Francisco Station Improvement Project

December 5, 2019  
JPB Board Meeting

# Presentation Outline

- Project Overview
- Project Schedule and Budget
- Funding Plan
- Cost Variances
- Graphics
- Ongoing Construction & Next Steps

# Project Overview



- New center platform
- Pedestrian underpass
- Shuttle pick-up/drop-off
- Track and signal work
- Removal of holdout rule & ADA access

# Project Schedule

Activity	Date
Bid & Award	April 2017 – August 2017
Begin Construction	November 2017 <sup>1</sup>
Partial Suspension	April 2018 – September 2019 <sup>2</sup>
Complete Construction	November 2020 <sup>3</sup>

1) Construction started November 2017

2) Construction suspended April 2018, resumed construction September 2019

3) Construction projected to be completed November 2020

# Project Budget

- Original cost estimate during bid = \$55.0M
- Significant delays for required agreements, permits and utility relocations (delay approx. 1 ½ years)
- Current cost estimate November 2020 = \$71.6M



# Funding Plan

Proposed  
Update

Source	2015	2018	FY2020
Measure A Caltrain Program	\$10.272 M	\$10.272 M	\$21.572 M
City of South San Francisco	\$5.900 M	\$8.700 M	\$9.900 M
Federal Section 5337 Program	\$38.827 M	\$38.827 M	\$38.827 M
Rail Ops (JPB)	-	\$1.300 M	\$1.300 M
<b>Total</b>	<b>\$55.000 M</b>	<b>\$59.100 M</b>	<b>\$71.600 M</b>

## Increase of \$16.6 million (2015 – 2019)

### Delays/cost escalation = \$9.8M

- Agreement/permit delays & utility relocation (\$7.1M)
- Risk register Items (\$2.7 M)

### Added scope = \$6.8M

- UPRR Scope (\$4.0M)
- Plaza & undercrossing enhancements (\$2.8M)

# Variations from 2015 Cost Estimate

- Delays/Cost Escalation
  - Delayed airspace agreement and encroachment permit under 101 freeway
  - Sequential vs concurrent utility relocation
  - Inclement weather delays impacting gas line relocation
  - PG&E Bankruptcy filing (Jan 2019)
  - Contaminated soil disposal
  - Material and labor escalation costs due to construction delay
- Added Scope
  - UPRR freight storage track relocation
  - City requested plaza and undercrossing enhancements

# Existing Project Conditions



*Existing Platform – South San Francisco Station Boarding*



# West Plaza – Station Access



*Renderings of West Plaza - Station Access*

# Pedestrian Underpass



*Renderings of Underpass - Station Access*

# Center Platform



*Renderings of Center Platform – Looking North*

# Station East Access – Poletti Way

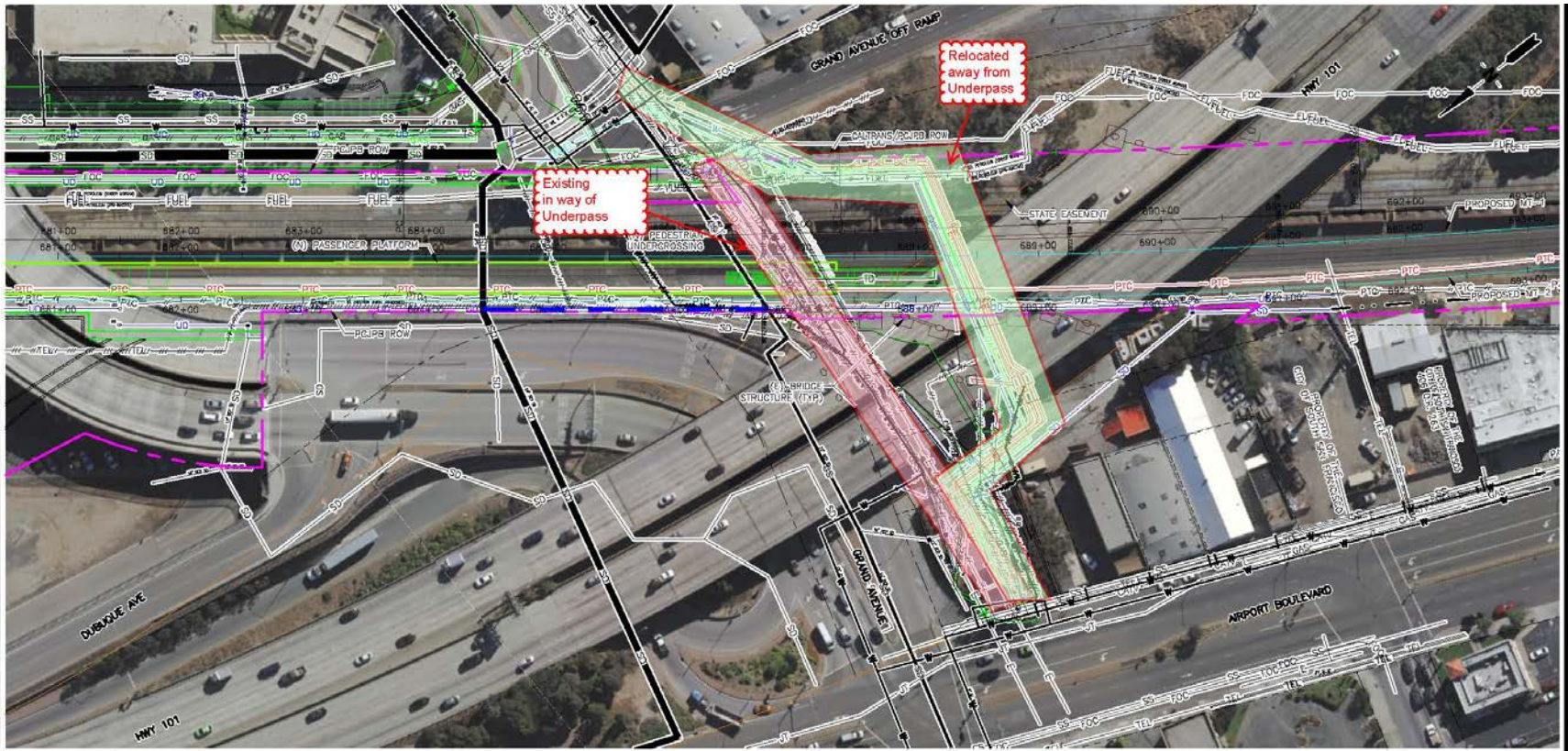


*Renderings of Shuttle Drop off Area – Poletti Drive*

*Renderings of East Station Access – Poletti Drive*



# Utility Relocation Work



**Red** = Existing Utility; Same location as Underpass

**Green** = Relocated Utility; Away from Underpass

# Utility Relocation Work



Shoring and Main installation - West Plaza



18 inch water main East side UPRR track



Water main tie in East Grand Ave.

*CalWater Relocation – completed April 2019*

# Utility Relocation Work



Routing from Splice box to termination point



Splice boxes on Grand Avenue

*PG&E Electric Relocation – completed Sept. 2019*

# Field Work Status

Completed Work	<ul style="list-style-type: none"><li>• Utility relocations</li><li>• Shoofly construction (MT1 and MT2)</li><li>• PTC signal cable cutover</li><li>• Geotechnical investigations</li><li>• Signal cable inspections</li></ul>
Work in Progress	<ul style="list-style-type: none"><li>• OCS foundations</li><li>• Street improvements (Poletti Way)</li></ul>
Future Work	<ul style="list-style-type: none"><li>• Remobilize equipment and crews</li><li>• Ramp &amp; pedestrian underpass</li><li>• Center platform</li><li>• Shuttle drop off area</li><li>• Signal improvement</li><li>• Additional plaza improvements</li></ul>



## Next Steps

- Increase FY20 Capital Budget (\$11.3M TA, \$1.2M City)
- Continue construction: *OCS foundation, street improvement work at Poletti Way*
- Remobilize equipment and crews for critical path work
- Resume construction of SSF station improvements and pedestrian underpass

Questions?