

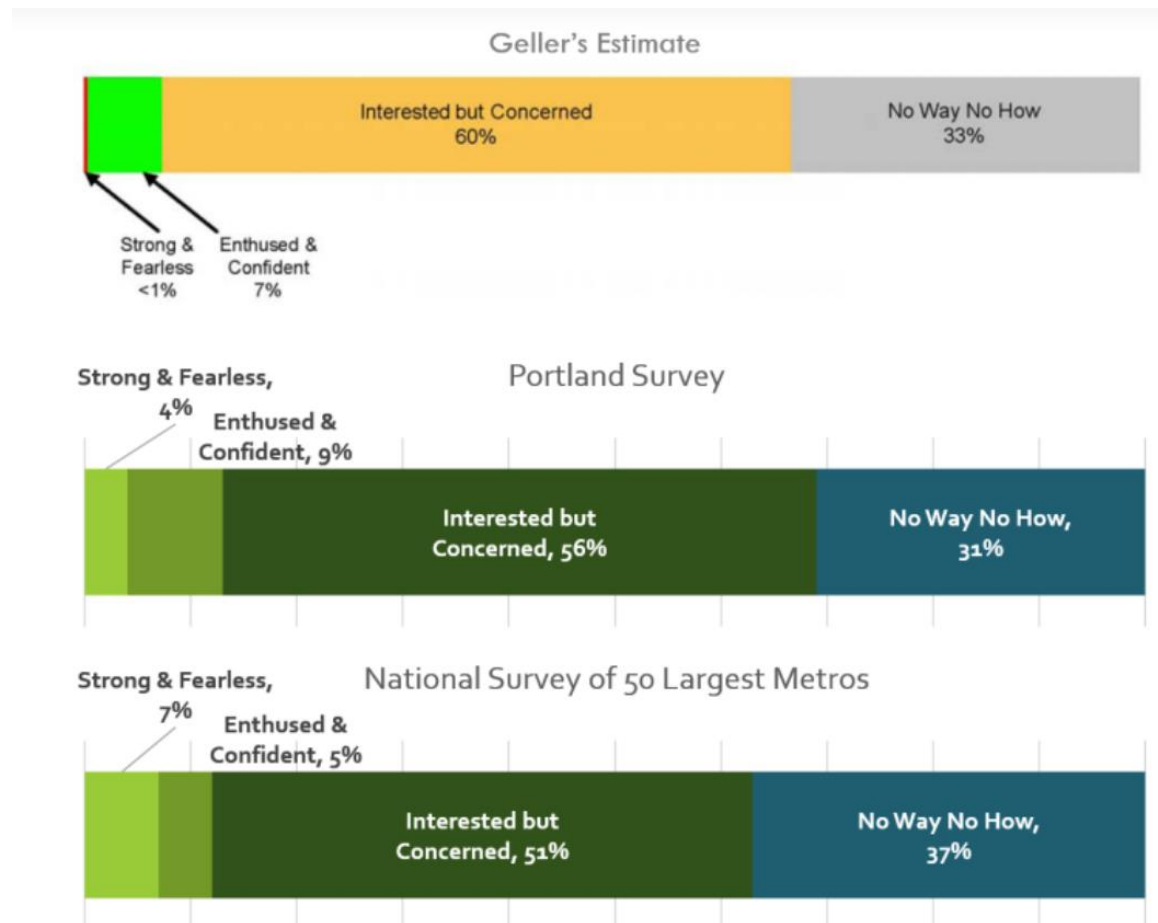


4th and King Station Access Improvements

Bicycle Advisory Committee

January 17, 2020

Four Types of Cyclists



Source: Alta Planning

Levels of Traffic Stress



LTS 1

The level comfortable for all user groups, including vulnerable users (children, youth, disabled persons, and seniors)



LTS 2

The level comfortable for most adults on bicycles, including beginning riders and seniors; experienced children and youth



LTS 3

The level comfortable for most intermediate and experienced adult bicycle riders, e.g., the "enthusiastic and confident"

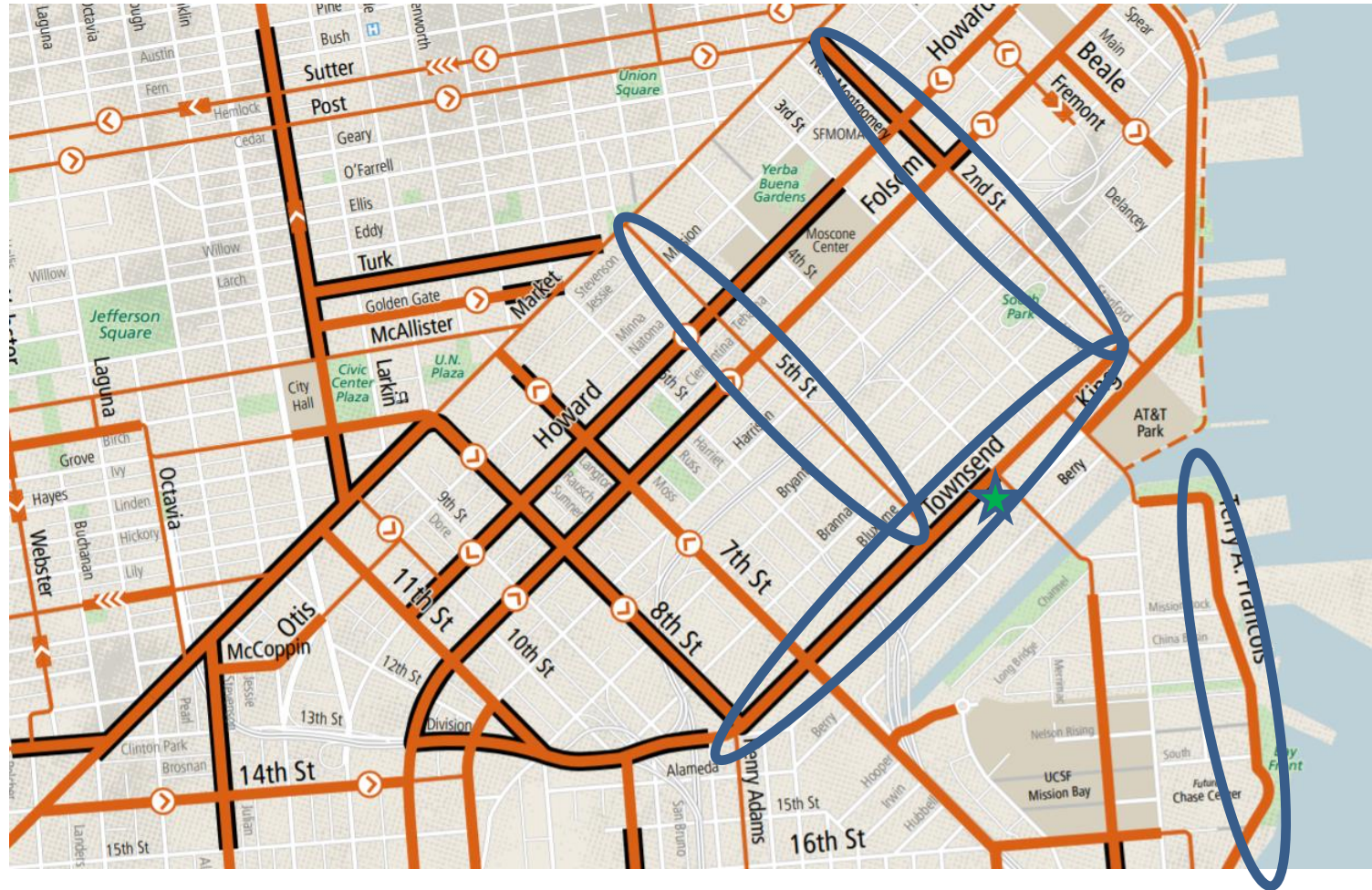


LTS 4

The level tolerated only by "strong and fearless" people on bicycles, typically shared travel lanes on high volume streets

Source: SFMTA

San Francisco Bike Map

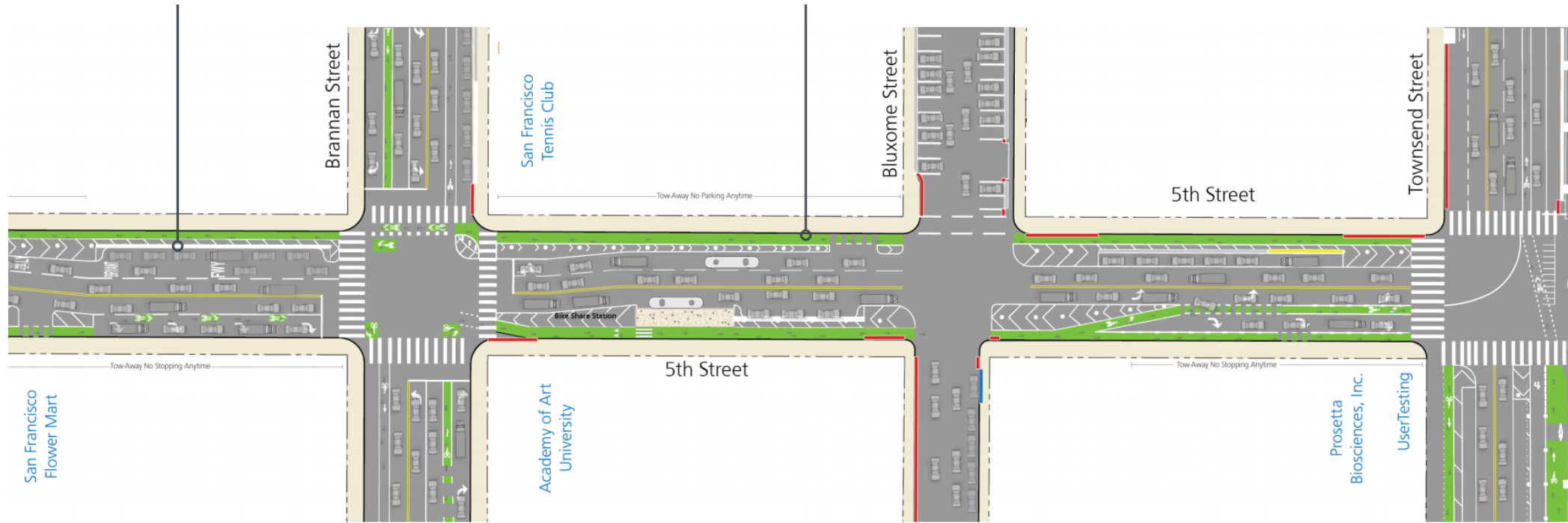


5th Street Design





- Parking protection
- Buffers
- Clear sight lines at turn locations
- No weaving with buses
- Design considerations at heavy turn locations



5th Street Project

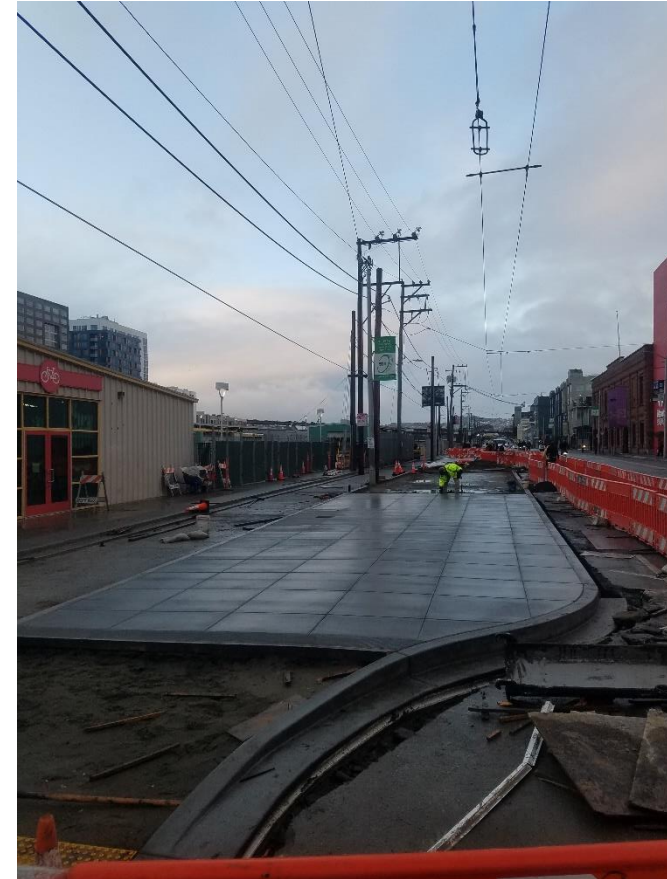


Color Curb Legend

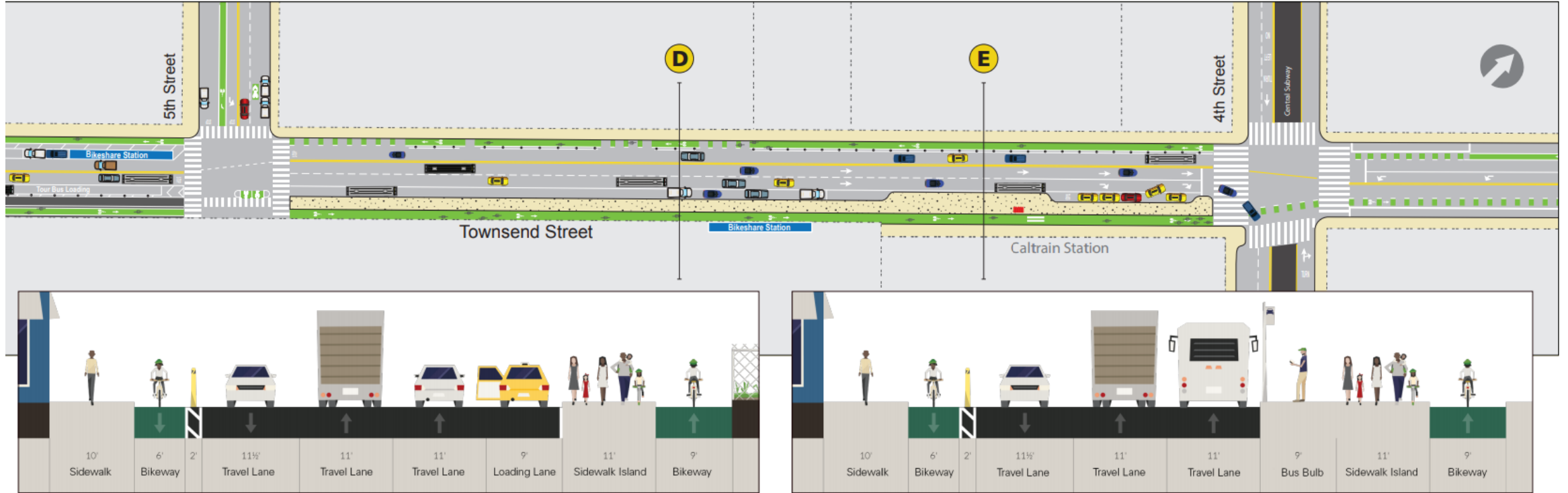
-  Yellow Curb (commercial loading zone)
-  White Curb (passenger loading zone)
-  Blue Curb (placed at curb ramps)
-  Red Curb (areas to keep clear)

Townsend Street Project

- Design for high passenger drop off numbers
- Designated space for buses, taxis, TNCs
- Physical separation from motor vehicles
- New sidewalk constructed



Townsend Street Project



2nd Street Project

- Physical separation
- Bus islands
- Bike signals
- Pedestrian improvements



Terry Francois Project

- Two way facility
- Fewer intersections along bay (similar to situation along tracks)



Source: Joe Rodriguez

Issues at 4th and King

- Other than bike share docks, not much guidance for dockless users
- Reliability of devices is lower due to rebalancing issues
- General issues with devices being placed all over the station

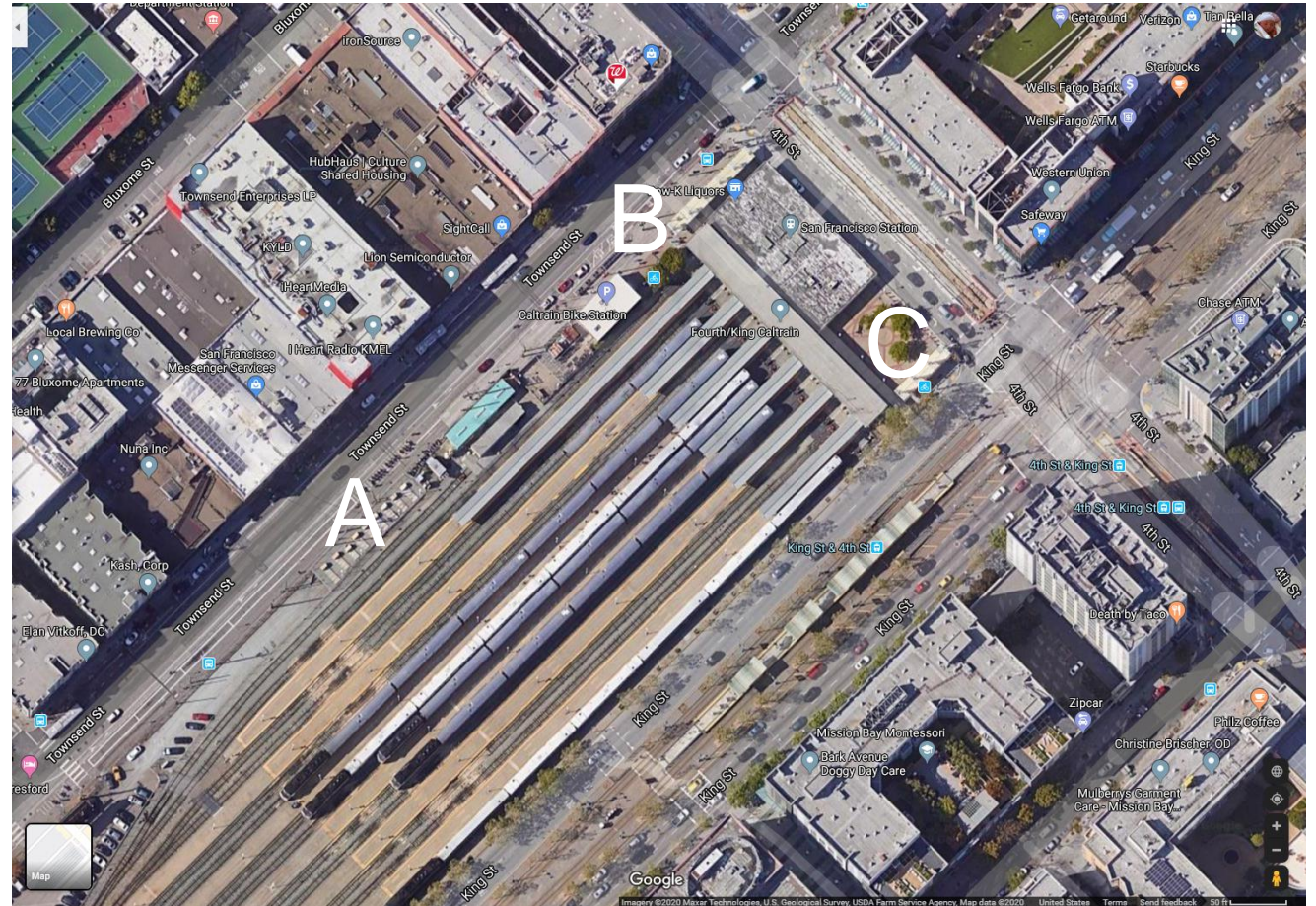


Opportunities at 4th and King

- Changes to pedestrian flow from Townsend Project may open up areas for bike racks and other options
- Companies are interested in valet possibilities
- Bike parking facility interest in partnering with share micromobility companies

Potential Wayside Improvement Sites

- Area A – Old locker area
- Area B – Plaza near bike parking facility
- Area C – Plaza at 4th and King



Area 'A' – Old Bike Locker Area

- Security issues caused removal of old lockers
- May be needed for construction station
- Larger footprint for long term



Area 'B' – Townsend Plaza

- Bike share docks moved
- New pedestrian flow along Townsend
- Interest in creative partnerships



Area 'C' – King Street Plaza

- Area used for staging related to large events
- Bike share docks moved here during Townsend construction
- Working with SF on bike racks along King



Other Bike Plans

- More than 10 other jurisdictions along the Caltrain corridor are working on bike plans
- NACTO (National Association of City Transportation Officials) is a great resource for design ideas
- Silicon Valley Bike Coalition has a comprehensive list
- <https://bikesiliconvalley.org/advocacy/bicycle-pedestrian-plans/>

Questions/Discussion

