



Guadalupe River Bridge Replacement Project

Public Information Meeting

December 10th, 2020

Meeting Logistics

- All participants are muted.
- Opportunity for questions and comments will be provided at the end of the presentation.
- Recording of the presentation and slides will be available after the meeting on the project website:
www.caltrain.com/guadalupebridge
- Para miembros del público de habla hispana, responderemos preguntas en español al final de la reunión.

Project Team Introductions

- Gia Daniller-Katz, Public Outreach Consultant
- Ryan McCauley, Caltrain Community Affairs
- Hilda Lafebre, Caltrain Environmental Manager
- Gary Fleming, Caltrain Project Manager
- Leo Tidd, WSP- Environmental Consultant
- Adrian Gunderson, HDR- Design Consultant

Agenda

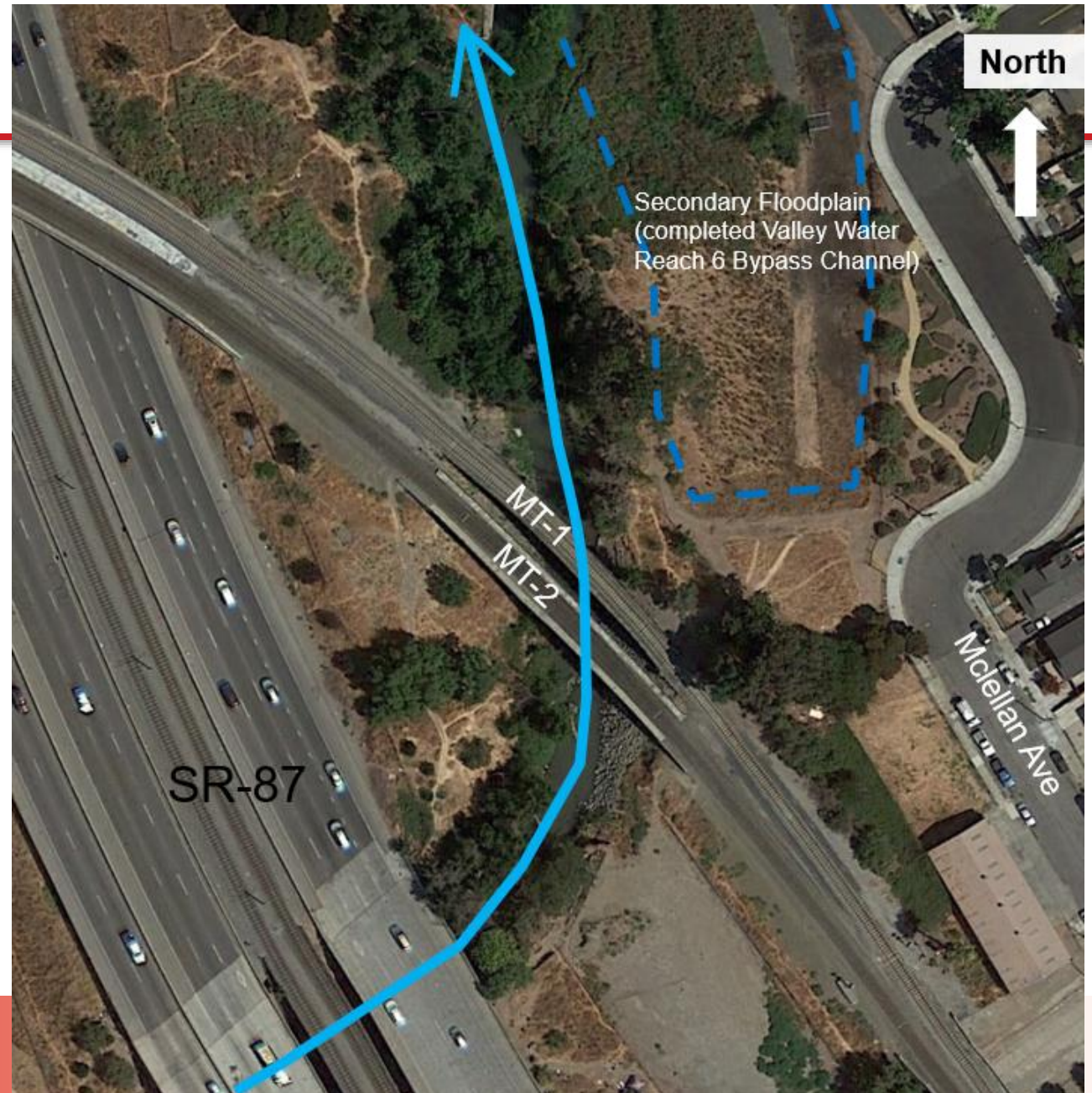
1. Project Team Introductions
2. Project Location
3. Purpose and Need for the Project
4. Project Description
5. Project Cost and Funding
6. Environmental Review Process
7. Environmental Impacts and Mitigation
8. Public Review Period
9. Questions and Comments

Project Location



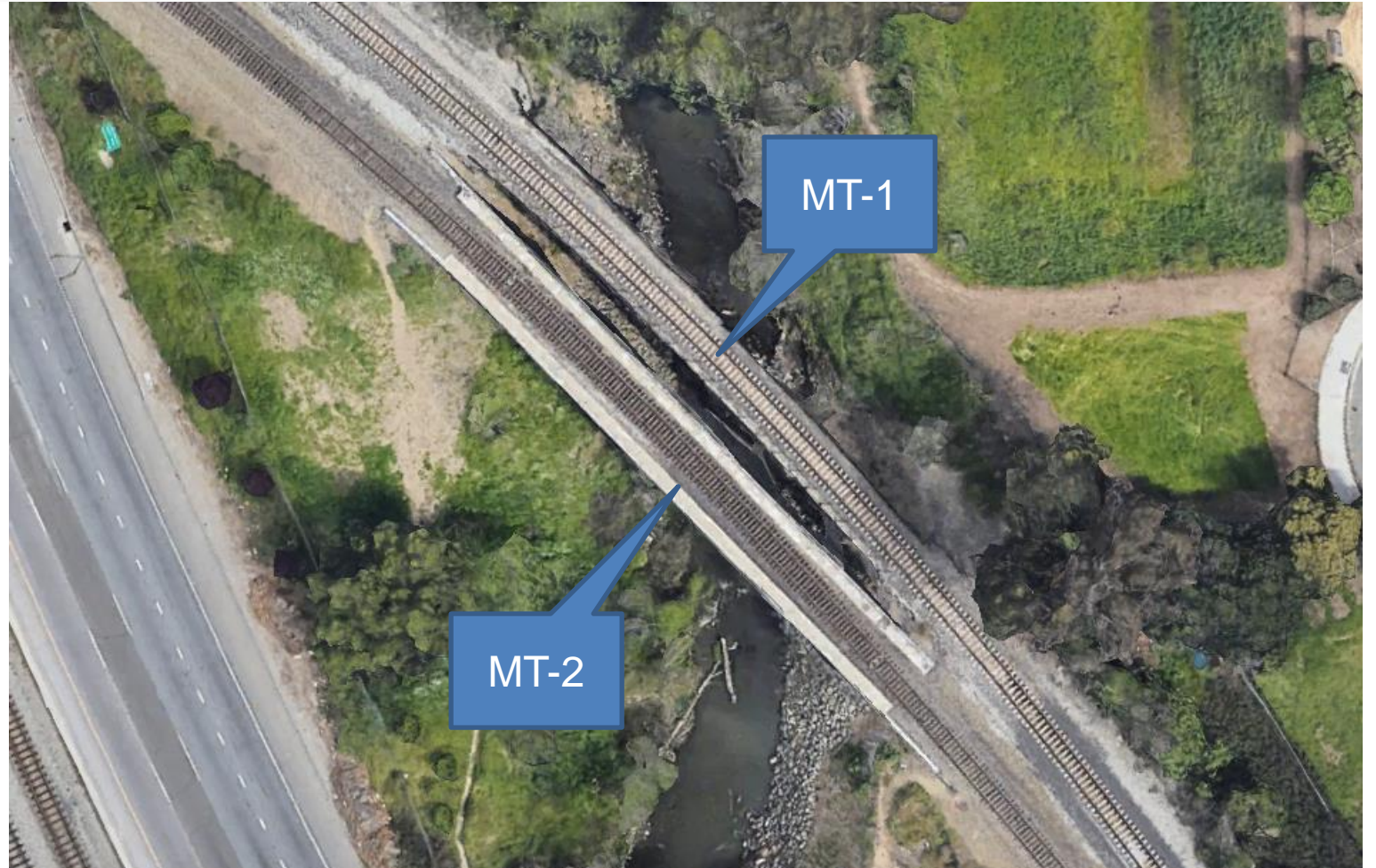
Project Area

- Guadalupe River Rail Bridges are located in an area bounded by Virginia St. to the north, McClellan Ave. to the east, Willow St. to the south, and SR-87 to the west.



Existing Condition

- Two bridges over Guadalupe River in San Jose:
 - 1935 (MT-1) wooden trestle, steel, and concrete bridge
 - 1990 (MT-2) concrete bridge
- Each bridge carries one track



Existing MT-1 Bridge



Existing MT-2 Bridge



Purpose and Need for the Project

- *The purpose of the project is to address the structural deficiencies of the MT-1 bridge and the geomorphic instability of the Guadalupe River channel in the vicinity of the MT-1 and MT-2 bridges to provide for long-term public safety and service reliability.*

Need for MT-1 Bridge Replacement

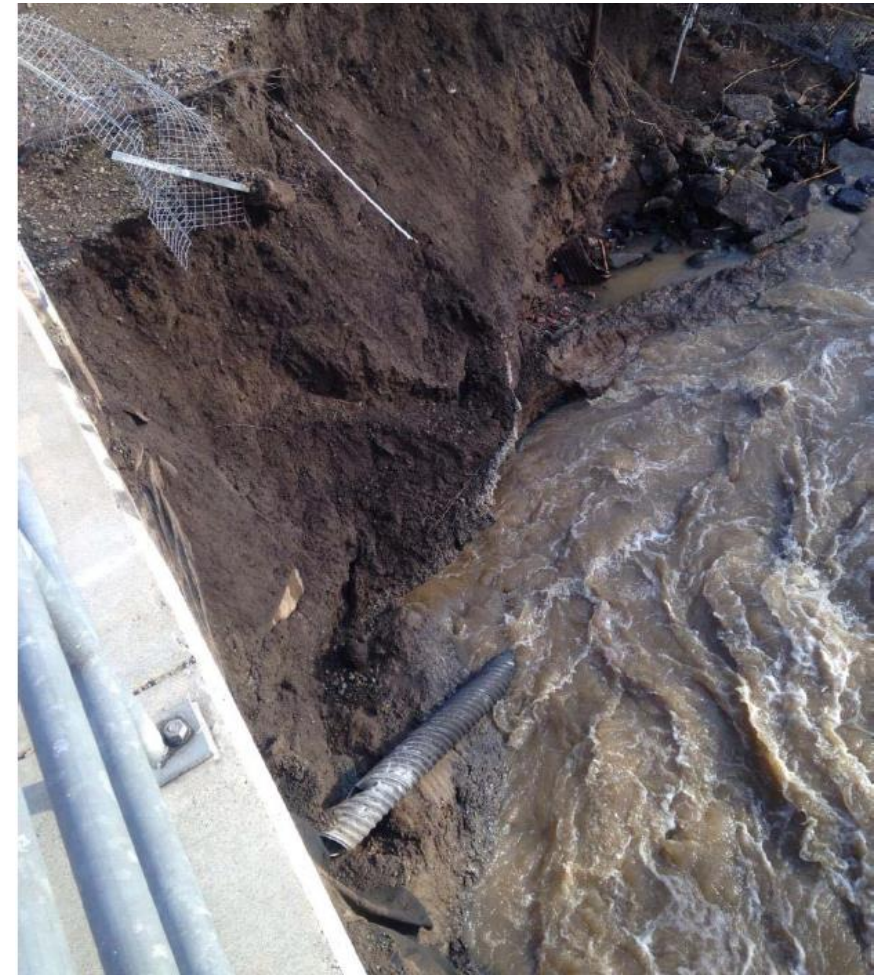
- Deteriorating structural condition of 1935 trestle exacerbated by bank failures and fire
- Structure does not meet seismic criteria or railroad standards



Need for MT-1 and MT-2 Bridge Extensions

- Bridges are located in an area of high erosion and bank failure during storm events (multiple emergency repairs required).
- The high flow velocity and associated bank failures during storm events threaten the integrity of the bridges. Widening the channel and extending the bridges will reduce flow velocity and erosion.

Reoccurring Bank Failures

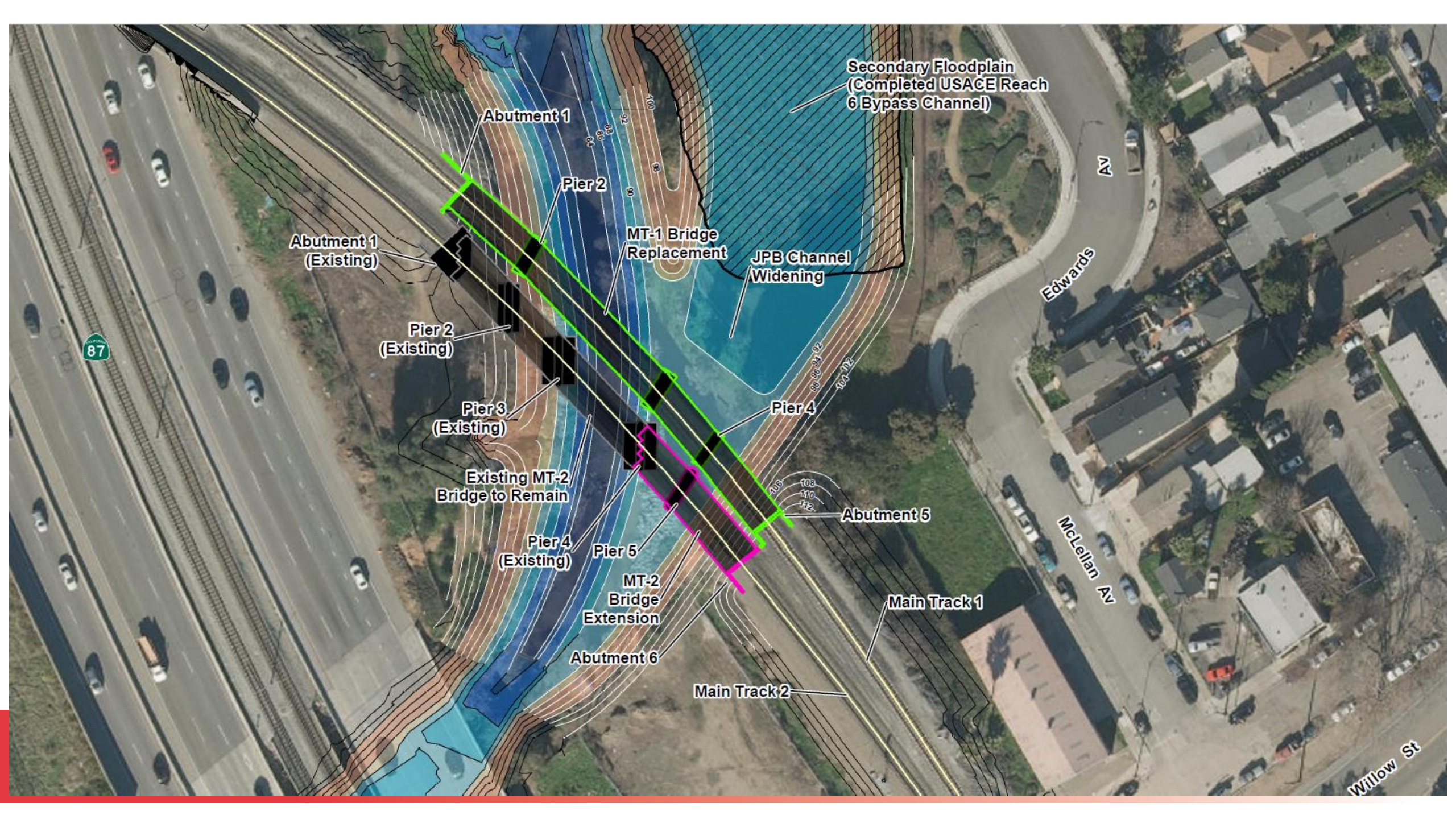


Temporary Bank Stabilization Measures



Project Description

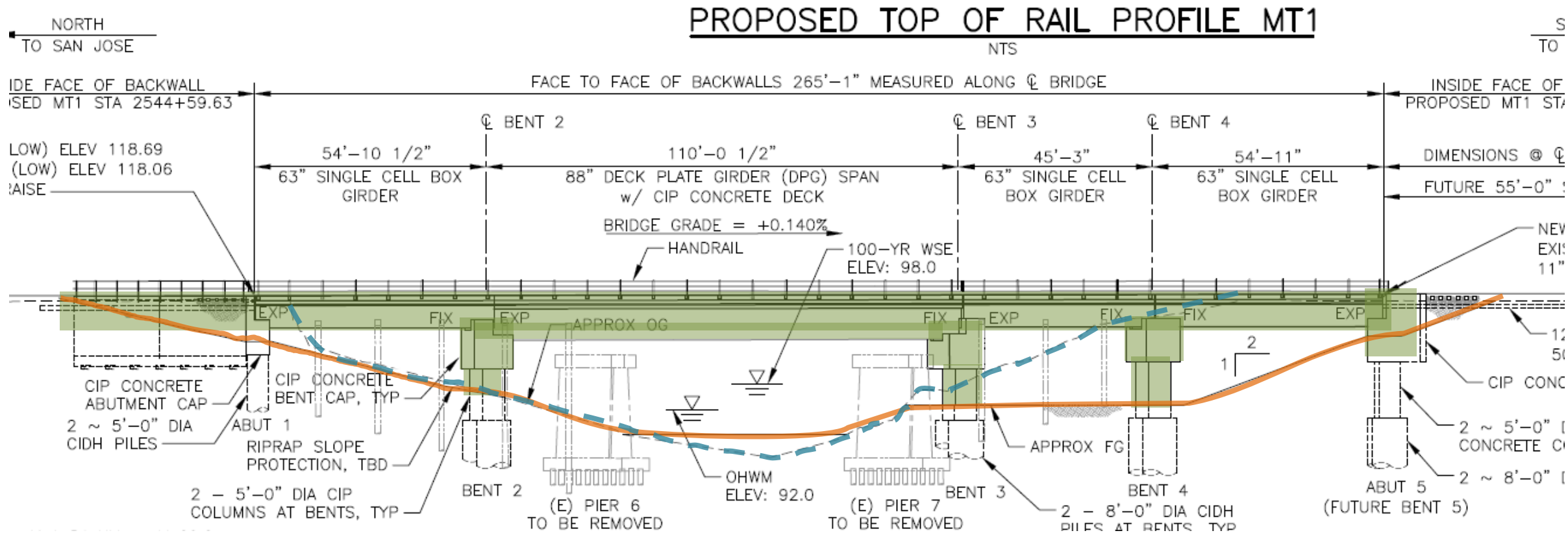
- Independent transportation/safety project
- Replace MT-1 with new longer bridge (265 feet)
- Extend MT-2 by 90 feet at southern end
- Channel widening to reduce scour and risk to bridge structures
- Design is compatible with potential additional channel widening in the future by Valley Water (Upper Guadalupe River Flood Control Project, Reach 7)



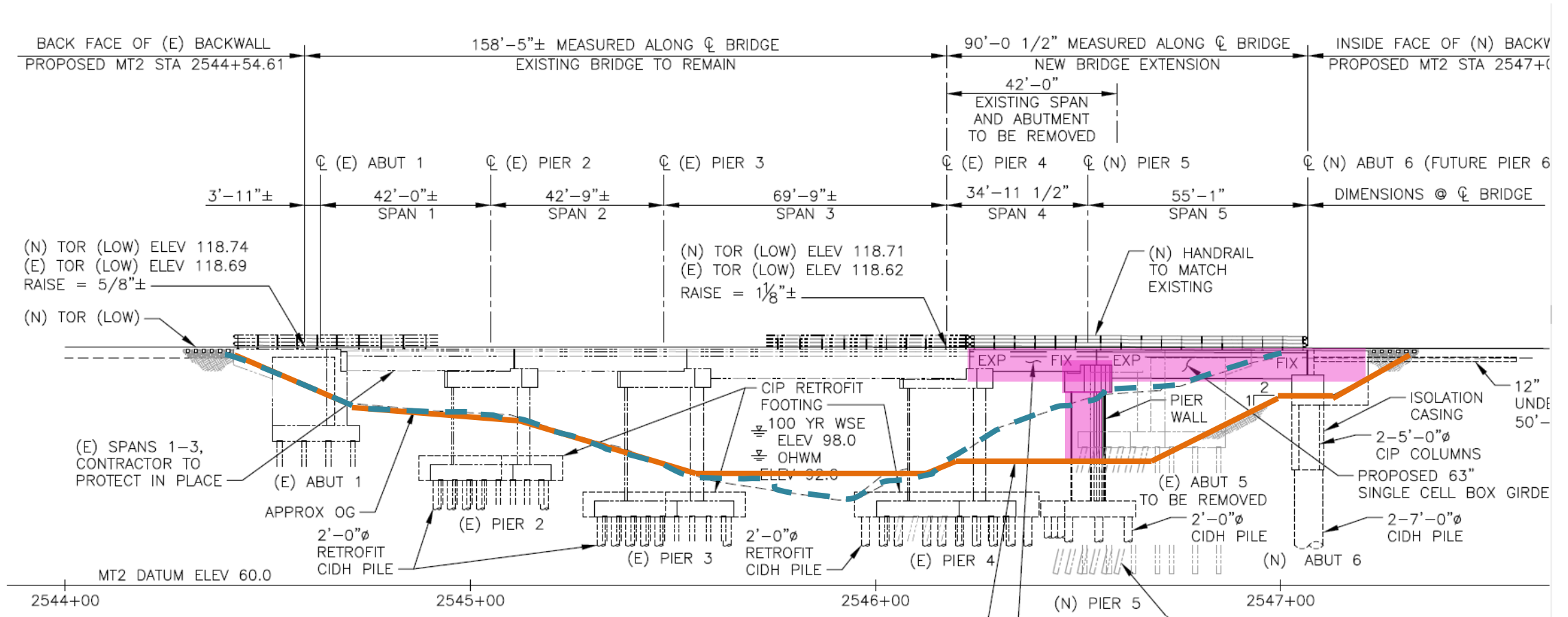
Existing Reach 6 Bypass Channel



MT-1 Bridge Replacement



MT-2 Bridge Extension



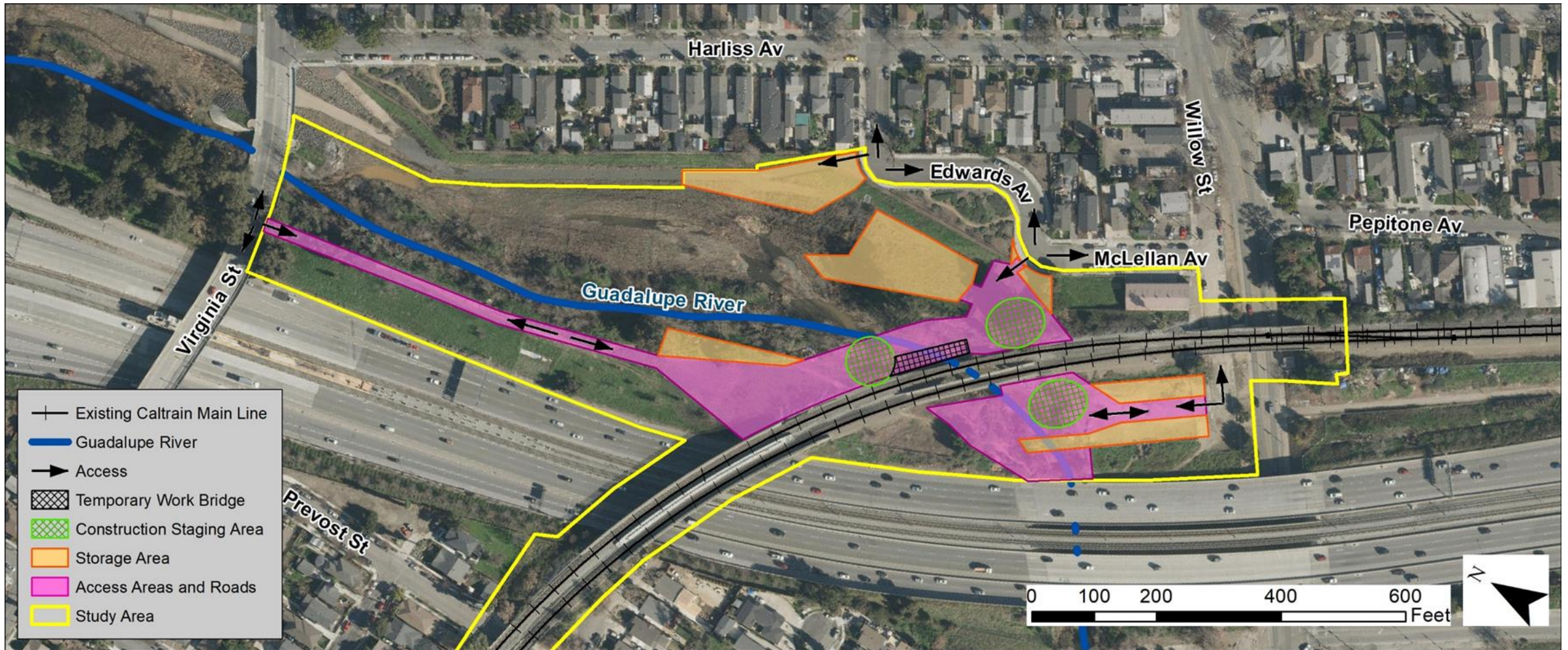
Construction Approach

- Approximate construction duration of two years and is anticipated to start in 2022
- Dewatering (diversion of river in pipes under work area) is required
- In-channel work is limited to June 15- October 15 work window to protect special-status fish species

Construction Sequence

- Year 1- Demolish MT-1 Bridge, Construct replacement MT-1 bridge (all rail service on MT-2), channel grading.
- Year 2- Extend southern end of MT-2, complete channel grading and riparian habitat restoration measures (all rail service on the new MT-1 bridge)

Construction Access and Storage Areas



Project Schedule

Milestone	Date
Environmental Review Process (CEQA and NEPA)	Summer 2021
Final Design and Permitting	Winter 2021
Project Bid Award	Spring 2022
Construction	Spring 2022- Summer 2024

Project Cost and Funding

- Estimated construction cost is \$33 million
- Funding sources include:
 - Federal (FTA)- 80%
 - State and Local- 20%

Environmental Review Process

- National Environmental Policy Act (NEPA)- Federal Transit Administration (FTA) is lead agency
- California Environmental Quality Act (CEQA)- Peninsula Corridor Joint Powers Board/ Caltrain is the lead agency
- CEQA Draft Initial Study/Mitigated Negative Declaration is available for public review until December 21, 2020
- Caltrain will respond to comments received and release final CEQA document in early 2021

Environmental Impacts and Mitigation

Key Issue	Mitigation Measures
Temporary Construction Noise and Air Emissions/Dust (nearest residence approx. 225 feet from MT-1)	Idling restrictions, use of newer equipment, construction noise mitigation plan (including temporary construction noise barriers or shrouds), construction air quality best management practices. Community outreach program to notify residences of unavoidable nightwork.
Special-Status fish species (federal Endangered Species Act threatened steelhead)	Dewatering limited to time period when steelhead are unlikely to be present. Fish relocation and biological monitoring. Construction stormwater runoff prevention and control measures.
Wetlands/Riparian Habitat	Habitat Mitigation and Monitoring Plan to identify details of restoration of native riparian vegetation. Replacement tree mitigation (3:1 for native ordinance trees, 1:1 for nonnative) Widened channel reduces erosion risks, which will benefit aquatic habitat in the long-term.

For more details, refer to the Draft IS/MND available at: www.caltrain.com/guadalupebridge

Public Outreach

- Efforts to notify the public of this meeting and the availability of the Draft IS/MND included the following:
 - Postcard mailing to addresses within ¼ mile of project
 - Newspaper notices (Mercury News and El Observador)
 - Notification of community groups
 - Project website, email address and contact phone number

Public Review Period

- Draft Initial Study and Mitigated Negative Declaration available for review
 - Download from: www.caltrain.com/guadalupebridge
- Comment Period: November 20, 2020- December 21, 2020
- Comment by email to: guadalupe@caltrain.com
- Mail comments to: Caltrain/Attn: Guadalupe River Bridge Comments, 1250 San Carlos Ave. San Carlos, CA 94070-1306

Questions and Comments

- To make a comment or ask a question:
 - Use the raise hand function in Zoom
 - Type using Q&A option
 - On phone press *9

