

Guadalupe River Bridge Replacement Project

Community Meeting
January 31, 2023



Welcome!

Meeting Details

- Meeting is being recorded
- Group Agreements
 - Interact respectfully
 - Listen for understanding
- Questions from the audience
 - Enter through the chat

Agenda

- Welcome & Introductions
- Project Overview
- What to Expect During Construction
- Schedule & Budget
- Communication
- Questions

Project Team

MIKE BOOMSMA

Project Manager

KIRK BRANDT

Resident Engineer

HILDA LAFEBRE

Deputy Director, Program Management &
Environmental Compliance

JAKE JONES

Bridge Inspector

ALFRED DARMOUSSEH

Manager, Construction Services

LORI LOW

Acting Manager, Government &
Community Affairs



Caltrain

Caltrain provides passenger service from San Francisco to Gilroy.

Our vision is to provide a safe, reliable, sustainable modern rail system that meets the growing mobility needs of the San Francisco Bay Area region.



Guadalupe River Bridges

LOCATION



Guadalupe River Bridges

LOCATION
DETAILED VIEW



Current Operating Environment

Bridges also used by Union Pacific Railroad for freight service; and Amtrak and ACE for passenger service.



Project Need



- Caltrain operates on two tracks in the project area
- The 1935 Wooden Bridge (northbound track known as MT1) is seismically vulnerable, has been damaged by multiple fires, and structurally requires immediate replacement
- The Guadalupe River channel suffers erosion problems, resulting in multiple emergency repairs to address bank failures adjacent to the bridges

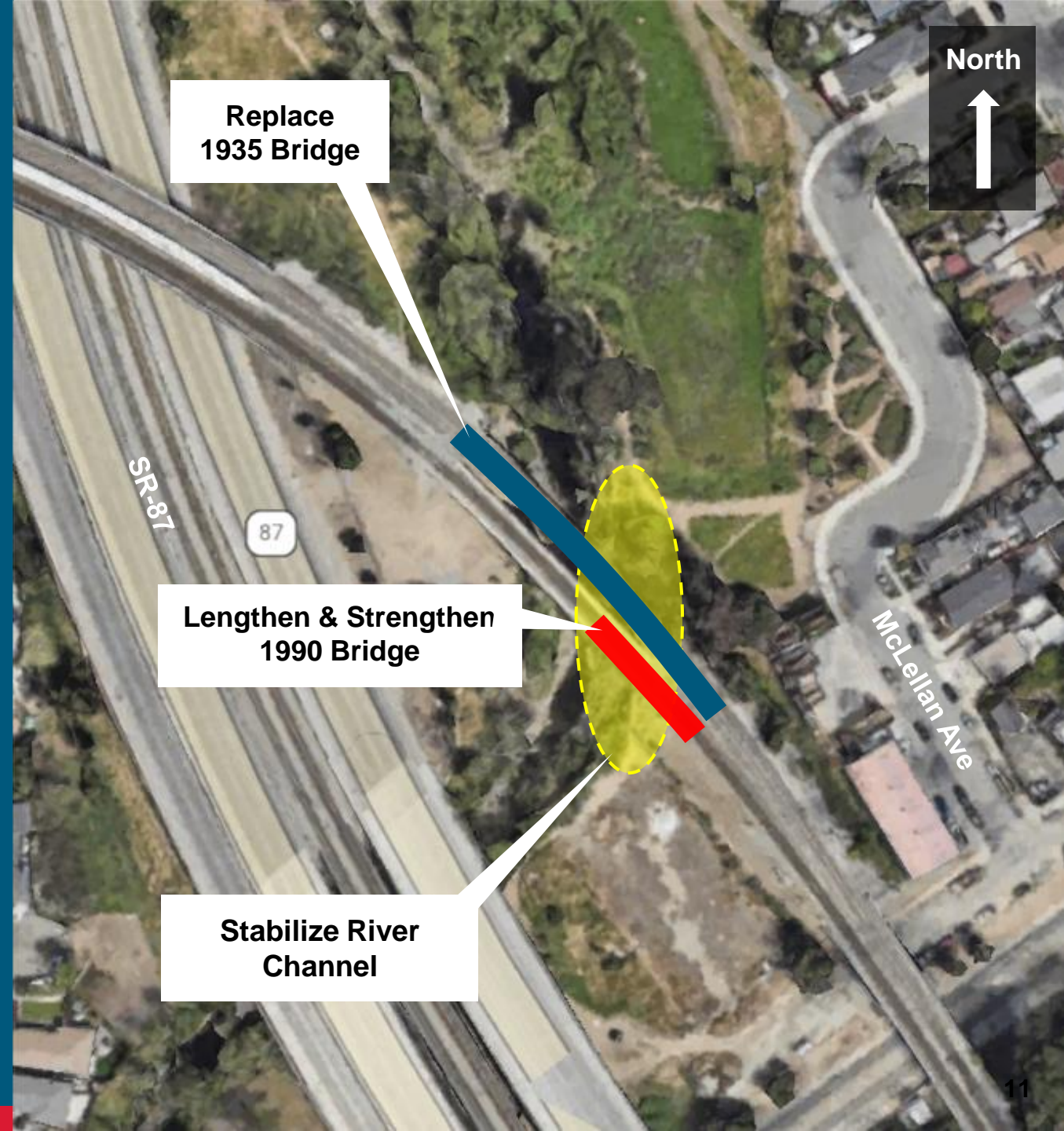
Project Need



- High flow velocity and associated bank failures during storm events threaten the integrity of the bridges
- Multiple emergency repair/stabilization projects since 2008 to address bank failures threatening to undermine abutments

Project Scope

- Replace 1935 wooden bridge (northbound track known as MT1)
- Lengthen 1990 concrete bridge (southbound track known as MT2) and upgrade to meet updated seismic standards
- Perform channel work to reduce flow velocity and mitigate erosion



What to Expect During Construction

Regular Work Hours

- Monday to Friday
- 7:30 am to 4:00 pm

As Needed

- Nights
- Weekends

Construction Activities

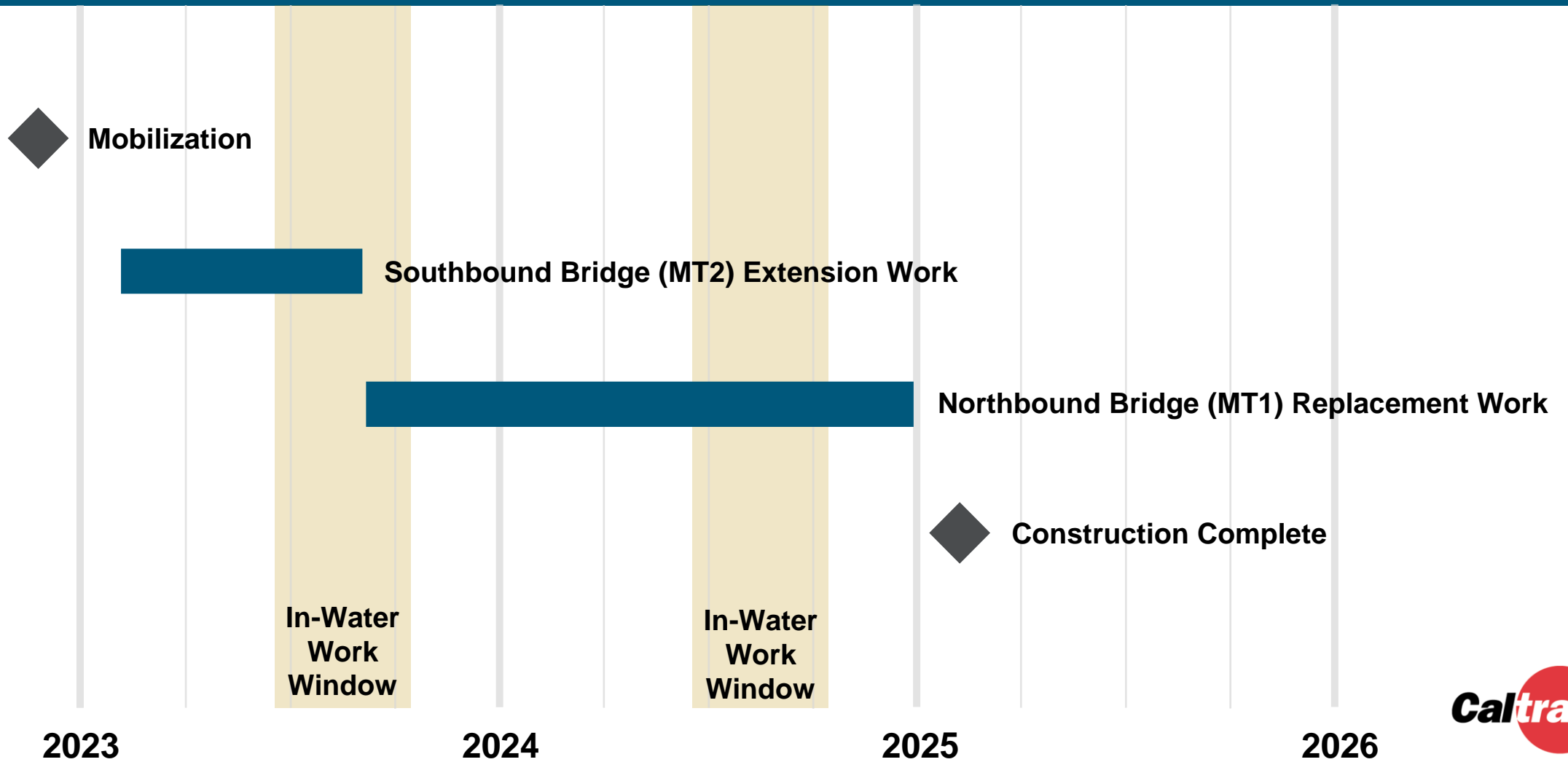
- Site Preparation
- Grading
- Utility Relocation
- Bridge Removal
- Foundation Work
- Bridge Installation
- River Stabilization
- Track Work
- Safety Oversight & Flagging
- Environmental Monitoring

Construction Best Practices

- Stabilized Construction Access/Entrances
- Silt Fencing
- Wildlife Exclusion Fencing
- Channel Restoration

The project will follow all permit conditions stipulated by regulatory agencies.

Project Schedule



Funding Sources

- California Transportation Commission
- California Department of Transportation
- Federal Transit Administration
- San Francisco County Transportation Authority
- San Mateo County Transit District
- San Joaquin Regional Rail Commission
- Santa Clara Valley Transportation Authority
- Union Pacific Railroad

Communication

**Sign Up for Weekly
Construction Updates**
[Caltrain.com/Guadalupe](https://caltrain.com/Guadalupe)

Notices

Print & Electronic

Phone - Customer Service
(800) 660-4287

Email

construction@caltrain.com

Our success will mean that we make every day life easier for the people who live and work in our communities.



Questions

FOR MORE INFORMATION

WWW.CALTRAIN.COM



Project Access

Access will be from three locations

