

# Guadalupe River Bridge Replacement Project

Caltrain Citizens Advisory Committee

February 15, 2023

Agenda Item 8



# Agenda

- Project Overview
- Construction Activities
- Schedule & Budget
- Communication
- Questions

# Presenters



**MIKE BOOMSMA**  
Project Manager



**LORI LOW**  
Acting Manager  
Government & Community Affairs

# Caltrain

Caltrain provides passenger service from San Francisco to Gilroy.

Our vision is to provide a safe, reliable, sustainable modern rail system that meets the growing mobility needs of the San Francisco Bay Area region.



# Guadalupe River Bridges

## LOCATION



# Guadalupe River Bridges

LOCATION  
DETAILED VIEW



# Current Operating Environment

Bridges also used by Union Pacific Railroad for freight service; and Amtrak and ACE for passenger service.



# Project Need



- Caltrain operates on two tracks in the project area
- The 1935 Wooden Bridge (northbound track known as MT1) is seismically vulnerable, has been damaged by multiple fires, and structurally requires immediate replacement
- The Guadalupe River channel suffers erosion problems, resulting in multiple emergency repairs to address bank failures adjacent to the bridges



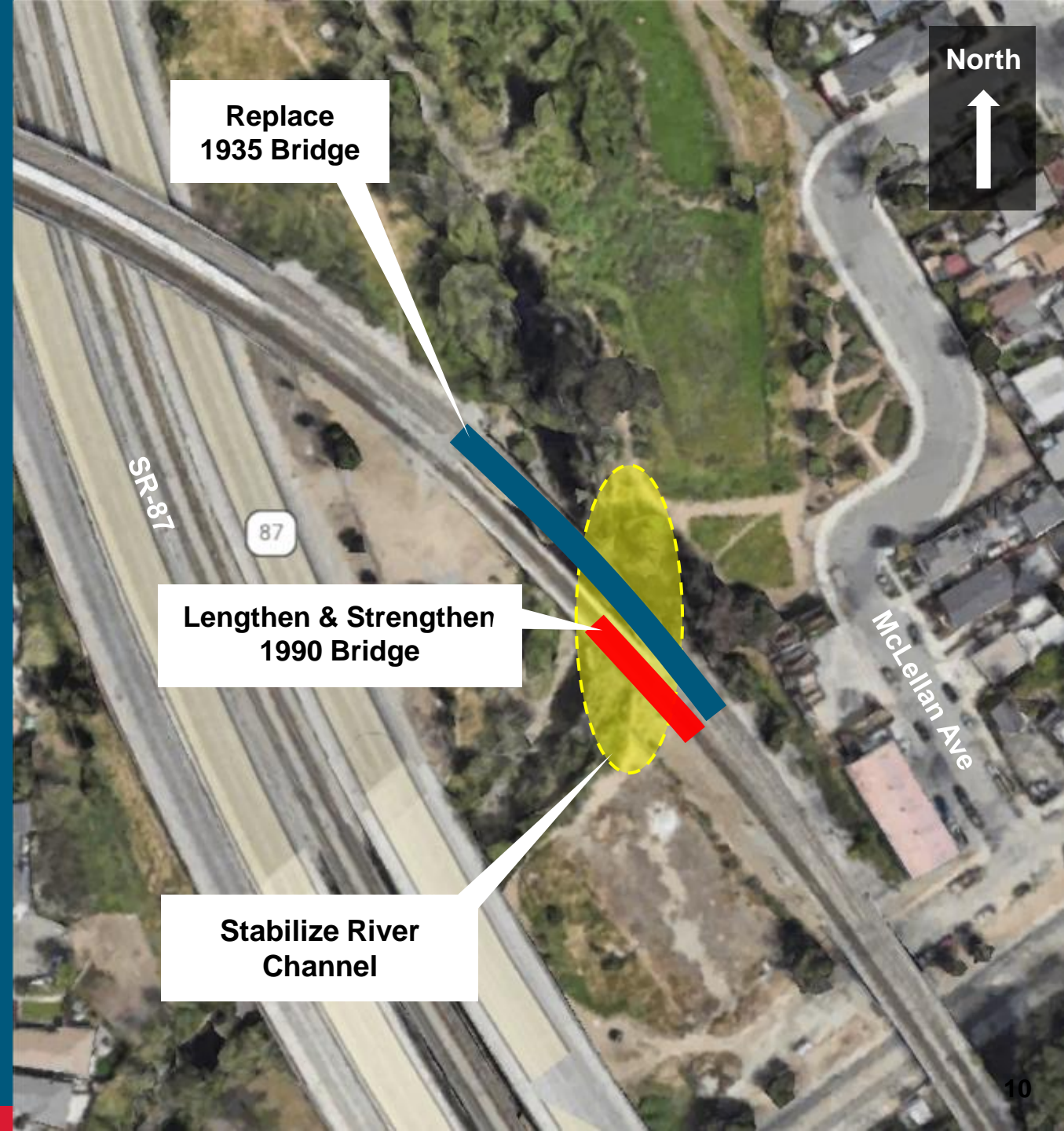
# Project Need



- High flow velocity and associated bank failures during storm events threaten the integrity of the bridges
- Multiple emergency repair/stabilization projects since 2008 to address bank failures threatening to undermine abutments

# Project Scope

- Replace 1935 wooden bridge (northbound track known as MT1)
- Lengthen 1990 concrete bridge (southbound track known as MT2) and upgrade to meet updated seismic standards
- Perform channel work to reduce flow velocity and mitigate erosion



# What to Expect During Construction

## **Regular Work Hours**

- Monday to Friday
- 7:30 am to 4:00 pm

## **Typical Night Work (if needed)**

- 7:00 pm to 3:30 am

## **Weekend Work (if needed due to weather impacts)**

- Seasonal: June to October

# Construction Activities

- Site Preparation
- Utility Relocation
- Bridge Removal
- Foundation Work
- Grading
- Bridge Installation
- River Stabilization
- Track Work
- Safety Flagging
- Environmental Monitoring

A noise monitoring plan is in place and the project will conduct noise monitoring

# Construction Best Practices

- Stabilized Construction Access/Entrances
- Silt Fences
- Channel Restoration
- Wildlife Exclusion Fencing

The project will follow all permit conditions stipulated by regulatory agencies.

# Project Schedule



# Funding Sources

- California Transportation Commission
- California Department of Transportation
- Federal Transit Administration
- San Francisco County Transportation Authority
- San Mateo County Transit District
- San Joaquin Regional Rail Commission
- Santa Clara Valley Transportation Authority
- Union Pacific Railroad

# Communication

**Sign Up for Weekly  
Construction Updates**  
[Caltrain.com/Guadalupe](https://caltrain.com/Guadalupe)

## **Notices**

Print & Electronic

**Phone - Customer Service**  
(800) 660-4287

## **Email**

construction@caltrain.com



Our success will mean that we make every day life easier for the people who live and work in our communities.



# Questions

FOR MORE INFORMATION

[WWW.CALTRAIN.COM](http://WWW.CALTRAIN.COM)

