

CALTRAIN ELECTRIFICATION



WHIPPLE AVENUE LANE CLOSURE NOTICE | March, 2023

UPCOMING ACTIVITIES AND LANE CLOSURE

On Friday, March 10, Caltrain will be performing utility potholing work in Redwood City that will require partial closures of Whipple Avenue, Stafford Street and Arguello Street railroad crossing to vehicle and pedestrian traffic. The temporary lane closures are required due to construction equipment and crews entering and exiting the work area along Whipple between Stafford and Arguello.

Work will take place on Friday March 10 between 7a.m. to 3:30 p.m.

Construction signs and illuminated directional signs will direct the merging of closed lanes along these streets to open lanes. Traffic cones will be placed on Whipple Avenue to mark the lane closures. Only one side of the lanes and sidewalks along Stafford and Arguello at Whipple Avenue will be closed at a time allowing one side to remain open during construction. Lane closure maps are provided at the bottom of this notice for vehicle and pedestrian traffic.

CONSTRUCTION ACTIVITIES

During the closure, crews will pothole for utilities for Caltrain Electrification. Work will consist of excavation, replacement of soil and repaving.

Crews may also be working along the Caltrain corridor to install OCS infrastructure outside of the closure hours noted above. Work may take place during the day and at night, with night work occurring between 10 p.m. and 5 a.m. There may also be occasional 24-hour work on weekends.

Caltrain will work with contractors to minimize night work to limit the impact to surrounding communities; however, some work must be performed at night in order to maintain regular Caltrain service. To mitigate noise and other impacts during night activities, the field team will utilize acoustical noise barrier blankets and will position lights away from residential and business areas. Caltrain has established a dedicated project hotline and email for residents concerned about these potential impacts.

PROJECT OVERVIEW

Over the last decade, Caltrain has experienced a substantial increase in ridership and anticipates further increases in ridership demand as the Bay Area's population grows. Caltrain Electrification, scheduled to be operational by 2024, will electrify and upgrade the performance, operating efficiency, capacity, safety, and reliability of Caltrain's commuter rail service.

Caltrain electrification is a key component of the Caltrain Modernization Program and consists of replacing diesel-hauled with an electric train system for services between Fourth and King Street Station in San Francisco and the Tamien Station in San Jose. The project will include the installation of new electrical infrastructure and the purchase of electric trains.

CONTACT INFORMATION

Caltrain has established a project information line and project e-mail for Caltrain Electrification to record and respond to questions and comments from residents and stakeholders.

The project information line can be reached at **650.399.9659** or toll free at **800.660.4287**.

The project e-mail is calmod@caltrain.com

Sign up for weekly construction updates can be found online at: www.caltrain.com/projects/electrification

FOR MORE INFORMATION

 calmod.org

 Para traducción llama al 1.800.660.4287
如需翻譯,請電 1.800.660.4287
Cần dịch thuật, xin gọi 1.800.660.4287

CONTACT

MAIL: 2121 S. El Camino Real, Suite 300
San Mateo, CA 94403

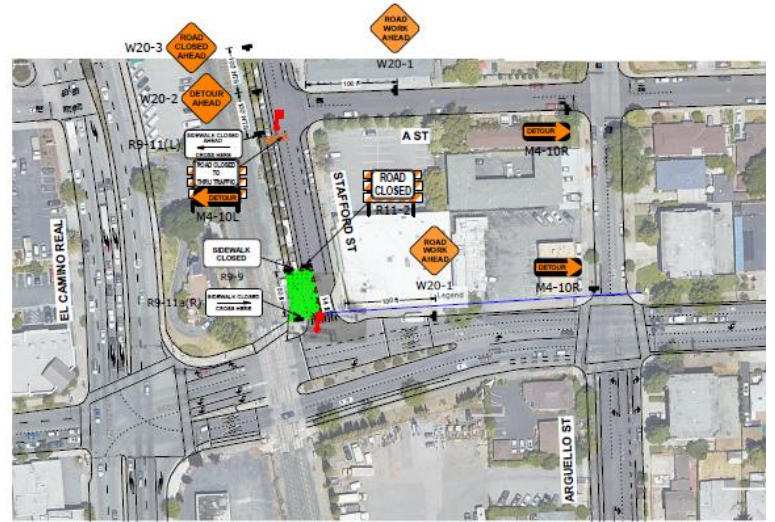
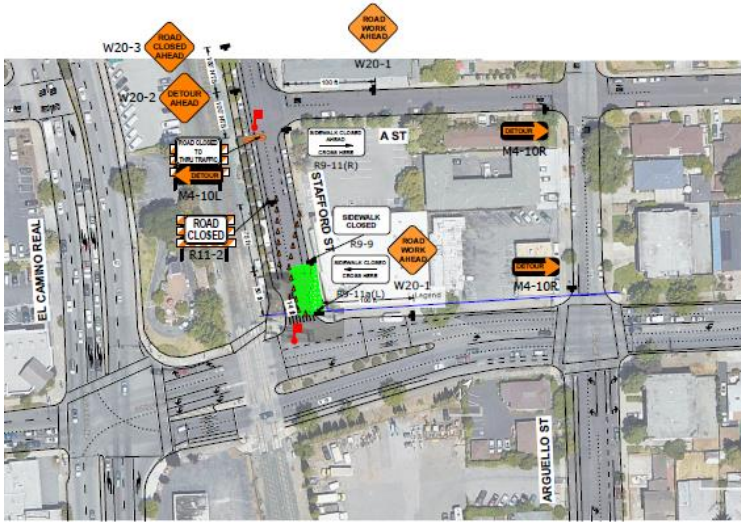
 650.399.9659

 calmod@caltrain.com

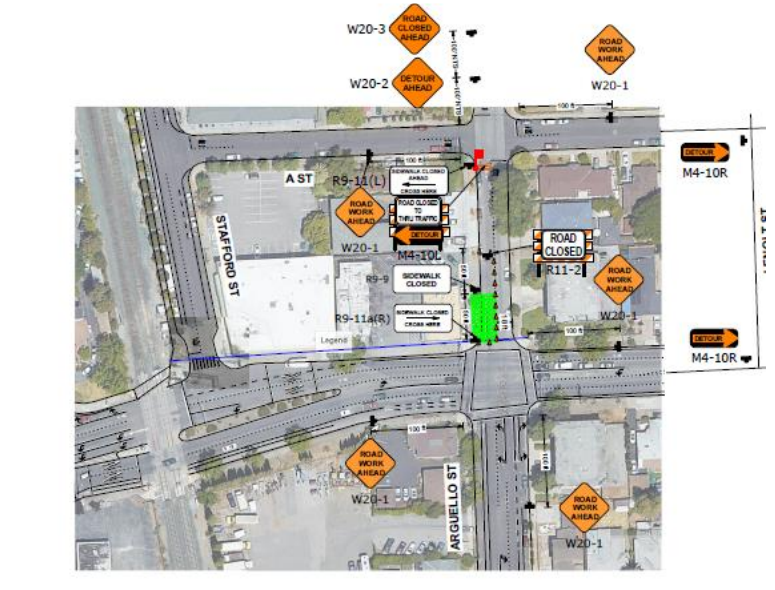
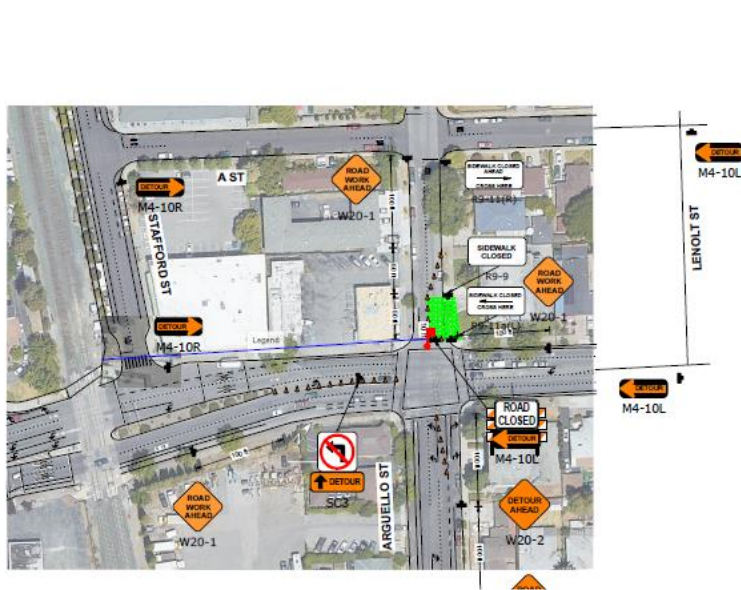
Caltrain Electrification Project

WHIPPLE AVENUE LANE CLOSURE NOTICE | March, 2023

STAFFORD ST. LANE CLOSURE MAP




ARGUELLO ST. LANE CLOSURE MAP





FOR MORE INFORMATION

 calmod.org

 Para traducción llama al 1.800.660.4287
如需翻譯,請電 1.800.660.4287
Cần dịch thuật, xin gọi 1.800.660.4287

CONTACT

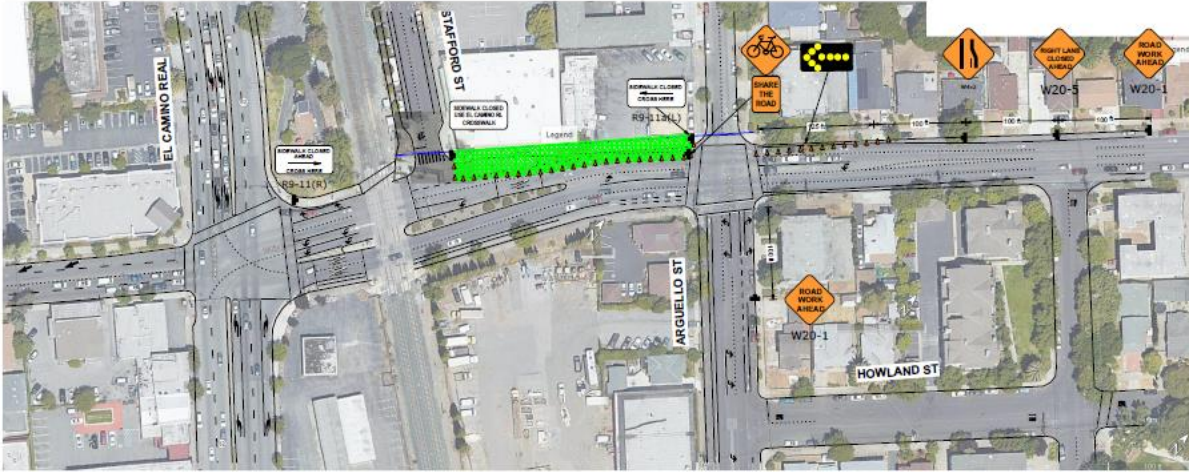
MAIL: 2121 S. El Camino Real, Suite 300
San Mateo, CA 94403

 650.399.9659
 calmod@caltrain.com




Caltrain Electrification Project

WHIPPLE AVE. LANE CLOSURE MAP





FOR MORE INFORMATION

 calmod.org

 Para traducción llama al 1.800.660.4287
如需翻譯,請電 1.800.660.4287
Cần dịch thuật, xin gọi 1.800.660.4287

CONTACT

MAIL: 2121 S. El Camino Real, Suite 300
San Mateo, CA 94403

 650.399.9659
 calmod@caltrain.com

