

CALTRAIN ELECTRIFICATION



ATHERTON SIGNAL HOUSE CONSTRUCTION PARKING NOTICE | March 2023

UPCOMING ACTIVITIES AND CLOSURE

Caltrain Electrification crews have begun construction activities near the Watkins Avenue railroad crossing in order to construct a new railroad signal house which will help regulate signaling power to the electric trains. The new signal house will replace the existing signal house at Watkins Avenue and Dinkelspiel Station Lane. In addition, crews will begin working to replace the existing power pedal near the Atherton station at the parking lot along Dinkelspiel Station Lane.

A temporary closure of five (5) parking stalls near the power pedal as well as a partial closure of the pedestrian platform will occur March 22-24 to accommodate this work.

A map of the temporary closure area and parking stalls is provided at the bottom of this notice.

CONSTRUCTION ACTIVITIES

Construction will occur in two (2) separate phases. The first phase will consist of laying a concrete pad for the new signal house. Once the concrete pad has cured, Caltrain crews will return for the construction of the new signal house and removal of the old signal house. The footprint of new signal house will be 8' (W) x 14' (L) x 10.5' (H).

Crews will access the construction site utilizing the existing easement.

The replacement of the signal house is expected to be completed in 2-4 months.

PROJECT OVERVIEW

Over the last decade, Caltrain has experienced a substantial increase in ridership and anticipates further increases in ridership demand as the Bay Area's population grows. Caltrain Electrification, scheduled to be operational by 2024, will electrify and upgrade the performance, operating efficiency, capacity, safety, and reliability of Caltrain's commuter rail service.

Caltrain Electrification is a key component of the Caltrain Modernization Program and consists of replacing diesel-hauled with an electric train system for services between Fourth and King Street Station in San Francisco and the Tamien Station in San Jose. The project will include the installation of new electrical infrastructure and the purchase of electric trains.

CONTACT INFORMATION

Caltrain has established a project information line and project e-mail for Caltrain Electrification to respond to questions and comments from residents and stakeholders.


The project information line can be reached at **650.399.9659** or toll free at **800.660.4287**

The project e-mail is calmod@caltrain.com

Sign up for weekly construction updates at: www.caltrain.com/projects



FOR MORE INFORMATION

 calmod.org

 Para traducción llama al 1.800.660.4287
如需翻譯,請電 1.800.660.4287
Cần dịch thuật, xin gọi 1.800.660.4287

CONTACT

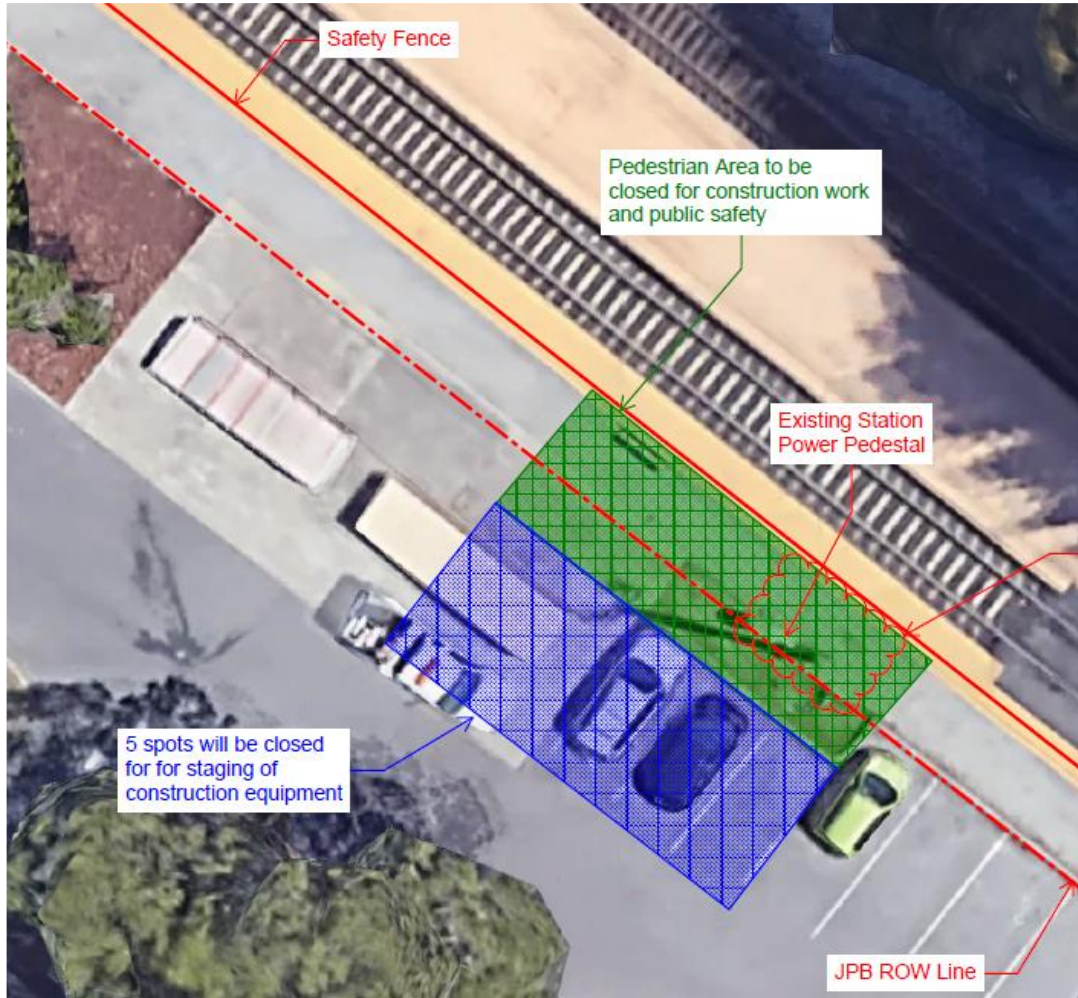
MAIL: 2121 S. El Camino Real, Suite 300
San Mateo, CA 94403

 650.399.9659
 calmod@caltrain.com

Caltrain Electrification Project


WATKINS AVENUE SIGNAL HOUSE CONSTRUCTION NOTICE | March 2023

CONSTRUCTION EQUIPMENT STAGING AREA SITE LOCATION MAP





FOR MORE INFORMATION

 calmod.org

 Para traducción llama al 1.800.660.4287
如需翻譯,請電 1.800.660.4287
Cần dịch thuật, xin gọi 1.800.660.4287

CONTACT

MAIL: 2121 S. El Camino Real, Suite 300
San Mateo, CA 94403

 650.399.9659
 calmod@caltrain.com

