



Monthly Safety and Security Report April 2015

Safety Highlights

The long awaited six-car trainsets went into service this month. The longer trainsets have changed typical pedestrian crossing characteristics, at the Sunnyvale station. When a five-car trainset was completely stopped at the station, the pedestrian crossing gates would go up and allow pedestrians to cross. When the train was ready to leave, the gates were activated and the pedestrian crossing would close, you would see the flashing lights, hear the bells ringing and the train would sound its horn before departing the station once the crossing was deemed safe. With a six-car trainset the pedestrian crossing will remain closed the entire time the train is at the station.



In order to ensure the safety of train operations and inform our customers about the change at this pedestrian crossing, Caltrain's Operations and Safety departments provided safety monitors for the first week of six-car train service.

Education

Rail Safety Presentations/Activities	City	Attendees
Suicide Prevention and Community Roundtable	Mountain View	40
San Mateo Suicide Prevention Committee	San Mateo	5
San Mateo County Crisis Collaboration	Redwood City	50
Project Safety Net	Palo Alto	50



Monthly Safety and Security Report April 2015

Enforcement

Event	APR 2015	YTD 2015	APR 2014	YTD 2014
Felony and Misdemeanor Arrests (all)	10	25	24	57
Parking Citations	267	729	231	1092
Traffic Citations	41	113	39	116
All Other Infraction Citations (including trespassing)	62	252	65	222
Ejections/Contacts: Train, Station, Right of Way	32	117	118	269
Proof-of-Payment Citations	98	485	156	555
Crisis Interventions w/ Emergency Commitments	3	16	6	14
Total Calls For Police Service	920	3542	808	3149

Significant Events

April 3: Transit Police responded to the Mountain View Caltrain Station on a report of an adult male who was making suicidal statements. The person was located, taken into protective custody, and transported to emergency psychiatric care.

April 15: Transit Police responded to the right of way in Mountain View on a report of an adult female who laid between the railway tracks as the southbound train traveled over the top of her. She fled the area and was unharmed as a result of the incident.

April 16: Transit Police responded to the Santa Clara Caltrain Station on a report of an adult female who had been struck by a northbound Caltrain. She survived and was transported via ambulance for further emergency medical treatment. The incident is under investigation by Transit Police.

April 26: Transit Police responded to the right of way in Brisbane on a report of a male juvenile who had been struck by a southbound Caltrain. He survived and was transported via ambulance for further emergency medical treatment. The incident is under investigation by Transit Police.

April 29: Transit Police responded to the San Francisco Caltrain Station on a report of an adult male who was a danger to others. The person was located, taken into protective custody, and transported to emergency psychiatric care.

April 1 – April 30: During this period Transit Police continued several enforcement measures in association with Caltrain’s special baseball service:

- Extra security details were assigned to the 4th and King Station in San Francisco.
- Three arrests were made for public intoxication.



Monthly Safety and Security Report April 2015

April 1 – April 30: Transit Police responded to 10 reports of persons trespassing on the Caltrain right of way. In each instance, the person was cited and released.

April 1 – April 30: Transit Police conducted routine security checks at various Caltrain stations. As a result, six persons were arrested on outstanding misdemeanor and felony warrants and booked into county jail.

April 1 – April 30: Transit Police received eight reports of bicycle thefts from various Caltrain stations. The largest number of reported thefts (seven) occurred at the Palo Alto University Avenue Caltrain Station.

April 1 – April 30: Transit Police authorized the removal of six abandoned vehicles at various Caltrain stations.

April 1 – April 30: Transit Police received two reports of stolen vehicles and three reports of vehicle burglaries from various Caltrain stations. The largest number of thefts (two) occurred at the Bayshore Caltrain Station in Brisbane. Transit Police recovered one stolen vehicle from the Tamien Caltrain Station in San Jose.

April 1 – April 30: Transit Police responded to three reports of intoxicated persons at various Caltrain stations. In each instance, the person was arrested and booked into county jail.

April 1 – April 30: Transit Police received two reports of graffiti vandalism at various stations. There are no suspect leads.

Engineering

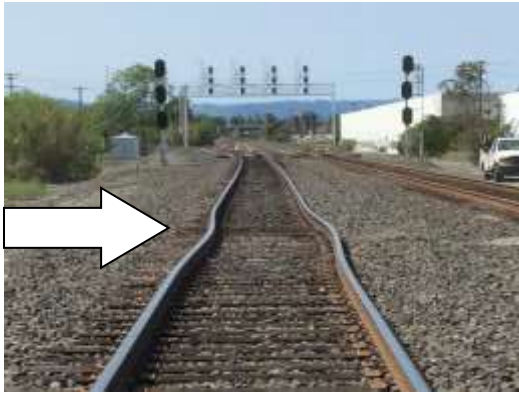
Maintenance of Way

TASI completed eight months of injury-free work

- Installed over 13 tons of main line ballast
- Surfaced 26,028 lineal feet of track
- Completed seven thermite welds
- Surfaced seven mainline turnouts

Monthly Safety and Security Report April 2015

- Repaired a deviation on the track near CP Bowers MP 41.6



Shortly after the Rail was struck



After work was completed

- Rehabilitated the at-grade crossing at Linden Avenue in South San Francisco during the weekend of April 24 – 27. Crews replaced the rail, surfaced both tracks and replaced the asphalt pavement on the approaches to the crossing.



Surfacing Linden Avenue



Reinstall grade crossing panels



The finished product at Linden Avenue

Monthly Safety and Security Report April 2015

Stations

- Slurry seal coated, restriped and renumbered the parking lots at Broadway and Lawrence Stations



- Installed new “anti-theft resistant” pull box covers at Tamien Station to prevent copper wire theft



Monthly Safety and Security Report April 2015

- Performed graffiti abatement on all crash beams and four bridges in San Mateo



- Installed new signs for six-car service at multiple stations



22nd Street Station



Belmont Station