



Monthly Safety and Security Report August 2015

Safety Highlights

Safety starts with serious preparation at Caltrain. Before construction gets underway along the tracks, the Caltrain Employee In Charge (EIC) provides a Job Safety Briefing and then sets up the protected work area for the crew by placing signal flags that let the train Engineer know that a work crew is up ahead. This signal flag tells the Engineer to contact the EIC for approval to pass through the work zone. In the event approval is not provided by the EIC, the Engineer must stop the train before entering the work area.



While the EIC sets up the protected work area, the construction crew makes its own preparations by conducting pre-use inspections of the machines they are using along the Caltrain tracks.

At Caltrain, safety starts and finishes with good planning, preparation and training.

Education

Rail Safety Presentations/Activities	City	Attendees
Beth El Preschool – rail safety presentations	Burlingame	50
Santa Clara County Suicide Prevention Working Group	San Jose	10
Burlingame Lions Club – rail safety presentation	Burlingame	30
San Mateo Suicide Prevention Committee	San Mateo	7



Monthly Safety and Security Report August 2015

Enforcement

Event	AUG 2015	YTD 2015	AUG 2014	YTD 2014
Felony and Misdemeanor Arrests (all)	28	85	17	132
Parking Citations	338	2263	393	2551
Traffic Citations	48	299	24	231
All Other Infraction Citations (including trespassing)	98	572	46	447
Ejections/Contacts: Train, Station, Right of Way	29	281	56	568
Proof-of-Payment Citations	227	1039	176	1098
Crisis Interventions w/ Emergency Commitments	4	25	3	26
Total Calls For Police Service	1065	7783	833	6484

Significant Events

Aug. 1 – Aug. 31: During this period Transit Police continued several enforcement measures in association with Caltrain’s special baseball service.

Aug. 1 – Aug. 31: Transit Police responded to three reports of intoxicated persons at various Caltrain Stations. In each instance, the person was arrested and booked into county jail.

Aug. 1 – Aug. 31: Transit Police responded to 17 reports of persons trespassing on the Caltrain right of way. In each instance, the person was cited and released.

Aug. 1 – Aug. 31: Transit Police conducted routine security checks at various Caltrain stations. As a result, four persons were arrested on outstanding misdemeanor and felony warrants and were booked into county jail.

Aug. 1 – Aug. 31: Transit Police received two reports of vehicular vandalism and auto burglary from various Caltrain stations. These cases are under investigation by Transit Police.

Bike Thefts:

- Aug. 1 – Aug. 31: Transit Police received 12 reports of bicycle thefts from various Caltrain stations. The largest number of thefts (five) occurred at the Palo Alto University Avenue Caltrain Station.
- Aug. 8: Transit Police were at the San Francisco Caltrain Station on a special detail. They observe three males attempting to steal bicycles from the rack in the courtyard. The individuals were cited and released.



Monthly Safety and Security Report August 2015

Aug. 5: Transit Police responded to the Redwood City Caltrain Station on a report of an adult female who was witnessed by a G4S security guard walking onto the Caltrain train tracks. The person was located, taken into protective custody, and transported to emergency psychiatric care.

Aug. 7: Transit Police were conducting a routine patrol check at the right of way in Menlo Park during which a woman was contacted near the Ravenswood Grade Crossing. She indicated that she wanted to commit suicide. She was taken into protective custody, and transported to emergency psychiatric care.

Aug. 12: Transit Police responded to the South San Francisco Caltrain Station on a report of an adult female who was acting erratically and was unable to care for herself. The woman was located, taken into protective custody, and transported to emergency psychiatric care.

Aug. 16: Transit Police responded to the Redwood City Caltrain Station on a report of an adult female who was threatening suicide by train. The woman was located, taken into protective custody, and transported to emergency psychiatric care.

Engineering

Maintenance of Way

TASI MOW team completed one year of injury free work!!!

- Surfaced 15,206 lineal feet of track
- Completed 19 thermite welds
- Tree trimming and vegetation removal at 22 locations including this location at Menlo Park



Before



After

Monthly Safety and Security Report August 2015

- CP coast tip down tower brush removal



Before

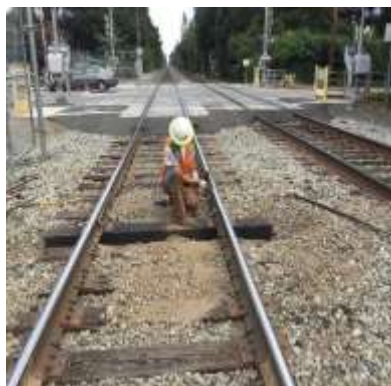


After

- Repaired fencing at eight locations including this gate below



- Installed 58 cross ties and 15 switch ties (including this new cross tie at near Glenwood Avenue, Menlo Park below)



Monthly Safety and Security Report August 2015

Signal & Communications

- Retrofitted some existing signals with an Light Emitting Diodes (LED) which improves visibility at greater distances



Existing Signal at
San Jose Diridon



New LED lens



Increase luminosity at night

Stations

- Installed anti skateboarding hardware on the concrete wall at San Bruno station



- Repainted the Pedestrian Tunnels at San Bruno Station

