

# CALTRAIN CAPITAL IMPROVEMENT PLAN (CIP) DEVELOPMENT

JPB Board Meeting

May 4, 2023



# AGENDA

- What is a CIP?
- Why Now?
- What Will be Delivered and When?
- How Can You Help?

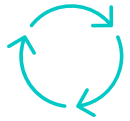


# WHAT IS A CIP?



# WHAT IS A CIP?

**It is a long-term planning and fiscal management tool** used to coordinate the identification and financing of capital improvements



- Living document, reviewed and updated frequently in parallel to the capital budget process.



- Covers a multi-year period (commonly ten years)



- Comprehensive list of maintenance, renewal, and enhancement capital investments



- Mission and values-driven allocation and prioritization of funds and resources between projects over time

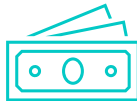
# WHAT DOES A CIP TYPICALLY INCLUDE?



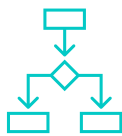
- A **prioritization framework** based on agency's goals



- **Description, timeline** and **cost** of **capital** improvement **projects**



- Identification of **funding** strategies, schedule and needs



- **Process** integration with planning, engineering, operations & maintenance, budgeting, and funding

**+ A Rolling Program:** *Allows for substantive updates every 4 to 5 years for near-term alignment with capital budget needs and available funding sources.*

# WHAT ARE THE BENEFITS OF A CIP FOR CALTRAIN?

- A clear **roadmap** for the agency's **capital improvement** at all phases
- Align objectives and goals with **day-to-day operations**, the **Long-Range Service Vision** and **third-party projects** that require Caltrain's participation
- **Efficient, transparent** and **integrated process** to develop capital projects/programs and the capital budget
- A tool to manage **limited resources** and **funding**

## What Is a Third-Party Project?

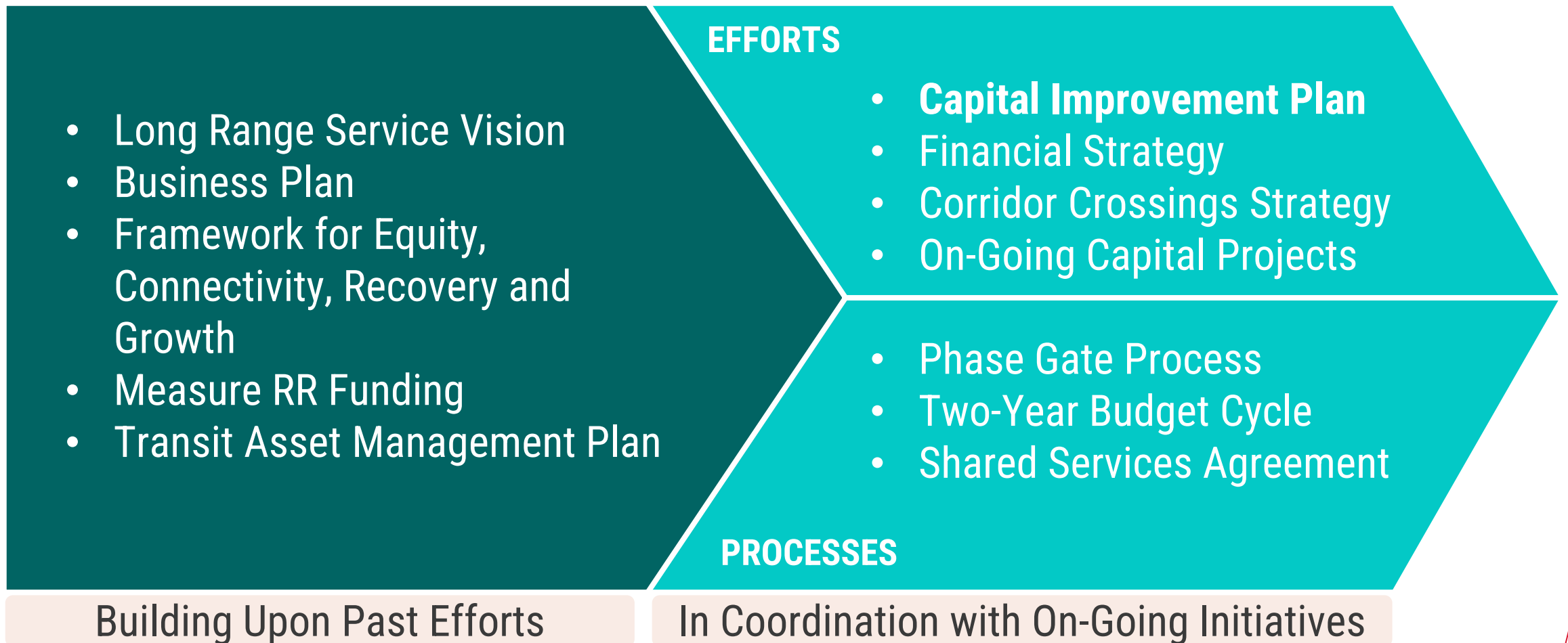
- Major Projects – *DTX, Diridon Station, Redwood City Station, Grade Separation Program*
- Any projects in Caltrain Right-of-Way that could affect train operations



# WHY NOW?



# MINDFUL OF PAST EFFORTS AND ON-GOING INITIATIVES





# DEDICATED PROJECT TEAM

## Caltrain Core Team

- **Dahlia Chazan**  
*Deputy Chief of Planning*  
**Project Director**
- **Nicole Soultanov**  
*Deputy Director of Capital Planning*  
**Project Manager**
- **Lyne-Marie Bouvet**  
*Principal Planner, CIP*  
**Deputy Project Manager**

## WSP Consultant Core Team

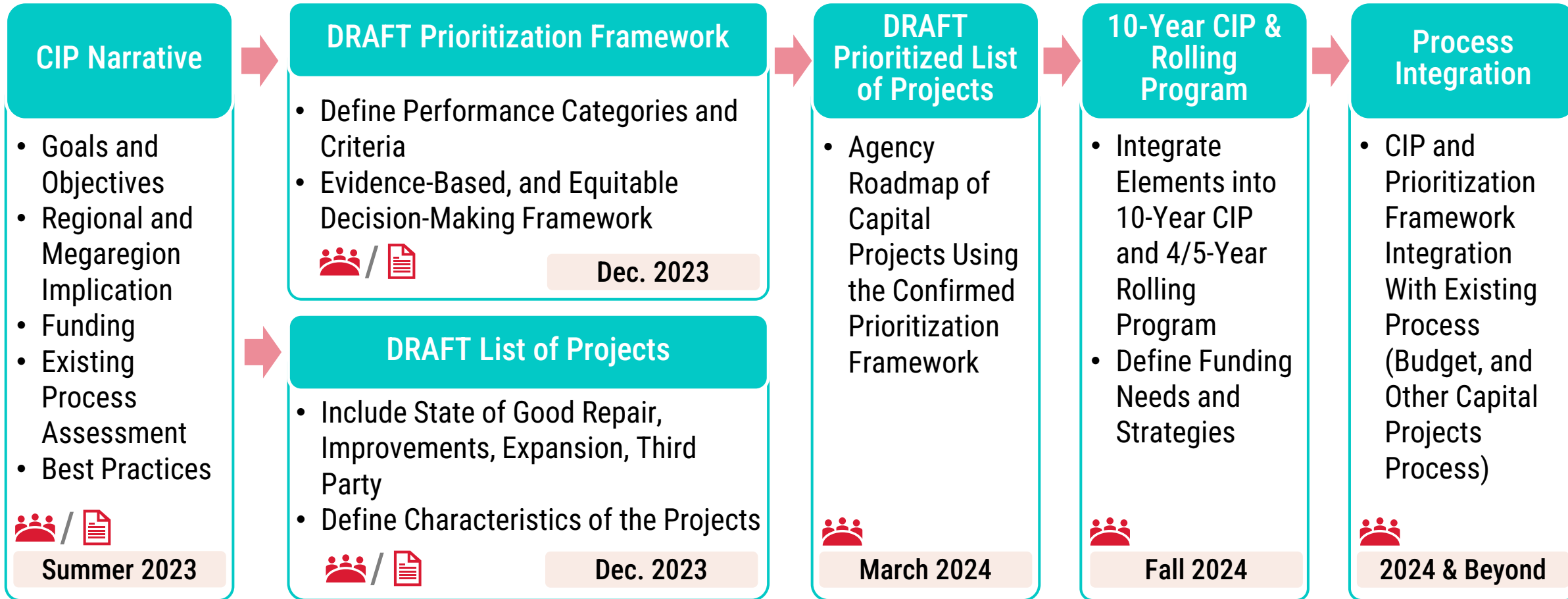
- **Lauren German**  
**Project Manager**
- **Yann Jacob**  
**Deputy Project Manager**
- **Matt Baratz**  
**Principal-in-Charge**
- **Andrew Strumolo**  
**Quality Manager**



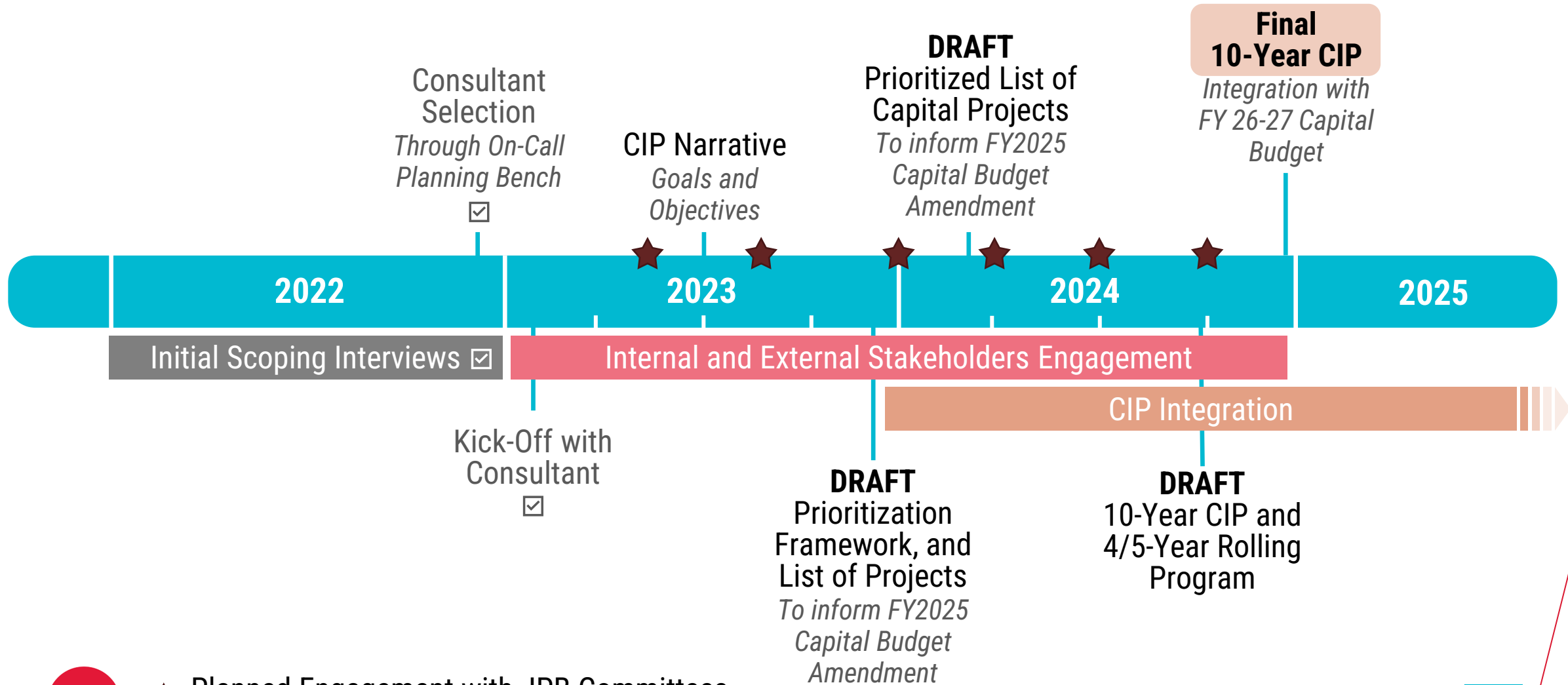


# WHAT WILL BE DELIVERED AND WHEN?

# DELIVERY OF KEY PRODUCTS



# PROJECT TIMELINE



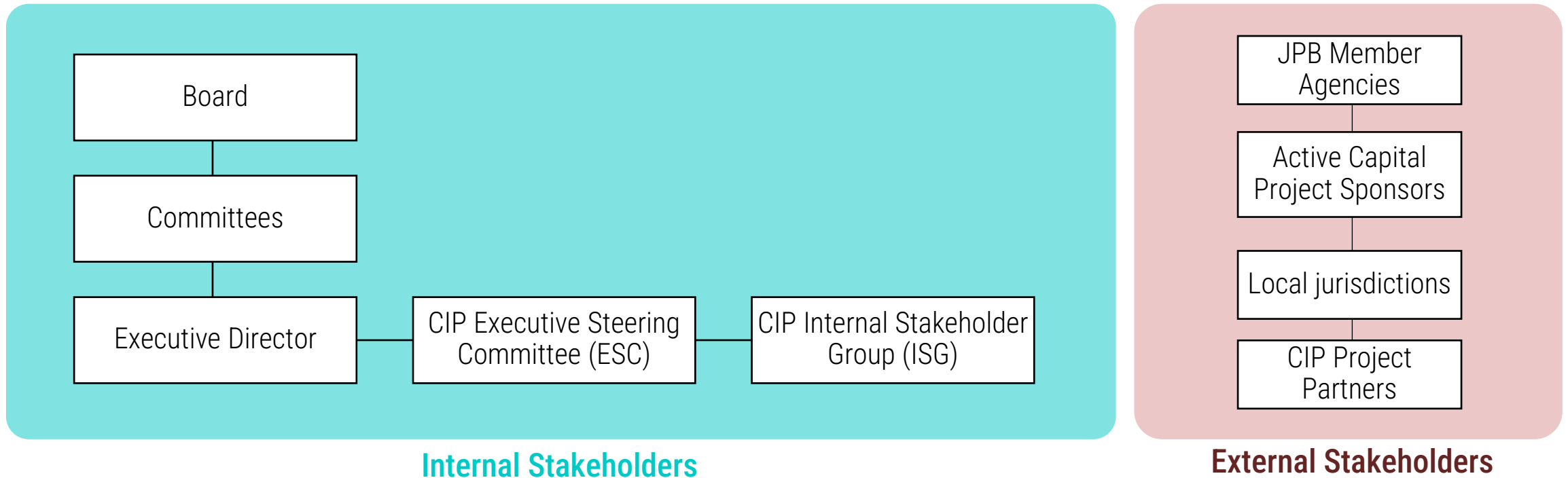
★ Planned Engagement with JPB Committees, and Board

# HOW CAN YOU HELP?



# ENGAGING STAKEHOLDERS

## Caltrain Core Team + Consultant Team



# INTERNAL ENGAGEMENT – ROLES

CIP Executive Steering Committee	CIP Internal Stakeholder Group	Executive Director, Board & JPB Committees
<ul style="list-style-type: none"> <li>• <b>Oversight</b> of business alignment, strategy, technical advice, and governance</li> <li>• <b>Advocates</b> for the CIP development process with messaging to department staffs</li> </ul>	<ul style="list-style-type: none"> <li>• Active <b>insight</b> on deliverables and processes to maximize value and ease integration</li> <li>• Ensure <b>alignment</b> with internal stakeholder needs</li> <li>• Build <b>consensus</b> on the CIP</li> </ul>	<ul style="list-style-type: none"> <li>• Oversight, strategy, and authorization</li> </ul>



# EXTERNAL ENGAGEMENT

- Understanding that the CIP is primarily an internal financial and planning tool
- Goals
  - Keep our partners **informed** on the development of the CIP
  - Build **trust** by ensuring funds and resources are managed properly
  - Establish our **leadership** in capital projects along the corridor.
- Audience
  - JPB Member Agencies
  - Active Capital Project Sponsors
  - Local Jurisdictions
  - CIP Project Partners







# QUESTIONS & COMMENTS