

CALTRAIN ELECTRIFICATION



16TH STREET GRADE CROSSING PEDESSTRIAN ACCESS NOTICE | August 2023

UPCOMING ACTIVITIES AND ACCESS IMPACTS

Beginning August 7 until August 25, Caltrain will be performing grounding and bonding work for the signaling system that will require a temporary closure of one side at a time of the 16th Street pedestrian crossing to one side of pedestrian traffic on Mondays-Fridays. **Vehicular traffic will not be impacted.**

From August 7 to 26 between the hours of 8:30 am and 4 pm there will be a temporary pedestrian closure of one side of the 16th Street crossing

Illuminated and directional signs will direct pedestrians to the opposite side of the crossing. **Only one side of each crossing will be closed at a time.**

A sample sidewalk diversion plan is provided at the bottom of this notice.

CONSTRUCTION ACTIVITIES

During the temporary access closures, crews will install a grounding and bonding for the signaling system for Caltrain Electrification. Work will consist of placement of 10-foot rods at each corner of the crossing to ground electricity, testing of the rods, burial of the rods and restoring any galvanized steel and paint to pre-existing conditions.

Caltrain has established a dedicated project hotline and email for residents concerned about these potential impacts.

PROJECT OVERVIEW

Over the last decade, Caltrain has experienced a substantial increase in ridership and anticipates further increases in ridership demand as the Bay Area's population grows. Caltrain Electrification, scheduled to be operational by 2024, will electrify and upgrade the performance, operating efficiency, capacity, safety, and reliability of Caltrain's commuter rail service.

Caltrain electrification is a key component of the Caltrain Modernization Program and consists of replacing diesel-hauled with an electric train system for services between Fourth and King Street Station in San Francisco and the Tamien Station in San Jose. The project will include the installation of new electrical infrastructure and the purchase of electric trains.

CONTACT INFORMATION

Caltrain has established a project information line and project e-mail for Caltrain Electrification to record and respond to questions and comments from residents and stakeholders.

The project information line can be reached at **650.399.9659** or toll free at **800.660.4287**.

The project e-mail is calmod@caltrain.com

Sign-up for weekly construction updates can be found online at: <https://www.caltrain.com/projects/electrification/get-involved>

FOR MORE INFORMATION

 calmod.org

Para traducción llama al 1.800.660.4287

如需翻譯,請電 1.800.660.4287

Cần dịch thuật, xin gọi 1.800.660.4287

CONTACT

MAIL: 2121 S. El Camino Real, Suite 300
San Mateo, CA 94403

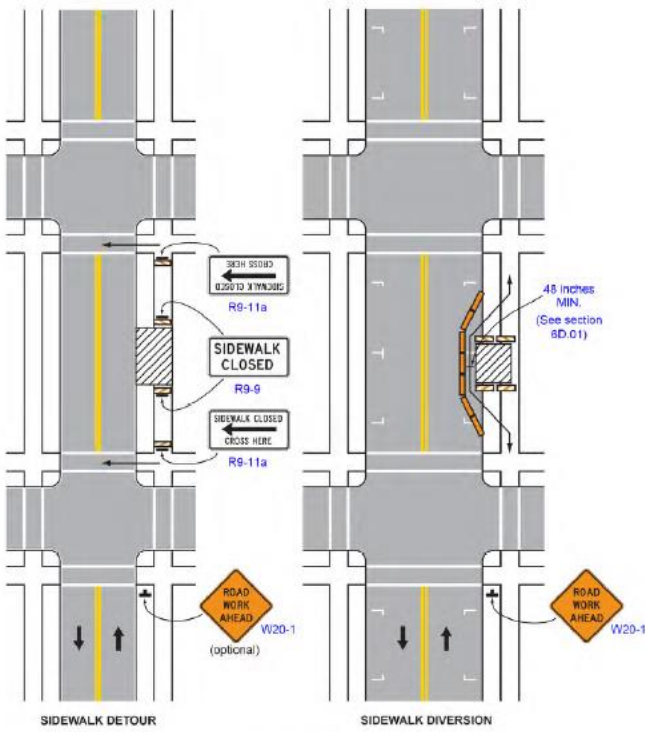
 650.399.9659

 calmod@caltrain.com


CALTRAIN ELECTRIFICATION

16TH STREET GRADE CROSSING PEDESTRIAN ACCESS NOTICE | August 2023

SAMPLE PEDESTRIAN DIVERSION ROUTE




FOR MORE INFORMATION

 calmod.org

Para traducción llama al 1.800.660.4287
如需翻譯,請電 1.800.660.4287
Cần dịch thuật, xin gọi 1.800.660.4287

CONTACT

MAIL: 2121 S. El Camino Real, Suite 300
San Mateo, CA 94403

 650.399.9659

 calmod@caltrain.com

