



# Parking Track versus Maintenance Facility

On October 8, 2019, Caltrain and the City of San Mateo held a community meeting on the replacement San Mateo Parking Track. At the meeting, participants asked for additional information which is provided in this document.

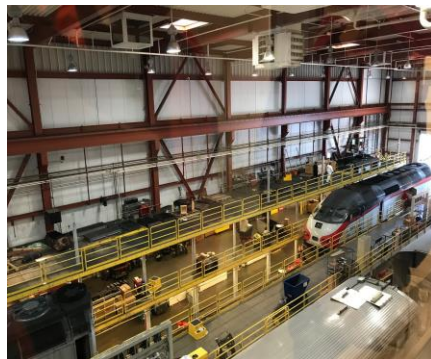
## Key Elements of a Parking Track & Maintenance Facility

	Parking Track	Maintenance Facility
<b>Size</b>	Spur of track (approx. 1,000 feet) and access road	20-acre facility that includes the central control facility; a 58,000 square foot maintenance shop; water treatment plant and extra tracks; 250-foot tunnel that allows workers to cross the yard--which has live, operating tracks--safely; and on-site fueling that allows trains to fuel at the facility and eliminates the need for daily fuel truck deliveries.
<b>Purpose</b>	Temporary storage of train equipment	To perform mechanical maintenance on locomotives, passenger cars, and other equipment. Includes the cleaning of the interiors and exteriors as well.
<b>Staff</b>	None, unless temporarily there to move equipment	Approximately 100 mechanical department employees and 120 train crew members
<b>Activity Occurs</b>	On corridor tracks (not on site)	At facility (on site)
<b>Frequency</b>	~Once a month at proposed San Mateo parking track location	Daily (AM and PM)

## Caltrain's Only Maintenance Facility – The Centralized Equipment Maintenance & Operations Facility (CEMOF)

Caltrain has one maintenance facility for the entire corridor located in San Jose. Its 20-acre facility with ~100 mechanical department employees and 120 train crew members.



View a [video](#) of CEMOF (video created by public).



# Existing Parking Track Examples

A parking track is a temporary parking or storage area for equipment that includes a spur of track (~1000 ft) and an access road. There are parking tracks approximately every three to four miles along the corridor. Equipment is moved from the parking track to a location for track maintenance due to wear and tear. A parking track allows for efficient use of limited work windows to keep railroad functioning properly. Parking tracks also support capital projects, such as the 25th Avenue Grade Separation Project and Caltrain Electrification, and may be used on a rare occasion for breakdowns to clear trains off the mainline. Parking tracks are not maintenance facilities.

Below are examples of existing parking tracks on the Caltrain corridor.

City / Cross Streets	Adjacent Area	Map	Photo
<p><a href="#">San Francisco</a> (Mission Bay)</p> <p>B St. &amp; 16th St. (under 280)</p>	<p>Residential, Commercial &amp; Former Yard</p>	 <p style="text-align: center;">Parking track underneath freeway.</p>	 <p style="text-align: right;">San Francisco Parking Track (Mission Bay)</p>

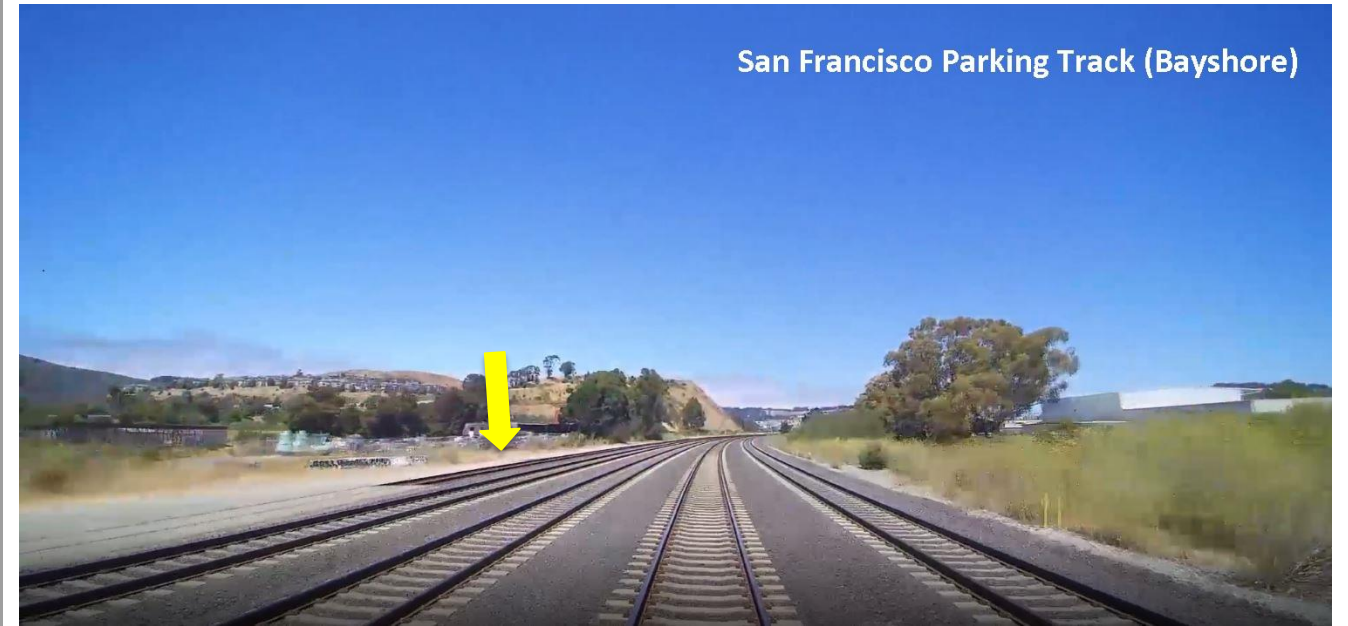
[San Francisco](#)  
(Bayshore)

Bayshore Blvd. &  
Tunnel Ave.

Former Bay  
Shore Yard



San Francisco  
Parking Track  
(Bayshore)



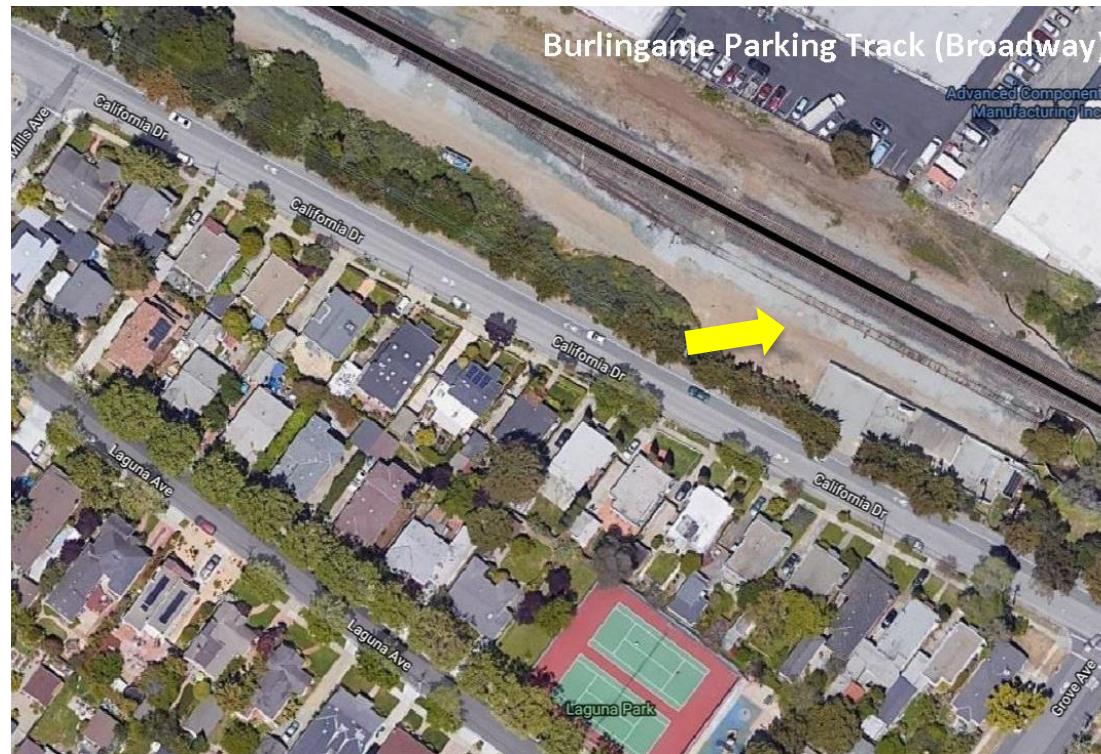
San Francisco Parking Track (Bayshore)

Note: Nearby commercial machinery & equipment

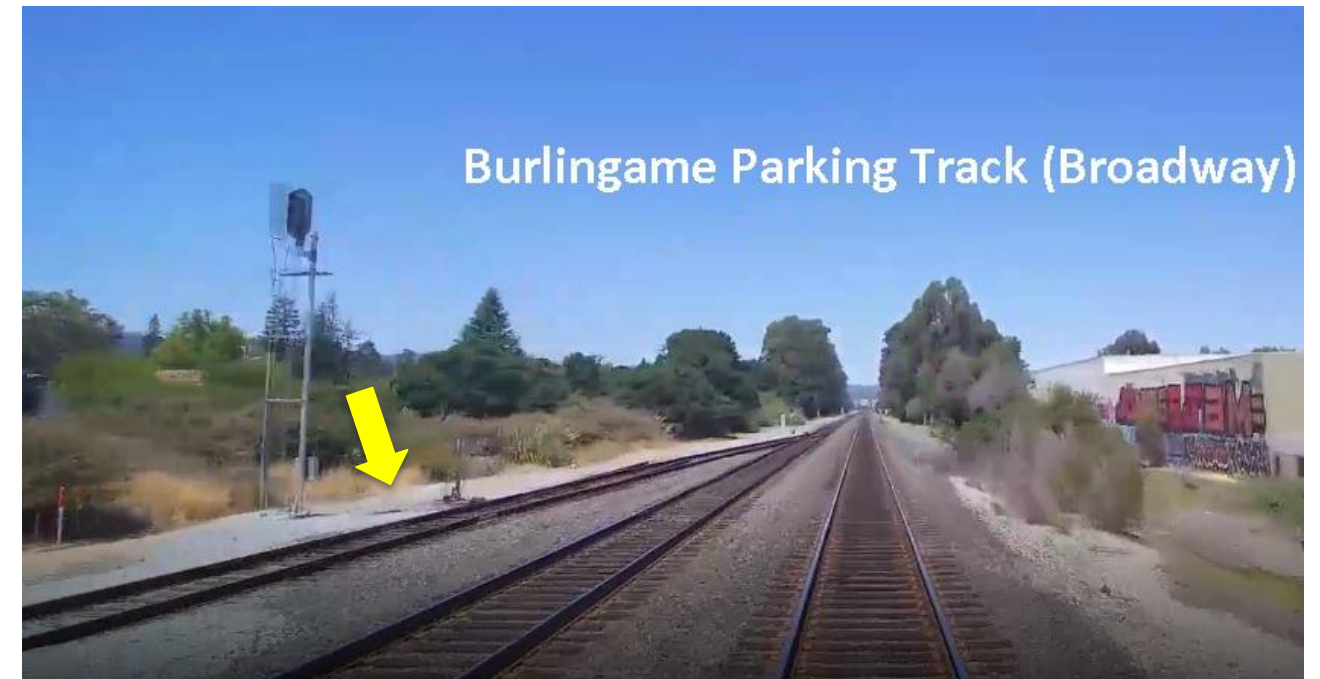
[Burlingame](#)  
(Broadway &  
Millbrae)

California Dr.  
(between Grove  
Ave. & Mills Ave.)

Residential &  
Commercia



Burlingame Parking Track (Broadway)

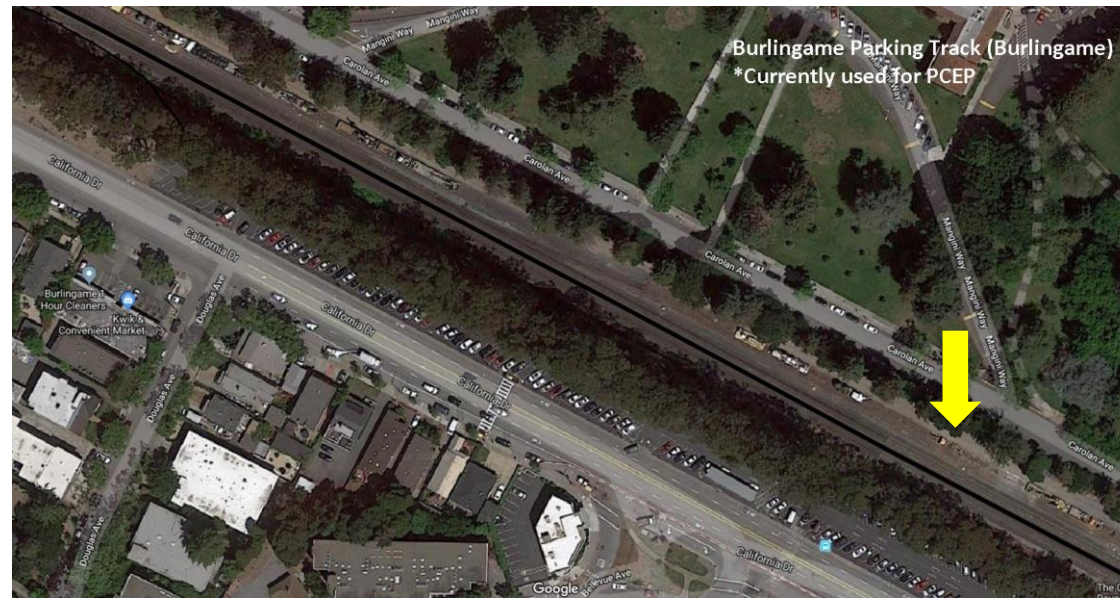


Burlingame Parking Track (Broadway)

Burlingame  
(Burlingame)

Carolan Ave.  
(between Oak  
Grove Ave. &  
North Ln.)

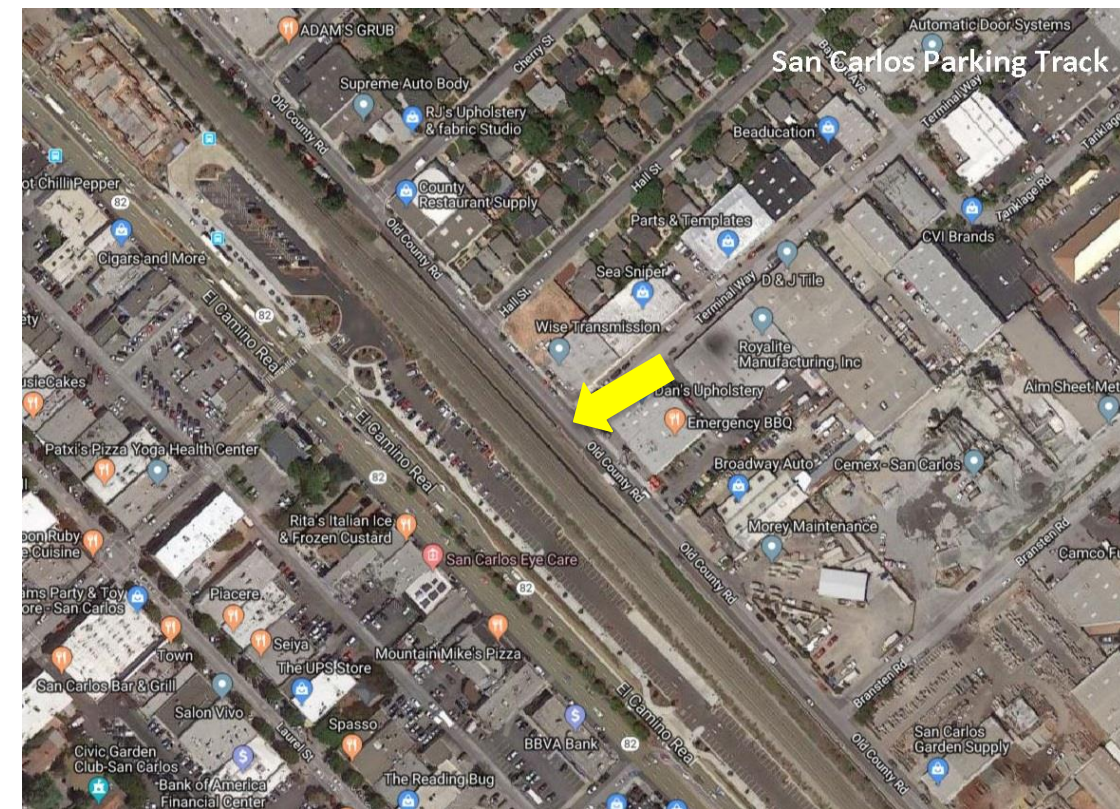
School



San Carlos

Old County Rd. &  
Terminal Way

Commercial &  
Residential



[Menlo Park](#)

Alma St.  
(Willow Rd. & Palo Alto Ave.)

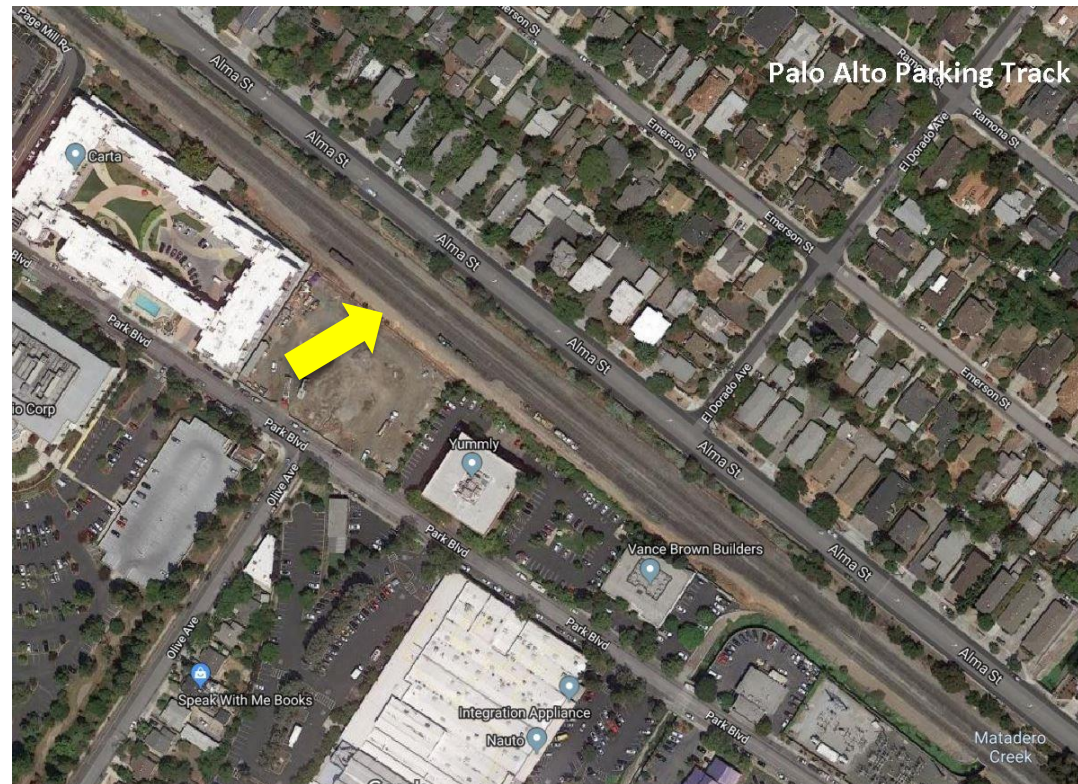
Hotel/  
Commercial &  
Residential



[Palo Alto](#)

Alma St. & El Dorado Ave.

Commercial &  
Residential



[Mt. View](#)

Central Expressway (Beatrice St. & Granada Dr.)

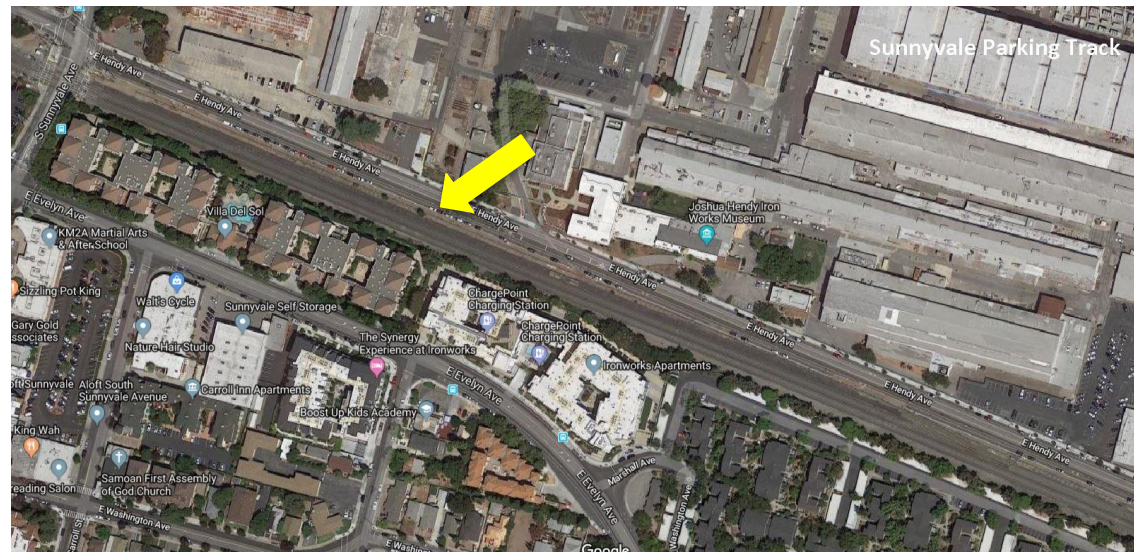
Residential & Expressway



[Sunnyvale](#)

E. Hendy Ave. (N. Sunnyvale Ave. & Fair Oaks Ave.)

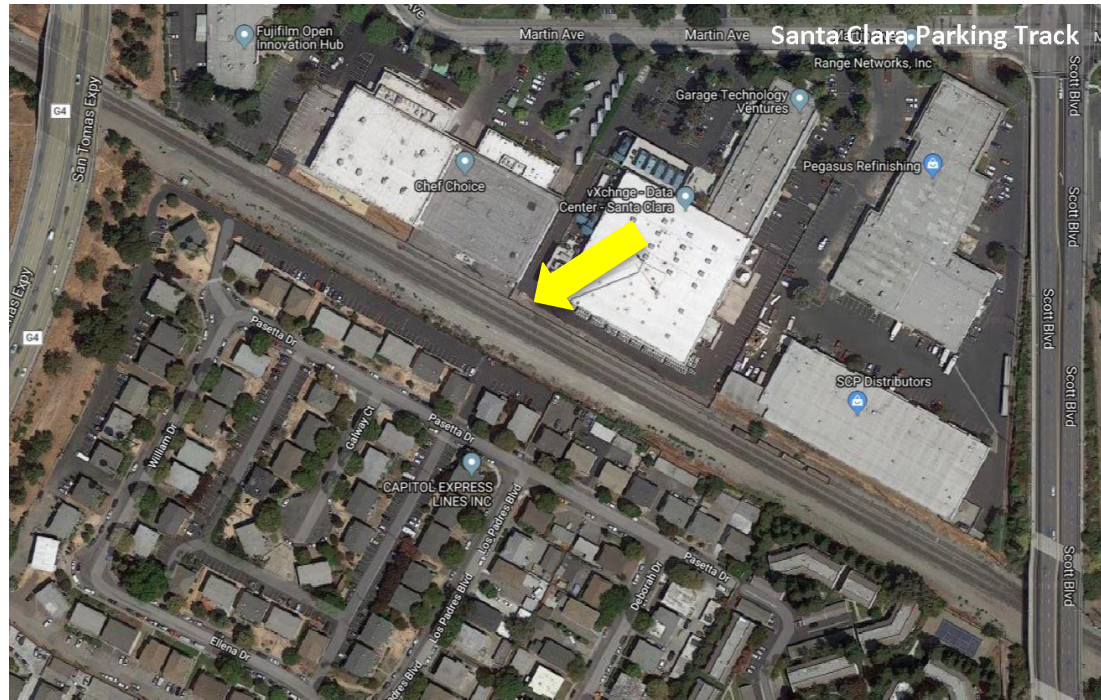
Residential & Commercial



[Santa Clara](#)

Scott Blvd. & San Thomas Expressway

Residential & Commercial

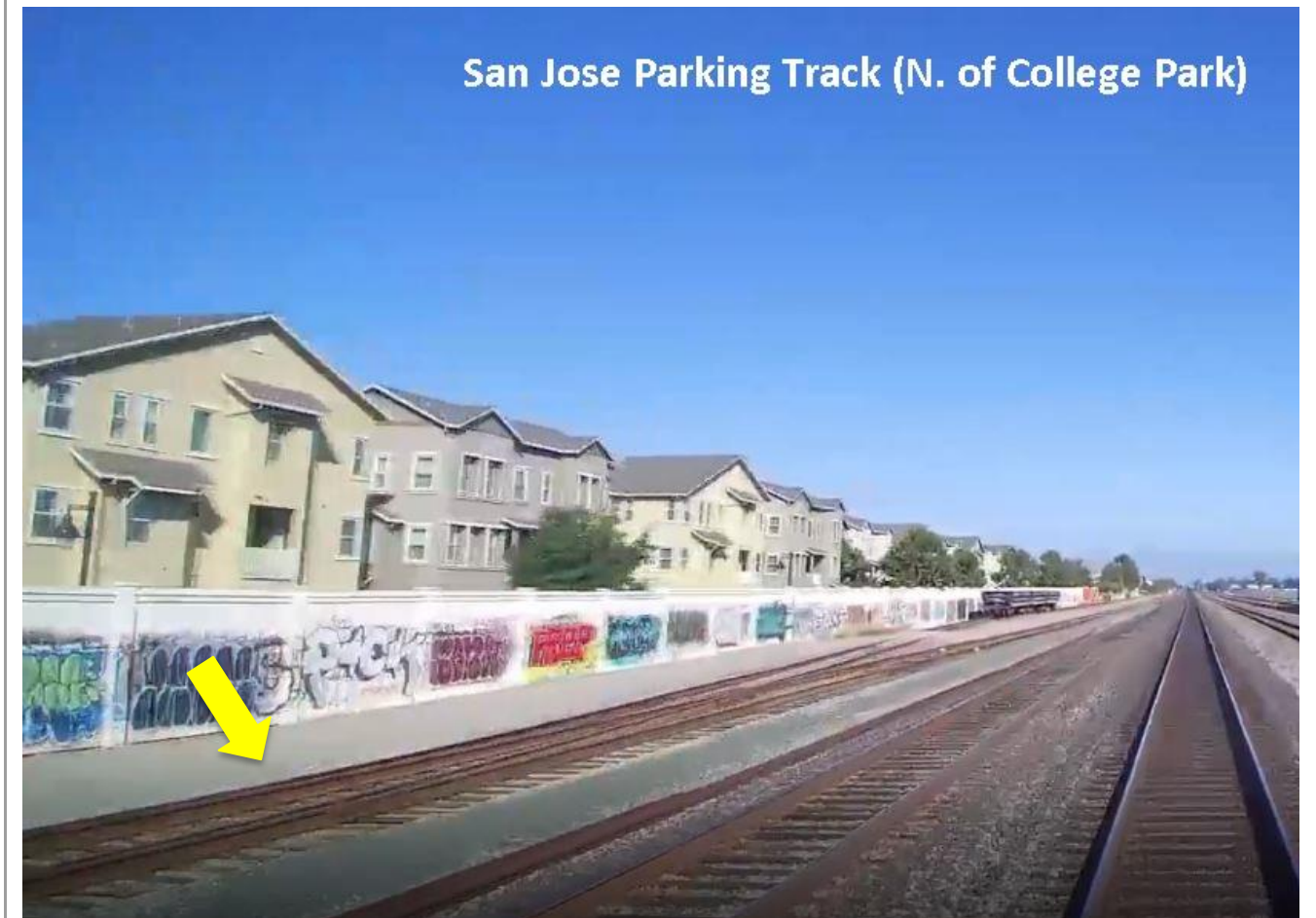


[San Jose](#)

(N. of College Park)

Dahlia Loop & Newhall Street

Residential & Commercial





[San Jose](#)  
(S. of Tamien)

Esfahan Ct. &  
Ferrara Cir.

Residential

