

AMP Briefing

SF Railyards Preliminary Business Case

NOVEMBER 29, 2023



Agenda



Recap of Previous Board Briefings



Operating Requirements at SF Railyards



Schedule of Future Briefings



Recap of Previous Board Briefings

Previous and Future JPB Presentations



2021

Presentation and received JPB approval to advance the MOU between Prologis and Caltrain to fund the Preliminary Business Case



2023

May: Update on the Technical Analysis of the Preliminary Business Case (PBC)

Aug: Overview of all San Francisco rail projects

Today: Caltrain's core operating requirements and upcoming decisions



2022

Executive Director's Staff Report Update



2024

Anticipated PBC Completion (Staff Recommendation)

Overview of SF Rail Projects



Overview of SF Rail Projects

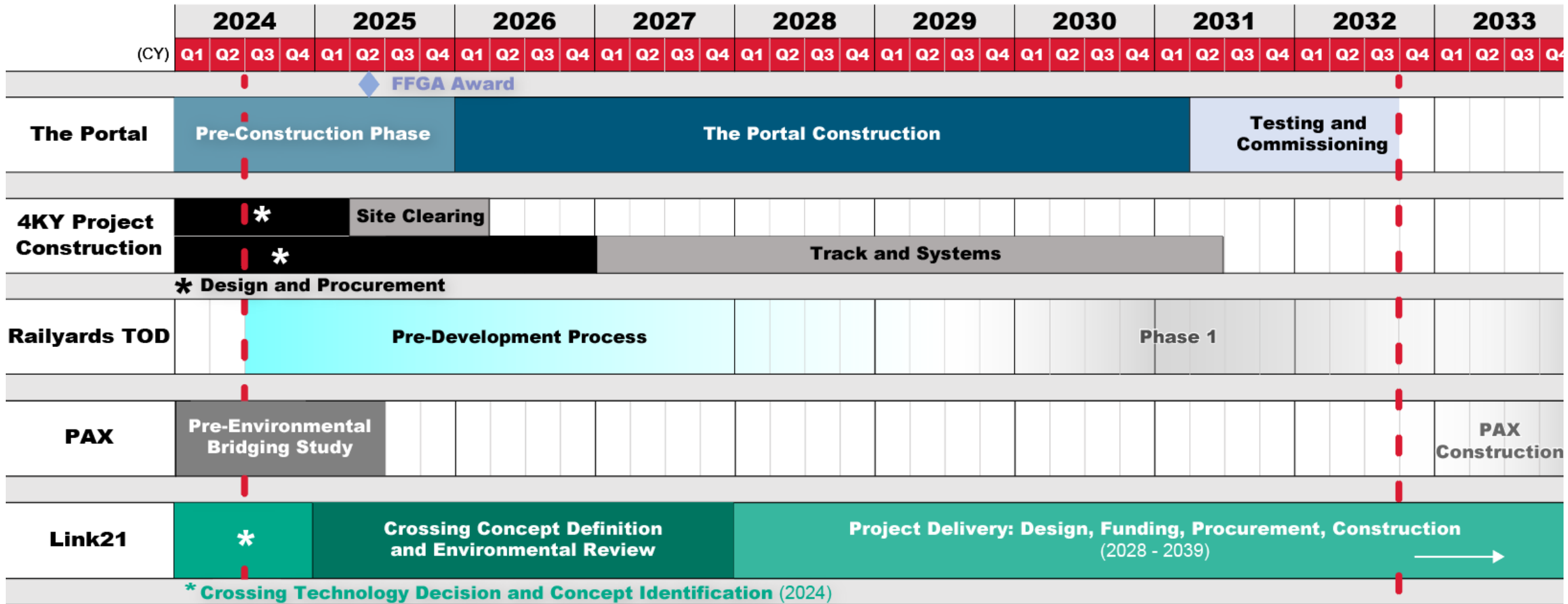


**4th and King
Yard Improvements**



**SF Railyards
Preliminary Business Case**





Caltrain Electrified Revenue Service



Caltrain Revenue Service Through The Portal



HSR Revenue Service



Potential Link21 Revenue Service (2040 estimate)

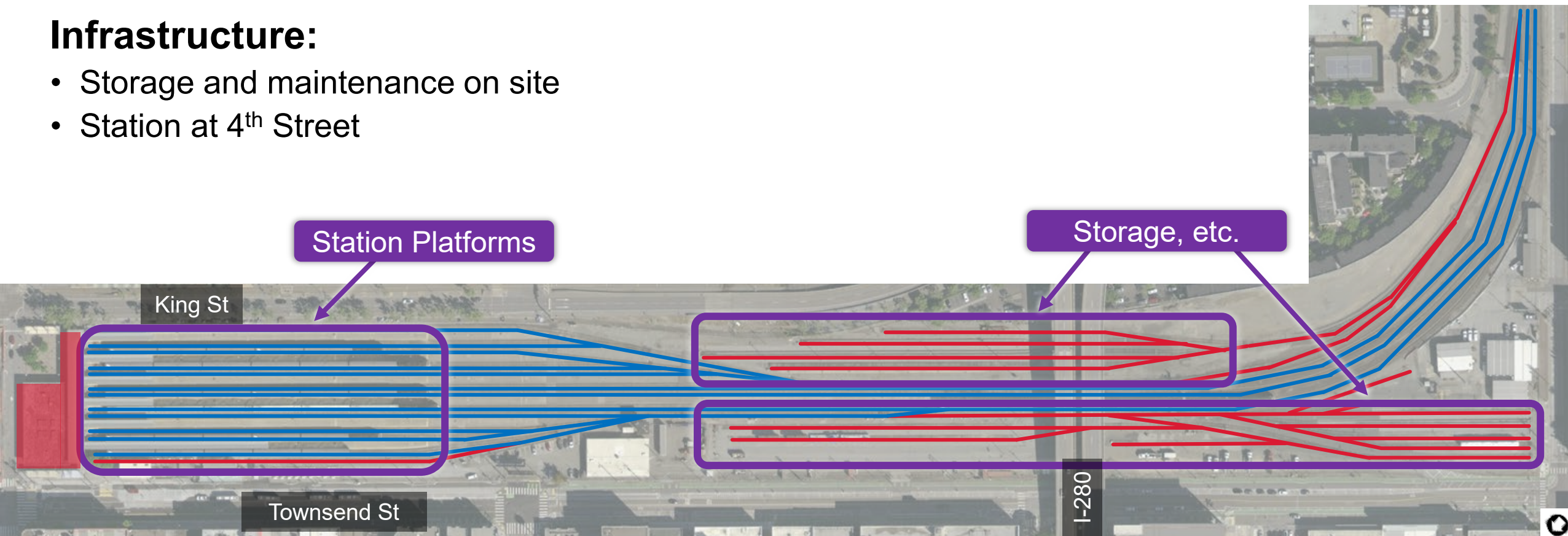


SF Railyards – Caltrain's Operating Requirements

Existing Conditions (All Above Ground)

Infrastructure:

- Storage and maintenance on site
- Station at 4th Street

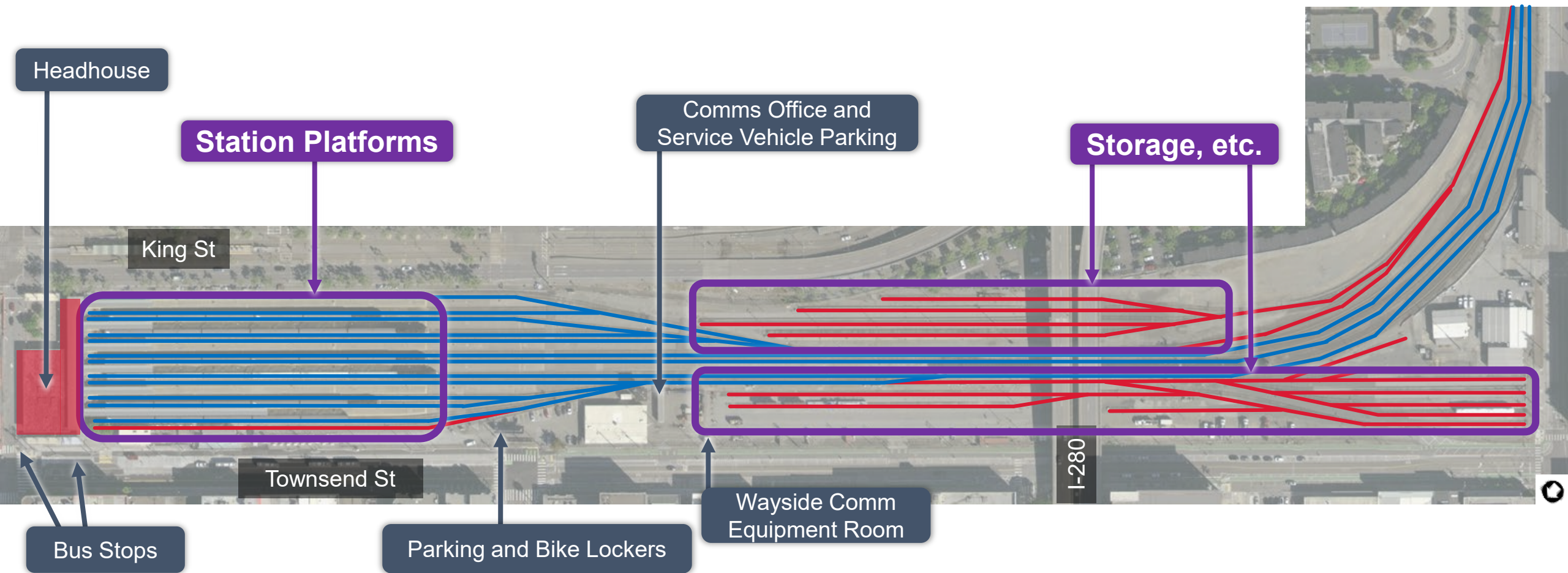


Legend

- Revenue Track
- Yard Track (Storage, etc.)



On-site Functions



Legend

- Revenue Track
- Yard Track (Storage, etc.)



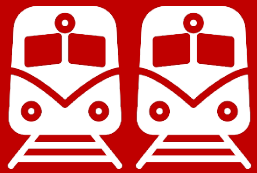
Core Functions in the North End



Passenger Facilities



Customer Experience



Space to Store Trains

- Trains must be stored overnight in the North End



Space to Service Trains

- Trains require light daily maintenance



Space to Turn Trains

- Trains require platforms that are 875' long, turning trains requires ample platform space and time



Space to Start Trains

- Trains must start in the North End to run a balanced service

The Adopted Service Vision

Derived from Caltrain's Business Plan

“Caltrain’s Long Range Service Vision directs the railroad to plan for substantially expanded rail service that, by 2040, will address the local and regional mobility needs of the corridor while supporting local economic development activities.”



Caltrain's Policy Priorities for the SF Railyards



Meet the Caltrain Adopted Service Vision – Adopted by the Caltrain Board



Maximize economic development opportunity



Support advancement of existing/planned projects: Electrification, Downtown Extension (DTX), CA High Speed Rail (HSR) (*construction sequencing considerations*)



Maintain station point-of-arrival at/or near 4th Street



Ensure infrastructure supports Caltrain's current and future rail operations and maintenance needs



Providing exceptional customer service and passenger experience

Alternatives Development Process

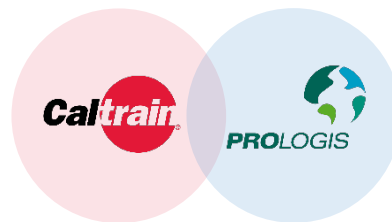
All concepts must:



Meet Caltrain's operational needs



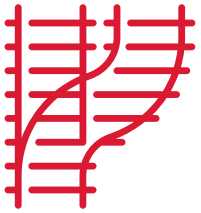
Prologis inputs for **feasible** mixed-use development



Future Briefings

Schedule of Briefings and Milestones

2024 Q1-Q2



Rail Infrastructure & Operations



Station Infrastructure & Customer Experience



Entitlement Preparations

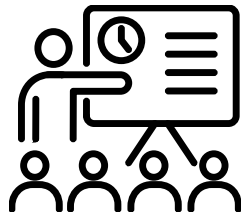


Real Estate & Finance

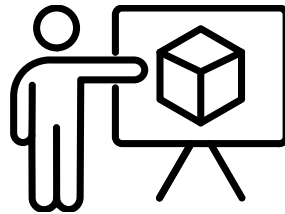


Governance and Schedule

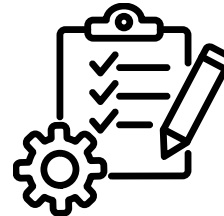
Prologis Pre-Entitlement Process



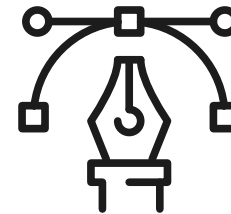
Public Workshops



Concept Visioning



Site Planning



Design

Questions and Discussion

FOR MORE INFORMATION

WWW.CALTRAIN.COM

