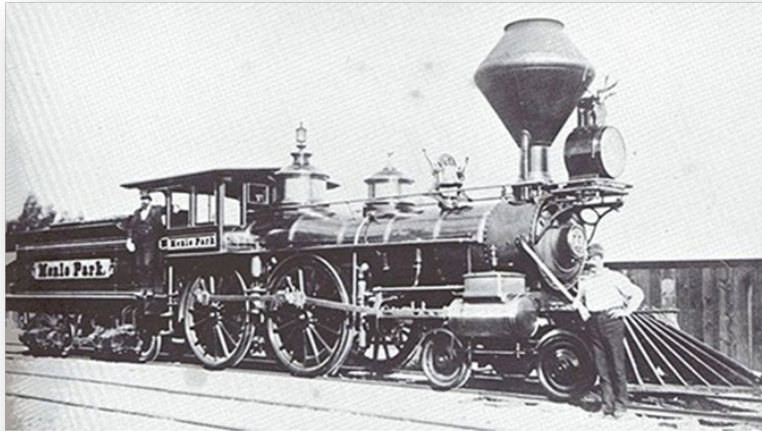


# Caltrain Electrification Update

BATAC  
January 18, 2024

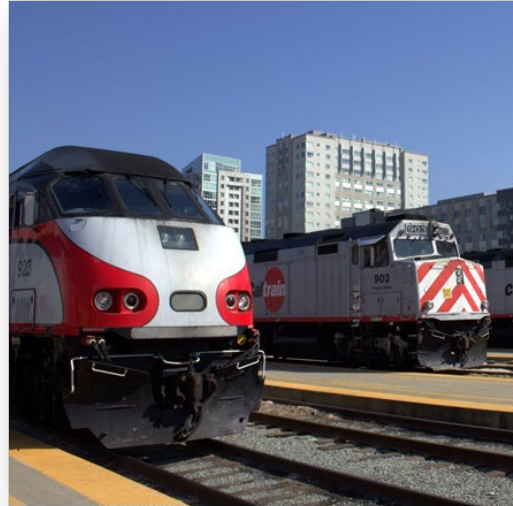


# January 16, 2024: Caltrain 160 Years Old



Locomotive - Locomotive #11 of the San Francisco and San Jose Railroad. Circa 1870.

Steam 1864



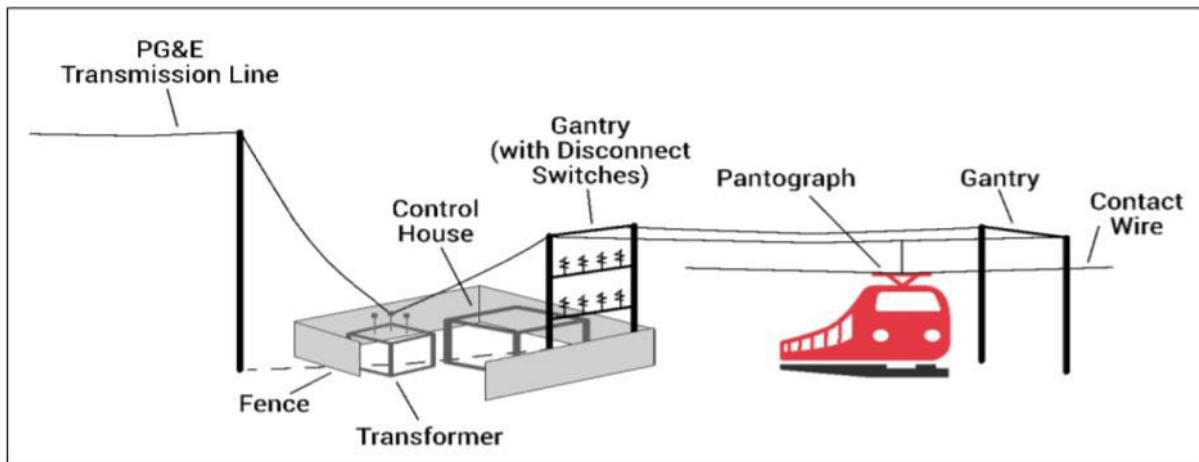
Diesel 1950



Electric 2024

# Project Overview

- San Francisco to San Jose, 51 miles
- 25kV Overhead Contact System (foundations, poles, wires)
- 23 electric trainsets (7 cars each)
- 10 Traction Power Facilities





# Key Milestones

## Infrastructure

- **Foundations:** Complete - 3,092 foundations complete (January 2022)
- **Poles:** Complete - 2,568 poles installed (August 2023)
- **All Overhead Wire :** Complete 2.5 million feet (November 2023)
- **Energized Test Segment:** Mountain View to San Jose (June 2023)
- **Full Corridor Energization:** San Francisco to San Jose (March 2024)

## Electric Trains

- **6 Trainsets on Property:** Arrived March 2022; September 2022, October 2023
- **Additional Trainsets:** Scheduled to arrive February 2024 through Fall 2024
- **1,000 Mile Tests:** First three trainsets passed 1,000 miles of testing

**Revenue Service: September 2024**



# Electrified Service Plan Benefits

Improved service for all riders



## Get There Faster

Express from SF to SJ in under an hour

Quicker local service, 75 minutes instead of 100

Save up to 28 minutes on trips from Southern Santa Clara County to SF



## Ride More, Wait Less

20% more train service

26% more train service at equity priority stations

Half-hourly service during weekends and off-peak



## First Class for Everyone

Free Wi-Fi

Smoother, quieter experience

Outlets at every seat

Digital trip information onboard

Spacious, accessible bathrooms



## Clean and Green

GHG emissions reduced by 250K MTCO2 annually – equivalent to taking 55,000 cars off the road each year

Improves local air quality

Quieter trains, both onboard and off

# Weekend Shutdowns

- Regular weekend service in January and February 2024
- Additional weekend shutdowns planned Spring 2024

Area (Phase)	Work Activity	Weekends	Number of Weekends
San Francisco to Millbrae (Phase 1)	OCS Construction	February 11-12 February 25-26 March 4-5 March 11-12	4
Millbrae to Hillsdale (Phase 2)	OCS Construction	March 25-26 April 1-2	2
Belmont to Menlo Park (Phase 3)	OCS Construction	April 8-9 April 15-16	2
Menlo Park to Santa Clara (Phase 4)	Signal Installation OCS Testing System Integration Testing	April 22-23 April 29-30 May 5-6 May 13-14	4
San Francisco to Millbrae (Phase 5)	OCS Construction Signal Installation	June 10-11 June 17-18	2
Hillsdale to Palo Alto (Phase 6)	OCS Construction	July 15-16 July 22-23	2
San Francisco to Millbrae (Phase 7)	Signal Installation	August 12-13 August 19-20 August 26-27	2
San Francisco to Millbrae (Phase 8)	OCS Testing	October 7-8 October 14-15	2
Millbrae to Menlo Park (Phase 9)	OCS Testing	October 21-22	2



# Electric Train San Jose Diridon Public Tour (4,200+ Attendees)

July 29, 2023





# Electric Train San Francisco Public Tour (4,000+ Attendees)

September 23, 2023



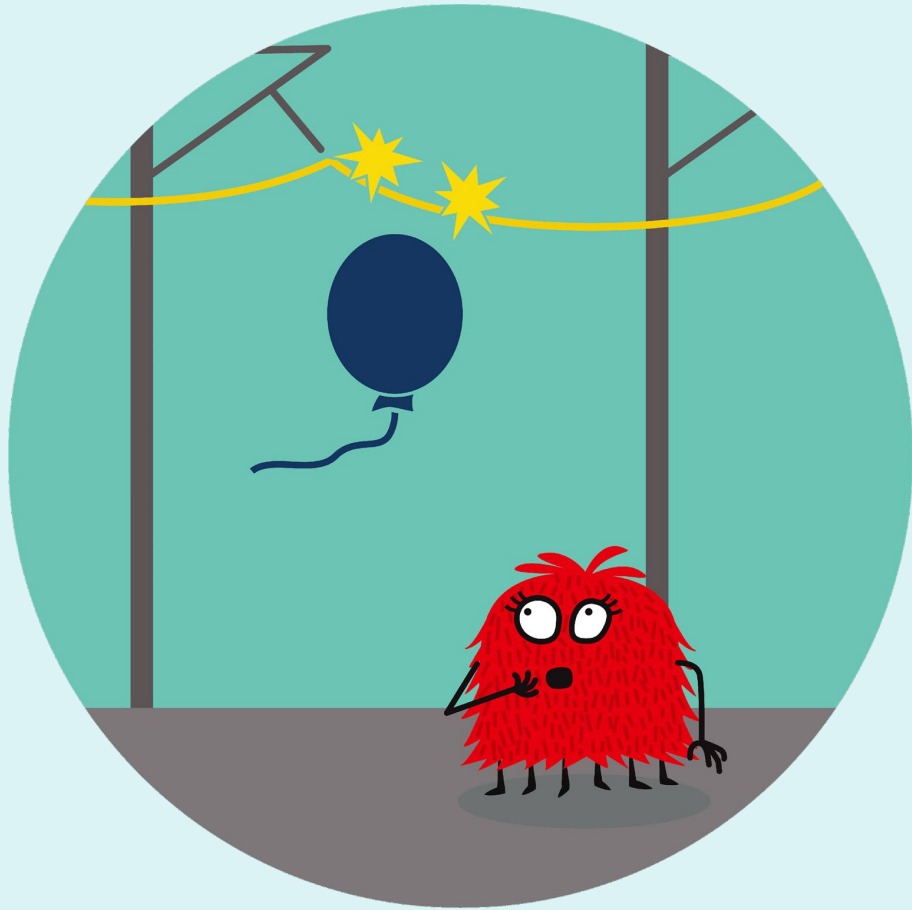


# Be aware of overhead wires



**Caltrain's electric overhead wires carry 25,000 volts of electricity and can be dangerous. Treat all overhead wires with respect.**

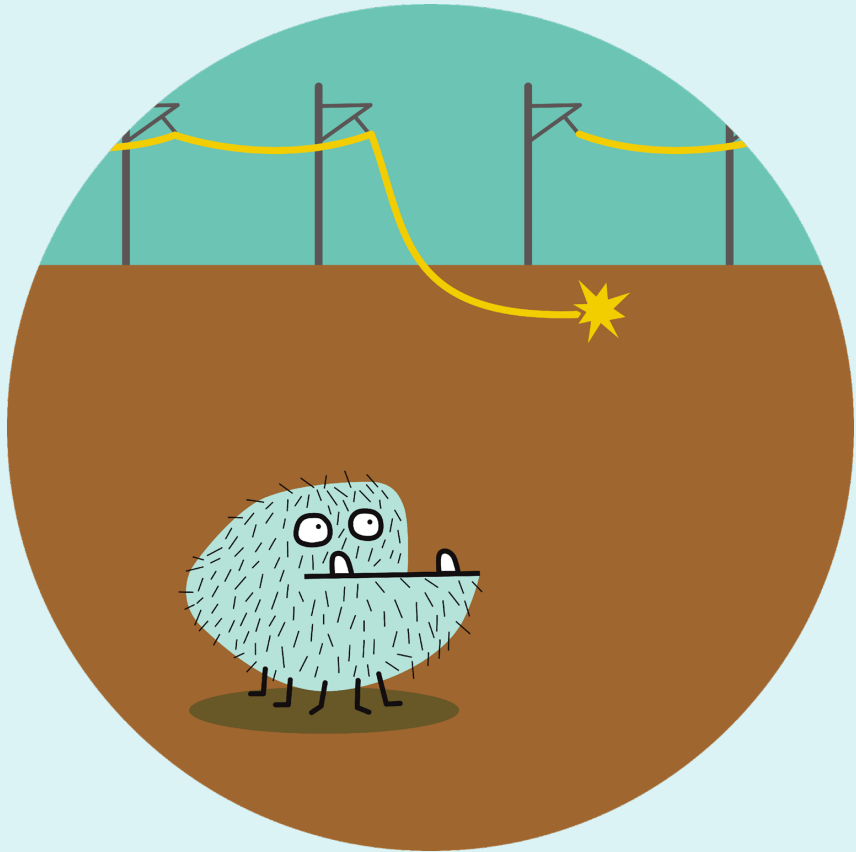
# Keep yourself and objects away



**Never approach  
overhead wires with  
things like ladders,  
antennas, balloons,  
and most importantly,  
yourself!**



# Stay away from and report damaged wires



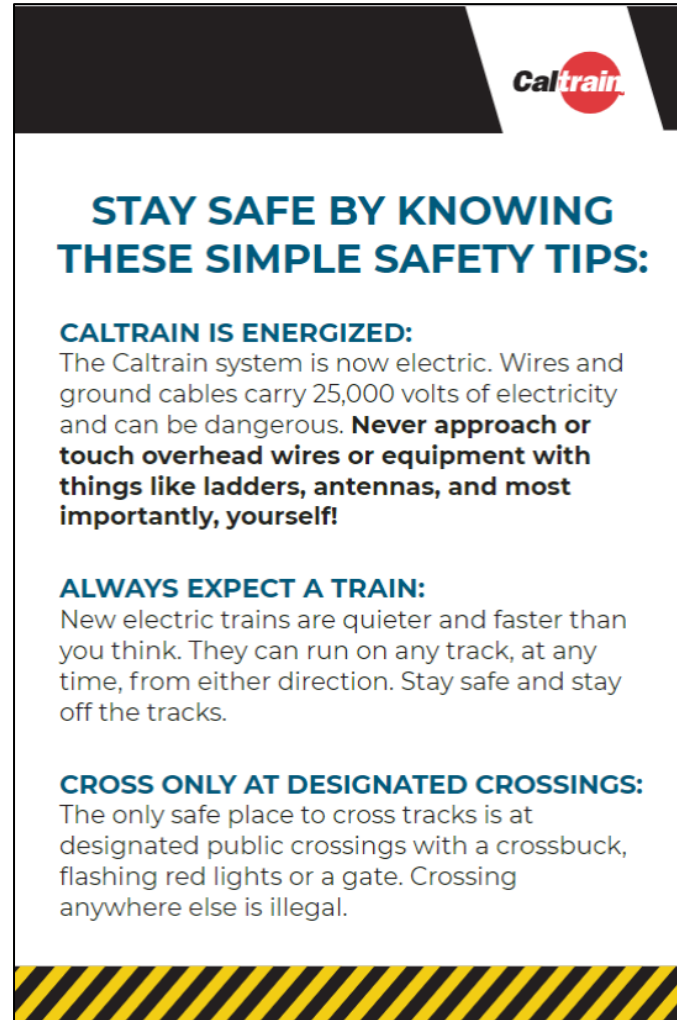
**If you see a downed or otherwise damaged overhead wire, stay at least 25 feet away.**

**For emergencies or suspicious activity on Caltrain, call the Transit Police at 1.877.SAF-RAIL (1.877.723.7245).**

# Public Outreach Safety Campaign

- Community Meetings
- Residential Mailers
- Onboard Outreach
- School Campaign
- Public Service Announcements
- Right-of-way outreach
- Bike Rodeos

**Safety Video at**  
**[caltrain.com/safety](http://caltrain.com/safety)**



The flyer features a black and white diagonal hazard stripe border at the top and bottom. The Caltrain logo is in the top right corner. The main text is in blue and black, providing safety instructions for crossing tracks.

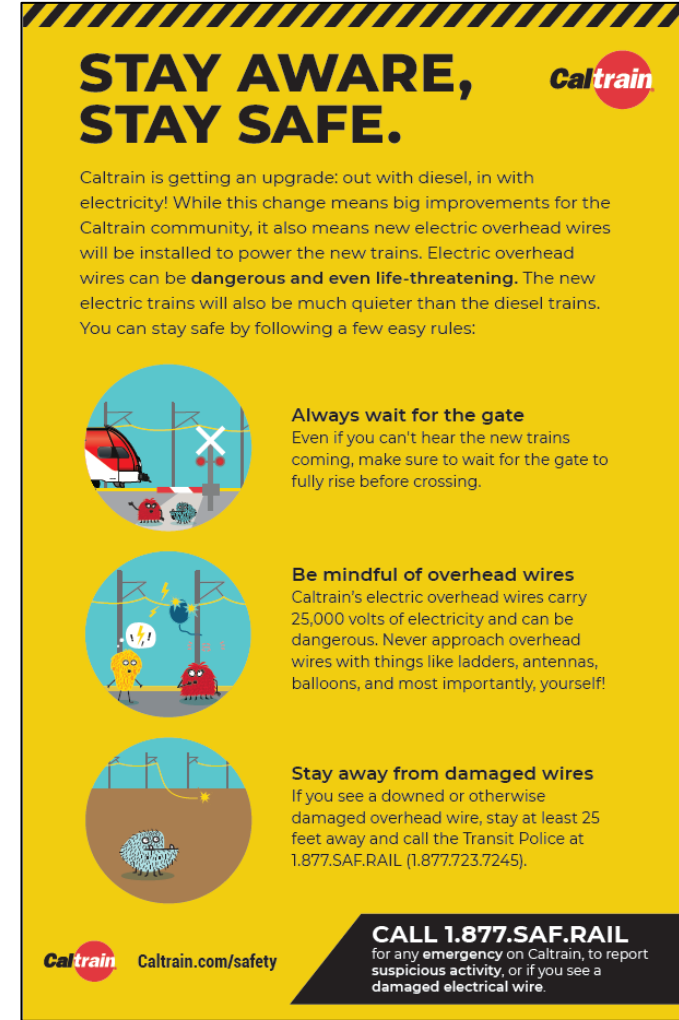
**STAY SAFE BY KNOWING THESE SIMPLE SAFETY TIPS:**

**CALTRAIN IS ENERGIZED:**  
The Caltrain system is now electric. Wires and ground cables carry 25,000 volts of electricity and can be dangerous. **Never approach or touch overhead wires or equipment with things like ladders, antennas, and most importantly, yourself!**

**ALWAYS EXPECT A TRAIN:**  
New electric trains are quieter and faster than you think. They can run on any track, at any time, from either direction. Stay safe and stay off the tracks.

**CROSS ONLY AT DESIGNATED CROSSINGS:**  
The only safe place to cross tracks is at designated public crossings with a crossbuck, flashing red lights or a gate. Crossing anywhere else is illegal.

Right-of-Way Flyer



The mailer has a yellow background with a black and white diagonal hazard stripe border at the top. The Caltrain logo is in the top right corner. The text is in black, and there are three circular illustrations showing safety scenarios.

**STAY AWARE, STAY SAFE.**

Caltrain is getting an upgrade: out with diesel, in with electricity! While this change means big improvements for the Caltrain community, it also means new electric overhead wires will be installed to power the new trains. Electric overhead wires can be **dangerous and even life-threatening**. The new electric trains will also be much quieter than the diesel trains. You can stay safe by following a few easy rules:

**Always wait for the gate**  
Even if you can't hear the new trains coming, make sure to wait for the gate to fully rise before crossing.

**Be mindful of overhead wires**  
Caltrain's electric overhead wires carry 25,000 volts of electricity and can be dangerous. Never approach overhead wires with things like ladders, antennas, balloons, and most importantly, yourself!

**Stay away from damaged wires**  
If you see a downed or otherwise damaged overhead wire, stay at least 25 feet away and call the Transit Police at 1.877.SAF.RAIL (1.877.723.7245).

**CALL 1.877.SAF.RAIL**  
for any emergency on Caltrain, to report suspicious activity, or if you see a damaged electrical wire.

Residential Mailer





# Questions