

CALTRAIN SAFETY PERFORMANCE DASHBOARD

JANUARY 24, 2024
TOPS COMMITTEE



Overview

- Safety – First and Always is Caltrain's #1 Core Value
- The Strength of our Safety Culture and Safety Program Performance must be measurable and data driven
- Key Performance Indicators (KPI's), both lagging and leading, are included in the Safety Performance dashboards
- Additional information will be presented based upon risk and focus

Safety Culture

- Created **Safety – First and Always** as our primary core value
- Safety Moments at all Caltrain meetings and briefings
- New Safety Champions
Focus Areas: Training – Reporting – Communication – Recognition
- Safety Concern Reporting tools, risk register created
- Organizational Risk-Based decision framework

New email signature:



	Severity			
Frequency of Occurrence	1 Catastrophic	2 Critical	3 Marginal	4 Negligible
(A) Frequent	1A	2A	3A	4A
(B) Probable	1B	2B	3B	4B
(C) Occasional	1C	2C	3C	4C
(D) Remote	1D	2D	3D	4D
(E) Improbable	1E	2E	3E	4E

Injuries

Days Without a Reportable Injury as of 1/9/2024		
<u>Department</u>	<u>Days Without Injury</u>	<u>Date of Last Injury</u>
OPS	67	11/3/2023
MOE	64	11/6/2023
MOW	36	12/4/2023
OTHER	1,322	5/27/2020

Month	Monthly Reported Injury Ratio	Cumulative Reported Injury Ratio (CY2023)
November	4.75	3.24

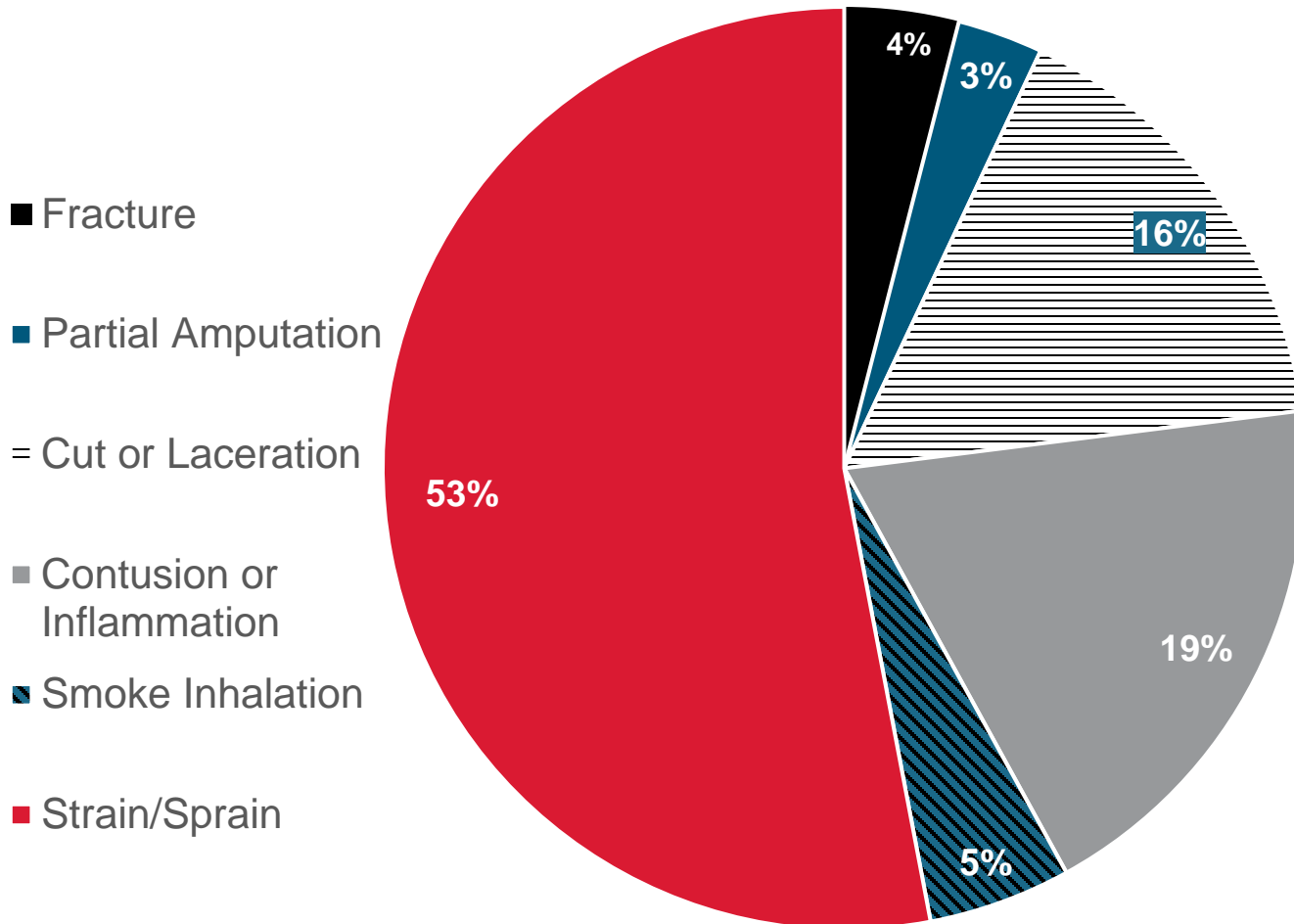
Monthly Injury Ratio is calculated by: $(\text{Monthly Man-Hours} / \text{\#Incidents}) / 200,000$

Cumulative Ratio YTD is Calculated by: $(\text{YTD Man-Hours} / \text{YTD \#Incidents}) / 200,000$

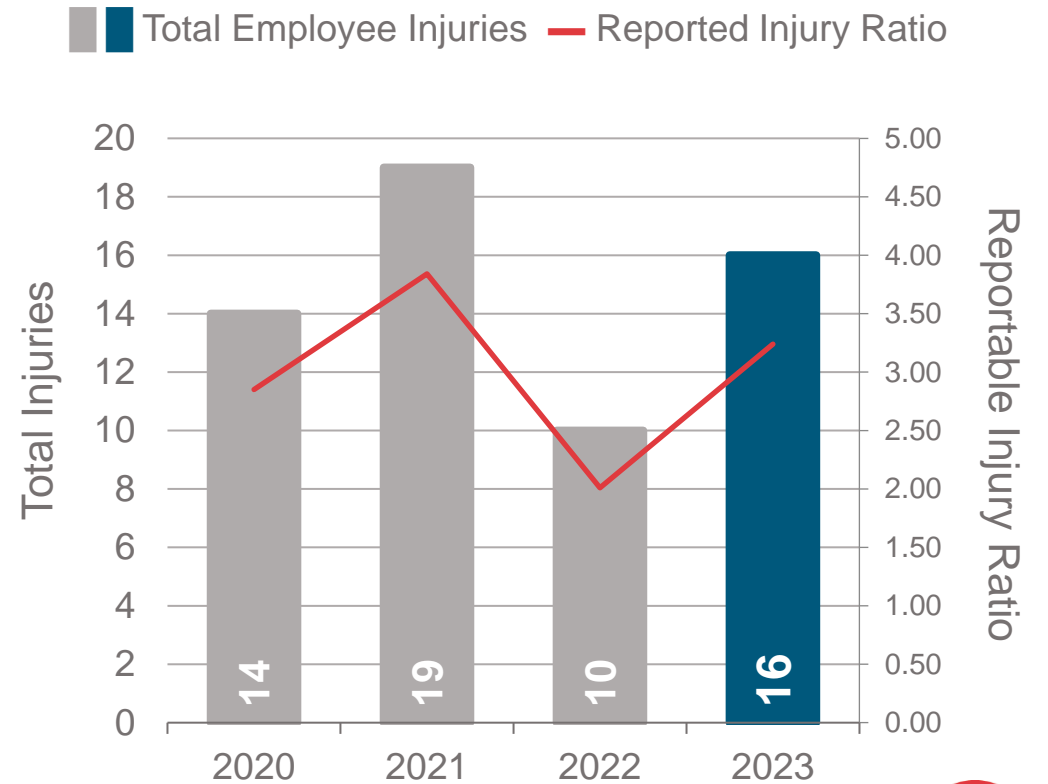


Reportable Injuries

Types of Injuries CY2020 - CY2023



Employee Injuries, Reportable Injury Rate by Year

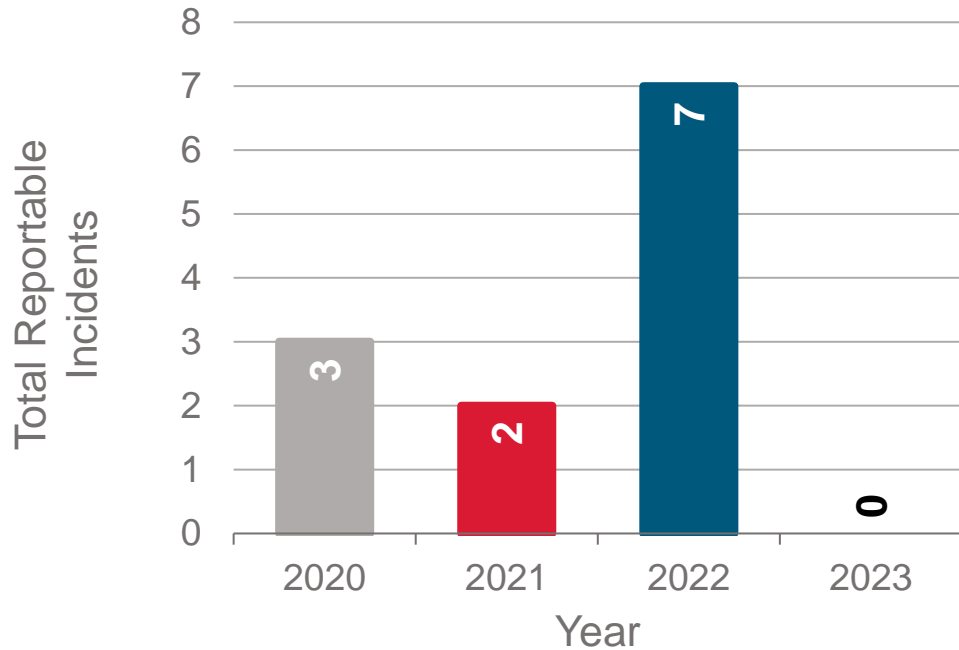


The national average RIR is 3.0 across all industries, per the U.S. Bureau of Labor Statistics.

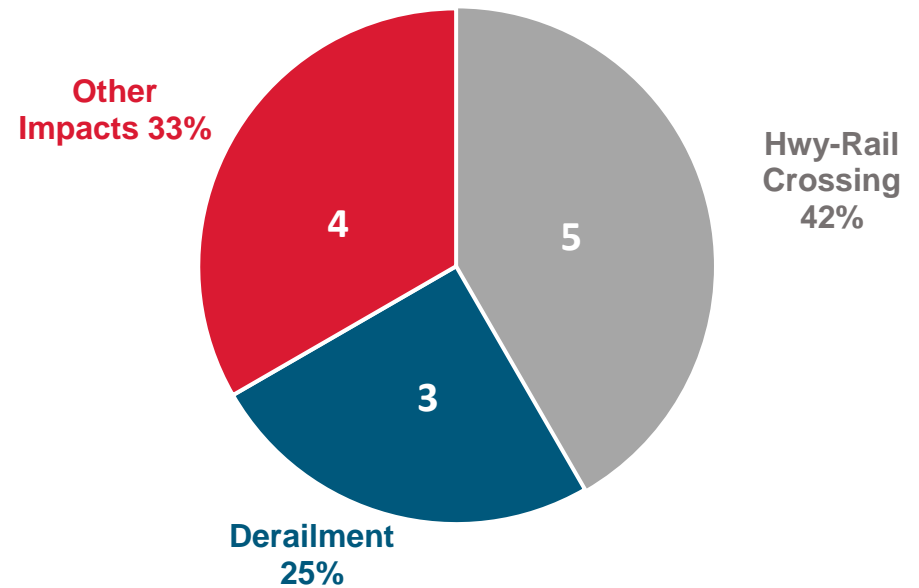


Accidents/Incidents

Reportable Rail Equipment Incidents YoY CY2020 – CY2023

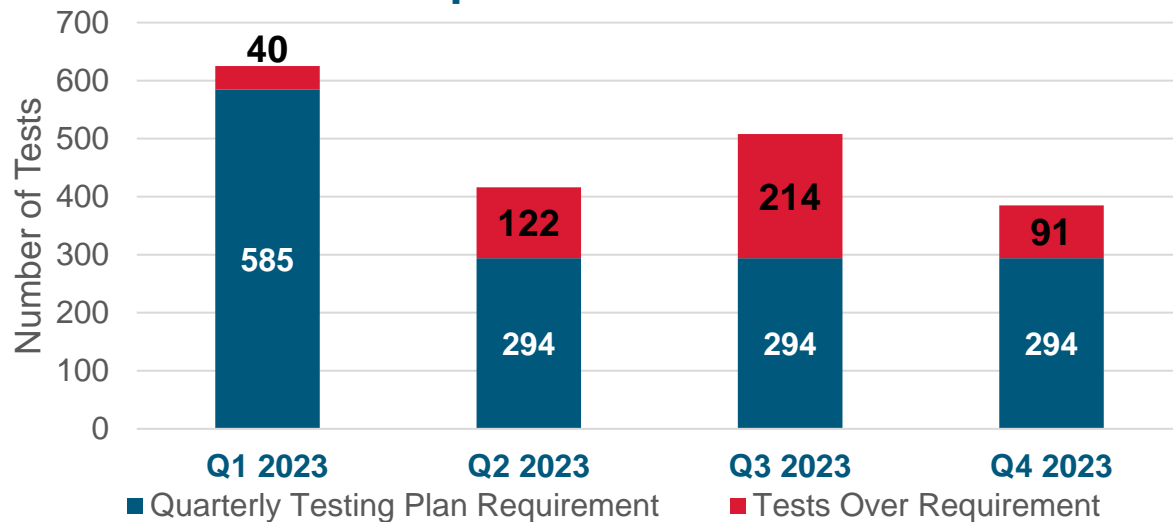


Reportable Rail Equipment Incidents CY2020 - CY2023

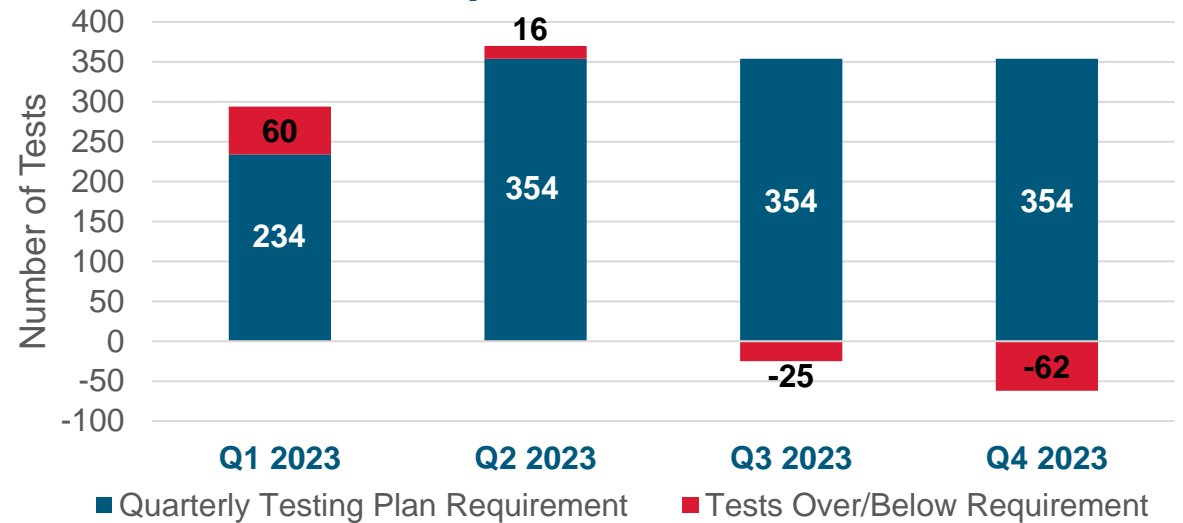


Efficiency Testing

Operations Core Program Tests Completed vs. Quota



MOE Core Program Tests Completed vs. Quota



Q1 Testing Requirements:

- Flags
- Trains/Engines/Cars Left Unattended
- Delayed in the Block
- Communication of Signals
- Passenger Car Door Operations
- Block Signal Drop
- Conductor Calling Restrictions to Engineer
- Protection of Track Car, Men, or Machines
- Alcohol and Drug Observations
- Conduct Proper Job Briefing
- Track Occupancy
- Tampering With Safety Equipment

Q2-Q4 Testing Requirements:

- Flags
- Trains/Engines/Cars Left Unattended
- Speed Requirements
- Delayed in the Block
- Communication of Signals
- Block Signal Drop
- Running Brake Test
- Conduct Proper Job Briefing

Q1 Testing Requirements:

- Blue Signal - MOE
- Lock out/Tag out - MOE
- Crossing Warning Devices

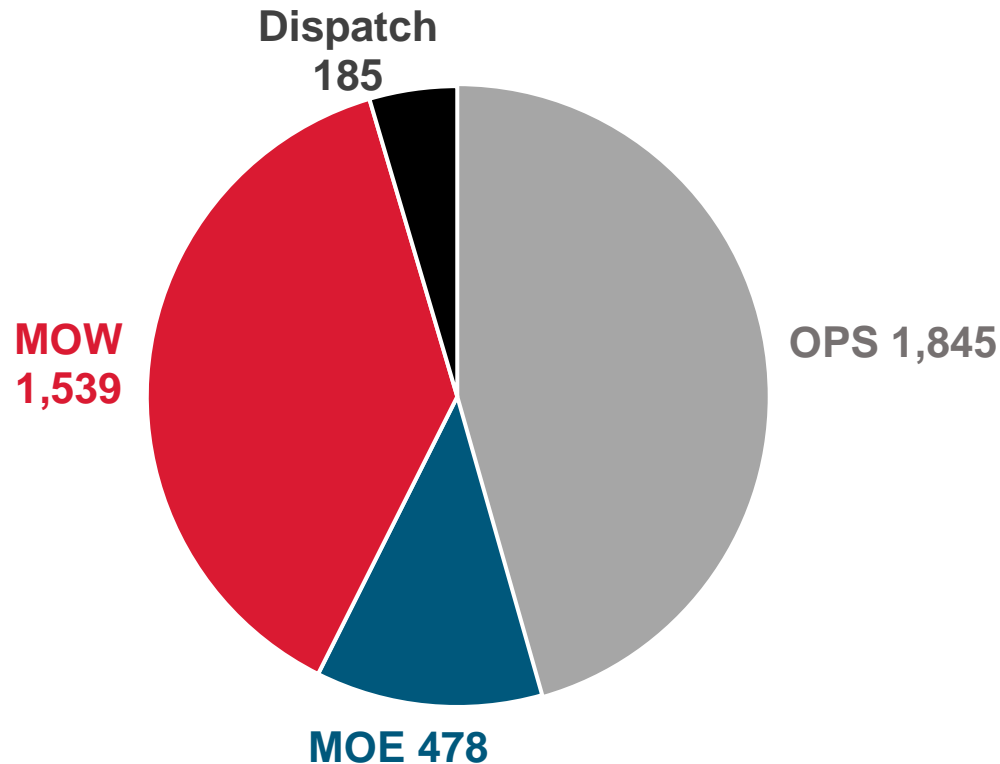
Q2-Q4 Testing Requirements:

- Separation During Travel and Work
- Multiple Work Groups Using Same Authority
- Protection of Track, Car, Men, or Machines
- Blue Signal MOE
- Crossing Warning Devices



Employee Engagements

Employee Engagement Across Safety Events 2023



Safety Week 2023

5-day event consisting of one engagement topic each day.

- Engagement
- Risk Identification
- Clarity
- We Over Me
- Pursuit of Excellent

Collectively TASI management engaged with **1,472** employees during Safety Week 2023 compared to 1,433 in 2022.

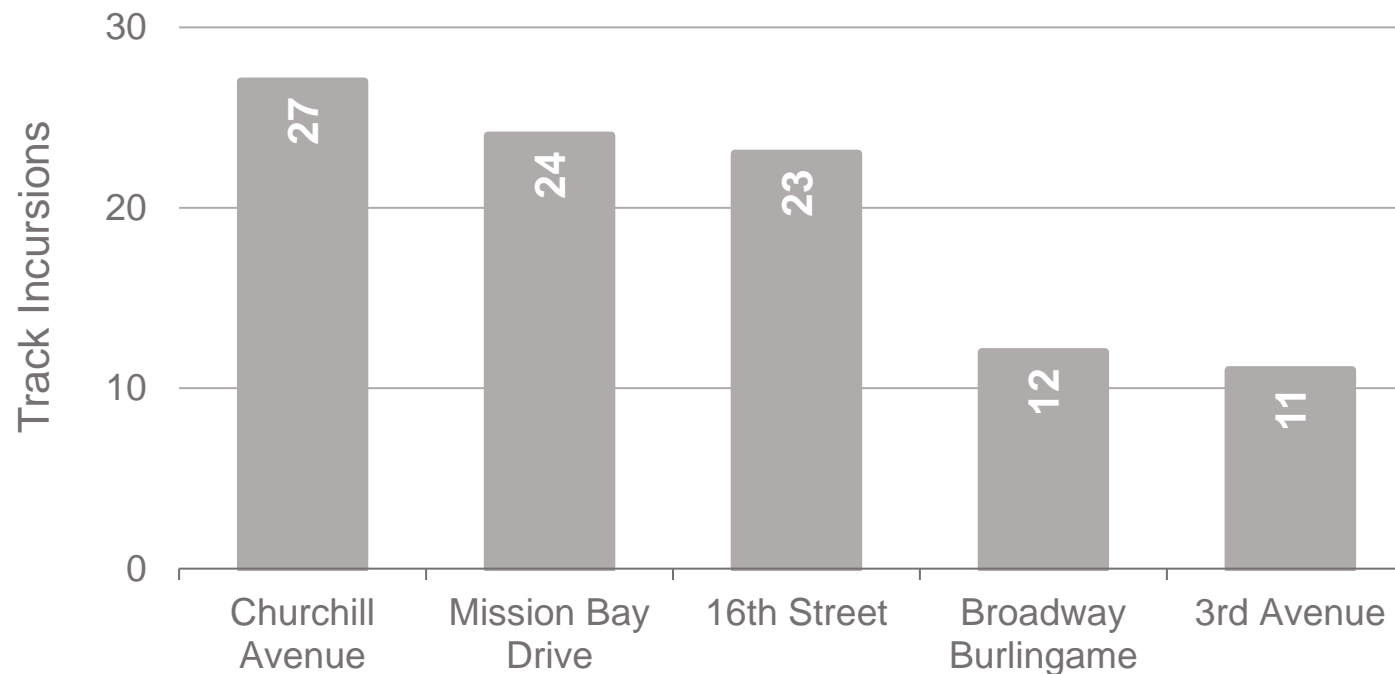
Summer Spike 2023

Collectively TASI management engaged with 1,714 employees throughout the duration of the event. In 2022 there were 1,866 total engagements during Summer Spike.

Vehicle Track Incursions

- There are currently 71 'at-grade' crossings along the Caltrain corridor
- Over half of the 183 vehicle track incursions since 2020 have occurred at 5 grade crossings
- The following slides highlight Caltrain's efforts to enhance safety at crossings

Vehicle Track Incursions by Crossing, CY2020 to Present

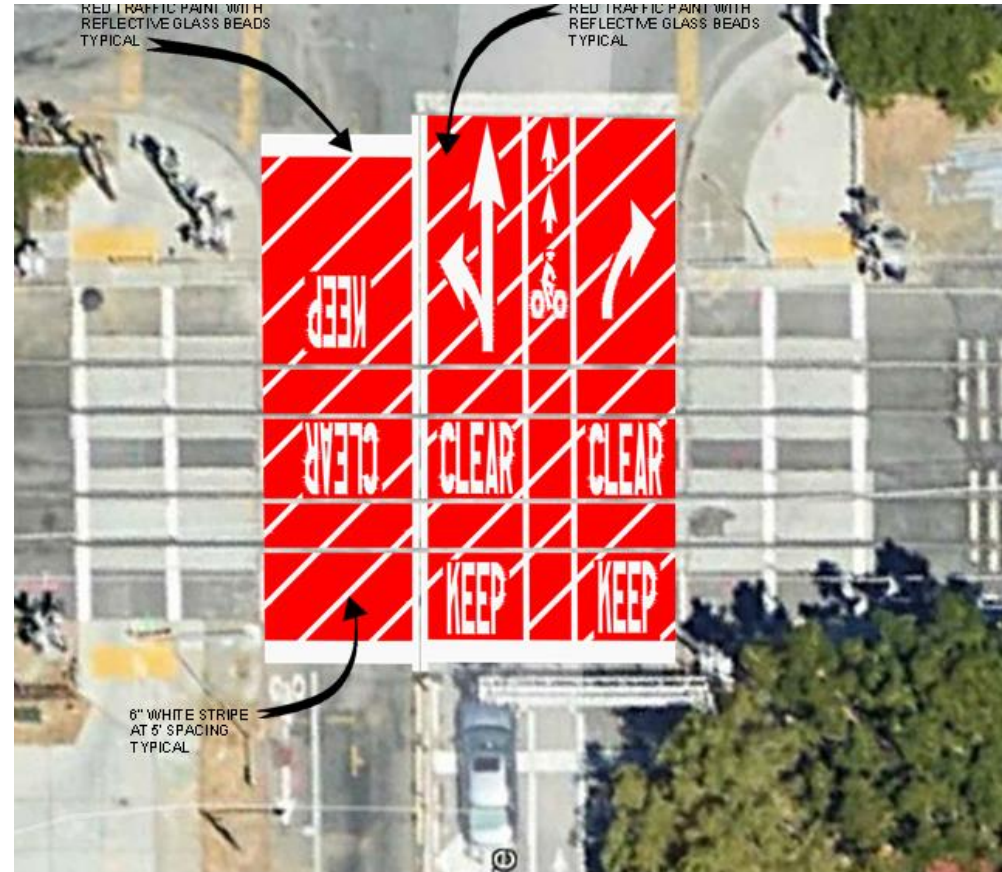


Grade Crossing Enhancements

- Pavement Markings
- Solar Lane Markers
- Delineators
- Signage
- Lighting
- Technology – CCTV, Intrusion, Alert Integration
- Scheduled improvements and separations

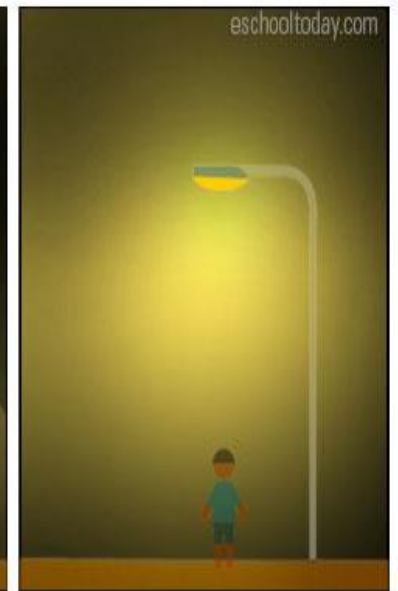
Grade Crossing Enhancements

Pavement Markings



Grade Crossing Enhancements

Markers, delineators, signage and lighting



Grade Crossing Enhancements

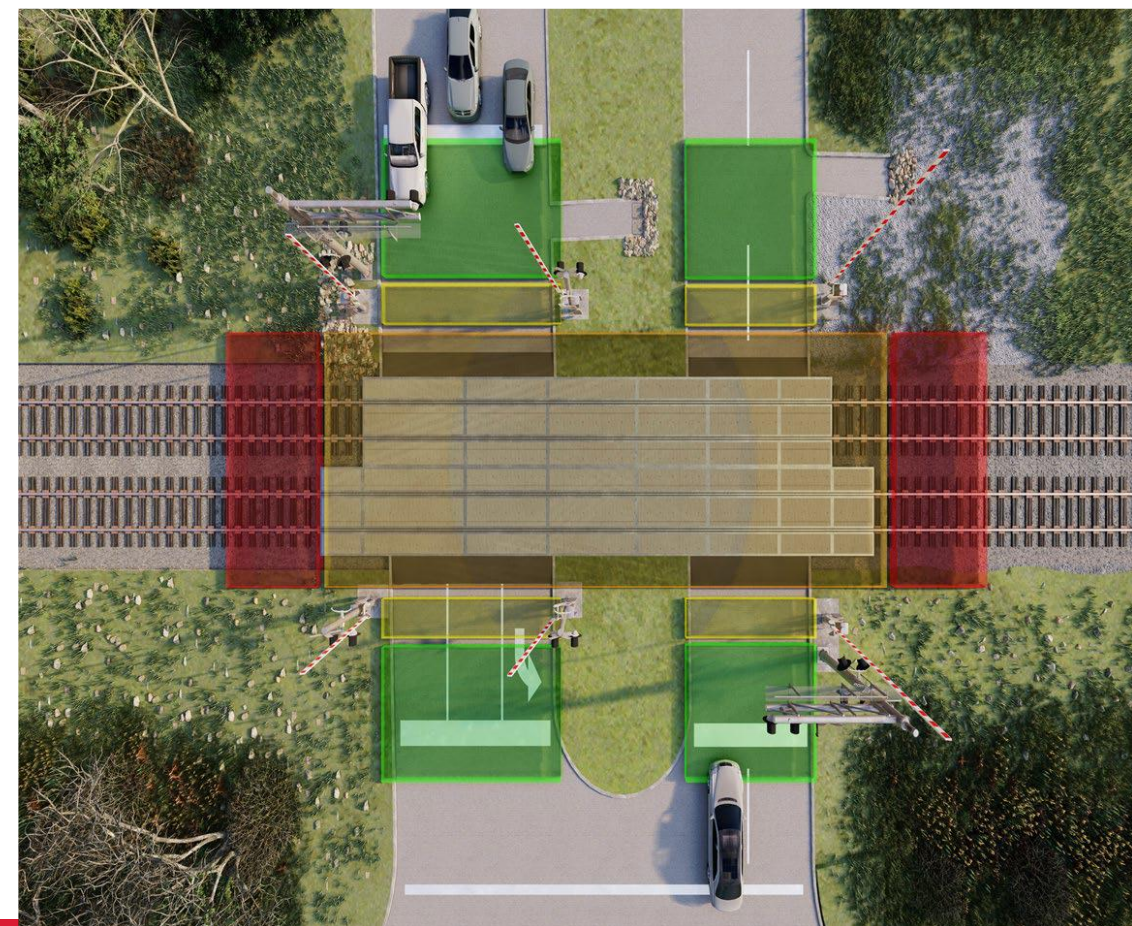
Pursuing Technology

- CCTV
- Video Analytics – proximity, license plate recognition, etc.
- Analysis and Alert
- Intrusion
- See something, say Something

Grade Crossing Enhancements

Technology - Intrusion

- Pilot Testing at high-risk crossings
- LIDAR
- CCTV
- Analysis and Alert
- Forensic
- Future Integration potential



Fencing and Barriers

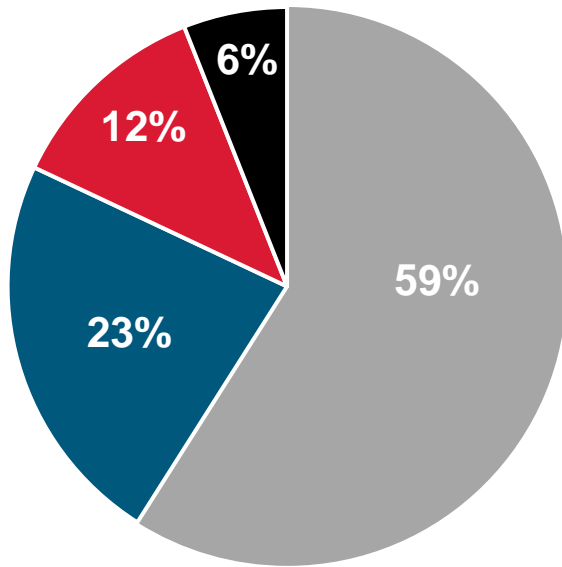
- Full alignment risk assessment beginning
 - Right of Way
 - Points of Entry
 - Tunnels
 - Stations, etc.
- PCEP and general fencing repairs continuing
- Multiple fence funding sources/projects

Partnering and Outreach

- City of Palo Alto
- City of Burlingame
- Transit Police
- Regional Trespasser/Suicide Awareness
- Operation Lifesaver
- GPS App Companies
- CPUC/FRA/FHWA Meetings
- APTA – Commuter Rail Safety Committees

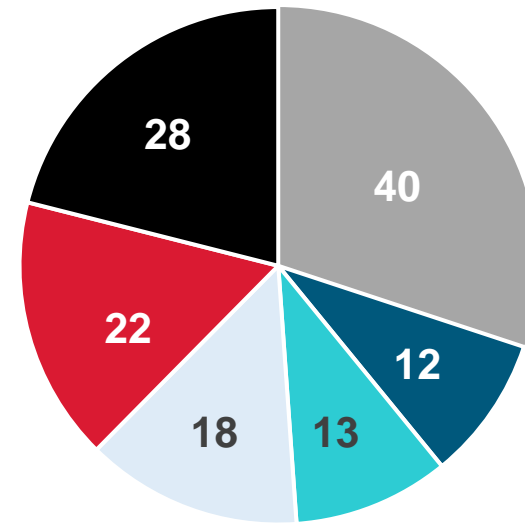
Transit Police Calls for Service

Calls for Service by County – December 2023



■ San Mateo ■ Santa Clara ■ San Francisco ■ Unknown

Call Volume by Issue Type – December 2023



■ Trespasser ■ Welfare Check ■ Disturbance
■ Signals ■ Medical Call ■ Dispersal



Safety Card

CALTRAIN IS NOW ELECTRIC!

The new electric train system can be *dangerous and even life-threatening*

See something unsafe?

Call 1.877.SAF.RAIL
(1.877.723.7245)

For any emergency on Caltrain, to report suspicious activity, or if you see a damaged electrical wire.

24/7 Suicide and Crisis Lifeline:

Call or Text 988

Social Services Hotline:

Call 211

caltrain.com/safety

Caltrain

Caltrain

STAY SAFE BY KNOWING THESE SIMPLE SAFETY TIPS:

CALTRAIN IS ENERGIZED:

The Caltrain system is now electric. Wires and ground cables carry 25,000 volts of electricity and can be dangerous. **Never approach or touch overhead wires or equipment with things like ladders, antennas, and most importantly, yourself!**

ALWAYS EXPECT A TRAIN:

New electric trains are quieter and faster than you think. They can run on any track, at any time, from either direction. Stay safe and stay off the tracks.

CROSS ONLY AT DESIGNATED CROSSINGS:

The only safe place to cross tracks is at designated public crossings with a crossbuck, flashing red lights or a gate. Crossing anywhere else is illegal.

Caltrain

See Something, Say Something

Do your part to keep the rails safe! **Call Transit Police at 1.877.SAF.RAIL (1.877.723.7245) immediately** to report any unsafe situation or suspicious activity, such as children playing near the tracks or people hanging out along the right of way.

Save the number in your cell phone for quick and easy access.

Caltrain
Safe



Questions/Comments?

FOR MORE INFORMATION

WWW.CALTRAIN.COM

