

CALTRAIN ELECTRIFICATION



ALMA STREET LANE CLOSURE NOTICE | February 2024

UPCOMING ACTIVITIES AND LANE CLOSURES

Between the period of February 20 to February 23, Caltrain will be performing trenching work in Palo Alto that will require partial lane closures of Alma Street near the Forest Avenue intersection to vehicle, bicycle and pedestrian traffic. The temporary lane closures are required due to trenching and construction equipment and crews entering and exiting the Caltrain right-of-way along Alma Street.

Work will take place February 20 through February 23 between 9 a.m. to 4 p.m. on Tuesday through Friday.

Directional signs and cones will direct vehicle traffic from the closed lanes to use open lanes along Alma and Forest during construction. **Only one direction will be closed at a time and access along these streets will be maintained.**

A lane closure map is provided at the end of this notice for vehicle, bicycle and pedestrian traffic.

CONSTRUCTION ACTIVITIES

During the closure, crews will be trenching along Alma for conduit installation. Work will consist of excavation, cutting of asphalt and concrete and excavation restoration. Construction activities require temporary lane closures to comply with safety regulations.

PROJECT OVERVIEW

Over the last decade, Caltrain has experienced a substantial increase in ridership and anticipates further increases in ridership demand as the Bay Area's population grows. Caltrain Electrification, scheduled to be operational by 2024, will electrify and upgrade the performance, operating efficiency, capacity, safety, and reliability of Caltrain's commuter rail service.

Caltrain electrification is a key component of the Caltrain Modernization Program and consists of replacing diesel-hauled with an electric train system for services between Fourth and King Street Station in San Francisco and the Tamien Station in San Jose. The project will include the installation of new electrical infrastructure and the purchase of electric trains.

CONTACT INFORMATION

Caltrain has established a project information line and project e-mail for Caltrain Electrification to record and respond to questions and comments from residents and stakeholders.


The project information line can be reached toll free at **800.660.4287**.

The project e-mail is calmod@caltrain.com

Sign up for weekly construction updates can be found online: www.caltrain.com/projects/electrification/get-involved



FOR MORE INFORMATION

 calmod.org

 Para traducción llama al 1.800.660.4287
如需翻譯,請電 1.800.660.4287
Cần dịch thuật, xin gọi 1.800.660.4287

CONTACT

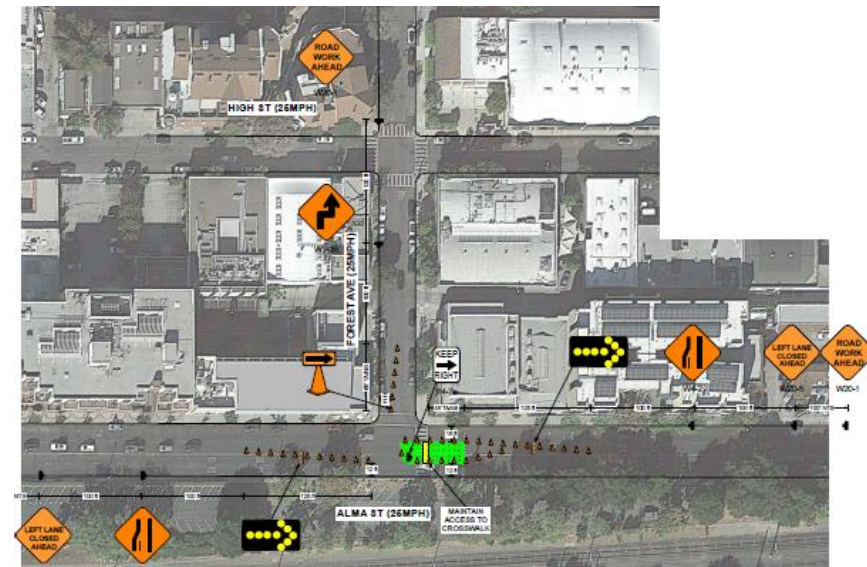
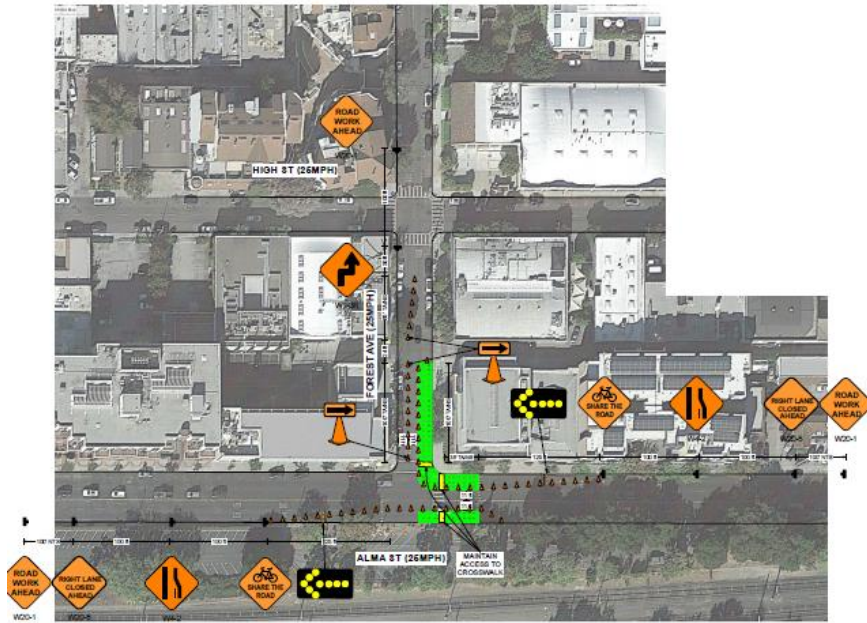
MAIL: 2121 S. El Camino Real, Suite 300
San Mateo, CA 94403

 650.399.9659
 calmod@caltrain.com

Caltrain Electrification Project


ALMA STREET LANE CLOSURE NOTICE | February 2024

LANE CLOSURE MAPS – ALMA STREET NEAR FOREST AVENUE INTERSECTION





FOR MORE INFORMATION

 calmod.org

 Para traducción llama al 1.800.660.4287
如需翻譯,請電 1.800.660.4287
Cần dịch thuật, xin gọi 1.800.660.4287

CONTACT

MAIL: 2121 S. El Camino Real, Suite 300
San Mateo, CA 94403

 650.399.9659
 calmod@caltrain.com

