

# CALTRAIN ELECTRIFICATION



## ALMA STREET LANE CLOSURE NOTICE | March 2024

### UPCOMING ACTIVITIES AND LANE CLOSURES

Continuing during the period of March 4 to March 8, Caltrain will be performing trenching work in Palo Alto that will require partial lane closures of Alma Street near the Forest Avenue intersection to vehicle, bicycle and pedestrian traffic. The temporary lane closures are required due to trenching and construction equipment and crews entering and exiting the Caltrain right-of-way along Alma Street.

**Work will continue March 4 through March 8 between 9 a.m. to 4 p.m. on Monday through Friday.**

Directional signs and cones will direct vehicle traffic from the closed lanes to use open lanes along Alma and Forest during construction. **Only one direction will be closed at a time and access along these streets will be maintained.**

A lane closure map is provided at the end of this notice for vehicle, bicycle and pedestrian traffic.

### CONSTRUCTION ACTIVITIES

During the closure, crews will be trenching along Alma Street for conduit installation. Work will consist of excavation, cutting of asphalt and concrete and excavation restoration. Construction activities require the temporary lane closures to comply with safety regulations.

### PROJECT OVERVIEW

Over the last decade, Caltrain has experienced a substantial increase in ridership and anticipates further increases in ridership demand as the Bay Area's population grows. Caltrain Electrification, scheduled to be operational by 2024, will electrify and upgrade the performance, operating efficiency, capacity, safety, and reliability of Caltrain's commuter rail service.

Caltrain electrification is a key component of the Caltrain Modernization Program and consists of replacing diesel-hauled with an electric train system for services between Fourth and King Street Station in San Francisco and the Tamien Station in San Jose. The project will include the installation of new electrical infrastructure and the purchase of electric trains.

### CONTACT INFORMATION

Caltrain has established a project information line and project e-mail for Caltrain Electrification to record and respond to questions and comments from residents and stakeholders.


The project information line can be reached at **650.399.9659** or toll free at **800.660.4287**.

The project e-mail is [calmod@caltrain.com](mailto:calmod@caltrain.com)

Sign up for weekly construction updates can be found online: [www.caltrain.com/projects/electrification/get-involved](http://www.caltrain.com/projects/electrification/get-involved)



#### FOR MORE INFORMATION

 [calmod.org](http://calmod.org)

 Para traducción llama al 1.800.660.4287  
如需翻譯,請電 1.800.660.4287  
Cần dịch thuật, xin gọi 1.800.660.4287

#### CONTACT

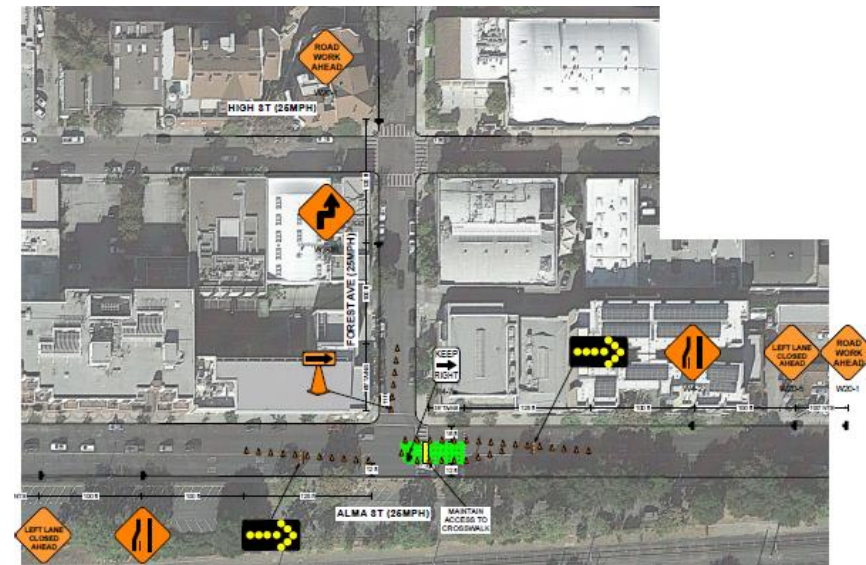
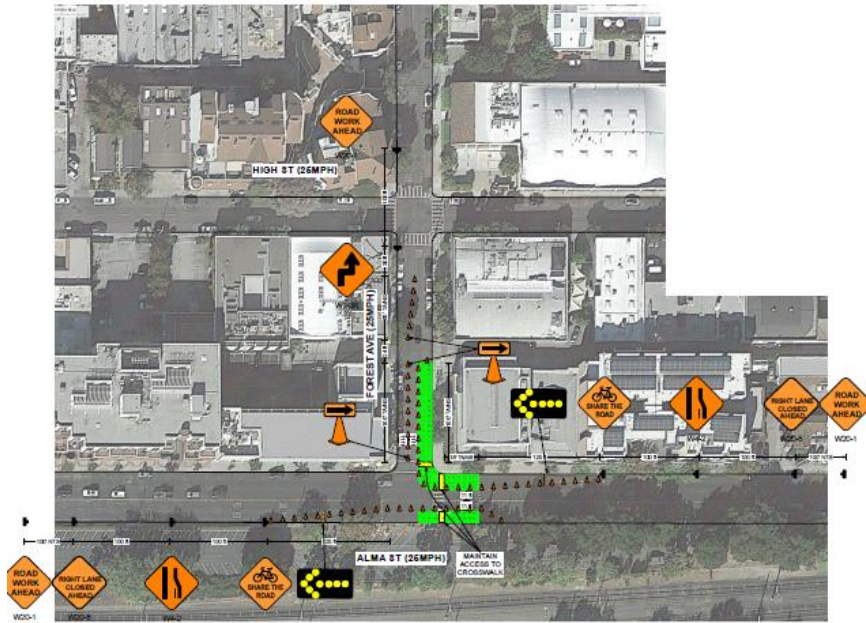
MAIL: 2121 S. El Camino Real, Suite 300  
San Mateo, CA 94403

 650.399.9659  
 [calmod@caltrain.com](mailto:calmod@caltrain.com)

# Caltrain Electrification Project


## ALMA STREET LANE CLOSURE NOTICE | March 2024

### LANE CLOSURE MAP - ALMA STREET AT FOREST AVENUE INTERSECTION





#### FOR MORE INFORMATION

 [calmod.org](http://calmod.org)

 Para traducción llama al 1.800.660.4287  
如需翻譯,請電 1.800.660.4287  
Cần dịch thuật, xin gọi 1.800.660.4287

#### CONTACT

MAIL: 2121 S. El Camino Real, Suite 300  
San Mateo, CA 94403

 650.399.9659  
 [calmod@caltrain.com](mailto:calmod@caltrain.com)

