

Broadway Burlingame Grade Separation Project

City Council Meeting Project Aesthetics

October 3, 2022



Agenda

- Introductions
- Overview Public Outreach
- Preferred Aesthetics
- Questions

Agenda

- **Introductions**
- Overview Public Outreach
- Preferred Aesthetics
- Questions



Introductions

Syed Murtuza

Director of Public Works, Burlingame

Art Morimoto

Assistant Director of Public Works, Burlingame

Andrew Wong

City Project Manager, Burlingame

Alex Acenas

Project Manager, Caltrain

Rob Himes

Project Manager, Mark Thomas



Agenda

- Introductions
- **Overview Public Outreach**
- Preferred Aesthetics
- Questions

Aesthetic Meetings

- City Council Update Meeting (February 7th)
- City Council Subcommittee Meeting (June 15th)
 - City Manager Lisa Goldman
 - Mayor Ricardo Ortiz
 - Councilmember Emily Beach
- Public Meeting Focused on Aesthetics (July 13th)

Outreach Effort

- Mailers
- Notice to project distribution list
- Nextdoor
- City eNews
- Social Media

Representatives

(July 13th Meeting)

Syed Murtuza

Director of Public Works, Burlingame

Art Morimoto

Assistant Director of Public Works, Burlingame

Andrew Wong

City Project Manager, Burlingame

Stephanie Brewer

Management Assistant, Burlingame

Alex Acenas

Project Manager, Caltrain

Navi Dhaliwal

Gov't & Community Affairs Officer, Caltrain

Rob Himes

Project Manager, Mark Thomas

Additional Information

- Websites
 - City of Burlingame
 - www.burlingame.org/broadwaygradeseparation
 - Caltrain
 - www.Caltrain.com/BBGS
- Additional Questions
 - Broadwaygradesep@burlingame.org
 - BBGS@Caltrain.com

Providing Comments

Comment Card / Presentation

www.burlingame.org/broadwaygradeseparation

Comment Deadline

July 20, 2022 at midnight

Opportunities

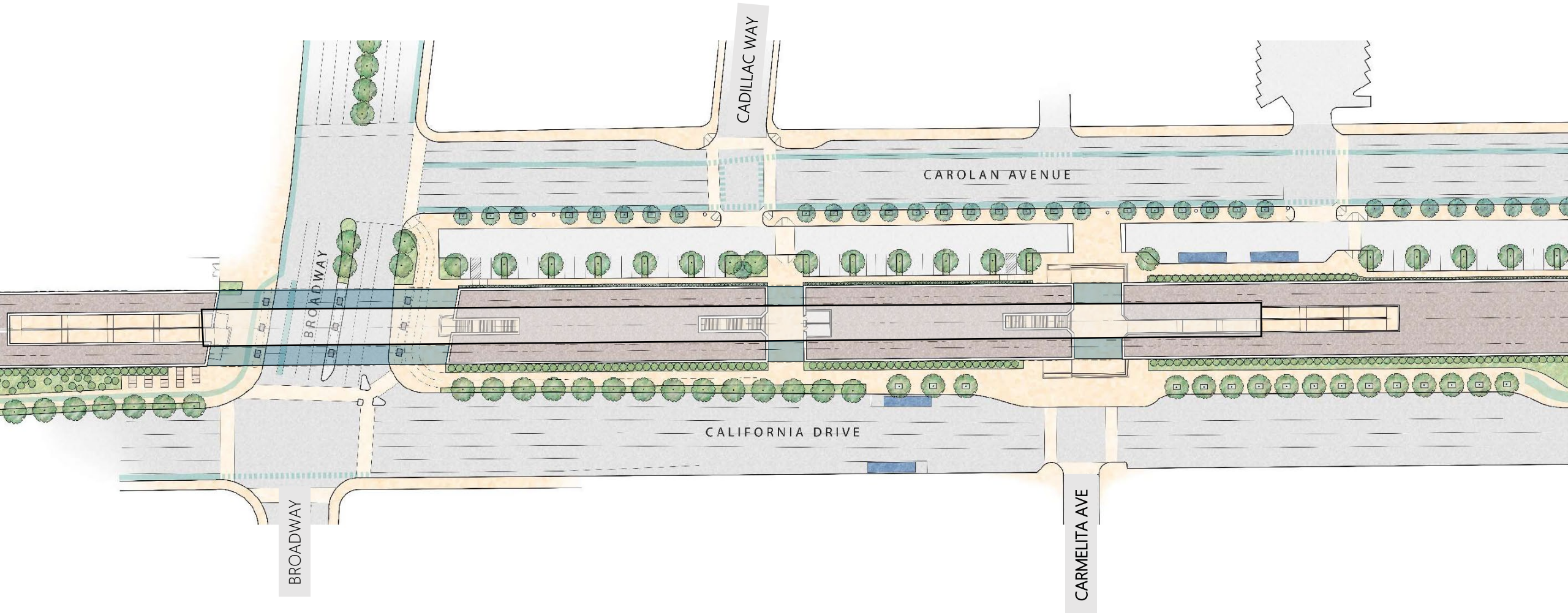
City Council Design Updates

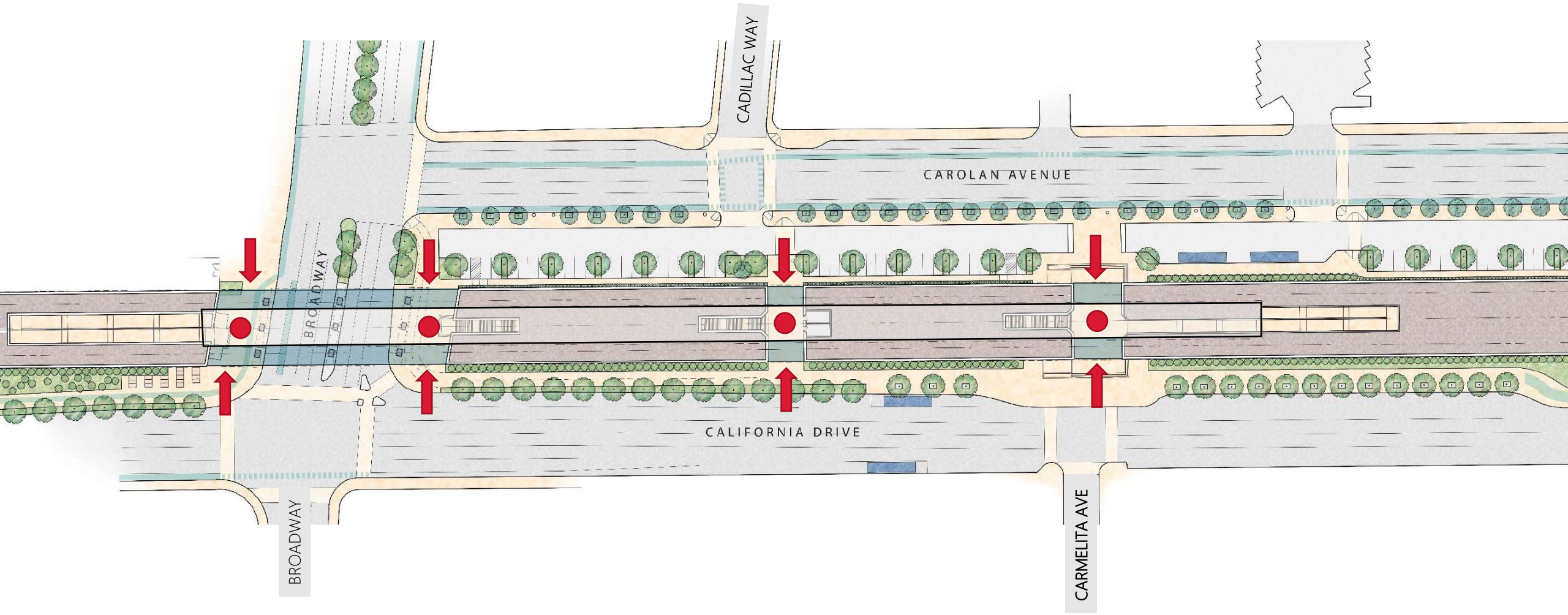
- **Today (October 3rd)**
(Aesthetics)
- **Winter 2022**
(65% Design)
- **Summer 2023**
(95% Design)
- **Spring 2024**
(100% Design)

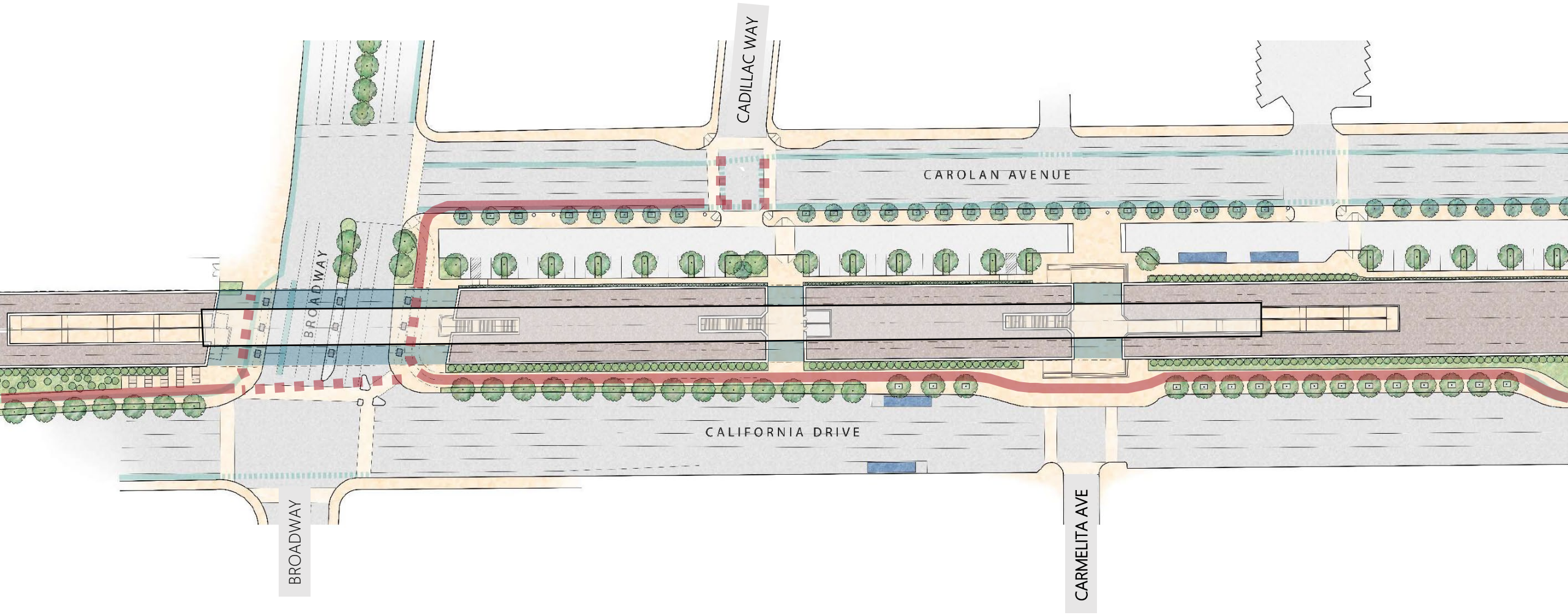
Meeting Attendance

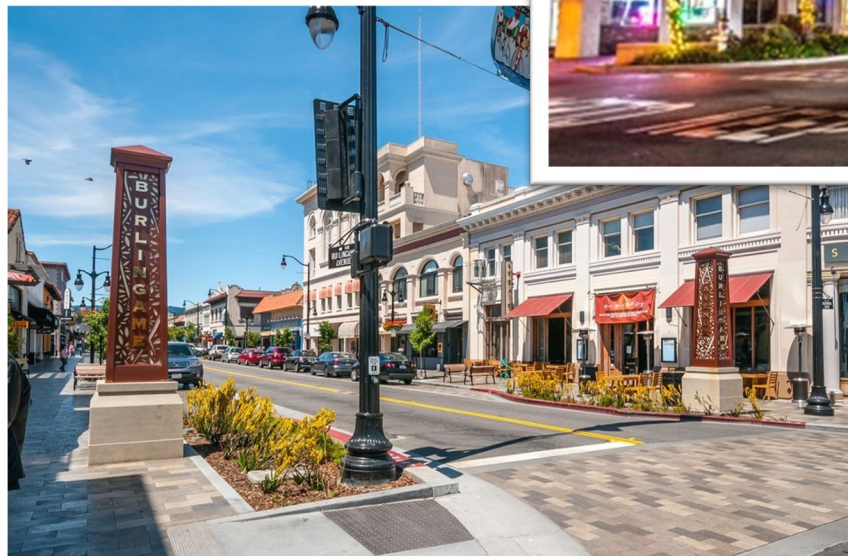
Meeting Attendance

- 26 Attendees
- 243 Votes for Aesthetics
- 89% of the Respondents are Residents of Burlingame
- 116 Written Comments









Agenda

- Introductions
- Overview Public Outreach
- **Preferred Aesthetics**
- Questions

Thin Horizontal



1

Stacked Stone - Rough



3

Stacked Stone - Smooth



2

Thin Horizontal



1

53%

128

Stacked Stone - Rough



3

19%

46

Stacked Stone - Smooth



2

18%

44

No Preference

10%

25

Thin Horizontal



1

53%

128

Stacked Stone - Rough



3

19%

46

Stacked Stone - Smooth



2

18%

44

No Preference

10%

25

Gray



1

Two-Tone Coffee



2

Uniform Coffee



3

Gray



1

Two-Tone Coffee



2

Uniform Coffee



3

Gray



1

37%

89

Two-Tone Coffee



27%

66

2

Uniform Coffee



3

34%

83

No Preference

2%

5

Gray



1

37%

89

Two-Tone Coffee



27%

66

2

Uniform Coffee



3

34%

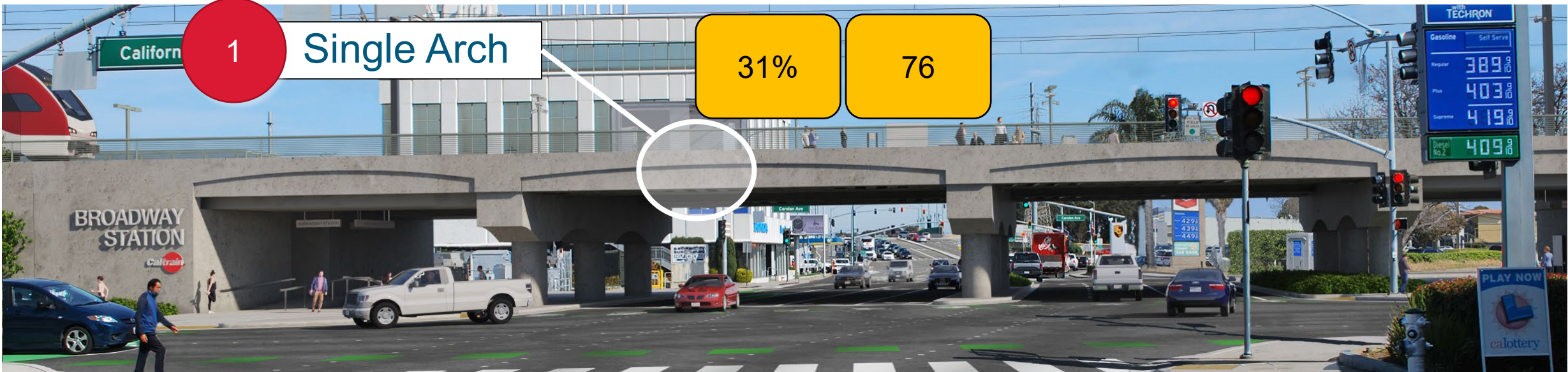
83`

No Preference

2%

5



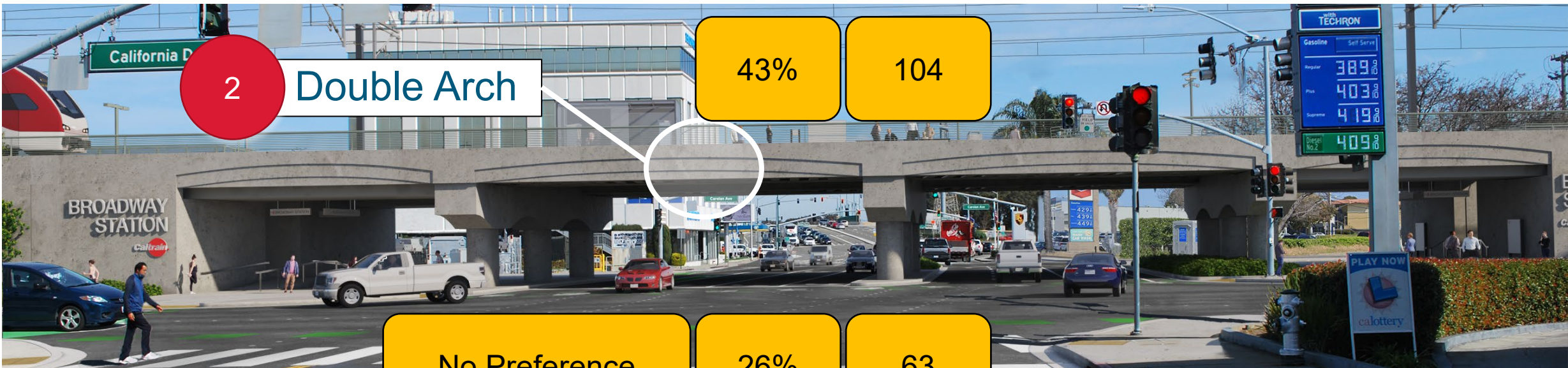


2

Double Arch

43%

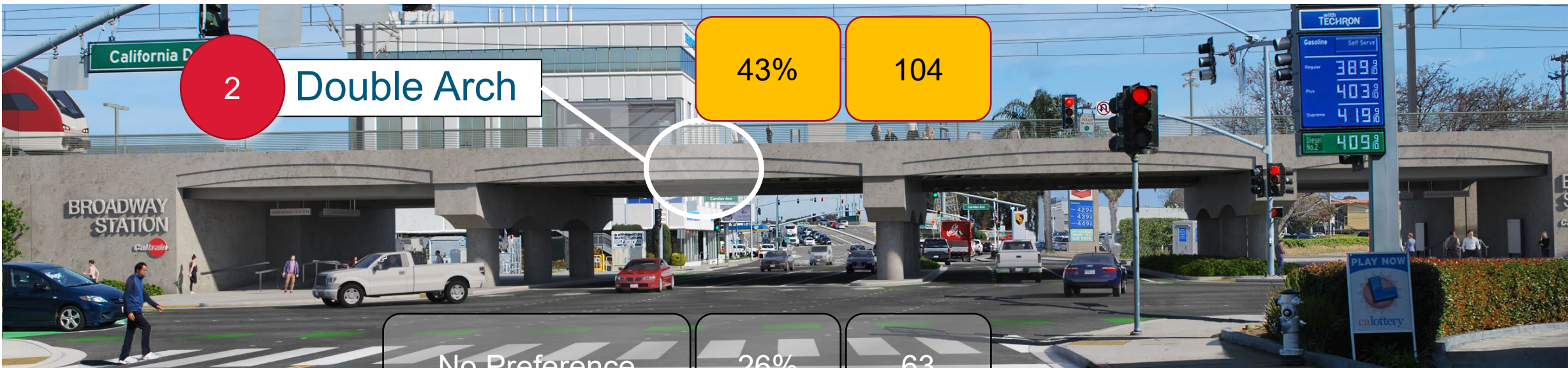
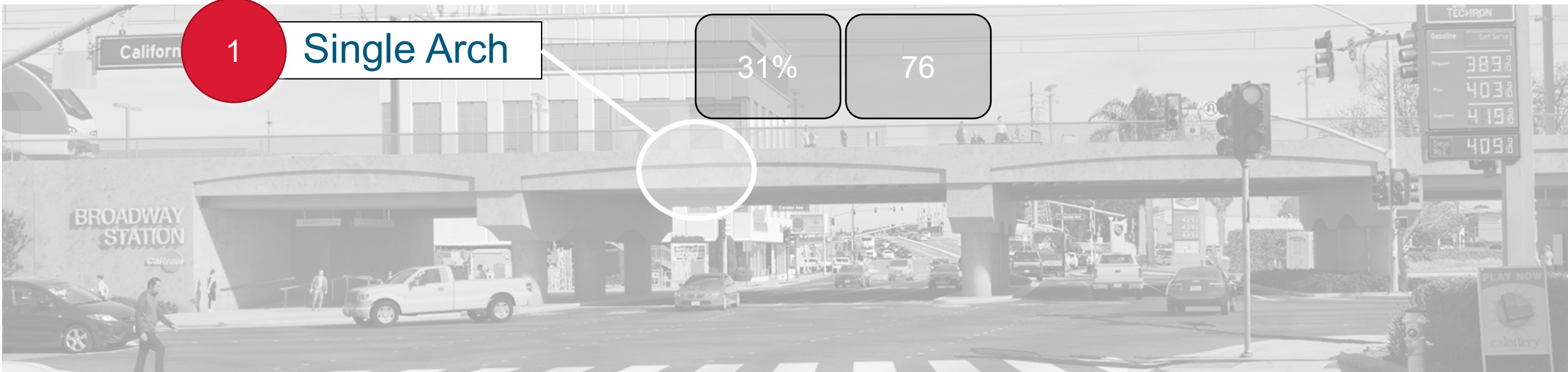
104



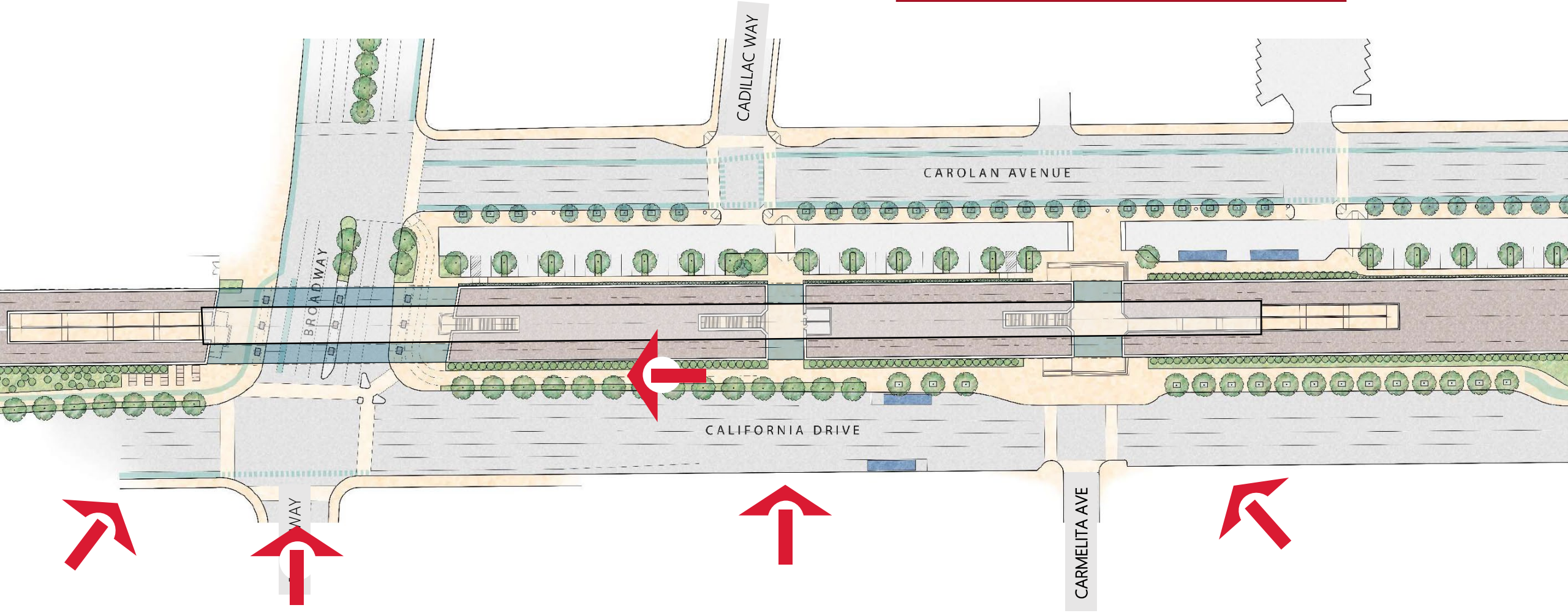
No Preference

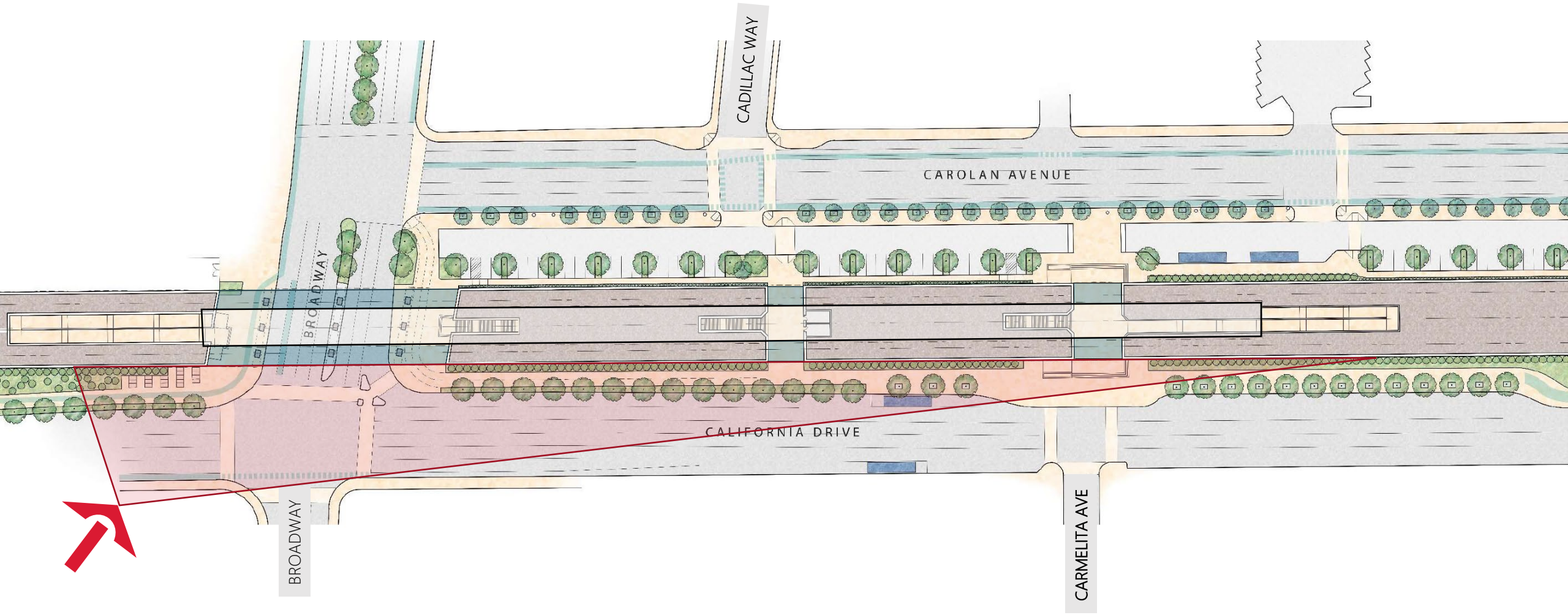
26%

63



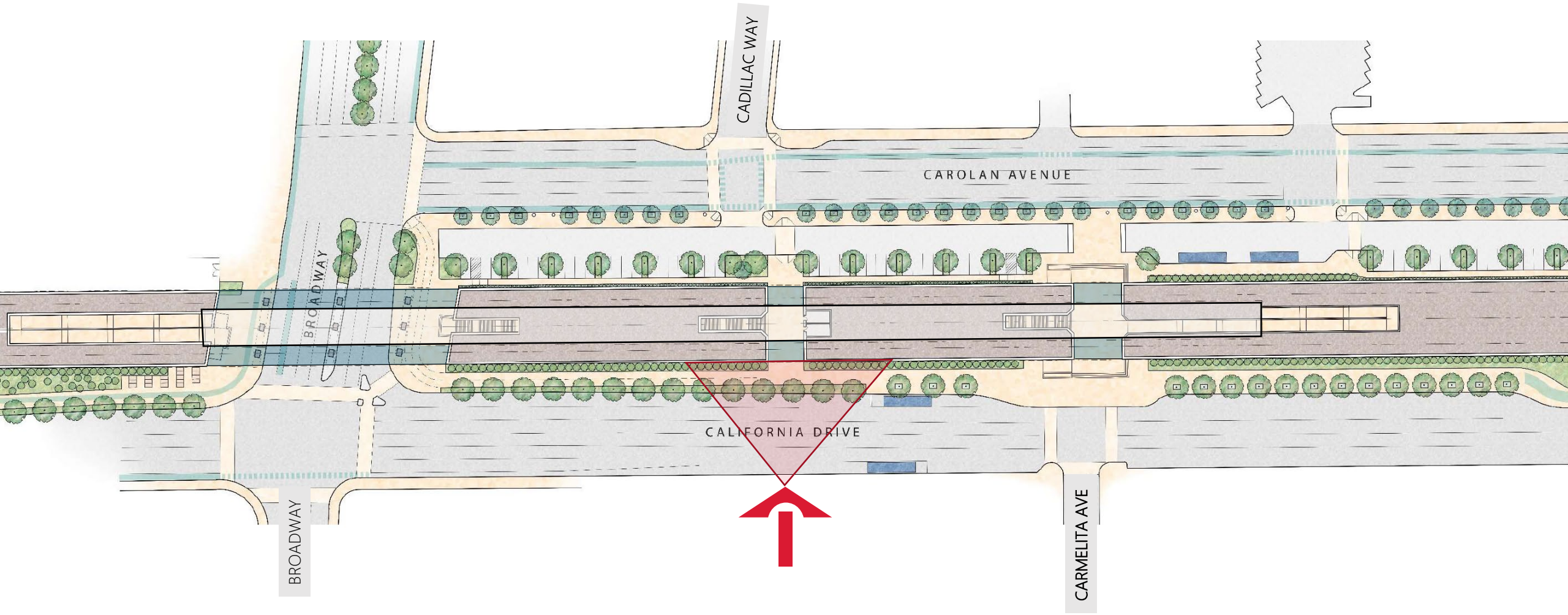
Note:
Renderings and details will
change as design progresses





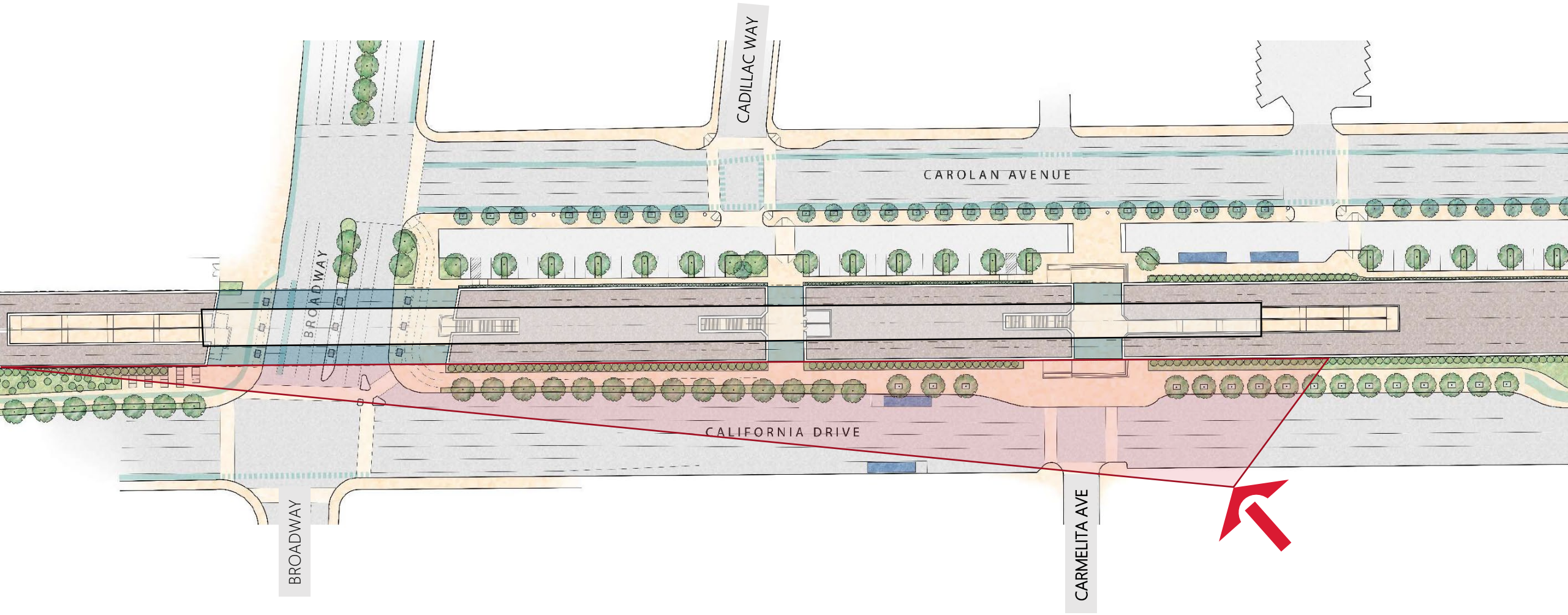






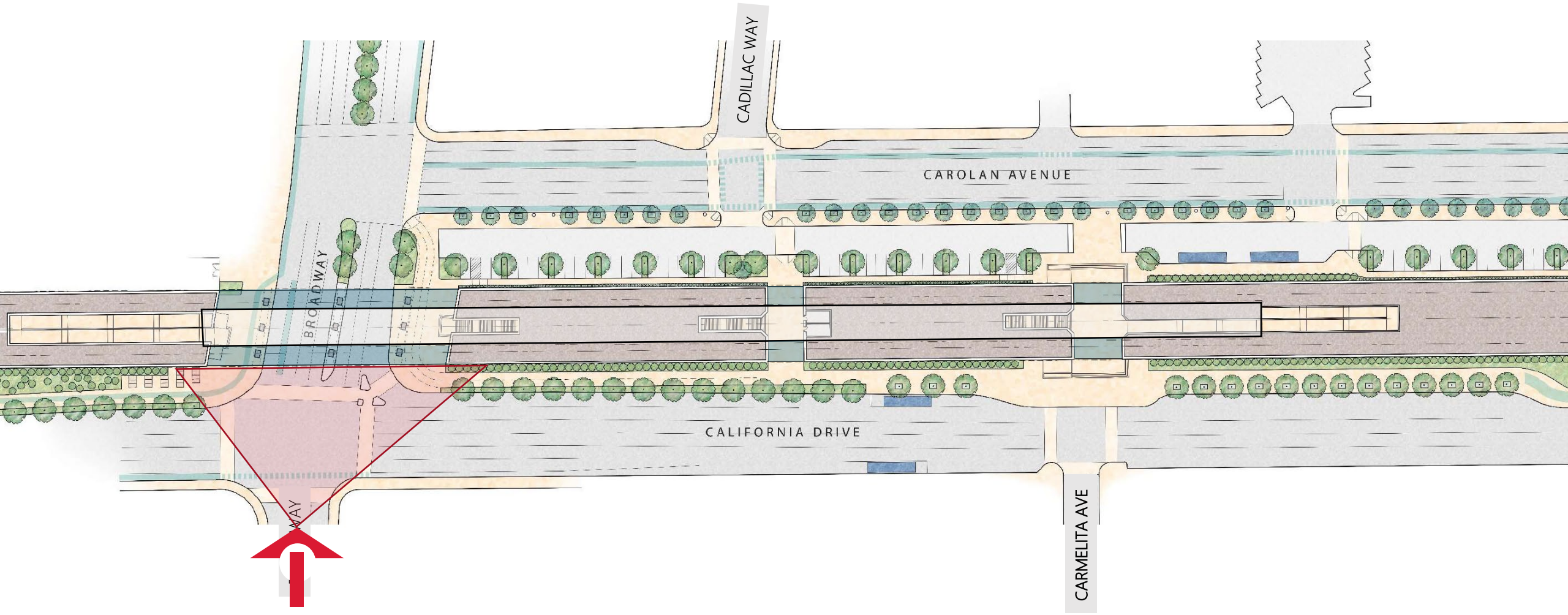






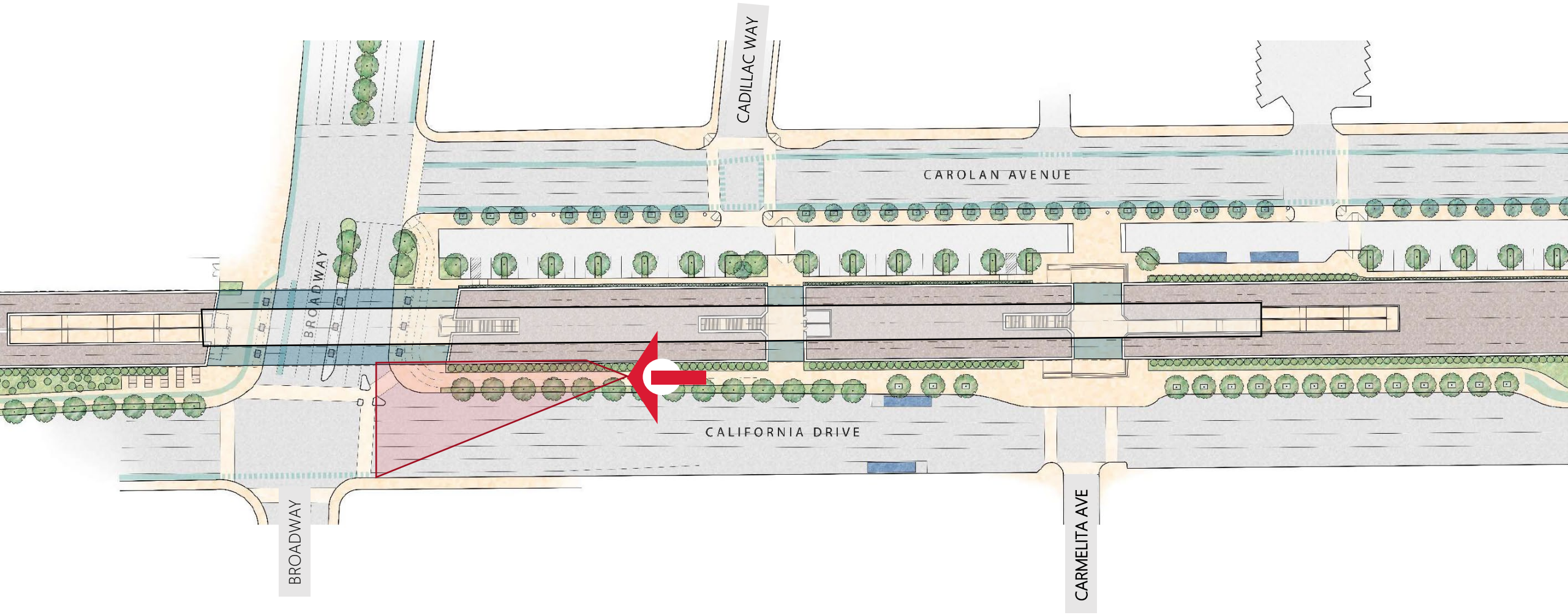














Questions

FOR MORE INFORMATION

WWW.CALTRAIN.COM