

# Broadway Burlingame Grade Separation Project

Burlingame City Council

February 7, 2022

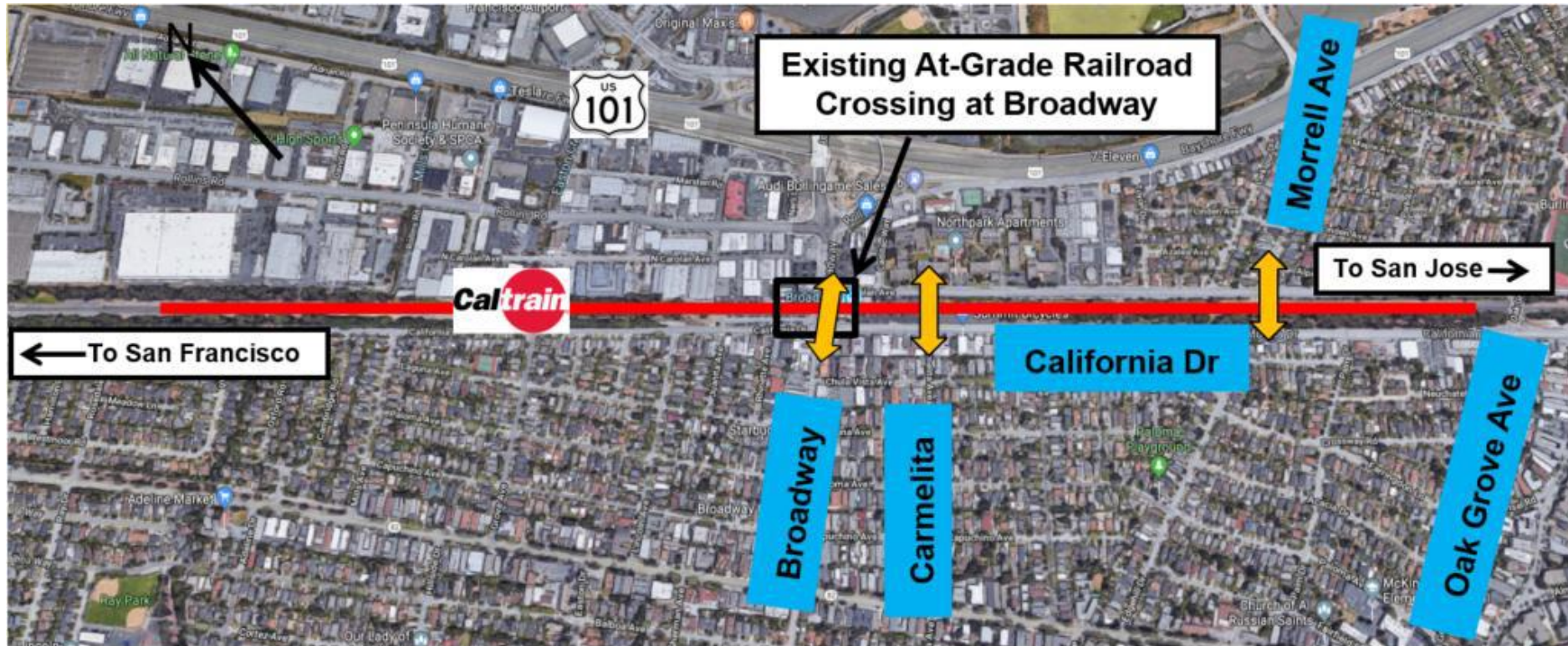


# Agenda

- Project Location / Existing Conditions
- Project Goals / Scope
- Status Update
- Environmental Clearance / Permits
- Project Enhancements
- Project Cost & Schedule Update
- Project Delivery Method
- Grants
- Questions



# Project Location



- Ped / Bike Access
- Broadway & Morrell Ave. to be grade-separated
- New grade separated access at Carmelita Ave.





92 Trains

28K Vehicles

Existing Conditions



# Project Goals

## *Enhance*

- East-west connectivity
- Pedestrian, bicyclist & motorist safety

## *Improve*

- Customer experience with new station
- Efficiency of rail operations

## *Reduce*

- Delays
- Automobile congestion & emissions

# Project Scope

- Grade separate the railroad and Broadway
- Build new station with center boarding platform, ramp & stair access
- Station parking on east side of tracks with access to/from Carolan Ave.
- Two temporary shoofly tracks east of the existing mainline (for train operation during construction phase)
- Ped/Bike crossings at Broadway, Carmelita & Morrell

Phase/Milestone	Completed
Project Study Report	Jan 2017
Prelim. Eng'g/Environ. Clearance	Oct 2020
RFP to complete Final Design	Sep 2020
Contract award to Mark Thomas & Co. for future phases of project	Nov 2020
Final Design phase kick-off <ul style="list-style-type: none"> <li>evaluated value-added modifications (VE Study)</li> <li>base-mapping</li> <li>utility mapping verification</li> <li>geotechnical exploration</li> <li>bus/bike &amp; pedestrian coordination</li> <li>hydraulic modeling</li> </ul>	Jan 2021
VE Options resolved	Jan 2022

# Status Update

- The Project is Moving Forward
- Key Concerns Addressed

# Environmental Clearance

Task	
<b>CEQA Statutorily Exempt</b> (safety project to eliminate at-grade crossing)	Filed Apr 2020
<b>NEPA Clearance</b> (Documented Categorical Exclusion)- Federal Transit Administration	Completed Oct 2020



# Environmental Permits

## To be prepared at 65% Design:

- Section 404 Nationwide Permit #14 (Linear Facilities) - USACOE
- Section 401(c) Water Quality Certification - RWQB
- Streambed Alteration Agreement - CDFW
- Estimated Permitting Phase Duration: Obtain permits 6 months after completion of 65% design

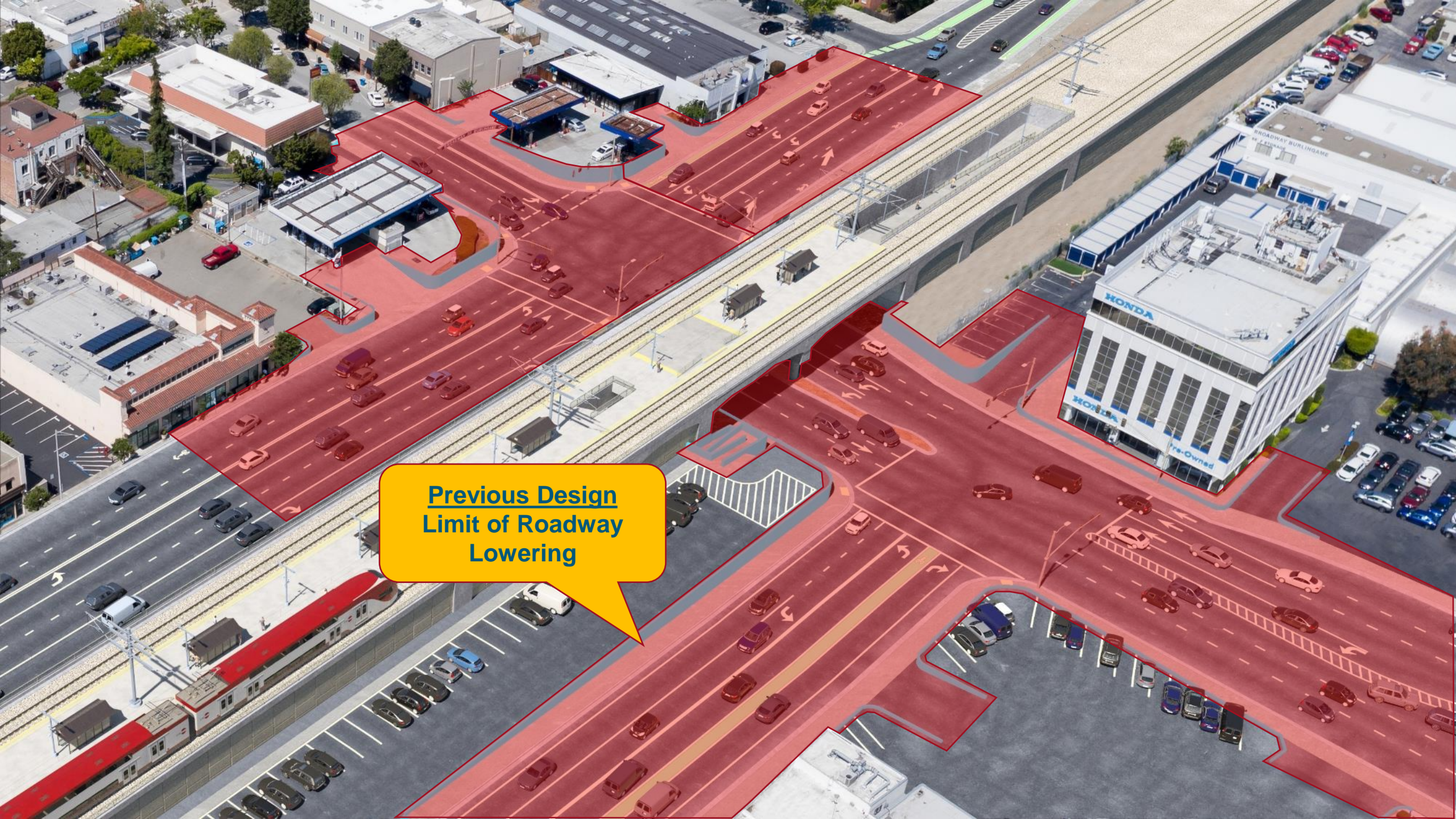
# Project Enhancements

## *Reduce:*

- Traffic Impacts
- Right of Way Acquisition
- Utility Risks
- Construction Duration and Costs

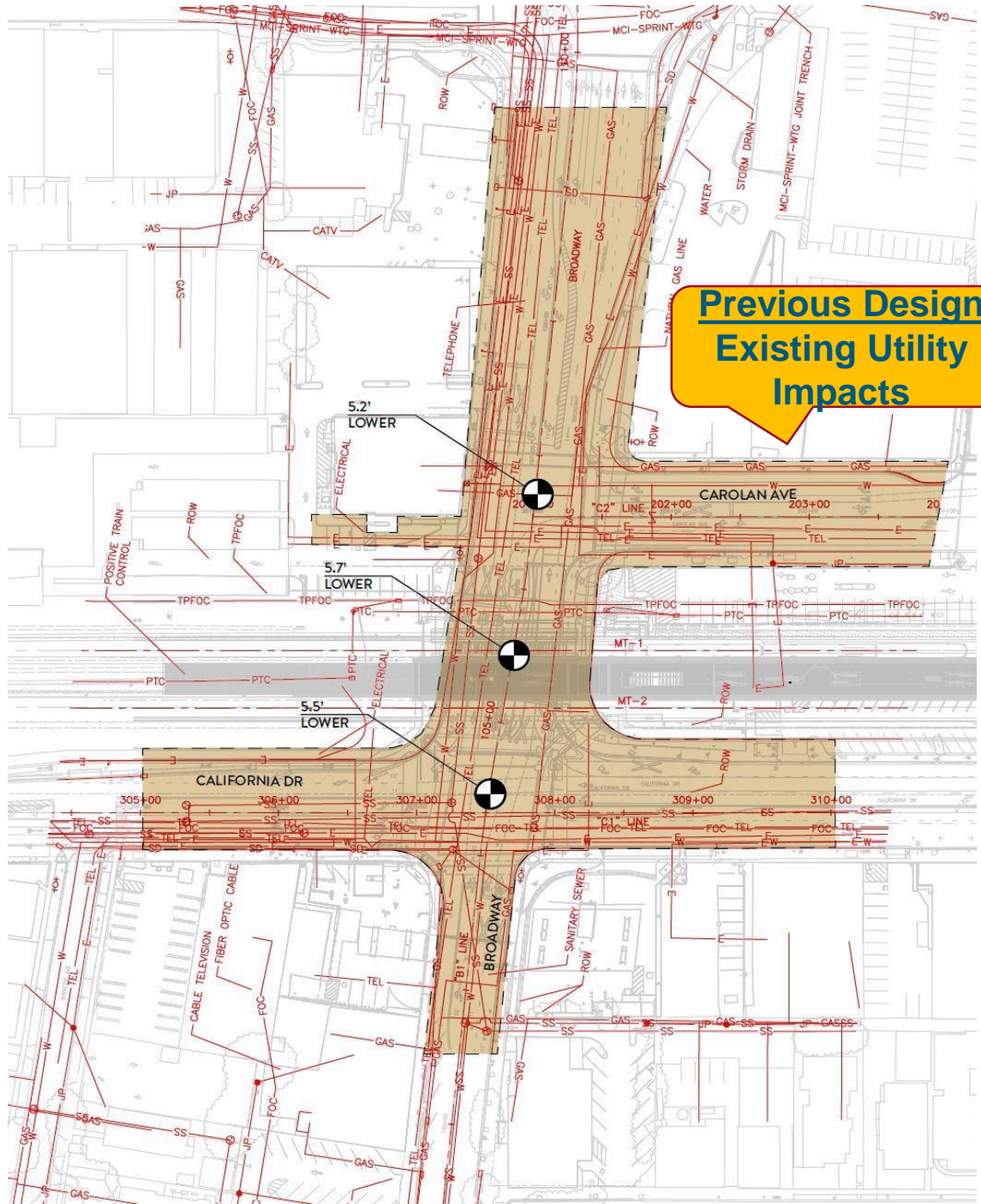
## *Improve* Station Connectivity





**Previous Design**  
**Limit of Roadway**  
**Lowering**



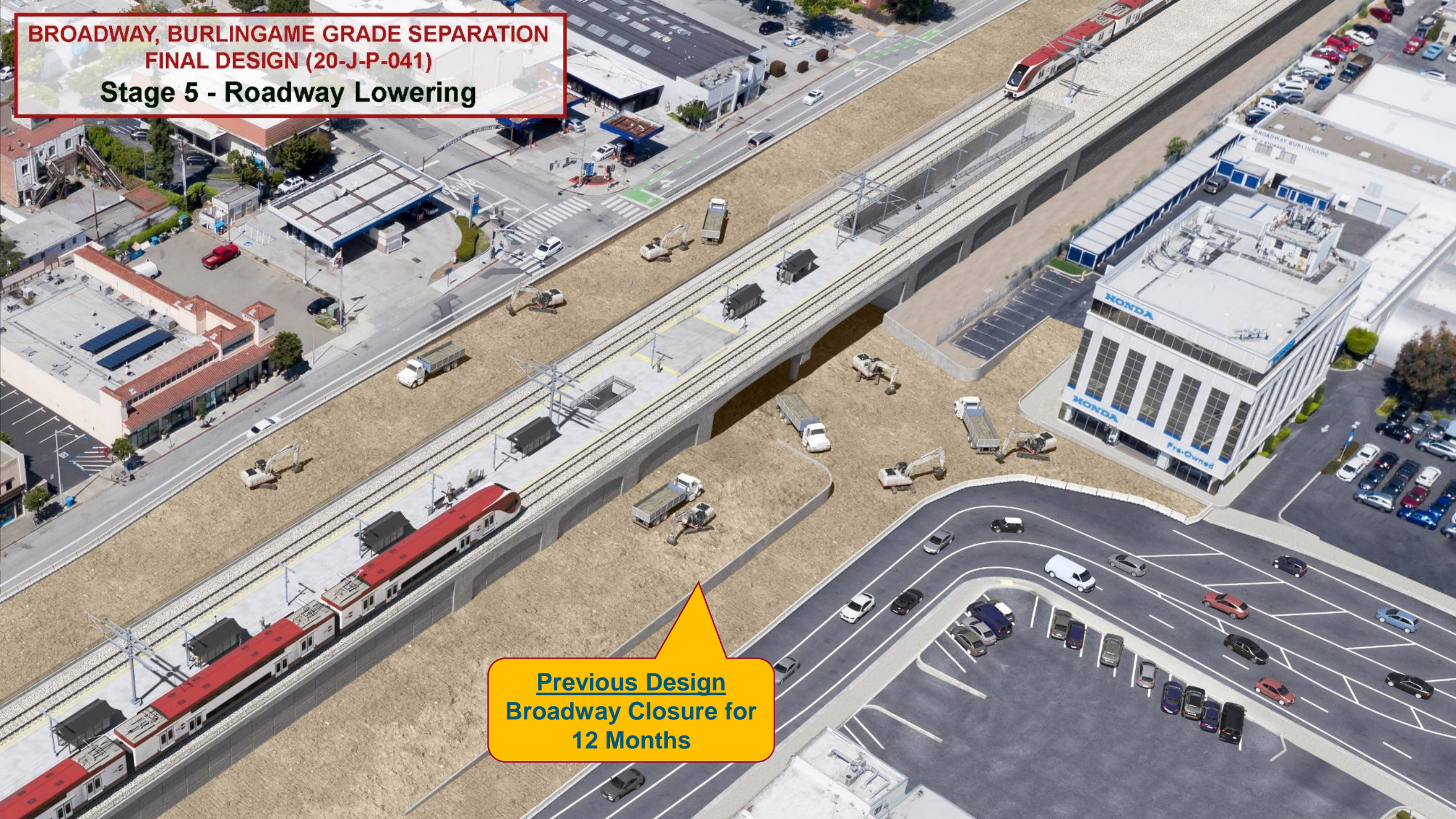


**Previous Design  
Existing Utility  
Impacts**



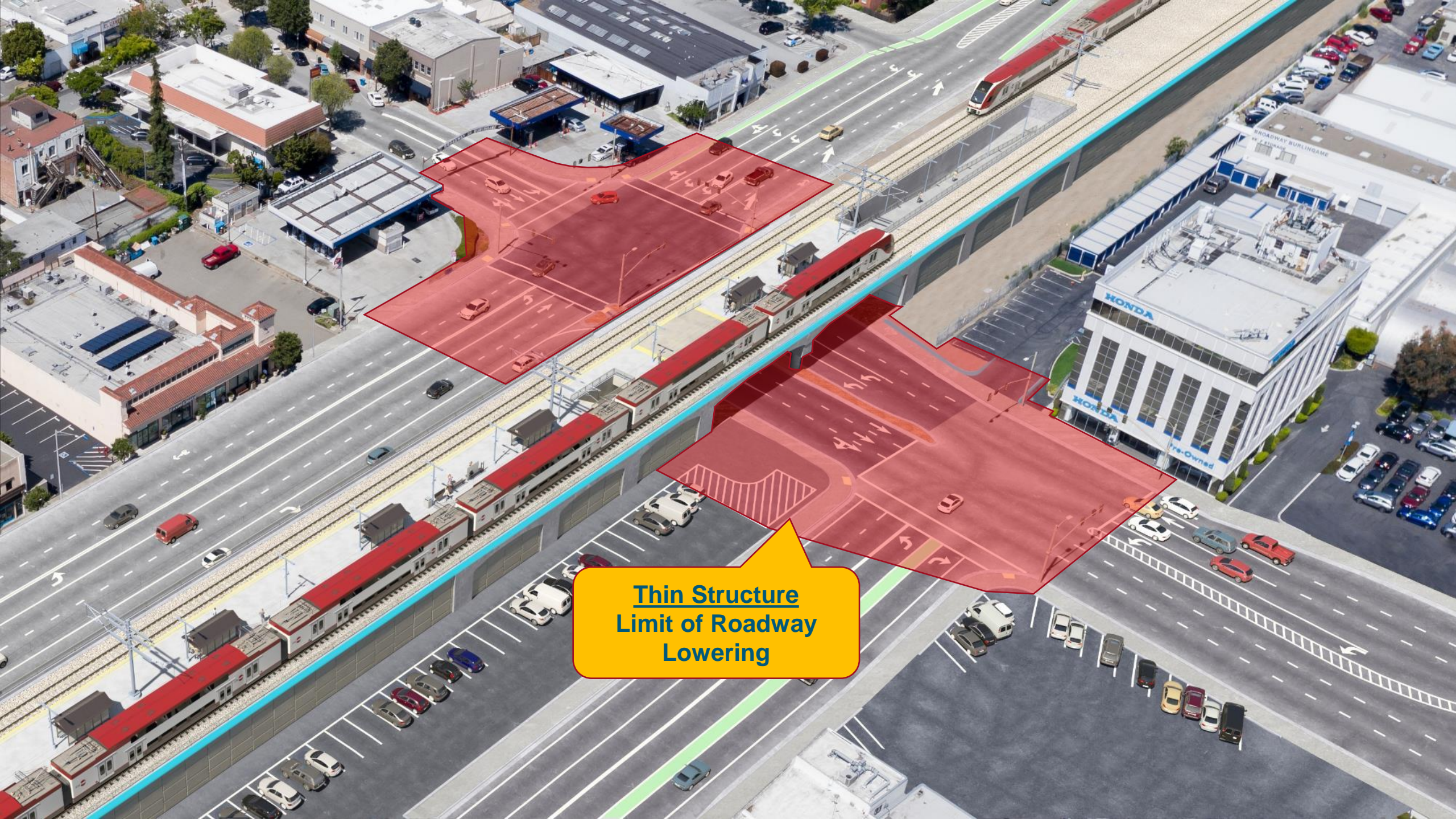
**BROADWAY, BURLINGAME GRADE SEPARATION  
FINAL DESIGN (20-J-P-041)**

**Stage 5 - Roadway Lowering**



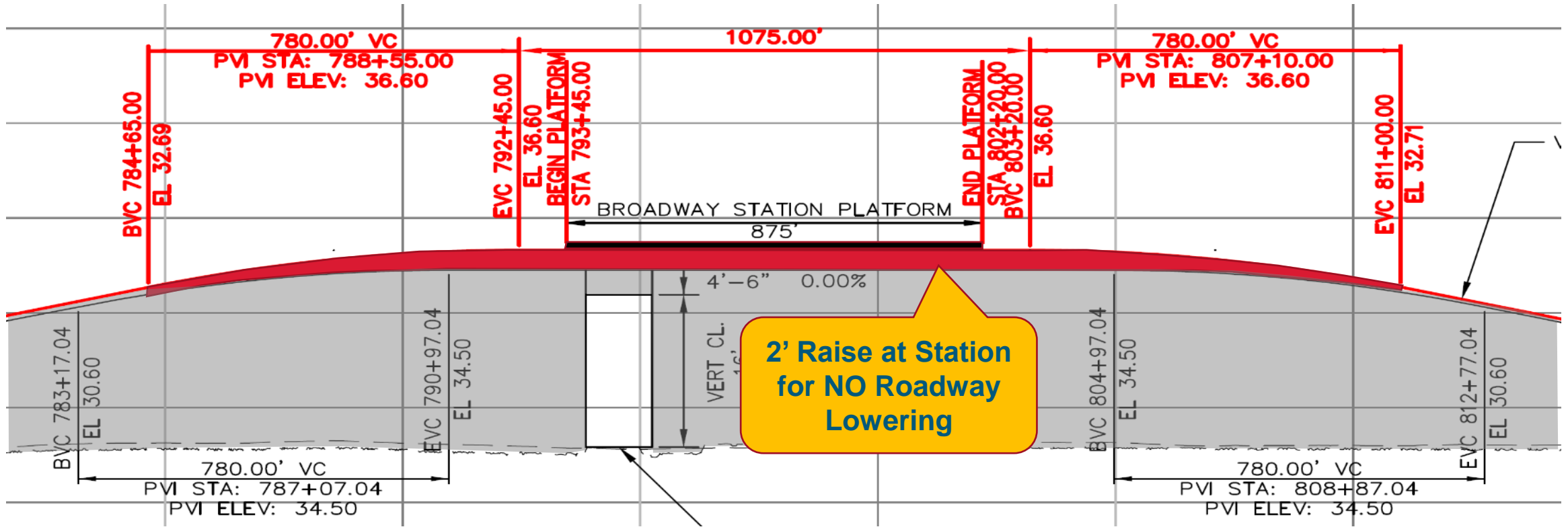
**Previous Design  
Broadway Closure for  
12 Months**



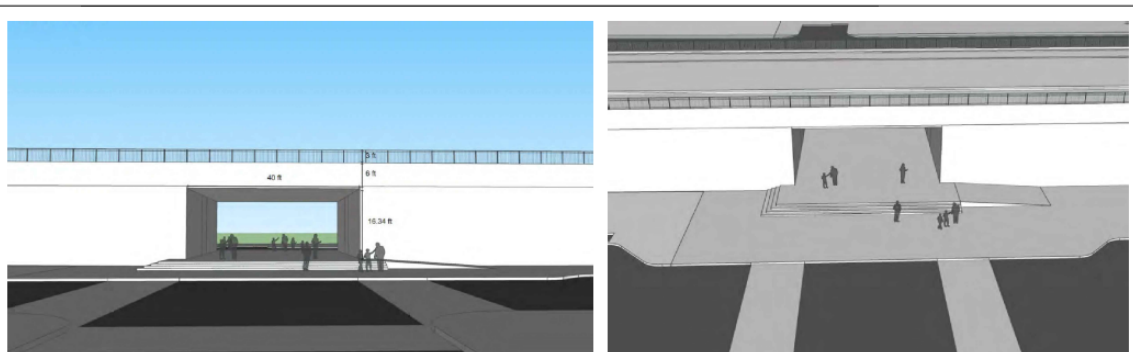


**Thin Structure  
Limit of Roadway  
Lowering**

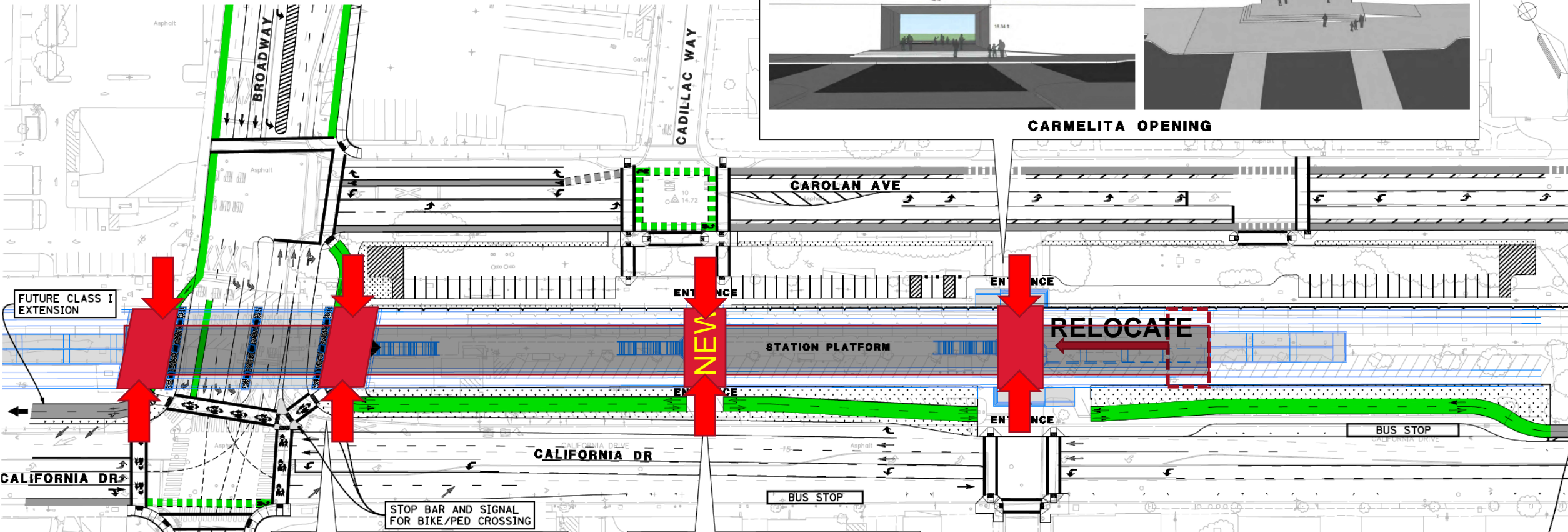




**NOTE:**  
 THE STEPS AT THE CARMELITTA  
 ENTRANCE ARE REQUIRED TO MEET  
 EGRESS TIMES WITH A LEVEL STATION  
 SLOPE, FUTURE STATION RAISE AND 2'  
 TRACK RAISE TO ELIMINATE THE  
 BROADWAY LOWERING.



**CARMELITTA OPENING**



**BROADWAY OPENING**



**CADILLAC OPENING**

CYCLE TRACK TO OAK GROVE AVE  
 AS PART OF THE CALIFORNIA  
 BICYCLE FACILITIES PROJECT.  
 THE CITY TRAFFIC, PARKING &  
 SAFETY COMMITTEE UNANIMOUSLY  
 VOTED FOR THIS CONFIGURATION  
 ALONG CALIFORNIA DRIVE.

**Improved Connectivity**





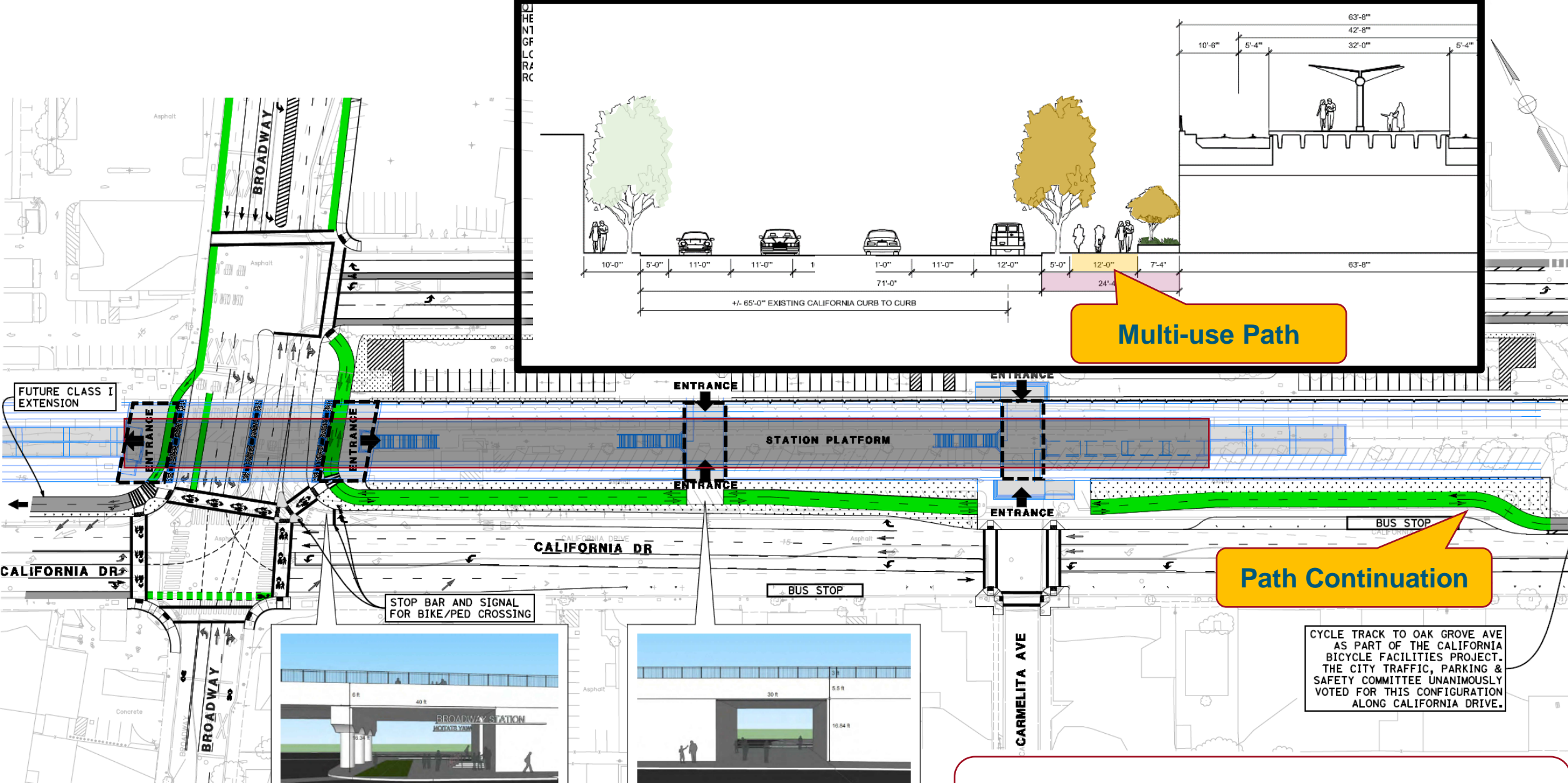
**Additional Spans for  
Bike/Ped Connection**



**Additional Spans for  
Bike/Ped Connection**

**Improved Connectivity**





**Multi-use Path**

**Path Continuation**

CYCLE TRACK TO OAK GROVE AVE AS PART OF THE CALIFORNIA BICYCLE FACILITIES PROJECT. THE CITY TRAFFIC, PARKING & SAFETY COMMITTEE UNANIMOUSLY VOTED FOR THIS CONFIGURATION ALONG CALIFORNIA DRIVE.



**BROADWAY OPENING**



**CADILLAC OPENING**

**Improved Connectivity**





**Improved Connectivity**



# Project Cost Update (1000's)

Phase	TA Funds \$	Local Match \$	Estimate \$
Project Study & Preliminary Engineering	5,050	500	5,550
Final Design / Environmental Permits	17,805	1,500	19,305
Right of Way / Utilities *	-	-	23,522
Construction *	-	-	230,427
VE 1: Shallower bridge structure	-	-	(23,267)
VE 2: Raise rail profile 2 feet	-	-	(3,324)
VE 4: Carmelita Ave. entrance	-	-	0
VE 5: Morrell undercrossing	-	-	0
<b>Subtotal</b>			<b>252,213</b>
YOE Mid Construction 2026			64,189
<b>TOTAL</b>			<b>316,402</b>

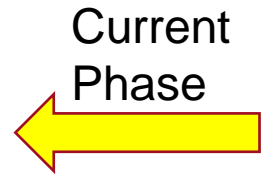
\* Future Allocations





# Project Schedule Update

Phase	Start	Finish
Project Study Report	Jan 2014	Jan 2017
Preliminary Engineering / Environmental Clearance	Mar 2017	Oct 2020
Final Design / Environmental Permits	Jan 2021	Jul 2024
Right of Way / Utilities	Jul 2023	Sep 2024
Construction	Jan 2025	May 2028



# Project Delivery Method

Exploring  
***Construction Manager / General Contractor (CM/GC)***

## Legal Framework

- **Allowed** pursuant to California Public Contract Code **103394** et seq.
- Used by Caltrans and others in California

## Goals

- Safely deliver high quality infrastructure
- Effective scope, schedule, budget Management
  - Early Contractor involvement & Early works – utility relocations
  - Constructability reviews and incorporation of lessons learned
  - Improved cost and schedule certainty
- Minimize impacts to community and Caltrain Operations
- Provide meaningful opportunity for diversity contracting



# Grants

- City-led effort
- Caltrain can provide support
- Upcoming Opportunities:
  - Rebuilding American Infrastructure with Sustainability and Equity (RAISE) – Notice of Funding Opportunity (NOFO) coming soon
  - INFRA/Mega Projects/Rural Roads – USDOT to issue NOFO in February 2022

# Questions



FOR MORE INFORMATION

[WWW.CALTRAIN.COM](http://WWW.CALTRAIN.COM)

