

Update on the Guadalupe River Bridge Replacement Project



October 30, 2024



Agenda

1. Project Overview
2. Challenges
3. Path Forward
4. Next Steps
5. Questions

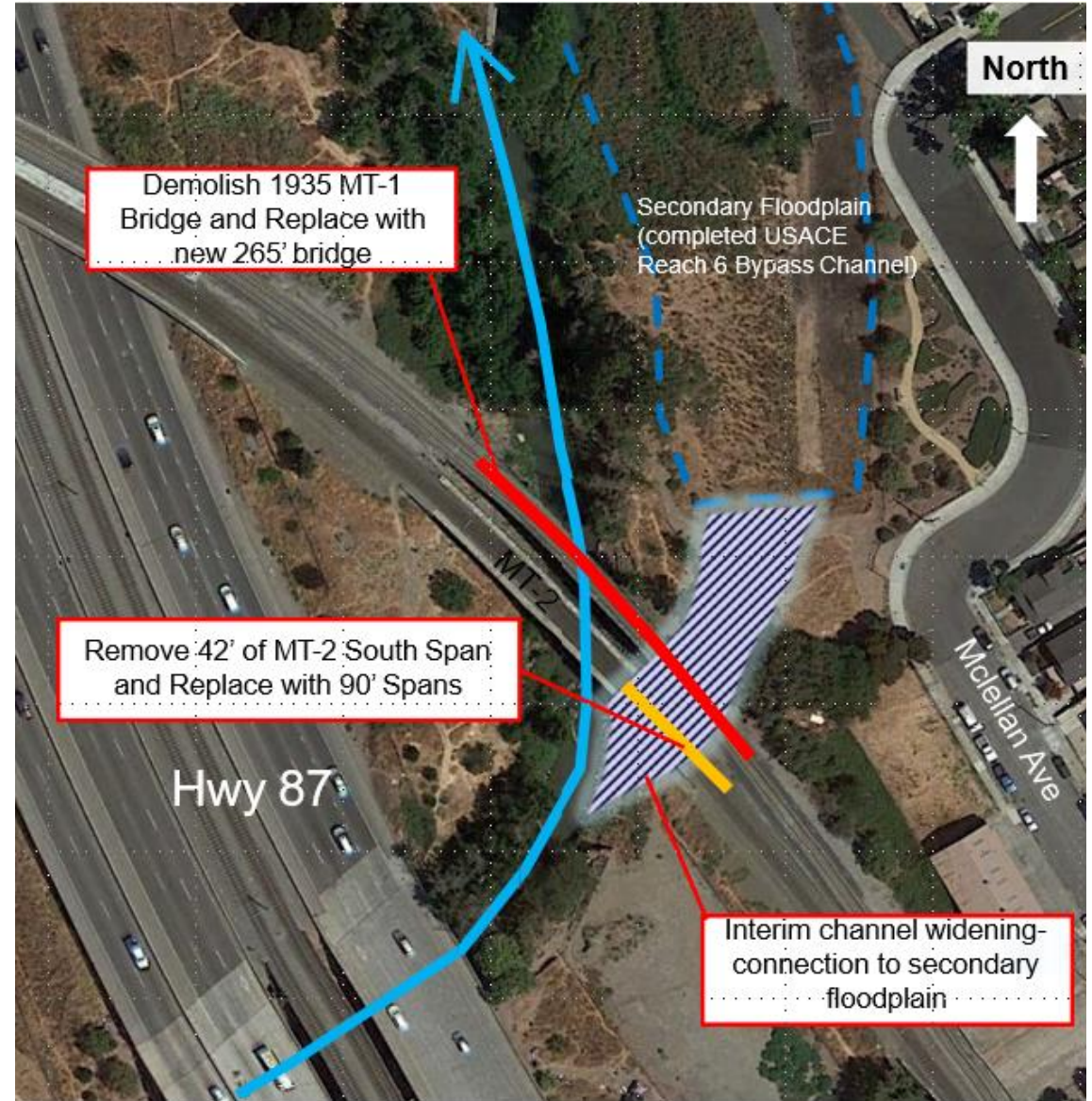
Guadalupe River Bridge Project Overview



- The Guadalupe Bridge serves as a **gateway** to communities in our southern most service area including:
 - Tamien, Capitol, Blossom Hill, Morgan Hill, San Martin and Gilroy
 - In September alone, about **11,500** Caltrain riders used one of these stations to get to work, school, and other activities.
 - When both tracks were in operation- roughly **16,200** trains traveled across the bridges yearly

Bridge Project Scope

- **Replace MT-1 (Northbound)** with new longer bridge (265 ft). Bridge is wood trestle built in 1930s
- **Extend the existing MT-2 (Southbound)** span and south abutment and improve seismic resiliency
- Interim **channel widening** to reduce erosion and risk to bridge structures, passenger, and freight rail services
- Shared corridor with Freight Rail. Currently **single** track



MT-2 electrified with 25Kv Overhead Contact System
MT-1 to remain non-electrified



Caltrain River Bridge Replacement and Extension



Northbound MT-1 (1935)



Northbound MT-1 (1935); Southbound MT-2 (1990)

Urgency of Northbound Bridge (MT-1) Replacement for Structural Condition



- **Deteriorating** structural condition of 1935 trestle
- Concerns for bridge scour and **bank failures**
- Previous challenges with **structure fire** - requires constant attention
- **Seismic upgrades required**
- **High flow velocity** and associated bank failures during storm events **threaten the integrity of the bridges**
- **Multiple emergency repair/stabilization** projects since 2008 to address bank erosion threatening to undermine abutments at Northbound (MT-1) and Southbound (MT-2)
- February 2021, as part of the Mitigated Negative Declaration, the Board found that in light of **the public safety imperative** that this project should proceed at the **earliest possible date**

Project Challenges

- Environmental Compliance and Oversight
 - Changes to Plans and Communication Gaps
 - Construction Practices and Permitting Issues
- Program Management, Processes, and Procedures
- Remaining project works (permit amendments, budget, schedule)

Path Forward

Maintain High Standard of Excellence

Internal (Executive Committee Oversight)

- Goal: continue to improve overall process, accountability and delivery execution
 - Detailed project review underway (including schedule, risk, budget)
 - Organization review underway
- Based on initial reviews:
 - Replaced contractor personnel and on-call construction management personnel
 - Added experienced staff to the construction and environmental teams
 - Implementing process changes
 - More recommendations coming

Path Forward Continued

Maintain High Standard of Excellence

External Efforts (Executive Committee Oversight)

- Focus on winterization: Completed Oct. 20, 2024
- Update environmental permits
- Strengthen collaboration at all levels from ED to project team with permitting agencies to ensure smooth execution
- Continue developing plans for dry season construction work, target restart of construction 2025 (depends on resource agency approvals)



Next Steps

- Ongoing updates to JPB TOPS Committee
 - Regular updates on progress with permitting agencies
 - Regular project status updates
 - Regular updates on organizational and process improvements
- Continued commitment to safety of public, staff and contractors; steward of the environment

Questions

